



ECC-84-284-BID-05-A

BACKGROUND INFORMATION DOCUMENT

PREPARED FOR

AFRITIN MINING NAMIBIA (PTY) LTD



AUGUST 2021

BACKGROUND INFORMATION DOCUMENT

PROPOSED STAGE 2 EXPANSION OF THE PILOT TIN PROCESSING PLANT ON ML 134, ERONGO REGION, NAMIBIA.

1 PURPOSE OF THIS DOCUMENT

The purpose of this Background Information Document (BID) is to provide Interested and Affected Parties (I&APs) background to the proposed project and to invite I&APs to register as part of the Environmental and Social Impact Assessment (ESIA) process.

The proposed project involves the stage 2 expansion of the pilot tin processing plant on Mining Licence (ML) 134, held by Afristin Mining Namibia (Pty) Ltd, hereafter referred to as “the proponent or Afristin Mining”.

Through registering for the project, all I&APs will be kept informed throughout the ESIA process, and a platform for participation will be provided to submit comments/recommendations pertaining to the project.

This BID includes the following information:

- The proposed expansion of the pilot plant and increased production activities and location;
- The necessity of the project, potential benefits or adverse impacts anticipated;
- The alternatives to the project that will be considered and assessed;
- How the ESIA process works;
- The public participation process and how to become involved; and
- Next steps and the way forward.

2 DESCRIPTION OF PROPOSED PROJECT

2.1 BRIEF INTRODUCTION

Environmental Compliance Consultancy (ECC) has been engaged by the proponent to

undertake an ESIA and an Environmental Management Plan (EMP) in terms of the Environmental Management Act, 2007 and its regulations. An environmental clearance application will be submitted to the relevant competent authorities, the Ministry of Mines and Energy (MME) and the Ministry of Environment, Forestry and Tourism (MEFT). The ESIA will also be conducted following the IFC standards.

2.2 LOCATION

The proponent proposes the increase of production activities in stage 2 by expanding the pilot tin processing plant on ML 134 located near Uis in the Erongo Region, Namibia. Uis can be accessed by the C36 road from Omaruru, the C35 from Hentiesbaai or the C35 from Khorixas. The location of ML 134 (where the expansion is proposed) can be seen in Figure 1.

2.3 WHAT IS PROPOSED

The proponent is a mining company with a portfolio of tin assets in Namibia and South Africa. The Namibian registered company proposes several mechanical and process flow upgrades to components of the current pilot plant’s processing and supporting infrastructure (i.e., upgrades to the Dense Medium Separation (DMS) 1 cyclone feed, inlet pressure system rates and constant moisture control within feed material, etc.) and therefore, an expected increase in the production rate from the current 80 Tons Per Hour (TPH) in stage 1 to 120 TPH in stage 2.

To implement the proposed upgrades, various other supporting infrastructure on-site require an upgrade to be able to sustain and support the planned expansion project. The additional changes and upgrades include the following:

- Upgrading the existing rudimentary sewerage effluent water collection and treatment system;
- The need for a new Clean Water Channel (CWC) (stormwater channel) and berm around the pilot plant;
- An upgrade of the existing settling and evaporation ponds; and
- A need for an increased supply of water (water demand of 150 000 cubic meters per year).

These upgrades equate to a life of operations of 20 years and will transform the pilot plant into an ore processing plant with a targeted tin recovery of 64% during operations.

2.4 WHY IS THE PROJECT NEEDED

Namibia is rich in natural resources and the minerals sector is a key contributor to the nations Gross Domestic Product in Namibia. The proposed expansion will create additional job opportunities and economic benefits. There are various important uses for tin, some of which include various uses within the food packaging, automotive, medical, electronics, and textiles industries.

2.5 OPERATION PHASE

The proponent will have a water demand of 150 cubic litres per year for the proposed expansion and production rate increase on ML 134. This is required to operate stage 2 and covers a production output of 120 Tons Per Hour (TPH), which is predicted to be achieved through this stage. Water will be

obtained from underground sources and an existing surface water body that was artificially created from historical mining. This water body is called the northern pit.

A rudimentary (Clarus Fusion Waste Water Treatment Plant (WWTP)) sewerage effluent water collection and treatment system exists on-site and there is the need to upgrade this system to operate comfortably with an enlarged capacity of personnel on-site. The system is maintained by an external service provider and must be upgraded as part of the expansion scope to accommodate additional volumes. Sewage waste is collected monthly by a local contractor and disposed of at the local sewage plant.

The expansion will also entail the installation of a new CWC stormwater channel and berm around the pilot plant as well as an upgrade of the existing settling and evaporation ponds.

Ore (cassiterite) will continue to be extracted from the open pit areas, which will supply the proposed stage 2 expansion within the ML 134 area with adequate volumes of ore. Open-pit 1 will continue to be mined and opened in a southerly direction and will eventually flow into pit 2.

All plant discard streams are dewatered before disposal, maximising water conservation and negating the need for tailings storage facilities. Coarse and fine tailings are dewatered on vibrating screens, while slimes are dewatered through thickener and filter press combination. The recovered water is ponded and reused in the process. Dewatered tailings are co-disposed with mining waste rock.

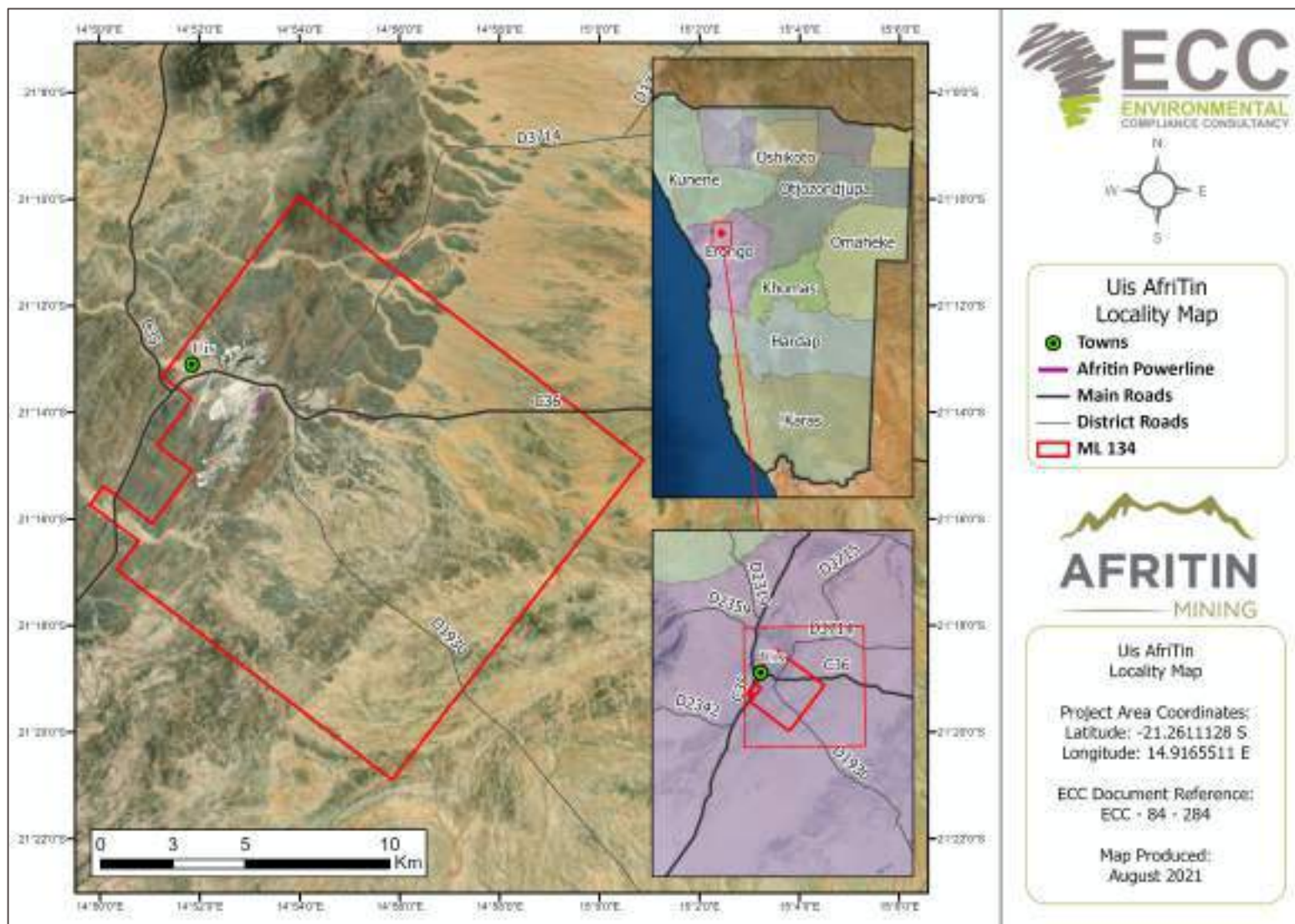


FIGURE 1 – LOCALITY MAP OF THE PROPOSED PROJECT

2.6 POTENTIAL IMPACTS OF THE PROJECT

2.6.1 SOCIO-ECONOMIC

The potential social impacts are anticipated to be of minor significance, these potential impacts may include the following:

- Potential to unearth, damage or destroy undiscovered heritage remains;
- Some jobs will be created as a result of the expansion project;
- Potential traffic issues during the construction and operational phases;
- There will be economic benefits due to increased investment and investor confidence in the Namibian minerals sector;
- Minor disruption to the neighbouring residents and sensitive receptors, including some potential increase in noise and dust levels especially during the construction, blasting and decommissioning phases of the project; and
- Potential poaching/ livestock theft impacts due to the increased movement of people in the area.

2.6.2 ENVIRONMENTAL

Some of the potential environmental impacts are anticipated to be of minor significance, and those that may occur shall be contained within the ML site, these potential impacts may include the following:

- Clearing of vegetation during the expansion of the pilot plant;
- Potential Impacts on biodiversity and migratory patterns of fauna;
- Use of resources, including groundwater;
- Potential ground and surface water pollution; and
- Risk of spillage of hydrocarbons, chemicals or other dangerous goods/materials.

There may also be impacts of a more significant nature that will require further

investigation during the ESIA process. The impacts proposed at this stage include, but are not limited to:

- Potential mine drainage and contaminant leaching: Potential changes to groundwater and surface water quality as a result of mine drainage, chemical spillages and contamination;
- Potential groundwater drawdown both locally and over a wider area due to pit dewatering, and groundwater abstraction for water supply;
- Erosion of soils and mine wastes into surface water streams or sediment-laden surface run-off that collects in natural channels;
- Potential impacts on air quality, key indicator sources include mobile, stationary and fugitive sources within mine and processing operations;
- Noise and vibration impacts; and
- Project potential impact towards climate change due to the contribution of carbon emissions.

3 CONSIDERATION OF ALTERNATIVES

Best practice environmental assessment methodology calls for consideration and assessment of alternatives to a proposed project.

No alternative site has been considered due to this being an existing mine: however, by using process innovation and available new technologies, the proponent aims to turn a mine that was once deemed non-feasible into a feasible state with a larger production output. Mechanical and processing upgrades to existing infrastructure shall form the core of the expansion process.

4 THE ENVIRONMENTAL ASSESSMENT PROCESS

This ESIA, conducted by ECC, is undertaken in terms of the Environmental Management Act, 2007 and its regulations. The process followed in this ESIA is set out in the flowchart in Figure 2.

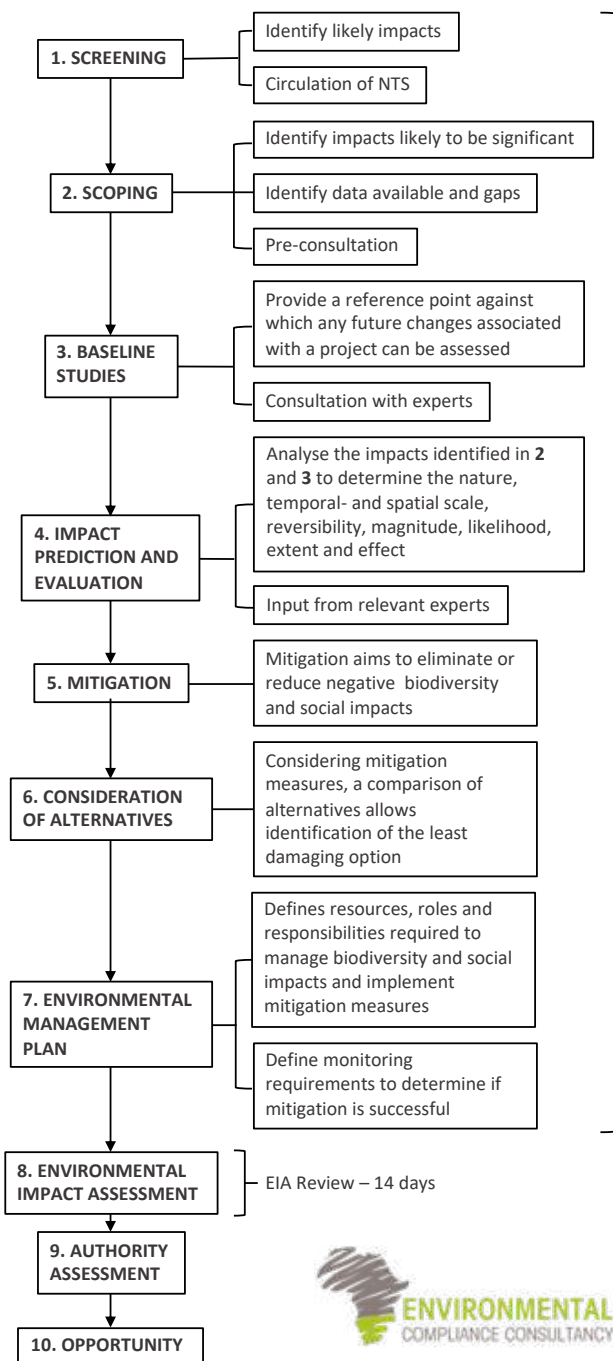


FIGURE 2 - FLOWCHART OF THE ENVIRONMENTAL ASSESSMENT PROCESS

4.1 SCREENING

A review of the proposed project screening findings against the listed activities was conducted; the findings of which are summarised below.

The potential environmental and social effects are anticipated to be of minor to medium significance (with mitigation), and those that may occur shall be contained within the ML 134 site and the town of Uis.

ENERGY GENERATION, TRANSMISSION AND STORAGE ACTIVITIES

(1.a) The construction of facilities for the generation of electricity;

- External diesel generators are in use on-site as an emergency backup power supply source to skeleton operations only in the event of a power failure.

(1.b) The construction of facilities for the transmission and supply of electricity;

- An existing 66-kilovolt powerline and associated infrastructure located within the Accessory Work Permit area of the ML will continue to be used. No upgrades are needed for the time being.

WASTE MANAGEMENT, TREATMENT, HANDLING AND DISPOSAL ACTIVITIES

(2.2) Any activity entailing a scheduled process referred to in the Atmospheric Pollution Prevention ordinance, 1976.

- Mining activities generate dust fallout which is being monitored on a monthly basis.
- Potential for noxious gas generation and emission.

(2.3) The import, processing, use and recycling, temporary storage, transit or export of waste.

- A rudimentary (Clarus Fusion WWTP) sewerage effluent water collection and treatment system exists on-site and is maintained by an external service provider and must be upgraded as part of the expansion scope to accommodate additional volumes. Sewage waste is collected on a monthly basis by a local contractor and disposed of at the local sewage plant.
- An industrial waste collection facility is in use within the processing plant physical boundaries.
- Overburden and plant discard material (>6mm) are transported and disposed of on the WRD site located within the mining licence footprint.
- Solid and Hazardous waste collection points are in use on the site.

MINING AND QUARRYING ACTIVITIES

(3.1) The construction of facilities for any process or activities which requires a licence, right or other form of authorisation, and the renewal of a licence, right or other form of authorisation, in terms of the Minerals (Prospecting and Mining Act), 1992.

- The current operations are permitted under an approved mining licence (ML 134).
- The resource in this case Tin is extracted, then manipulated within the processing plant and refined to tin metal sheets.

(3.2) Other forms of mining or extraction of any natural resources whether regulated by law or not.

(3.3) Resource extraction, manipulation, conservation and related activities.

FORESTRY ACTIVITIES

(4) The clearance of forest areas, deforestation, afforestation, timber harvesting or any other related activity that requires authorisation in terms of the Forest Act, 2001 (Act No. 12 of 2001) or any other law.

- There is the possibility of vegetation that may be cleared for the possible creation of new roads or new laydown areas.

WATER RESOURCE DEVELOPMENT

(8.1) The abstraction of ground or surface water for industrial or commercial purposes.

- Mining operations will continue to utilize groundwater and surface water sources for their processing requirements, dust suppression and human consumption.

(8.2) The abstraction of groundwater at a volume exceeding the threshold authorised in terms of a law relating to water resources.

- Currently, there is an abstraction permit that allows for a 75 000 cubic meters abstraction threshold per year valid for two years. An amendment application will be submitted to increase abstraction to 150 000 cubic meters per year to supply production needs.

(8.5) Construction of dams, reservoirs, levees and weirs.

- The expansion of the pilot plant project will entail the installation of a new CWC stormwater channel and berm around the pilot plant as well as an upgrade of the existing settling and evaporation ponds.

(8.6) Construction of industrial and domestic wastewater treatment plants and related pipeline systems.

- The pilot plant has an operational sewage effluent collection, treatment and disposal system in place. However, the need to upgrade this system exists to operate comfortably at an enlarged capacity of personnel on-site.

(8.8) Construction and other activities in watercourses within flood lines.

(8.9) Construction and other activities within a catchment area.

- The project falls within the Ugab catchment area.

HAZARDOUS SUBSTANCE TREATMENT, HANDLING AND STORAGE

9.1 The manufacturing, storage, handling or processing of a hazardous substance defined in the Hazardous Substances Ordinance, 1974.

- Petrol, diesel, liquid petroleum gas or paraffin will be stored for the vehicles and plants to function
- A diesel storage tank is installed on-site.
- Explosives are used for blasting purposes and may be stored on-site.

9.2 Any process or activity which requires a permit, licence or another form of authorisation, or the modification of or changes to existing facilities for any process or activity which requires an amendment of an existing permit, licence or authorisation or which requires a new permit, licence or authorisation in terms of a law governing the generation or release of emissions, pollution, effluent or waste.

- Licences will be obtained for all hazardous substances that will need to be stored on the site and will be used in the mining process. Licences will need to be obtained for facilities that will be storing these substances.

(9.4) The storage and handling of dangerous goods, including petrol, diesel, liquid petroleum gas or paraffin, in containers with a combined capacity of more than 30 cubic meters at any one location.

4.2 SCOPING

Due to the nature of the proposed project, and the implementation of industry best practice mitigation measures during the expansion of phase 2 of the project, the effects on the environment and society are expected to be minimal and localised, with mitigation. The main concerns are the impacts associated with ground and surface water pollution and air quality.

4.3 BASELINE STUDIES

For the proposed project, baseline information was obtained through a desk-based study, Specialists studies and site verification processes through focusing on the environmental receptors that could be affected by the proposed project. ECC will also engage with stakeholders, I&APs and the

proponents to seek input into the assessment.

4.4 IMPACT ASSESSMENT

Impacts will be assessed using the ECC ESIA methodology. The ESIA will be conducted in terms of the Environmental Management Act, 2007 and its regulations. ECC's methodology for impact assessments was developed using IFC standards in particular Performance Standard 1 'Assessment and management of environmental and social risks and impacts' (IFC 2012, 2017) and Namibian Draft Procedures and Guidance for ESIA and EMP (GRN, 2008) including international and national best practice with over 25 years of combined ESIA experience.

4.5 ENVIRONMENTAL MANAGEMENT PLAN

An EMP shall be developed for the proposed project setting out auditable management actions for Afritin Mining to ensure careful and sustainable management measures are implemented for their activities in respect of the surrounding environment and community.

4.6 PUBLIC PARTICIPATION AND ADVERTISING

Public participation is an important part of the ESIA process; it allows the public and other stakeholders to raise concerns or provide valuable local environmental knowledge that can benefit the assessment, in addition, it can aid the design process. This project is currently at the scoping phase and public participation phase.

At this phase ECC will perform the following:

- Identify key stakeholders, authorities, municipalities, environmental groups and interested or affected members of the public, hereafter referred to as I&APs;

- Distribute the BID for the proposed project (this document);
- Advertise the environmental application in two national newspapers;
- Place notices on-site at or near the boundary;
- If required host a public meeting to encourage stakeholder participation and engagement, and provide details of issues identified by the environmental practitioner, stakeholders and I&APs;
- Record all comments of I&APs and present such comments, as well as responses provided by ECC, in the comments and responses report, which will be included in the scoping report that shall be submitted with the application, and
- Circulate I&AP comments to the project team for consideration of project design.

Comments must be submitted in writing and can be emailed using the details in the contact us section below.

CONTACT US

We welcome any enquiries regarding this document and its content. Please contact:

Environmental Compliance Consultancy (ECC)

info@eccenvironmental.com

Tel: +264 81 669 7608

www.eccenvironmental.com

At ECC we make sure all information is easily accessible to the public.

Follow us online to be kept up to date:





RECEIVED BY OFFICIAL STAMP

Received by Name:

Date:

Signature:

REFERENCE: ECC-84-284-LET-08-A
8th September 2021

Dear Identified Stakeholder and or Potentially Interested Party:

RE: INVITATION TO A FOCUS GROUP MEETING FOR THE UIS TIN MINE EXPANSION STAGE II MINE PROJECT, UIS DISTRICT IN THE ERONGO REGION.

Environmental Compliance Consultancy (ECC) on behalf of our client Uis Tin Mining Company (Pty) Ltd would like to inform you of our intended, and upcoming, focus group meeting for the Uis Tin Mine Environmental and Social Impact Assessment. ECC is conducting the assessment in accordance with the Environmental Management Act, No. 7 of 2007, for which an application for an environmental clearance certificate will be submitted for the proposed expansion of mining and processing activities on ML 134 in the Erongo Region.

Uis Tin Mining Company (Pty) Ltd proposes several mechanical and process flow upgrades to components of the current pilot plant's processing and supporting infrastructure (i.e., upgrades to the Dense Medium Separation (DMS) 1 cyclone feed, inlet pressure system rates and constant moisture control within feed material, etc.) and therefore, an expected increase in the production rate from the current 80 Tons Per Hour (TPH) in stage 1 to 120 TPH in stage 2. To implement the proposed upgrades, various other supporting infrastructure on-site require an upgrade to be able to sustain and support the planned expansion project. The planned expansion will ensure a life of operations of 20 years.

This letter is to extend an invitation to you as an identified stakeholder and potentially Interested and Affected Party (I&AP) of the project and provide a communication channel with ECC. ECC wishes to invite you to attend the focus group meeting and



provide input to the environmental and social impact assessment (ESIA) as per the details below:

Focus Group Meeting:

Uis Settlement, Tuesday, 16th September 2021

Meeting Address: Uis Settlement Office, opposite the NamClay factory entrance

Time: **10:00 AM.**

We kindly request that you RSVP by email to info@eccenvironmental.com or phone on 081 669 7608 and confirm your attendance for the focus group meeting.

In addition to the above meeting, Uis Tin Mining Company (Pty) Ltd is committed to engaging all affected stakeholders through planned, ongoing public participation in as required.

ECC values community input and participation in our projects and we look forward to working with you as the project develops. Should you require further information, please do not hesitate to contact us.

Yours sincerely,

Stephan Bezuidenhout
Environmental Compliance Consultancy
Contact: 081 669 7608
Email: stephan@eccenvironmental.com

Jessica Bezuidenhout Mooney
Environmental Compliance Consultancy
Contact: 081 669 7608
Email: jessica@eccenvironmental.com

PUBLIC NOTICE



LODGING OF ANNUAL RETURNS AND PAYMENT OF ANNUAL DUTIES

The Business and Intellectual Property Authority (BIPA) hereby wish to bring to the attention of business owners of Close Corporations, Companies with share capital (PTY) and Companies incorporated under Section 21, that BIPA is commencing with a public awareness campaign on the submission of annual returns and payment of annual duties for the period 2012-2021. Kindly note the following information.

In terms of Section 181 of the Companies Act, 2004 (Act No. 28 of 2004) the lodging of annual returns is compulsory for all **Companies with a share capital**, and a lodging fee of N\$160.00 must accompany the annual return (CM23). The calculation of Annual duties is prescribed in Regulation 40 of the Regulations made under the Companies Act, 2004 (Act 28 of 2004).

Failure to lodge annual returns and the non-payment of annual duties as prescribed by the Companies Act, renders businesses non-compliant with the relevant legislative requirements and may result in entities incurring penalties and/or being subject to deregistration.

Take note that **Section 21 Companies** are obliged to lodge their annual returns, but are not required to pay an annual duty. **Close Corporation (CC)** shall not later than one month after the financial year, pay the prescribed annual duty in terms of Section 13 (2) of the Close Corporations Act, 1988 (Act No. 26 of 1988) as amended, read together with Regulation 11(1) of the Regulations made thereunder. The Corporation must, on the prescribed form (i.e. form CC7) lodge proof of such payment to the Registrar not later than forty-two days after the end of every financial year. Failure to pay annual duties as prescribed by the Close Corporations Act renders businesses non-compliant with the following legislative requirements.

1. The annual duty payable by Close Corporations is fixed at N\$ 120.00 as prescribed in terms of Regulation 5 to the Regulations (see Schedule 1 thereto) made under the Close Corporations Act, 1988; and
2. Pay such annual duty subject to the payment of additional fees according to the scales prescribed under Regulation 11(3) of the Regulations made under the Close Corporations Act.

The period for which BIPA is requesting the lodging of annual returns and the payment of annual duties are 2012 – 2021. In order to remain compliant with the relevant legislation and avoid punitive measures, business owners are encouraged to visit the BIPA offices and enquire about outstanding returns and fees.

Businesses that have already paid their annual duties for the period 2012-2021 are requested to assist BIPA in updating its records by submitting proof of payment for the respective years. Any entity with outstanding annual duties WILL NOT be allowed to make any amendments to their entity or be allowed to receive a good standing certificate from BIPA. For more information, kindly contact +264 61 299 4484/64/21 or send an email to debtors@bipa.na.

VIVIENNE KATJIUONGUA
REGISTRAR OF BUSINESS REGISTRATION AND INTELLECTUAL PROPERTY

*Good Standing makes for Good Business –
Submit your annual returns TODAY!*



The Ministry of Environment, Forestry and Tourism (MEFT), in partnership with the United Nations Development Programme (UNDP) and Environmental Investment Fund of Namibia (EIF), wishes to invite proposals through the Namibia Integrated Landscape Approach for Enhancing Livelihoods and Environmental Governance to Eradicate Poverty (NILALEG) Project Small Grants Facility.

Registered communal conservancies, gazetted community forests, community groups, farmer's associations, women's groups, youth groups and informal community groups (subject certain conditions) are all eligible to apply for a grant under this facility. The grant facility remains limited to the pre-determined landscapes of Omaopanga (Kunene Region), Ruacana (Omusati Region), Okongo (Ohangwena Region), Nkulivere (Kavango West Region) and Zambezi (Zambezi Region) while the anticipated proposals remain limited to the investment themes of agroforestry, sustainable rangeland/crop management and nature-based enterprises.

Grant proposals should be submitted on the EIF prescribed templates available at the EIF website, www.eif.org.na, or at EIF offices including grant application guidelines, the maps of the focal landscapes and other related forms.

Grant proposals should be addressed to:

Environmental Investment Fund of Namibia
NILALEG Project Grant Facility
Heinitzburg Heights
c/o Heinitzburg and Dr. Theo-Ben Gurirab Streets
Klein Windhoek, Windhoek

Proposals should be submitted to the EIF not later than 12 November 2021 at 17h00.
Both hardcopies and emails will be accepted.
For further **queries, kindly contact:**

Ms. Philadelphia Buys
EIF: NILALEG Project Coordinator
PBuys@EIF.ORG.NA or
Tel: 061 – 4317705

Ms. Kredula Shimwandi
EIF: Gender Intern KShimwandi@EIF.ORG.NA or
Tel: 061 – 4317736



adforce

RE-ADVERTISEMENT TENDER

MTC hereby invites appropriately qualified companies to apply for the following tender:

• MTC48-21-0:
REQUESTING PROPOSALS FOR SUPPLY, DELIVERY, INSTALLATION, COMMISSIONING AND MAINTENANCE OF SPECIALISED AIR CONDITIONING SYSTEMS AT THE MTC HEAD OFFICE IN OLYMPIA, WINDHOEK AND MTC OSHAKATI

BRIEFING MEETING:
24th September 2021
@ 10H00

BRIEFING MEETING VENUE:
Microsoft Teams, the link will be on MTC's website

CLOSING DATE:
Friday, 01st October, 2021 by 14H30

The Terms of Reference documents are available at: www.mtc.com.na

[f](https://www.facebook.com/mtc.com.na) [i](https://www.instagram.com/mtc.com.na) [@](https://www.linkedin.com/company/mtc-com-na) [mtc.com.na](http://www.mtc.com.na)

make the connection
mtc

NOTICE OF AN ENVIRONMENTAL ASSESSMENT & PUBLIC PARTICIPATION PROCESS FOR THE PROPOSED STAGE 2 EXPANSION OF THE PILOT TIN PROCESSING PLANT ON ML 134, ERONGO REGION, NAMIBIA.

Environmental Compliance Consultancy CC (ECC) hereby gives notice to the public that an application for an environmental clearance certificate in terms of the Environmental Management Act, No. 7 of 2007 will be made as per the following:

Applicant: Uis Tin Mining Company (Pty) Ltd
Environmental Assessment Practitioner (EAP): Environmental Compliance Consultancy
Location: Uis, Erongo Region, Namibia



Project: The proposed project involves the stage 2 expansion of the pilot tin processing plant and upgrades to the stormwater and effluent collection and treatment infrastructure around the pilot plant.

Location: All activities will take place on Mining Licence (ML) 134, held by Afritin Mining Namibia (Pty) Ltd, Erongo Region.

Proposed Activities: Uis Tin Mining Company (Pty) Ltd proposes several mechanical and process flow upgrades to components of the current pilot plant's processing and supporting infrastructure and therefore an expected increase in the production rate from the current 80 Tons Per Hour (TPH) in stage 1 to 120 TPH in stage 2. This equates to a life of Operations of 20 years.

Purpose of the review and registration period: The purpose of the review and registration period is to introduce the proposed project and to afford registered Interested and Affected Parties (I&APs) an opportunity to comment on the Background Information Document (BID) to ensure that all issues, and concerns are brought forward, captured and considered further in the assessment.

The registration period is effective from the 8th of September 2021 to 22nd of September 2021. I&APs and stakeholders are required to register for the project at: www.eccenvironmental.com/projects/ or email ECC to register.

The team at ECC will then maintain contact with all registered I&APs to keep them informed and engaged as the ESIA process develops. ECC will also provide registered I&APs with all relevant documents (Impact Assessment Report and EMP) to review during the assessment process.

Environmental Compliance Consultancy
Registration Number: CC/2013/11404
Members: Mr JS Bezuidenhout
or Mrs J Mooney
PO Box 91193, Klein Windhoek
Tel: +264 81 669 7608
E-mail: info@eccenvironmental.com

website: <http://www.eccenvironmental.com>
Project ID: ECC-128-355-ADT-05-D



AL-ANON
Help for
relatives of
Alcoholics

AL-ANON Family groups offer help for friends and relatives of alcoholics.

They provide assistance for people who live with alcoholics.

Dawnnam@gmail.com

VENUE: cnr Lüderitz and Kasino Street
DATE AND TIME: Thursdays at 19H00

info@eccenviro.com
 www.eccenviro.com
 +264812627872
 +264816531214



Meeting Attendance Register

Date: _____

Meeting Subject: Focus Meeting For the Affin UTM ESIA

Venue: UIS Settlement Office Boardroom

	NAME	ORGANIZATION	EMAIL ADDRESS	CONTACT NUMBER	SIGNATURE
1	JASON ANIKANA	LEK-LIS	jani@lekk.com	0813735391	
2	STANLEY TAYLOR	UTM	stanley.taylor@affin.com	0810099822	
3					
4					
5					
6					
7					
8					
9					
10					
11					

 info@eccenvironmental.com
 www.eccenvironmental.com
 +264812627872
 +264816531214





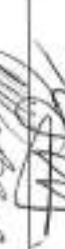




Meeting Attendance Register

Date: 19/10/2021

Meeting Subject: Public Meeting for the Affin UTM ESIA

Venue: Uis Settlement office Boardroom

	NAME	ORGANIZATION	EMAIL ADDRESS	CONTACT NUMBER	SIGNATURE
1	MR. I. Kamend	FARMERS etceters	—	0817387146	
2	Ranga Tobebe	ELREC	rtobebe@gmail.com	0812293976	
3	Julio Soares	Teknokrat Uis	soares@teknokrat.com	0812464417	
4	Auf Schwaner	Uis Tuhine	auf.schwaner@uf-tuhine.com	0811867395	
5	Amingo Honok	Uis-ERC	amingo.honok@gmail.com	081258970	
6	Johnnes Parisa	Brandberg sandstone	johnnes.parisa@gmail.com	0815072092	
7	Helen Ceinops	Brandberg PS	helen.ceinops@gmail.com	0813577133	
8					
9					
10					
11					



1



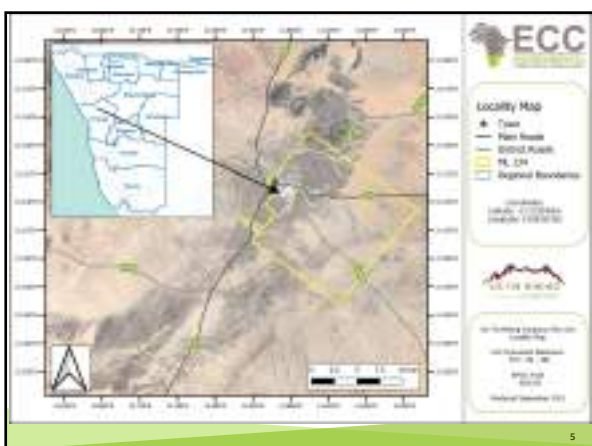
2



3



4



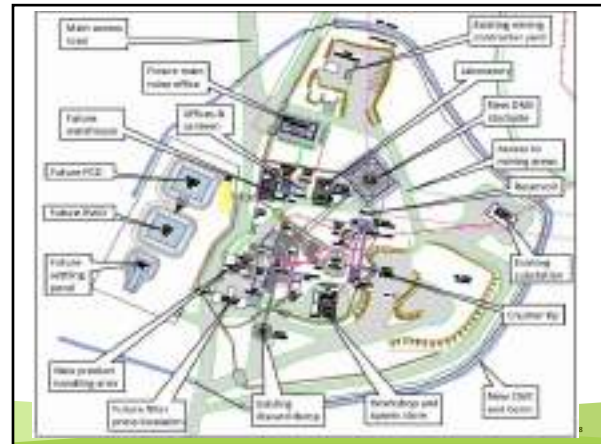
5



6



7



8



9

About Uis Tin Mining Company (Pty)Ltd...

- Nambian registered subsidiary of Afrifin Mining.
- Commenced infrastructure development in 2018 on the historical Uis Tine Mine footprint.
- The project is operating in two phases; phase 1 the current pilot plant that employs approximately 90 - 150 personnel, and phase 2 (future development) will be full scale mining which will employ 450 - 550 personnel.
- Uis Tin Mining Company (Pty) Ltd proposes several mechanical and process flow upgrades to components of the current pilot MHCP plant's processing and supporting infrastructure.
- Dewatering of the grits tailings (less than 630 microns),
- Dewatering of the slimes tailings (less than 45 microns) and
- Expanding the feed capacity to the spiral plant.
- The modifications are expected to more than double the throughput capacity of these circuits and therefore an expected increase in the production rate from the current 80 Tons Per Hour (TPH) in stage 1 to 120 TPH in stage 2. This equates to a life of Operations of 20 years.

10

ESIA Process

- Screening – Register the ESIA on the DEA Portal
- Scoping – Current Phase
 - Baseline Studies
 - Public Participation
 - Terms of Reference
- Assessment Phase

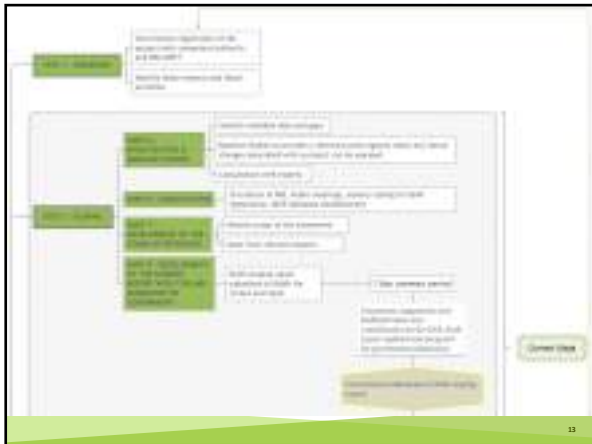
11

ESIA Process

- Screening – DEA PORTAL

ACTIVITIES THAT TRIGGERED A CLEARANCE CERTIFICATE APPLICATION
ENERGY GENERATION, TRANSMISSION AND STORAGE ACTIVITIES
WASTE MANAGEMENT, TREATMENT, HANDLING AND DISPOSAL ACTIVITIES
MINING AND QUARRYING ACTIVITIES
WATER RESOURCE DEVELOPMENT
HAZARDOUS SUBSTANCE TREATMENT, HANDLING AND STORAGE

12



13

Public Participation

- Notification of the project – newspapers & site notice boards
 - 8/09/2021 and 15/09/2021
- The Background Information Document (BID) provided I&APs with the opportunity to take part in the public participation process.
- This presentation extracts information from the BID to describe the project to those attending the meeting.

14

Process

- Screening - (DEA PORTAL)
- Scoping – Current Phase
- **Assessment Phase**
 - Impact prediction and evaluation of alternatives,
 - Assigning mitigation measures
 - Incorporating monitoring and conceptual rehabilitation plans.
 - This phase culminates in the drafting of the ESIA report and draft Environmental Management Plan (EMP) and
 - Submission to the appropriate competent authorities.

15

Baseline Studies Commissioned to date

BASELINE STUDIES	SPECIALIST
A baseline fauna and flora study is underway	Peter Cunningham
A noise baseline study was completed and results are being modelled	AirShed
An air quality baseline study is underway	AirShed
A heritage baseline study is underway	John Kinahan
TO BE COMPLETED	
Traffic surveys and report is outstanding.	
Vibration assessment	
Aquifer source sustainability assessment will be completed	
ACTIVE MONITORING	
Groundwater quality monitoring	
Depositional dust monitoring	

16

Potential Impacts to be assessed

- Potential impacts that can arise from the proposed project include but are not limited to:
 - Dust Pollution
 - Noise impacts
 - Visual impacts
 - Water resource impacts
 - Impact on archaeological and cultural features
 - Biodiversity impacts
 - Increased traffic volumes on public roads
 - Employment opportunities (permanent / temporary)
 - Growth of both local and regional economy
 - Others....

17

What you can do!

- Provide in writing, any issues and suggestions regarding the proposed development. This correspondence must include:
 1. Name & Surname;
 2. Organization represented;
 3. Position in the organization;
 4. Contact details and;
 5. Any direct business, financial, personal or other interest which you may have in the approval or refusal of the application.
- Send written submissions to info@eccenvironmental.com
- Or uploaded onto the ECC website

18

Questions / Discussion ?




19

www.eccenvironmental.com

19

Questions / Comments / Concerns



Name / Organisation	Comment / Concern

20

www.eccenvironmental.com

20

NOTICE OF AN ENVIRONMENTAL ASSESSMENT & PUBLIC PARTICIPATION PROCESS FOR THE PROPOSED STAGE 2 EXPANSION OF THE PILOT TIN PROCESSING PLANT ON ML 134, ERONGO REGION, NAMIBIA.

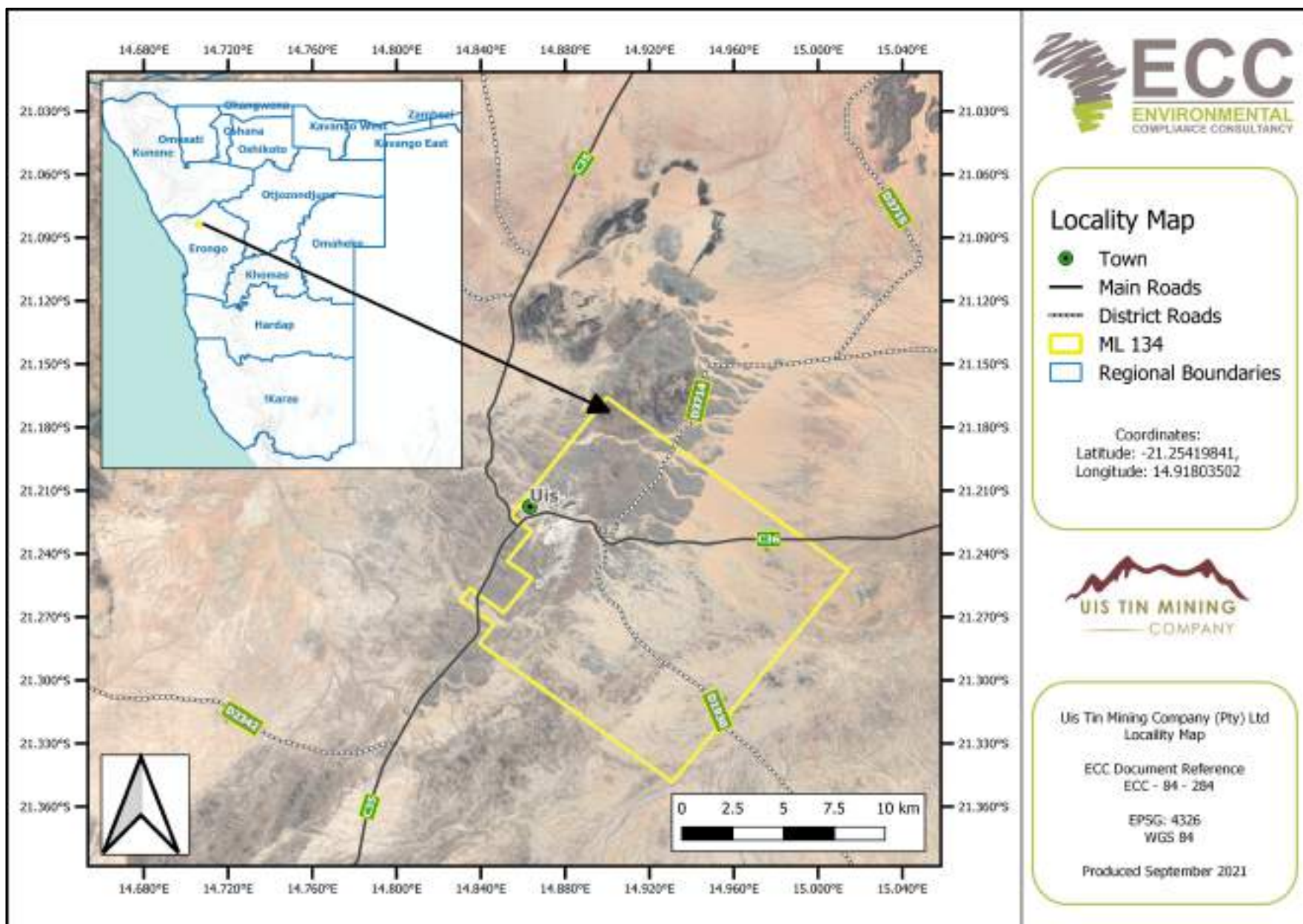
Environmental Compliance Consultancy cc (ECC) hereby gives notice to the public that an application for an environmental clearance certificate in accordance with the Environmental Management Act, No. 7 of 2007 will be made as per the following:

Applicant: Uis Tin Mining Company (Pty) Ltd
Environmental Assessment Practitioner (EAP): Environmental Compliance Consultancy
Location: Uis, Erongo Region, Namibia
Project ID: ECC-84-284

Proposed Project Activity: The proposed project involves the stage 2 expansion of the pilot tin processing plant on Mining Licence (ML) 134, held by Uis Tin Mining Company (Pty) Ltd.

Uis Tin Mining Company (Pty) Ltd proposes several mechanical and process flow upgrades to components of the current pilot plant's processing and supporting infrastructure and therefore an expected increase in the production rate from the current 80 Tons Per Hour (TPH) in stage 1 to 120 TPH in stage 2. This equates to a life of Operations of 20 years.

Proposed Project Area: Erongo Region, Namibia



I&APs Registration: The purpose of the registration period is to introduce the proposed project and to afford Interested and Affected Parties (I&APs) an opportunity to register and comment on the Background Information Document (BID), to ensure that potential issues and concerns are brought forward, so that they can be considered and assessed during the impact assessment process.

I&APs and stakeholders are required to register for the project at: www.eccenvironmental.com/projects

The team at ECC will then maintain contact with all registered I&APs to engage and to keep them informed as the ESIA process develops. ECC will also provide registered I&APs input opportunities and review periods throughout the assessment process.



Contact: Mr JS Bezuidenhout or Mrs J Mooney
Environmental Compliance Consultancy
Registration Number CC/2013/11404
PO Box 91193, Klein Windhoek
Tel: +264 81 669 7608
E-mail: info@eccenvironmental.com
Website: www.eccenvironmental.com/projects

LIST OF SDC MEMBERS FOR UIS SETTLEMENT

	NAME	INSTITUTION	PORTFOLIO	TEL	EMAIL
1.	Mr G.A. /Honneb	Uis Settlement (Chairperson)	CAO	0812545970	
2.	Mr J. S. Amukwa	Uis Settlement (Secretary)	SAO	0813735391	jsamukwa@gmail.com
3.	Ms Rejoice Thourus	Daures Youth Forum	Daures Youth Representative	0818710585	dankierotaun@gmail.com
4.	Snr. Cllr E. Gowaseb	Daures Traditional Authority	Senior Councilor	0812774628	
5.	Mr. Barend Gurirab	Uis Aquaculture Eco-Tourism Enterprise	PRO/Administrator	0812972217	
6.	Mr. Sebulon Ganinab	Agriculture (MAWF)	Senior Agriculture Technician (S.A.T)	0812350432	uisadc@gmail.com
7.	Mrs. Elder Gretschen Tauros	Churches Representative	Church Elder		
8.	Mr. Andrew Noabeb	MoHSS (Uis Clinic)	Registered Nurse/RN	064 504 011	andrewjosenoabeb@gmail.com
9.	Mr. Boois SR	Petrus Ganeb Sec. School	Head of Department	0812131196	
10.	Mr Johannes. M. Gariseb	Stone Sellers Rep	Small Scale Miner	0813092097	johannesgariseb@gmail.com
11.	Mr Eric Xaweb	Tsiseb Conservancy	Manager	0813479255	tsisebconservancy@gmail.com
12.	Mrs. Helena Geingos	Brandberg Primary School	Principal	0812577133	primaryschoolbrandberg@gmail.com
13.	Mr Isaskar Kamendu	Pensioners & Daureb Farmers Association	Pensioner and Farmer	0817327146	
14.	Mr. C. Basil	UPOA-Chairperson	Businessman	064504038	brandberg@africaonline@gmail.com
15.	Sgt Johanna Mandjoro	Nampol	Station Commander	0813241880	Petrinamuvangam@gmail.com
16.	Mr. Conradt Brandt	Rural Water Supply	Senior Extension Officer	0813542625	
17.	Mr. R. Tsiseb	Erongo Red	Electrician	0812293976	rtsiseb2@gmail.com
18.	Mrs Julia Gariases	Tatamutsi Dev. Committee-Chairlady	Businesswoman	0812464417	gariasesjulia20@gmail.com
19.	Ms Pauleen Shekutana	Namwater	Acting Area Manager	0811241928	
20.	Mr. M. Tjeuva	Ministry of Environment and Tourism	Ranger	0817746455	

LIST OF SDC MEMBERS FOR UIS SETTLEMENT

	NAME	INSTITUTION	PORTFOLIO	TEL	ATTENDANCE
1.	Mr G.A. /Honneb	Uis Settlement (Chairperson)	CAO	0812545970	
2.	Mr J. S. Amukwa	Uis Settlement (Secretary)	SAO	0813735391	Yes jsamukwa@gmail.com
3.	Ms Rejoice	Daures Youth Forum	Daures Youth Representative	0818710585	Yes dankierotaun@gmail.com
4.	Snr. Cllr E. Gowaseb	Daures Traditional Authority	Senior Councilor	0812774628	No
5.	Mr. Barend Gurirab	Uis Aquaculture Eco-Tourism Enterprise	PRO/Administrator	0812972217	
6.	Mr. Sebulon Ganinab	Agriculture (MAWF)	Senior Agriculture Technician (S.A.T)	0812350432	No uisadc@gmail.com
7.	Mrs Elder Gretschen Tauros	Churches Representative	Church Elder		No
8.	Mr. Andrew Noabeb	MoHSS (Uis Clinic)	Registered Nurse/RN	064 504 011	Yes andrewjosenoabeb@gmail.com
9.	Mr. Boois SR	Petrus Ganeb Sec. School	Head of Department	0812131196	No
10.	Mr Johannes. M. Gariseb	Stone Sellers Rep	Small Scale Miner	0813092097	Yes johannesgariseb@gmail.com
11.	Mr Eric Xaweb	Tsiseb Conservancy	Manager	0813479255	tsisebconservancy@gmail.com
12.	Mrs. Helena Geingos	Brandberg Primary School	Principal	0812577133	Yes primaryschoolbrandberg@gmail.com
13.	Mr Isaskar Kamendu	Pensioners & Daureb Farmers Association	Pensioner and Farmer	0817327146	
14.	Mr. C. Basil	UPOA-Chairperson	Businessman	064504038	brandberg@africaonline@gmail.com.na
15.	Sgt Johanna Mandjoro	Nampol	Station Commander	0813241880	Petrinamuvangam@gmail.com
16.	Mr. Conradt Brandt	Rural Water Supply	Senior Extension Officer	0813542625	
17.	Mr. R. Tsiseb	Erongo Red	Electrician	0812293976	Yes rtsiseb2@gmail.com
18.	Mrs Julia Garises	Tatamutsi Dev. Committee-Chairlady	Businesswoman	0812464417	Yes garisesjulia20@gmail.com
19.	Ms Pauleen Shekutana	Namwater	Acting Area Manager	0811241928	
20.	Mr. M. Tjeuva	Ministry of Environment and Tourism	Ranger	0817746455	

Text messages sent

Email request sent

Undecided



PROJECT: Proposed Phase 1, Stage 2 expansion of the Pilot Tin Processing Plant Project in Uis, Erongo Region, Namibia

JOB NO:

CONVERSATION WITH: I&APs

PERSONAL INTERVIEW:

COMPANY: AfriTin Mining

PHONE CONVERSATION:

ECC REP: Lester Harker and Matthew Bliss

TELEPHONE NUMBER:

PERSONS PRESENT: Matthew Bliss and Lester Harker I&APs

DATE: 19/10/2021 **TIME:** 16h00

SUBJECT: Public consultation for the mine expansion process for the project

Details of interview/conversation/meeting

1. Public Participation Meeting with I&APs and Uis Community.
2. 16:00PM-17:30PM, Tuesday the 19th of October 2021, at Uis Settlement Office, Board room.
3. **Present for ECC:** Matthew Bliss (MB) and Lester Harker (LH)
4. **Present for AfriTin Mining: Mr. Ralf Schommarz (Mine manager at the time).**
5. MB: Welcoming remarks, introduced the team and outlined the need for the public meeting for the proposed project.
6. MB: Commencement of presentation. Introduction of the meeting for the proposed project, details of ECCs involvement, briefly explained the importance of the public's participation for the Phase 1, stage 2 mine expansion and activities associated with that. Pinpointed the Environmental Social Impact Assessment (ESIA) process and the use of performance standard 1 of the IFC guidelines, Namibian legislation and best practice guidelines. An explanation of the scoping report procedure environmental clearance application procedure was given as well as the identification of triggered listed activities to inform the assessment scope. The potential impacts will also be set with community input and Discussed the importance of the public's opinion and its value to calculate long-term environmental and social impacts.
7. Mr Amingo – Control Administrative Officer of Uis town Club: 1. Assets of the previous mines were bought by Mr/Honneb, currently the regional council runs the town on which there are certain areas of land and waste caused by the previous mine which is in the vicinity of the town center. He asked who these belong to specifically the white sand and who to contact should the government want to make use of the sand. 2. Asked who the two ponds found close to their office and another one close to the mine belong to currently since they still have economic value.
8. MB: We do not know unfortunately, but that would be a very important piece of information that could be included in the report so that, with all the baseline data you end up having an ownership map or strata of ownership.
9. Mr Amingo – Control Administrative Officer of Uis town Club: 3. With the re-opening of the mine, as a resident there are high hopes of employment creation and social upliftment of the town thus,

pleads that core focus during employment should be on the local residents of Uis so as to create a sense of belongingness and take pride in the mine re-opening.

10. MB: The main message of our social sections would be about local and that would be a recommendation to you as a town, the company and the government to join forces and make that happen. The project expansion is early in the company's process that; they are using it to see how well it works before proceeding to the next step but we could liaise with the company on that to see what is required.
11. Mr R. Tsibeb – Erongo Red: Asked with regards to the baseline assessment of rehabilitation, what is the plan in place to rehabilitate the area.
12. MB: Unprocessed rocks that come out of a mine are usually stacked together with the fines that come out of processing which have little to no financial value. Currently, they are being disposed of by use of trucks and there is a top elevation that it will go to and in the end the area will be easier to grow any trees, grass or bushes. Also, we will recommend to the company that activities of that nature be included during mining operations to test out the feasibility of the rehabilitation initiative and it will be included in the report as well.
13. Mrs Julia Garises – Tatamutsi Dev. Committee- Chairlady: During the end of mining activities, the lives of the town residents take a different turn whereby jobs are lost and even the town service providers increase their trading prices (such as the municipality bills). Can this be taken in to consideration.
14. MB: It is difficult because the town was doing well until the regional/town council decide that bills will be increase given the low number of people remaining in the town. So, jobs, training and capacity building are significant for residents to sustain themselves one way or another. This will also be included in the report and since the project is still in its early stages, plans can be made taking the above-mentioned into account as was well communicated.
15. I&AP: Asked why development projects do not employ a few people from the town of project origin and train them physically to do the work.
16. MB: It is not always easy to do but given that this is a small project; it makes total sense.
17. I&AP: Emphasized the dust issue stating that the mine authority and proponent need to come together and discuss this as fugitive dust is a serious cause for concern for Uis inhabitants and those in nearby areas.
18. MB: Acknowledged the suggestion and takes note of the I&APs concerns.
19. Helena Geingos – Brandberg Primary School Principal: Asked if there are motivational programmes in place to introduce mining to the school going learners at the 2 local schools that might trigger their interest and may want to take up geology and mining related courses in future and then come back to work in their home town.
20. MB: It would be great to introduce such programmes and this can be done on a few occasions for instance during career day at the schools. Suggestion acknowledged and notes take on that.
21. Helena Geingos – Brandberg Primary School Principal: Further asked if in future schools will be permitted to plan day trips and bring learners to see the mine.
22. MB: It is not easy to do a mine tour unless it is fully shut down. Mine activities are mainly underground and the main priority with such operations is safety of personnel.
23. Mrs Julia Garises – Tatamutsi Dev. Committee- Chairlady: Asked if there will be any sponsorship

opportunities from the mine introduced destined for top performing learners to further their studies.

24. MB: Acknowledged the suggestion and takes note of the I&APs concerns.
25. I&AP: Asked if there are any measures in place to control the dust pollution and noise impacts as advancements in technology develop.
26. MB: From traffic, there is use of water trucks to control dust on site. There's also different kinds of salts and several others that can help pack the dust down, using water sprays at dusty points in the facility may work really well too. Recommending chemicals that may be seen as hazardous and toxic is not ideal in this regard, but there are several things that can be done to control that although it is quite hard since there is dust everywhere.
27. I&AP: 1. Asked why there are no more traffic cones used on the road leading to the site as a way of restricting vehicles from heading in that direction like they were used during the blasting stage. 2. Asked why there is no public communication for residents to take caution on the day of blasting and to keep their animals indoors too.
28. MB: This will be discussed with the proponent to pool together ideas on what they plan to do regarding the above-mentioned.
29. I&AP: Commended that, at the moment the road is not closed because there are no blasting activities taking place, the blasting site is also located far away from road and it is always kept locked for safety reasons.
30. I&AP: Asked how far the project expansion site is from the current area.
31. MB: The main part of the expansion and the mining place is going to be where it has been in the past, the mining operations are relatively small thus, there is no need for frequent blasting to feed the plant so the footprint is going to be equivalent to the previous one.
32. I&AP: Asked if it true that; there is a settlement farm 40 km outside Uis on the Henties Bay road and that area is proposed as a mine area where-by people are being forced to move
33. LH: If I may summarise, do you mean can the traditional authority not be used as an entity there to inform the people, specifically the Daures Traditional Authority.
34. I&AP: Agreed to what was summarised.
35. MB: Acknowledged the question and takes note of the I&APs concerns to probe further.
36. LH: Asked further what parties/entities/organisations were in agreement with the removal of the said farm inhabitants on the proposed mine area.
37. I&AP: Responded that when the meeting was held, the mine authority was present.
38. LH: Asked if that was that was in reference to the previous mine.
39. I&AP: Indicated that it was mentioned during the meeting that was done during the mine study meaning, it was not an agreement done but rather part of the presentation.
40. MB: Acknowledged the response and takes note of the I&APs concerns.
41. MB: Asked whether there were any further suggestions or comments.
42. Majority of the I&APs: Indicated that they had no further questions or comments.
43. MB: Thanked them for their time and acknowledged that the I&APs suggestions, concerns and questions were taken note of.

Commotion ensued and people started walking out.

LH: Reminded the I&APs, that they could forward their comments registry form to us via email and fill in their names and contact details on the meeting's register.

Meeting ended at 17:30PM