

1. Location of the EPL

The Exploration on an Exclusive Prospecting License (EPL) 6134 is located in the ||Kharas Region of Namibia, approximately 100 km west of Keetmanshoop along the national railway line and B4 highway to the port of Lüderitz (Figure 1). The coordinates for the EPL area are summarized in Table 1. Access to the property is provided by the railway, the B4 highway, the D3900 district gravel road, and several farms access gravel roads as shown in Figure 1.

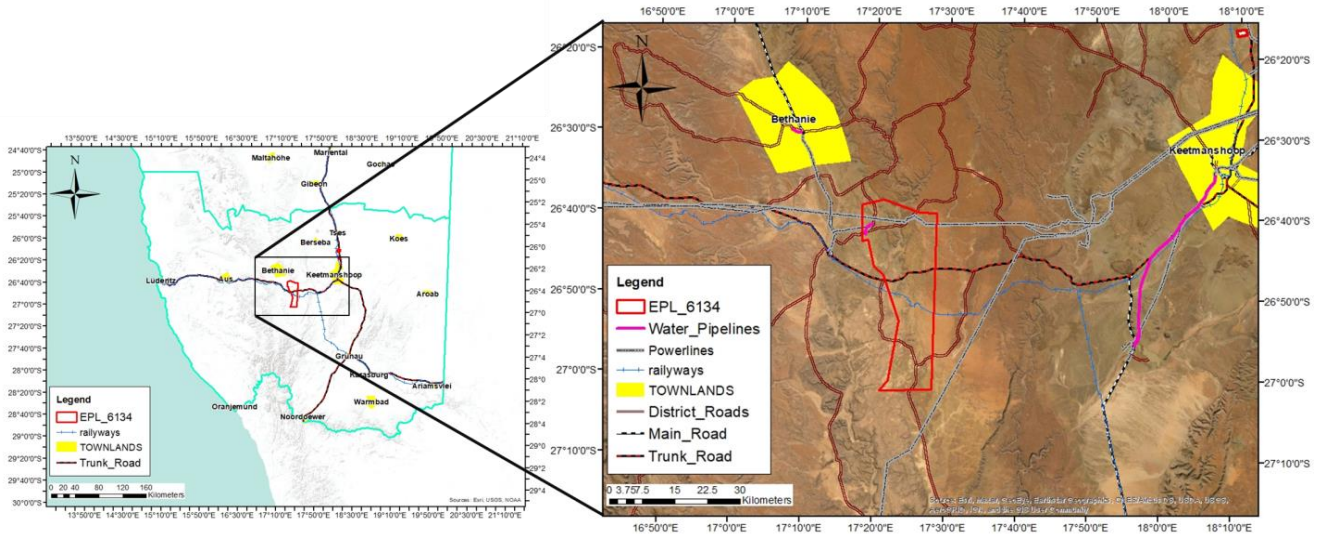


Figure 1. Locality of EPL 6134.

Table 1: Approximate UTM coordinates (Zone 33J) of EPL 6134 boundaries.

GPS Coordinates boundaries	
•	7050181.21 m S / 728949.75 m E
•	7051313.02 m S / 733887.04 m E
•	7048296.08 m S / 742224.71 m E
•	7048231.29 m S / 746076.24 m E
•	7007790.46 m S / 744806.86 m E
•	7007610.51 m S / 732801.79 m E
•	7009961.87 m S / 734704.10 m E
•	7023669.71 m S / 737184.11 m E
•	7034083.28 m S / 733837.19 m E
•	7035939.74 m S / 731543.99 m E
•	7042233.81 m S / 730280.10 m E
•	7041914.21 m S / 728900.58 m E

In terms of land ownership, EPL 6134 overlies the following commercial farms:

- Totem No. 92
- Feldschuhhorn West No. 90
- Feldschuhhorn East No. 88
- Sandverhaar No. 116
- Kesslersbrunn No. 78
- Kanas No. 77
- Klein Kanas No. 117 and
- Kosis No. 72 – communal land
- Schnepfenriver No. 73

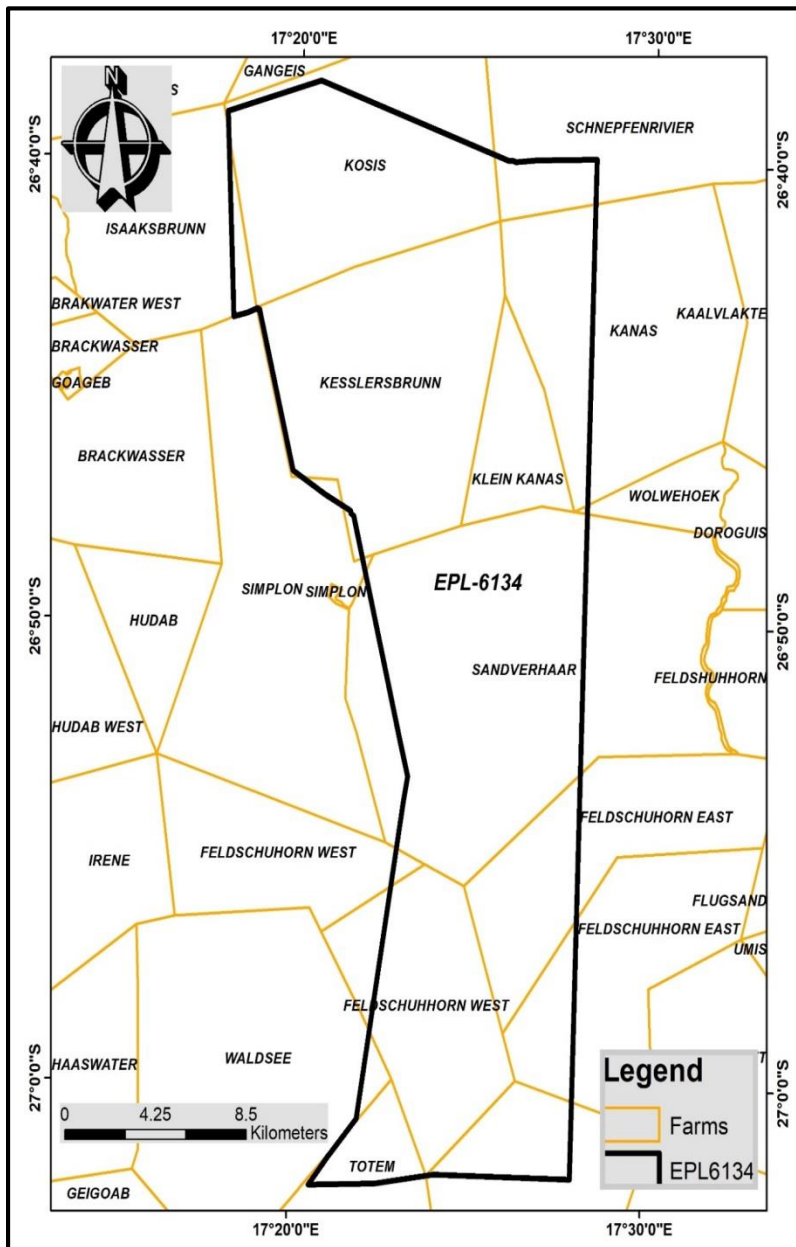


Figure 2: A spatial overview of the commercial farms EPL 6134 overlies.