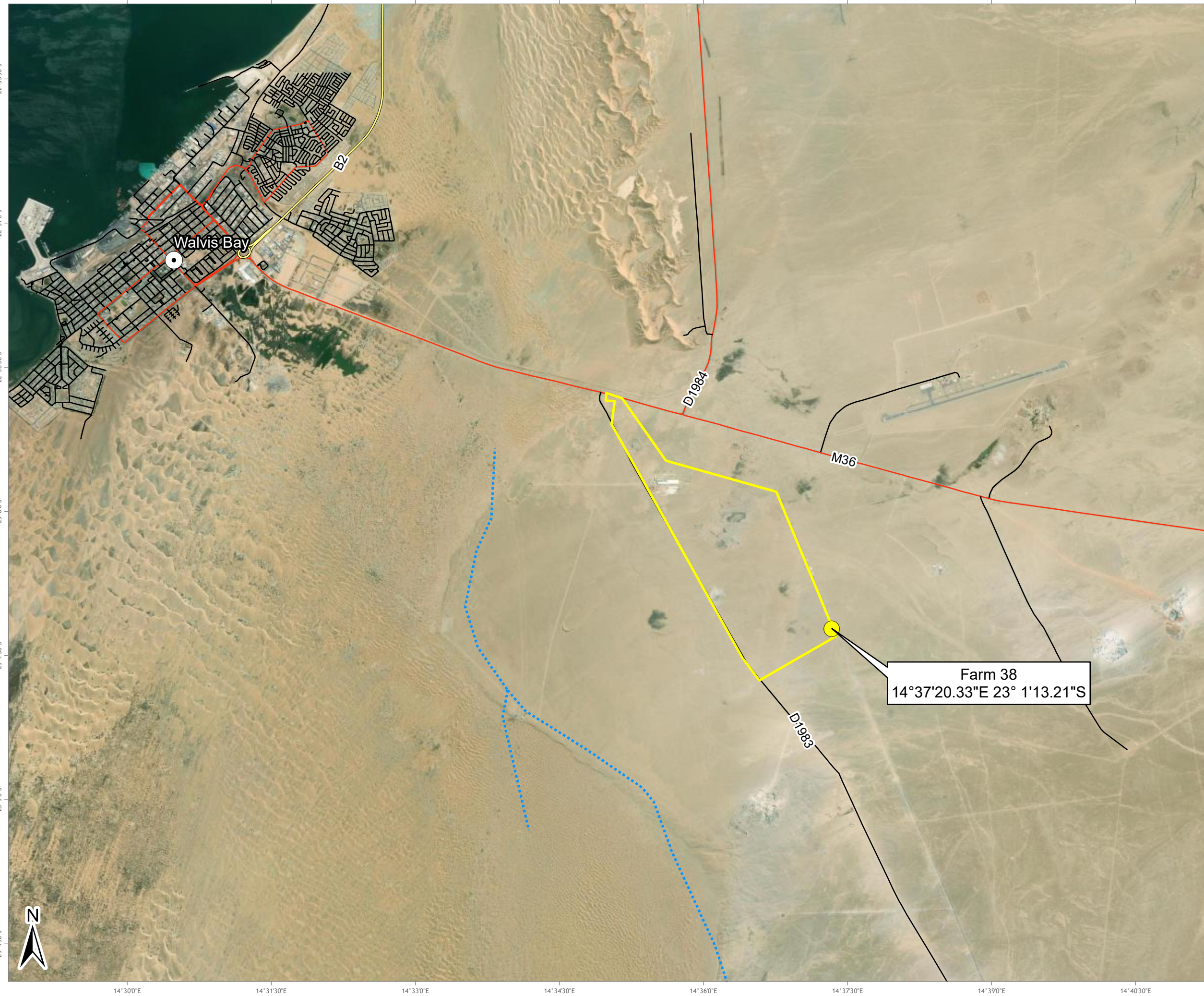


TOWNSHIP TO BE ESTABLISHED ON FARM 38: LOCALITY MAP



LEGEND

- Town
- Site Location
- ▭ Site Boundary

River Line

- ⋯ Non-Perennial

Road Network

- ▬ Major Road
- ▬ Main Road
- ▬ Road

Farm 38
 14°37'20.33"E 23° 1'13.21"S

Data Sources:
 Esri World Imagery Basemap

SCALE: 1:70 000

FIGURE NO.: -	MAP NUMBER: 21-0304-05-V2
DRAWN BY: N MBOKAZI GIS INTERN	REVIEWED BY: T DOMINY GIS ANALYST
DATUM: WGS84 PROJECTION: GEOGRAPHIC	DATE: 15 NOVEMBER 2021
PROJECT: ENVIRONMENTAL IMPACT ASSESSMENT FOR TOWNSHIPS IN WALVIS BAY	
CLIENT: MUNICIPALITY OF WALVIS BAY (NAMIBIA)	

63 Wessel Road Woodmead
PO Box 2597 Rivonia 2128
South Africa
Tel: +27 (0) 11 803 5726
Fax: +27 (0) 11 803 5745
E-mail: jhb@gcs-sa.biz
www.gcs-sa.biz