

Section 2

2. PROJECT DESCRIPTION

2.1 Location

The proposed school will be established on communal land at Omhamba Village. The portion of land is not occupied and is located 6.2 km from Outapi on the way to Okalongo.

The proponent has been allocated a portion of land measuring **4.27** ha in extent by the Village Headman of Omhamba Village, Mr. Onesmus Benyamin. The GPS Coordinates for the project site are as follows;

TABLE 1: GPS COORDINATES -NPS PROPOSED LOCATION

Points	Latitude	Longitude
A	-17° 29.808' S	15° 02.390' E
B	-17° 29.888' S	15° 02.440' E
C	-17° 29.965' S	15° 02.352' E
D	-17° 29.873' S	15° 02.277' E

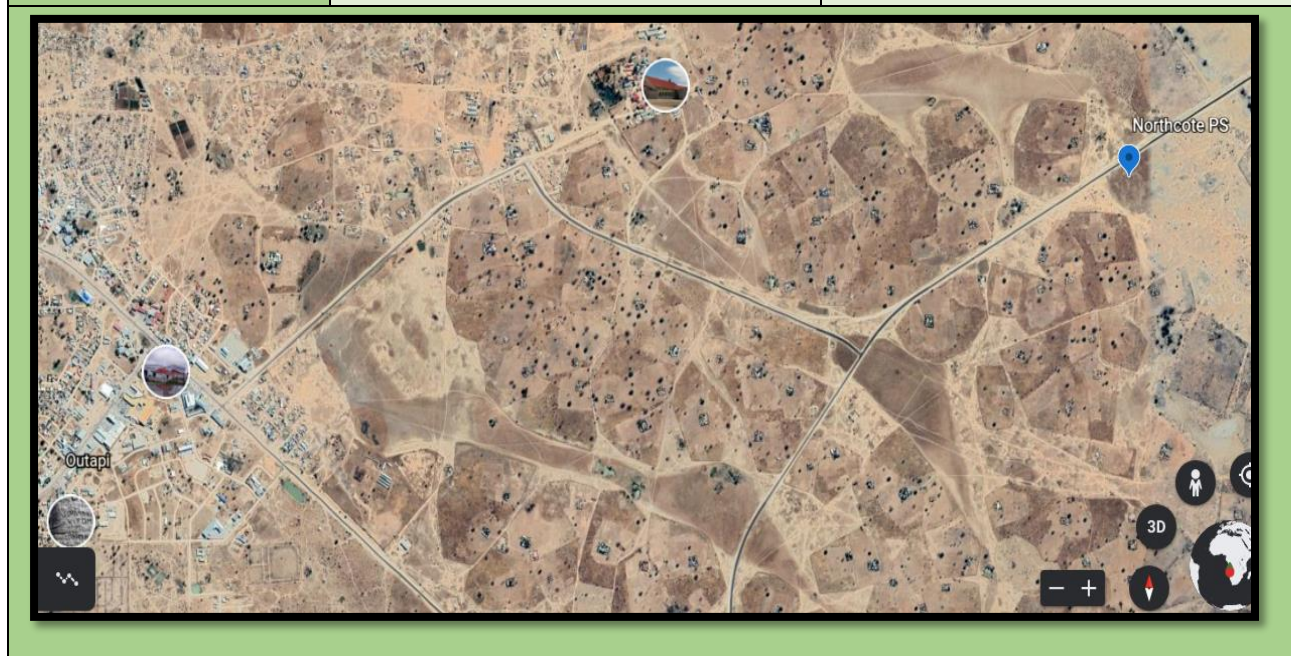




FIGURE 1: LOCATION MAP (SOURCE GOOD EARTH)



FIGURE 2: LOCATION MAP OF NPSS (SOURCE: GOOGLE EARTH)