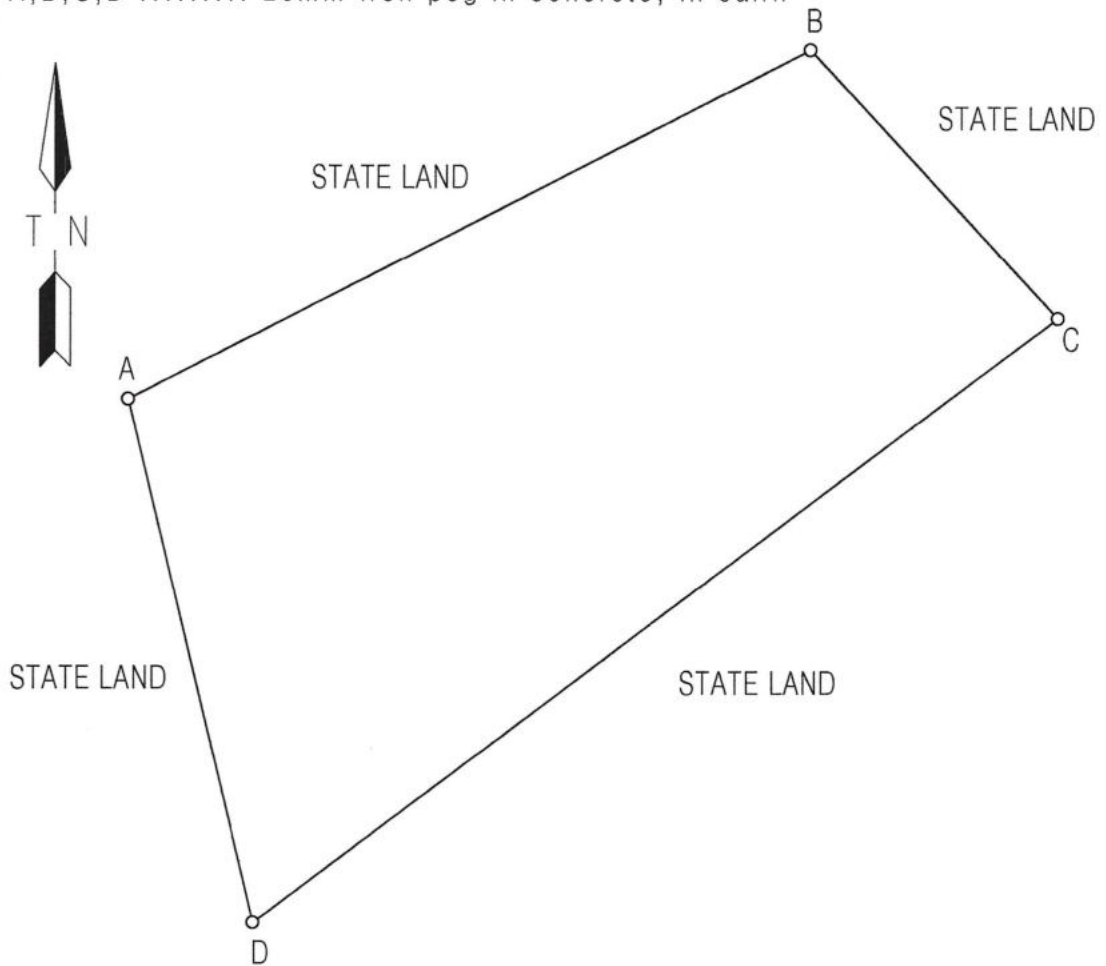


**ROSSING MOUNTAIN QUARRY AREA**

SIDES metres		ANGLES OF DIRECTION	GEOGRAPHICAL CO-ORDINATES (LAT/LONG) WGS84 (DEG:MIN:SEC)			DESIGNATION
A B	6 021,05	242.51.45	A	-22:31:36.56219	14:48:33.67099	ROSA
B C	2 873,24	317.22.39	B	-22:30:07.47080	14:51:41.26332	ROSB
C D	7 906,47	53.03.34	C	-22:31:16.25752	14:52:49.27781	ROSC
D A	4 235,53	166.33.31	D	-22:33:50.52494	14:49:07.94898	ROSD

DESCRIPTION OF BEACONS:

A,B,C,D ..... 20mm iron peg in concrete, in cairn



SCALE 1: 60000

The figure A B C D  
represents 2 369,1374 hectares of land , being

**ROSSING MOUNTAIN QUARRY AREA**

Situate in the Registration Division G

Erongo Region, Namibia

Surveyed in February 2019 by me

R.K.Munyonga

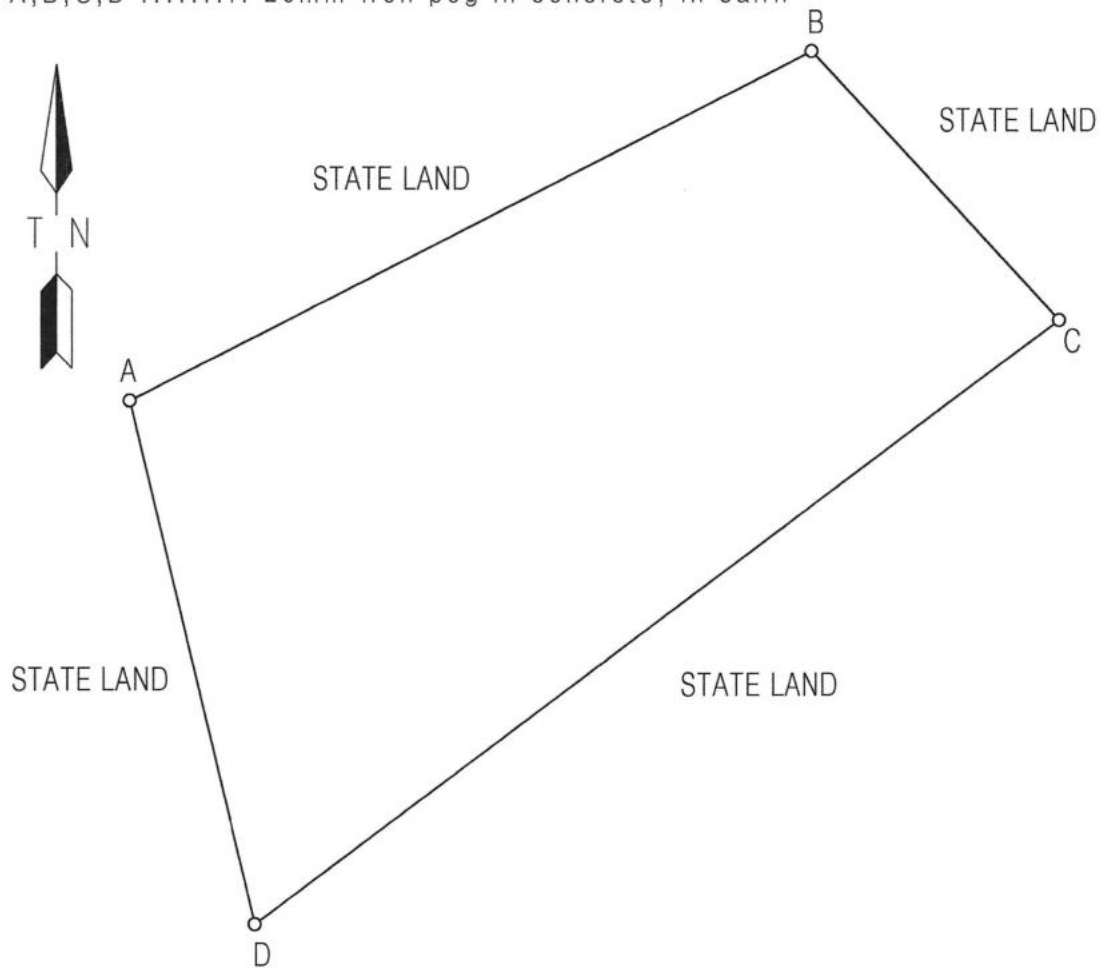
Professional Land Surveyor

**ROSSING MOUNTAIN QUARRY AREA**

SIDES metres		ANGLES OF DIRECTION	CO-ORDINATES Y System: 22/15 X			DESIGNATION
A B	6 021,05	242.51.45	A	+19 553,07	+58 298,23	ROSA
B C	2 873,24	317.22.39	B	+14 194,85	+55 551,87	ROSB
C D	7 906,47	53.03.34	C	+12 249,19	+57 666,08	ROSC
D A	4 235,53	166.33.31	D	+18 568,52	+62 417,75	ROSD

DESCRIPTION OF BEACONS:

A,B,C,D ..... 20mm iron peg in concrete, in cairn



SCALE 1: 60000

The figure A B C D  
represents 2 369,1374 hectares of land , being  
**ROSSING MOUNTAIN QUARRY AREA**  
Situate in the Registration Division G  
Erongo Region, Namibia

Surveyed in February 2019 by me

R.K.Munyonga  
Professional Land Surveyor