

ENVIRONMENTAL IMPACT ASSESSMENT: BACKGROUND INFORMATION DOCUMENT



PROPOSED ESTABLISHMENT AND OPERATION OF A RECIRCULATORY AQUACULTURE PRODUCTION PROJECT IN WALVISBAY, ERONGO REGION

PROPONENT: SOUTHERN AFRICA SEAFOODS AND PROCESSORS (PTY) LTD

ENVIRONMENTAL IMPACT ASSESSMENT-NOV 2023

INTRODUCTION

Southern Africa Seafoods and Processors (PTY) Ltd intends to construct a Recirculatory Aquaculture system in Walvisbay, the RAS is a technology where water is recycled and reused after mechanical and biological filtration and removal of suspended matter and metabolites. This method is used for high density culture of various species of fish utilizing minimum land and water. The species for the aquaculture project are as follows: Tilapia, Atlantic salmon, Abalone, Sea Cucumber, Yellow tail, Dusky Kob and Silver Kob

In this respect Junior Baiano Industrial Consultants (JBIC) cc have been appointed to carry out an Environmental Assessment study to obtain an environmental clearance certificate as per the requirements of the Ministry of Mines and Energy and the Ministry of Environment, Forestry and Tourism in terms of power generation facilities and clearance of land.

The study will incorporate biophysical, ecological and socio-economic baseline investigations relating to the proposed project.

In terms of the Namibian environmental Impact Assessment Regulations of 2012, an Environmental Clearance Certificate is to be obtained before the project can proceed.

7. Agriculture and Aquaculture Activities

7.1 Construction of facilities for aquaculture production, including mariculture and algae farms where the structures are not situated within an aquaculture development zone declared in terms of the Aquaculture Act, 2002.

AIMS & OBJECTIVES OF THIS EIA PROCESS

The aims of this EIA:

- To comply with Namibia's Environmental Assessment Policy, Environmental Management Act (No. 7 of 2007) with its 2012 EIA Regulations and;
- Consult all interested and affected parties such as local residents, town council and regional council to ensure that their inputs are taken into account;
- To assess the significance of issues and concerns raised;
- Review the legal and policy framework and its relevance to this project;
- Describe general and socio-economic environment of the project to determine impacts and suitability to the project site.
- Identify and assess impacts related to the continued operations.
- Compile an Assessment Report and Management Plan (EMP) which includes recommendations and methods to minimize the identified negative environmental impacts of the proposed project.
- To identify existing environmental conditions and associated environmental sensitivities within and adjacent to the project area that may potentially be affected, i.e. Environmental sensitivity and monitoring procedures.

THE PUBLIC PARTICIPATION PROCESS

The Public Participation Process (PPP) is an integral part of the EIA process whereby it allows the public to obtain information about the proposed project, to view documentation, to provide input and voice any concerns concerning the project. The Public Participation Processes that will be undertaken will include consultation with the local authority, line ministries, government extension offices, owners of neighboring properties and other I&AP's living around the proposed area.

During the meeting participants will be availed an opportunity to comment, ask questions and raise any concerns be it environmental or social regarding the proposed project. Comments will be recorded and considered in the Environmental Assessment report that will be submitted to the Ministry of Environment for review

PROJECT DESCRIPTION

The Company intends to construct a Recirculatory Aquaculture system in Walvisbay, the RAS is a technology where water is recycled and reused after mechanical and biological filtration and removal of suspended matter and metabolites. This method is used for high density culture of various species of fish utilizing minimum land and water. The species for the aquaculture project are as follows: Tilapia, Atlantic salmon, Abalone, Sea Cucumber, Yellow tail, Dusky Kob and Silver Kob

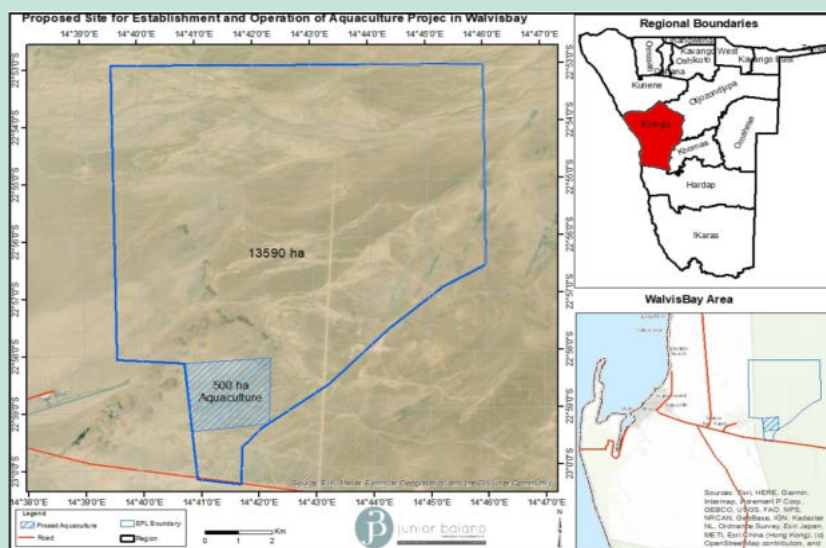
The operations will ensure compliance to land clearance requirements through obtaining a land clearance permit with MEFT.

PROJECT LOCATION

The project site is located on the Eastern side of the town boundaries of Walvis Bay, in the vicinity of Walvis Bay Airport and the Military base at Rooikop on state land

The exact project site is depicted below:

Figure1: Site Locality Map



ANTICIPATED PROJECT IMPACTS

Potential Impacts	Assessment to be Undertaken
Negative Impacts	
Land use Change (Aesthetic value)	baseline assessment
Impacts on fauna and Flora	JBIC EIA Team If there is need for specialist Assessment, the consultation process will Inform.
Impacts on surface and groundwater resources	JBIC EIA Team baseline assessment
Health and Safety hazards	JBIC EIA Team baseline assessment
Cumulative impacts of the project Operation	JBIC EIA Team baseline assessment
Positive Impacts	
Revenue generation	JBIC EIA Team baseline assessment
Aquaculture Production	JBIC EIA Team baseline assessment
Employment creation	JBIC EIA Team baseline assessment

HOW TO PARTICIPATE?

This Public Consultation process forms an important component of the Environmental Assessment process. It is defined in the EIA Regulations (2012), as a “process in which potential interested and affected parties are given an opportunity to comment on, or raise issues relevant to, specific matters” (S1).

You can participate through the following:

- Responding to the newspaper adverts for public meeting, availability of scoping report and decision made by MET.
- **A public meeting will be held on Tuesday, 28th of November 2023 at Narrville Community Hall**
- **Time: 14h00**

OUR CONTACT DETAILS.....

You can send all your comments and enquiries to the following:

Mr. Nghiyolwa, Fredrich
Tel: +264 (0) 81 147 2029
Email: JuniorB200581@gmail.com



Registration and Comments Form

**PROPOSED ESTABLISHMENT AND OPERATION OF A RECIRCULATORY
AQUACULTURE PRODUCTION PROJECT IN WALVISBAY, ERONGO REGION,
NAMIBIA**

KINDLY COMPLETE THIS FORM IN DETAIL AND RETURN TO:

Junior Baiano Industrial Consultants cc
PO Box 23537
Windhoek
Tel: 061 219 773
Cell: 0811472029
Email Address: JuniorB200581@gmail.com

Personal Details

Name & Surname.....
Postal Address..... Email
Town.....

What is your main area of interest regarding the proposed development?

.....
.....
.....
.....
.....

Do you have any points of concern or support regarding the proposed project? If "yes", please briefly list these in point format:

YES / NO

.....
.....
.....
.....
.....

Should this project go ahead? If no please specify reasons below:

YES / NO

.....
.....
.....
.....
.....