



Conway Westfalenhof

[click here for contact info](#)



YESTERDAY

Dear Interested and Affected Party,

We hope this message finds you well. We are writing to inform you about bush control activities currently underway on Farm Westfalenhof No.23 which is adjacent to your property. These activities primarily involve the harvesting of biomass and the generation of charcoal.

Our primary objective in carrying out these bush control activities is to promote a healthier and more sustainable ecosystem in our region by adhering to Forest Stewardship Council (FSC) standards. Bush encroachment can have detrimental effects on the local environment, water resources, and biodiversity. By managing and controlling bush growth, we aim to mitigate these impacts and restore the natural balance of our ecosystem.

We understand the importanc...[Read more](#)

🔊 09:24 ✓



Type a message





BLASER WESTFALENHOF

[click here for contact info](#)



YESTERDAY

Dear Interested and Affected Party,

We hope this message finds you well. We are writing to inform you about bush control activities currently underway on Farm Westfalenhof No.23 which is adjacent to your property. These activities primarily involve the harvesting of biomass and the generation of charcoal.

Our primary objective in carrying out these bush control activities is to promote a healthier and more sustainable ecosystem in our region by adhering to Forest Stewardship Council (FSC) standards. Bush encroachment can have detrimental effects on the local environment, water resources, and biodiversity. By managing and controlling bush growth, we aim to mitigate these impacts and restore the natural balance of our ecosystem.

We understand the importanc...[Read more](#)

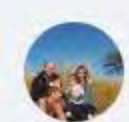
09:24 ✓



Type a message







Borg WESTFALENHOF

click here for contact info



YESTERDAY

Dear Interested and Affected Party,

We hope this message finds you well. We are writing to inform you about bush control activities currently underway on Farm Westfalenhof No.23 which is adjacent to your property. These activities primarily involve the harvesting of biomass and the generation of charcoal.

Our primary objective in carrying out these bush control activities is to promote a healthier and more sustainable ecosystem in our region by adhering to Forest Stewardship Council (FSC) standards. Bush encroachment can have detrimental effects on the local environment, water resources, and biodiversity. By managing and controlling bush growth, we aim to mitigate these impacts and restore the natural balance of our ecosystem.

We understand the importanc...[Read more](#)

09:24 ✓✓



Type a message





Gerry WESTFALENHOF

click here for contact info



YESTERDAY

Dear Interested and Affected Party,

We hope this message finds you well. We are writing to inform you about bush control activities currently underway on Farm Westfalenhof No.23 which is adjacent to your property. These activities primarily involve the harvesting of biomass and the generation of charcoal.

Our primary objective in carrying out these bush control activities is to promote a healthier and more sustainable ecosystem in our region by adhering to Forest Stewardship Council (FSC) standards. Bush encroachment can have detrimental effects on the local environment, water resources, and biodiversity. By managing and controlling bush growth, we aim to mitigate these impacts and restore the natural balance of our ecosystem.

We understand the importanc...[Read more](#)

09:24 ✓



Type a message







TOMAS WESTFALENHOF

click here for contact info



YESTERDAY

Dear Interested and Affected Party,

We hope this message finds you well. We are writing to inform you about bush control activities currently underway on Farm Westfalenhof No.23 which is adjacent to your property. These activities primarily involve the harvesting of biomass and the generation of charcoal.

Our primary objective in carrying out these bush control activities is to promote a healthier and more sustainable ecosystem in our region by adhering to Forest Stewardship Council (FSC) standards. Bush encroachment can have detrimental effects on the local environment, water resources, and biodiversity. By managing and controlling bush growth, we aim to mitigate these impacts and restore the natural balance of our ecosystem.

We understand the importanc...[Read more](#)

09:24 ✓



Type a message

