

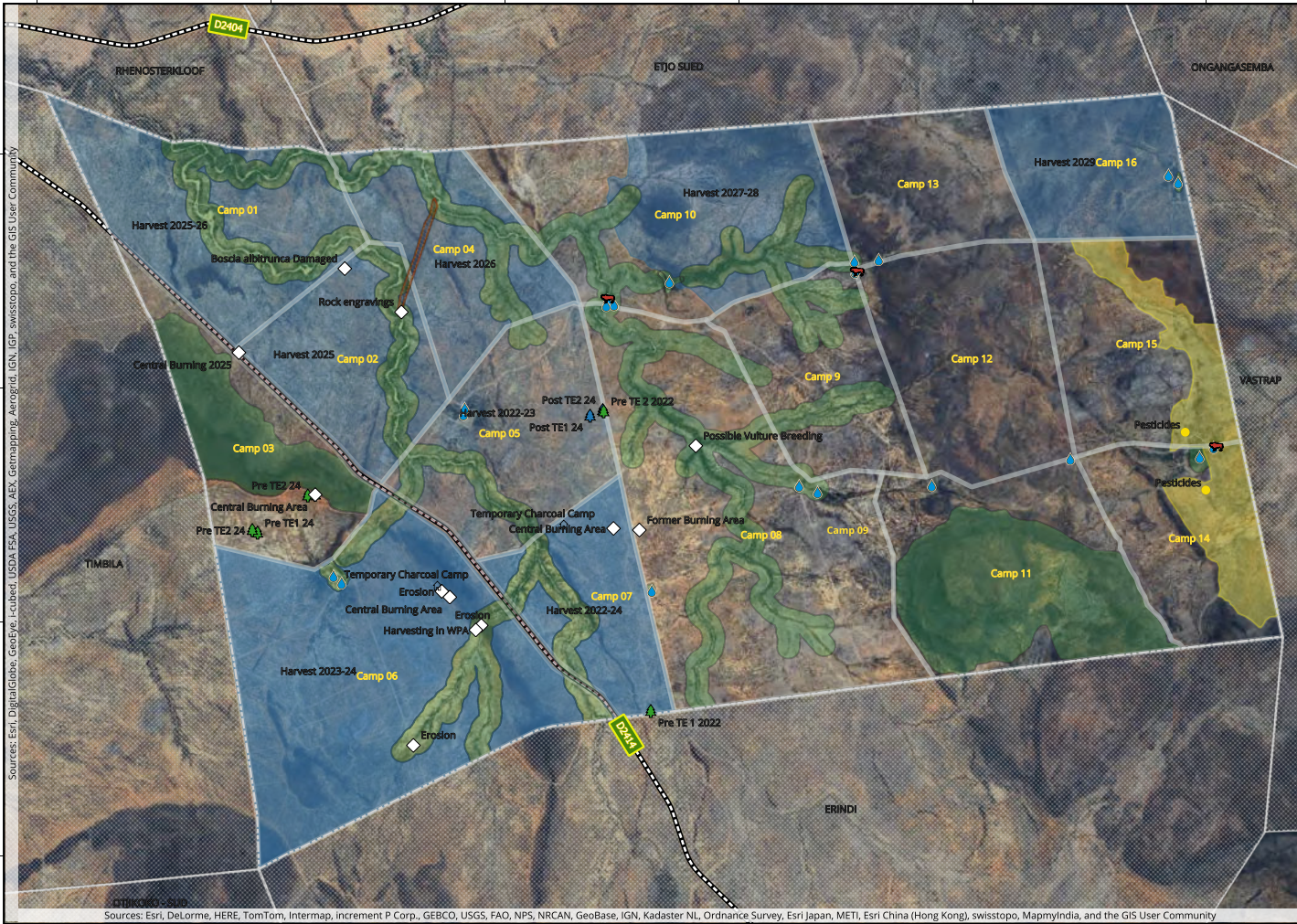
16.42 16.44 16.46 16.48 16.50 16.52

-21.18

-21.20

-21.22

-21.24



Sources: Esri, DeLorme, HERE, TomTom, Intermap, increment P Corp., GEBCO, USGS, FAO, NPS, NRCAN, GeoBase, IGN, Kadaster NL, Ordnance Survey, Esri Japan, METI, Esri China (Hong Kong), swisstopo, MapmyIndia, and the GIS User Community

Sources: Esri, DeLorme, HERE, TomTom, Intermap, increment P Corp., GEBCO, USGS, FAO, NPS, NRCAN, GeoBase, IGN, Kadaster NL, Ordnance Survey, Esri Japan, METI, Esri China (Hong Kong), swisstopo, MapmyIndia, and the GIS User Community



Legend

- Accommodation
- Cattle Posts
- Others
- Pan Dam WaterP
- Pesticides
- Pre TE Counts
- Post TE Counts
- District road
- Okaturua 57
- Camps
- Rock Engravings
- Neighbouring Farms
- Firebreaks
- Chemicals
- Excluded Areas
- Harvest 2022-23
- Harvest 2023-24
- Harvest Post 2024
- WPA

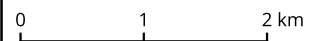
Site coordinates:

Latitude: -21.211588

Longitude: 16.465033

EPSG:4326 WGS 84

Scale 1:50 000



Reference: ECC/09/104/27

Cartography: E Augello 02/2024