



**Physical Address:** 112, Robert Mugabe Avenue, Windhoek

**Postal Address:** PO Box 997154 Maerua Mall, Windhoek

**Telephone:** +264 (0) 61 259 530      **Fax2email:** +264 (0) 886 560  
836

**Email:** [info@edsnamibia.com](mailto:info@edsnamibia.com)

**Web:** [www.edsnamibia.com](http://www.edsnamibia.com)

## **BACKGROUND INFORMATION DOCUMENT**

**ENVIRONMENTAL SCOPING ASSESSMENT (ESA) FOR THE PROPOSED SMALL- SCALE MINING ACTIVITIES ON MINING CLAIMS NO.75078 - 75087, LOCATED WEST OF FRANSFONTEIN, KUNENE REGION.**

**Environmental Consultant:**

Excel Dynamic Solutions (Pty) Ltd

**Proponent:**

Violet Maria Haoses

**December 2023**

## 1 INTRODUCTION

Excel Dynamic Solutions (Pty) Ltd (the consultant) has been appointed by Violet Maria Haoses (the proponent) to act on their behalf in obtaining an Environmental Clearance Certificate (ECC) for the proposed small-scale mining activities on Mining Claim No. 75078 - 75087. The target commodities for the proposed mining activities are **Base & Rare Metals , Industrial Minerals and Semi-Precious Stones**. The 172. 8342 ha MCs are located about 40 km west of Fransfontein in Kunene Region and they are covering Fransfontein Reserve no. 6 (**Figure 1 & Figure 2**). The proposed site is accessible via the D 2625 that diverted from the C35.

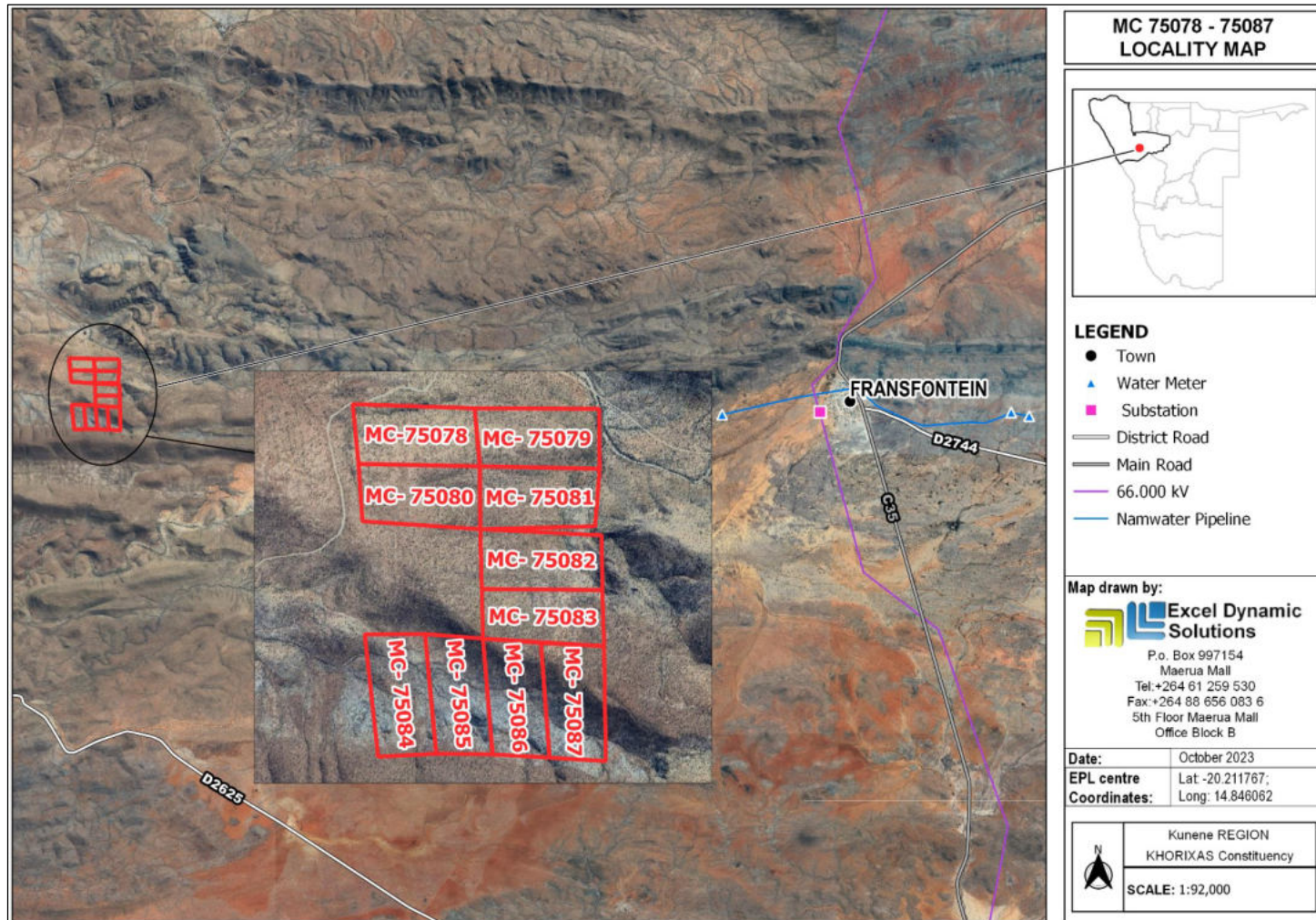


Figure 1: Locality map of MCs No. 75078 - 75087 located near Fransfontein, Kunene Region, Namibia



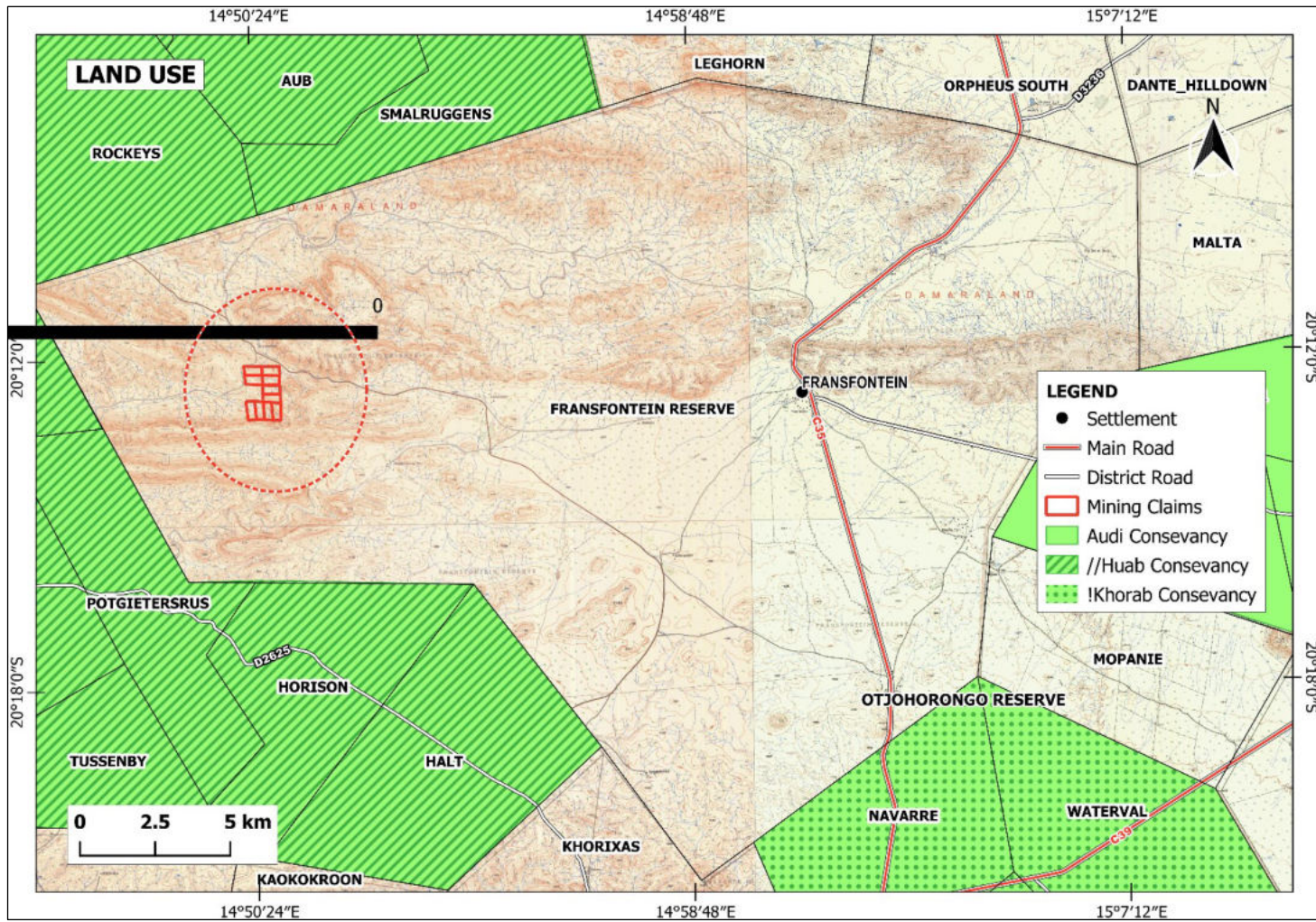


Figure 2: The land use map for MCs 75078 - 75087

## 2 PURPOSE OF THIS DOCUMENT

This is a non-technical document of the Environmental Scoping Assessment (ESA), which serves the purpose of informing Interested and Affected Parties (I&APs) / stakeholders of the following:

- Project location;
- Proposed activities of the project;
- Environmental Impact Assessment (EIA) process to be followed;
- How I&APs and/or stakeholders can be involved.

All I&APs and/or stakeholders are hereby encouraged to submit their comments/inputs/concerns on the proposed project activities, which can contribute significantly to the Environmental Scoping Report (ESR) and Environmental Management Plan (EMP). The EIA and EMP will be submitted to the Ministry of Environment, Forestry and Tourism (MEFT) and Ministry of Mines and Energy (MME) for decision-making.

## 3 ENVIRONMENTAL AUTHORISATION

In terms of the Environmental Management Act No.7 of 2007 and the EIA Regulations of 2012, the proposed project triggers listed activities that cannot be undertaken without an ECC. As such, an environmental clearance application will be submitted to the competent authorities (MEFT and MME) for decision-making before the commencement of the anticipated project activities.

The listed activities that trigger the proposed project are as follows:

### MINING AND QUARRYING ACTIVITIES

**3.1** *The construction of facilities for any process or activities which requires a license, right, or other forms of authorization, and the renewal of a license, right, or any other form of authorization in terms of Minerals (Prospecting and Mining Act), 1992.*

**3.2** *Other forms of mining or extraction of natural resources whether regulated by law or not.*

**3.3** *Resource extraction, manipulation, conservation, and related activities.*

### FORESTRY ACTIVITIES

**4.** *The clearance of forest areas, deforestation, afforestation, timber harvesting or any other related activity that requires authorization in terms of the Forest Act No. 12 of 2001 or any other law.*

- If required to access target sites, minimal vegetation clearing or thinning shall be conducted, but this will only be for dirt road.

## 4 PROJECT DESCRIPTION

The small scale mining activities contributes significantly to Namibia's economic sector such as local employment creation, as well as contributing to local, regional, national, and international economic growth.,therefore Violet Maria Haoses is interested in small scale mining of commodities and has identified an opportunity to mine **Base and Rare Metals, Industrial and Semi - Precious Stones** on a Mining Claims No. 75078 - 75087. The project activities will be undertaken for the anticipated plus or minus three (+-3) years.

### 4.1 Project Plan and Activities

The proposed exploration activities methods are divided into two (2) categories:

- Phase 1: Non-invasive techniques e.g., This phase includes Geological mapping, reviewing of existing geological maps, field evaluation and sampling,
- Phase 2: Invasive techniques e.g., Pitting using excavators and jack hammers, trenching/digging, and blasting.

### 4.2 Resources, Services, and Infrastructure

The proposed small scale mining activities will require the following services and infrastructure to progress smoothly:

**Human resources and accommodation:** Twenty (20) workers for the project. This workforce will include general, skilled, and semi-skilled workers. Some security workers will also form part of the workforce. Workers will be accommodated onsite in a camp. There will be onsite containers for office space.

**Water supply:** About 6,000 liters of water will be required per month for domestic use mainly and equipment cleaning, where needed (no water needed for production). This water will be carted to site or drilling the borehole once the necessary permits are obtained.

**Fuel supply for machinery and equipment:** The power supply needed will be provided by diesel-powered generators. About 600 litres of diesel and 200 litres of petrol per month will be required.

**Equipment and vehicles:** 2x bakkies (pickup trucks), generators, excavator, and jack hammer.

**Sewage:** A mobile ablution facility will be provided on-site and wastewater will be removed and transported to the nearest approved disposal facility.

**Solid waste:** Sufficient jackal-proof waste bins will be provided across the exploration sites and they will be emptied – and disposed of at the nearest approved waste facility.

**Hazardous waste:** Hazardous waste such as fuel/oils will be appropriately stored in a standardized banded container for disposal at an approved facility.

**Health and safety:** Adequate and appropriate Personal Protective Equipment (PPE) will be provided to project personnel – with at least a first aid kit available onsite.

**Accidental fire outbreaks:** firefighting equipment, including extinguishers, will be readily available in vehicles as well as at the appropriate sites.

## **5 ENVIRONMENTAL ASSESSMENT**

The ESA and EMP methodology applied for this project takes into account the provisions of the Environmental Management Act No. 7 of 2007, and the EIA Regulations, 2012. The overall objective of the ESA is to identify potential negative impacts associated with the proposed project that shall be assessed and provide potential effective mitigation measures for implementation.

The main objectives of this ESA are, but are not limited to:

- Identification of potential impacts associated with the proposed project.
- Consultation with the I&APs and relevant authorities and provide them with an opportunity to participate throughout the ESA process.
- Assess the significance of issues and concerns raised.
- Compile the ESA report addressing all potential identified issues and impacts.
- Draft an EMP that includes impact management and mitigation measures.

### **5.1 Potential Impacts**

The following potential socioeconomic and environment impacts are anticipated during the mining activities:

#### **Positive impact:**

- Employment creation and skills transfer
- Investment opportunities/infrastructure-related development benefits
- Increase in local, regional and economic development
- Improved support for local businesses through the procurement of locally available goods and services.

#### **Negative impacts:**

- Communal grazing disturbance
- Physical land or soil disturbance
- Impact on fauna and flora through habitat disturbance and possible poaching
- Minor noise and vibration pollution
- Minor air pollution through dust generation
- Possible occupational community health and safety risks/hazards
- Minor waste pollution
- Possible impact on archaeological or cultural heritage
- Potential social nuisance and land use conflicts

Other potential impacts may be identified as the ESA process progresses. All impacts and public concerns/comments will be incorporated and addressed in the ESA and EMP reports.

## **5.2 Public Consultation Process**

Public participation is an important part of the EIA process, which ensures that sufficient information is gathered from and/or shared transparently with all I&APs and stakeholders, including the findings of the reports, during the specified comment periods.

I&APs are hereby invited to comment on environmental, social, and economic issues relating to the proposed project.

To comment or receive further information on the proposed project, please register with Excel Dynamic Solutions (Pty) Ltd as an I&AP at the address below.

**Contact: Mandume Leonard**

**Tel: +264 (0) 61 259 530**

**Email: [mleonard@edsnamibia.com](mailto:mleonard@edsnamibia.com)**