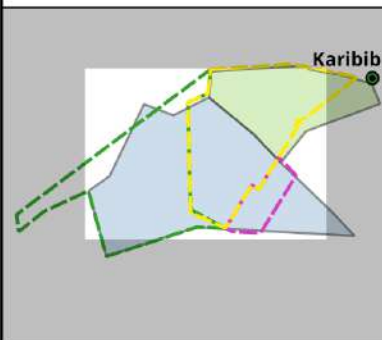
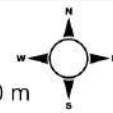


**Legend**

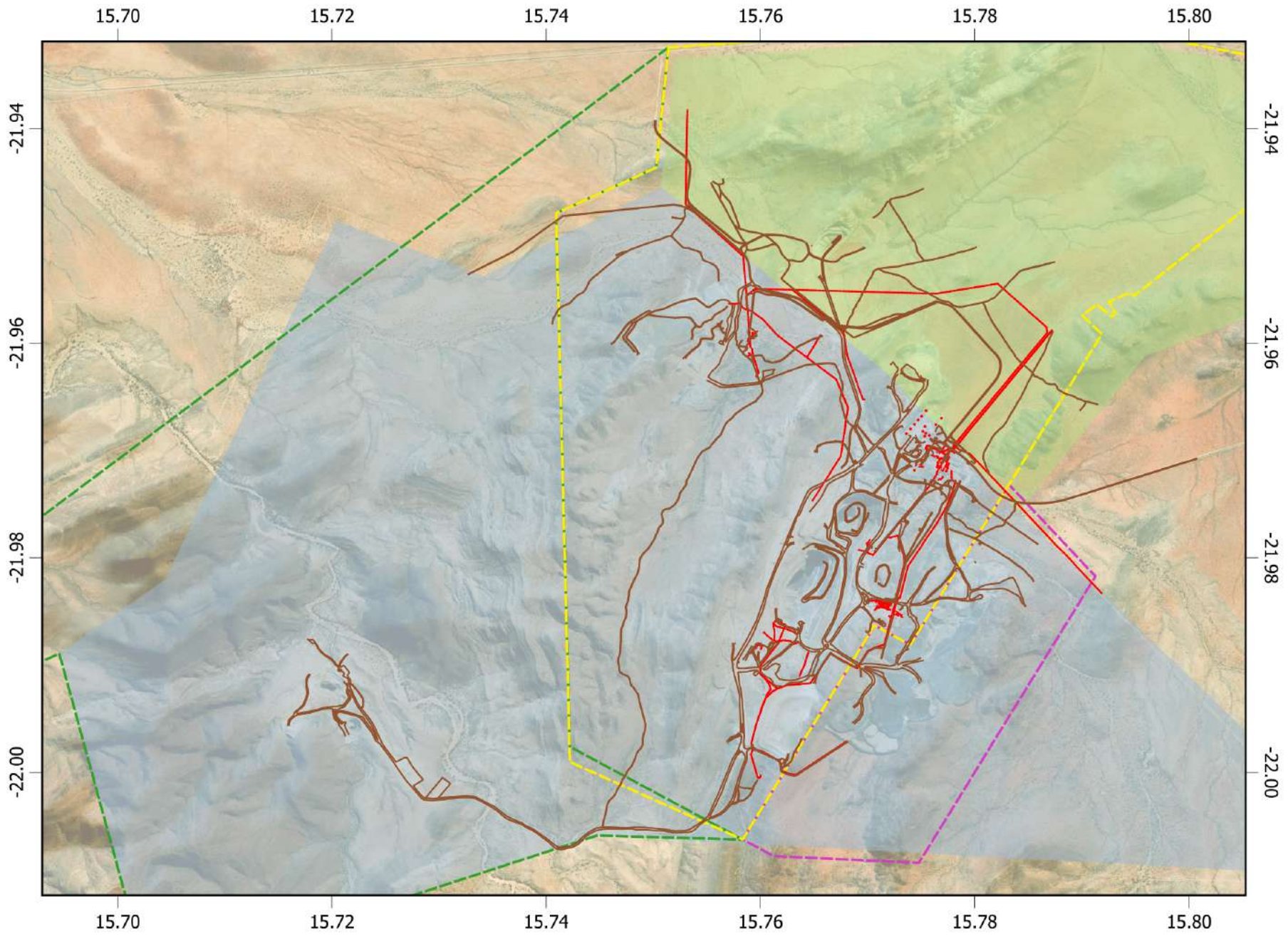
- Towns
- Roads
- Powerlines
- ▭ ML 31
- ▭ ML 180
- ▭ Accessory Works Area
- ▭ Farm Karibib
- ▭ Farm Navachab



EPSG:4326 WGS 84  
Scale 1:50,000



Reference: ECC/107/408  
Cartography: J le Roux 08/2022



15.765

15.770

15.775

15.780

15.785

-21.965

-21.965

-21.970

-21.970

-21.975

-21.975

15.765

15.770

15.775

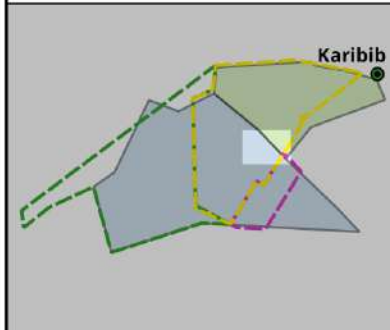
15.780

15.785



**Legend**

- Towns
- ▭ ML 31
- ▭ ML 180
- ▭ Accessory Works Area
- ▭ Farm Karibib
- ▭ Farm Navachab
- Infrastructure
- ▭ Office
- ▭ Security entrance
- ▭ Staff Parking

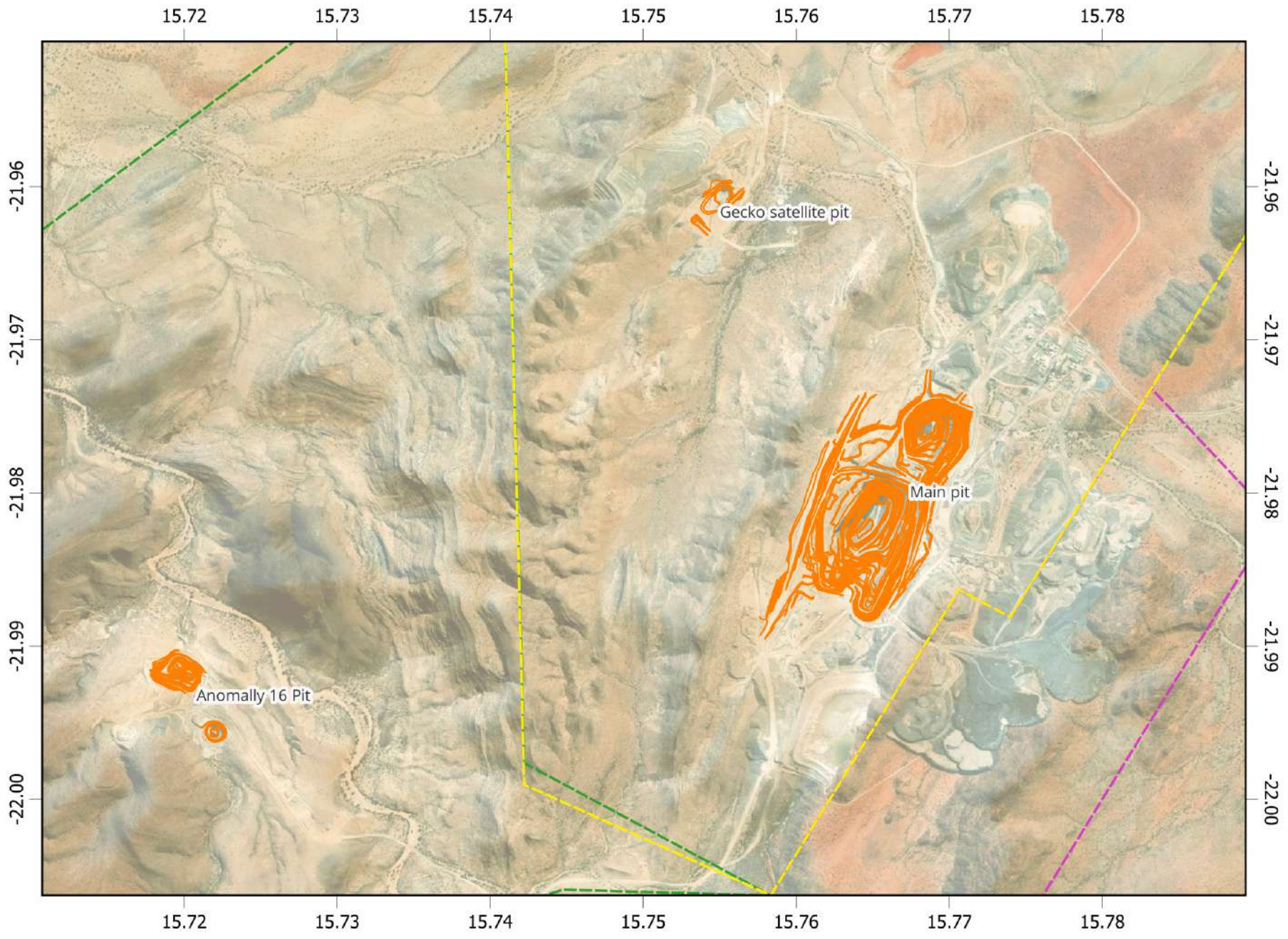


EPSG:4326 WGS 84  
Scale 1:10,000

0 100 200 m

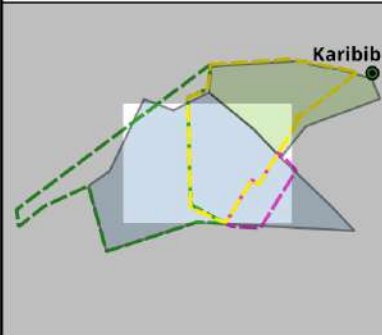


Reference: ECC/107/408  
Cartography: J le Roux 08/2022

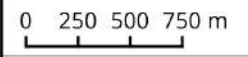


**Legend**

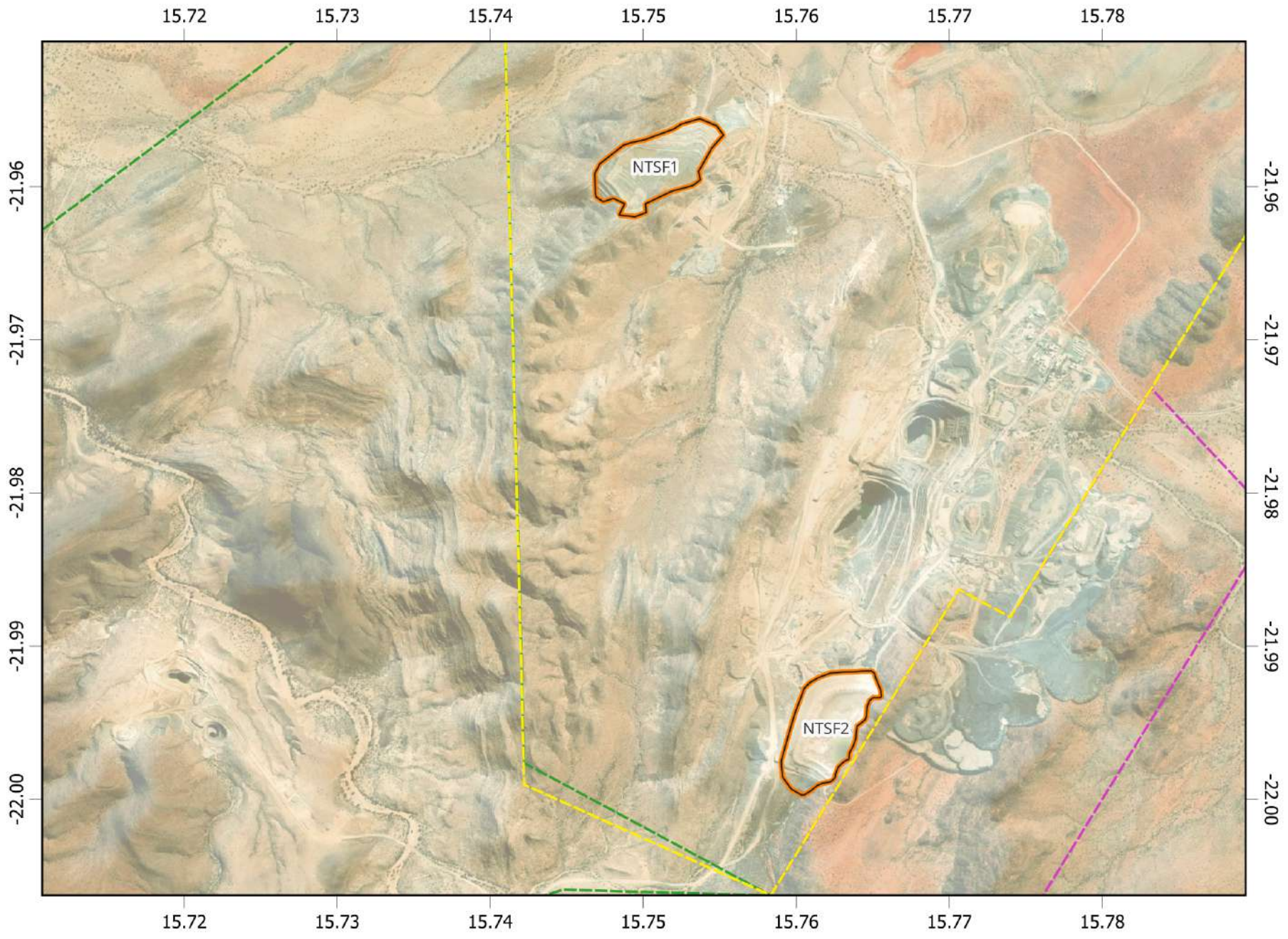
- Towns
- Pits
- ▭ ML 31
- ▭ ML 180
- ▭ Accessory Works Area
- ▭ Farm Karibib
- ▭ Farm Navachab



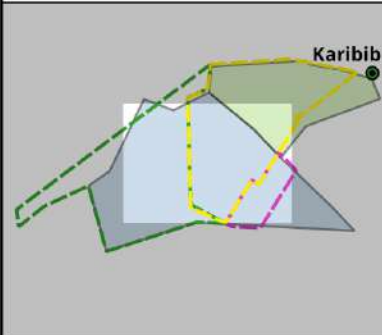
EPSG:4326 WGS 84  
Scale 1:35,000



Reference: ECC/107/408  
Cartography: J le Roux 08/2022

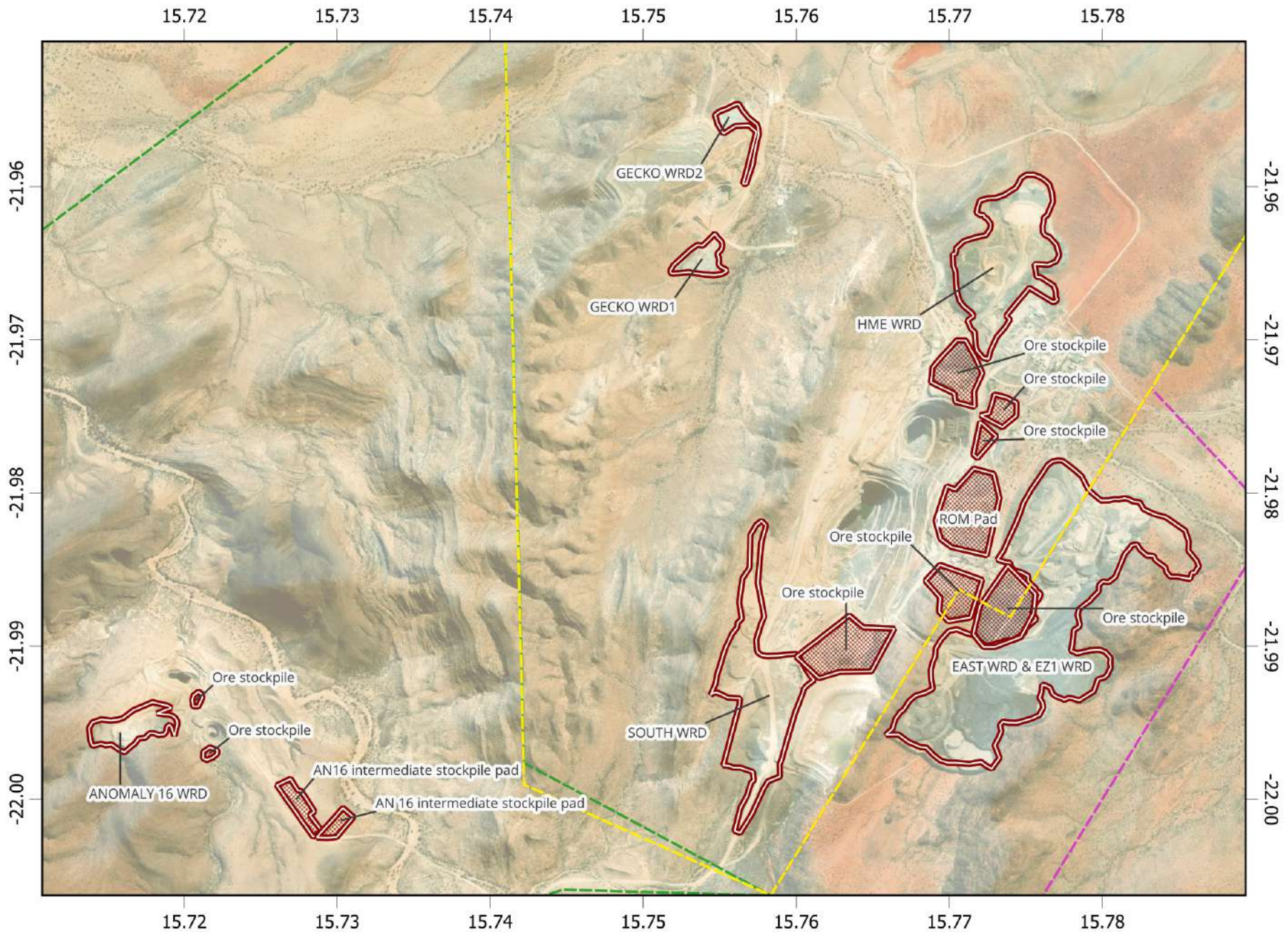


- Legend**
- Towns
  - ▭ ML 31
  - ▭ ML 180
  - ▭ Accessory Works Area
  - ▭ Tailings storage facilities
  - ▭ Farm Karibib
  - ▭ Farm Navachab

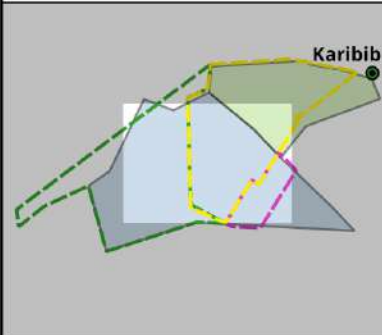


EPSG:4326 WGS 84  
 Scale 1:35,000

Reference: ECC/107/408  
 Cartography: J le Roux 08/2022



- Legend**
- Towns
  - ML 31
  - ML 180
  - Accessory Works Area
  - Farm Karibib
  - Farm Navachab
  - Stockpiles
  - Waste rock dumps



EPSG:4326 WGS 84  
 Scale 1:35,000  
 0 250 500 750 m



Reference: ECC/107/408  
 Cartography: J le Roux 08/2022

15.765

15.770

15.775

15.780

15.785

-21.970

-21.970

-21.975

-21.975

-21.980

-21.980

15.765

15.770

15.775

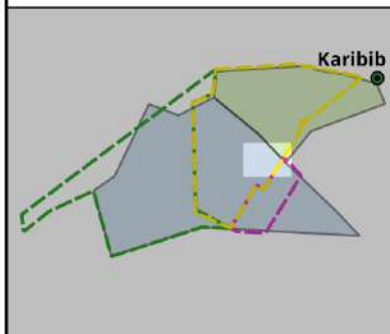
15.780

15.785



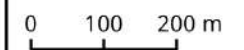
**Legend**

- Towns
- ◆ ROM
- ML 31
- ML 180
- Accessory Works Area
- Farm Karibib
- Farm Navachab
- Processing plant



EPSG:4326 WGS 84

Scale 1:10,000



Reference: ECC/107/408

Cartography: J le Roux 08/2022

15.765

15.770

15.775

15.780

15.785

-21.970

-21.970

-21.975

-21.975

-21.980

-21.980

15.765

15.770

15.775

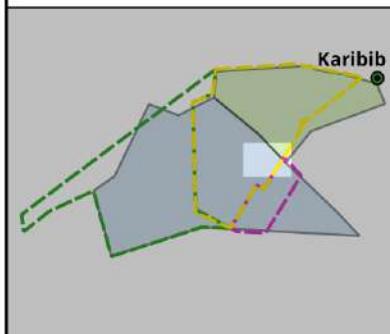
15.780

15.785



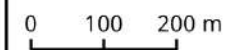
**Legend**

- Towns
- ◆ ROM
- ML 31
- ML 180
- Accessory Works Area
- Farm Karibib
- Farm Navachab
- Processing plant



EPSG:4326 WGS 84

Scale 1:10,000

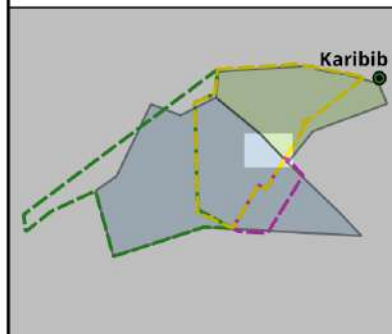


Reference: ECC/107/408

Cartography: J le Roux 08/2022

### Legend

- Towns
- ★ Laydown areas
- ▭ ML 31
- ▭ ML 180
- ▭ Accessory Works Area
- ▭ Farm Karibib
- ▭ Farm Navachab
- ▭ Workshops



EPSG:4326 WGS 84

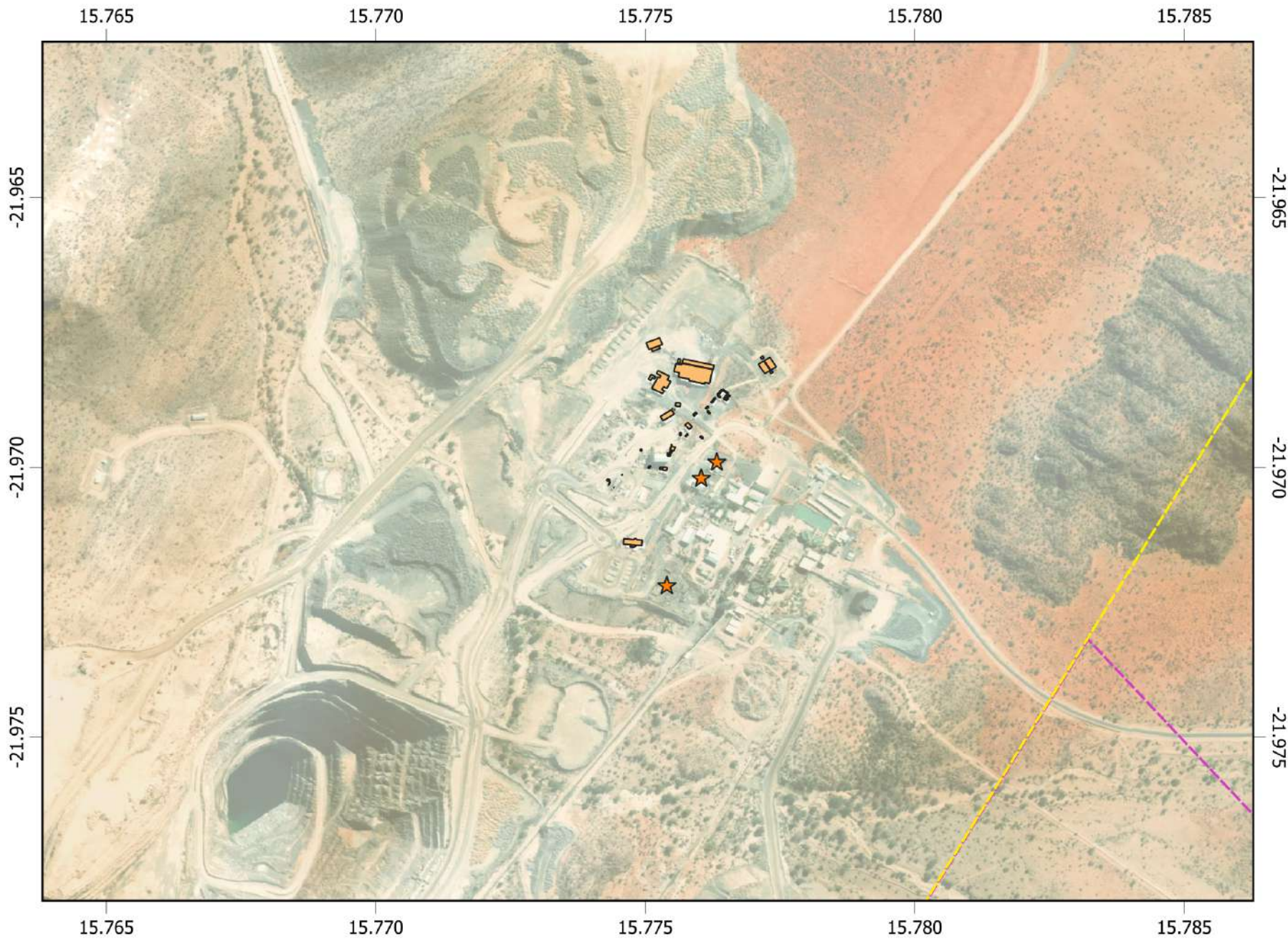
Scale 1:10,000

0 100 200 m



Reference: ECC/107/408

Cartography: J le Roux 08/2022





15.765 15.770 15.775 15.780 15.785

-21.965

-21.970

-21.975



-21.965

-21.970

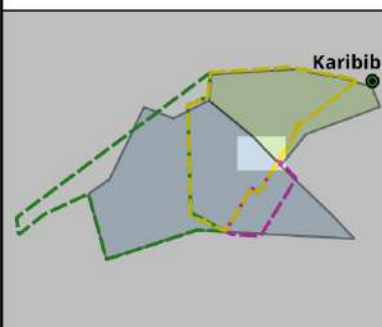
-21.975

15.765 15.770 15.775 15.780 15.785



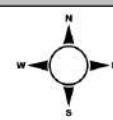
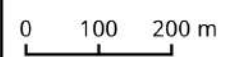
### Legend

- Towns
- ▲ Bioremediation facility
- ML 31
- ML 180
- Accessory Works Area
- Farm Karibib
- Farm Navachab
- Waste cells



EPSG:4326 WGS 84

Scale 1:10,000

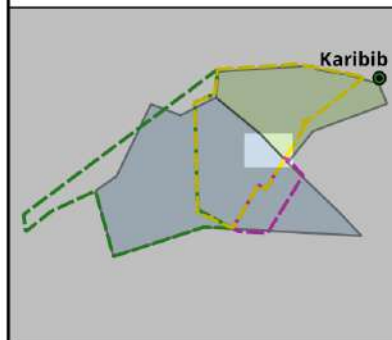


Reference: ECC/107/408

Cartography: J le Roux 08/2022

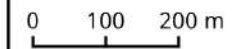
**Legend**

- Towns
- ▭ ML 31
- ▭ ML 180
- ▭ Accessory Works Area
- ▭ Farm Karibib
- ▭ Farm Navachab
- ▭ HME wash bay
- ▭ Bulk diesel storage and depot



EPSG:4326 WGS 84

Scale 1:10,000



Reference: ECC/107/408

Cartography: J le Roux 08/2022

