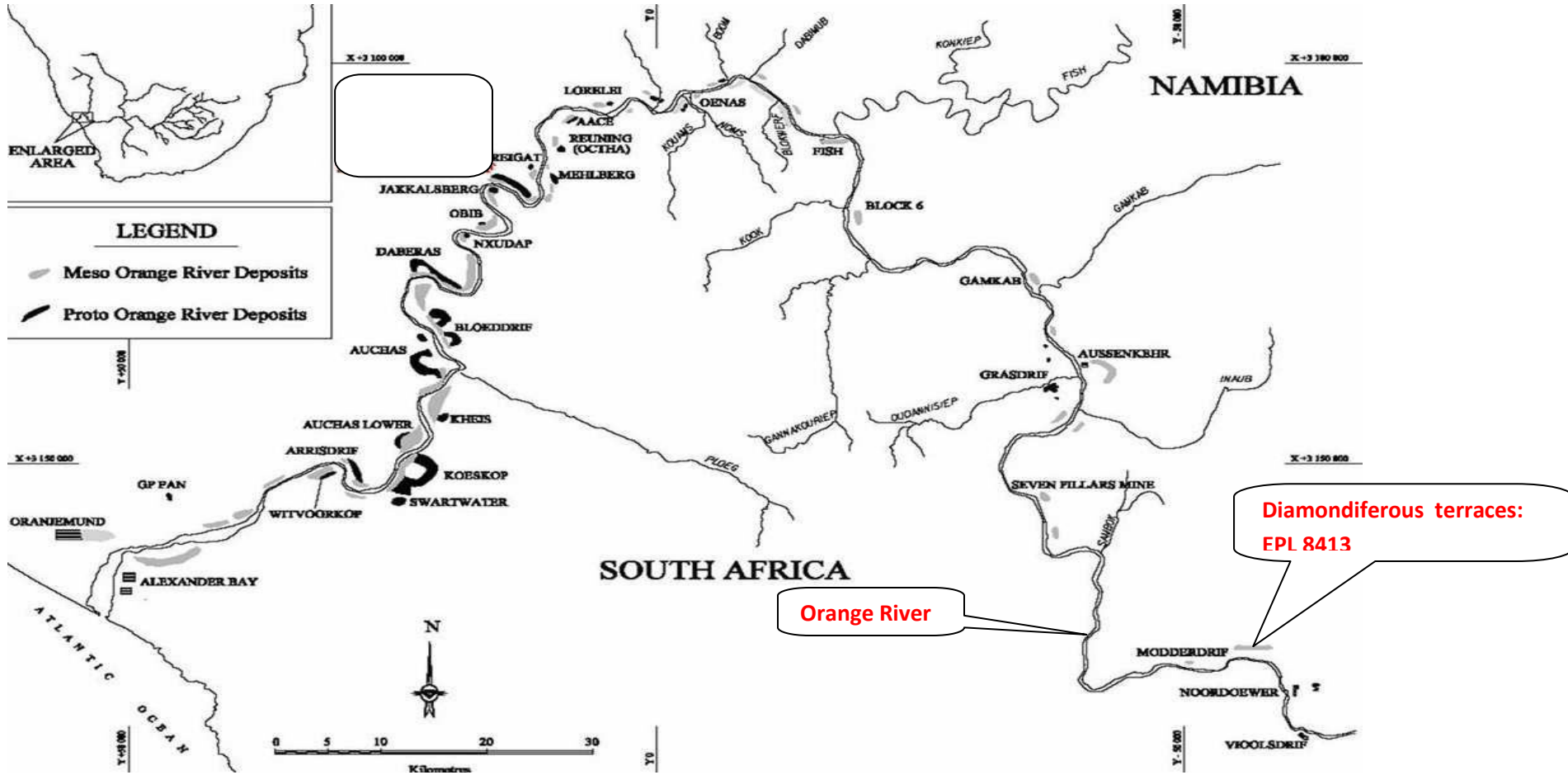


**DIAMOND CONCESSION EPL 8413**

**NOORDOEWER, ORANGE RIVER, NAMIBIA**

14 December 2020



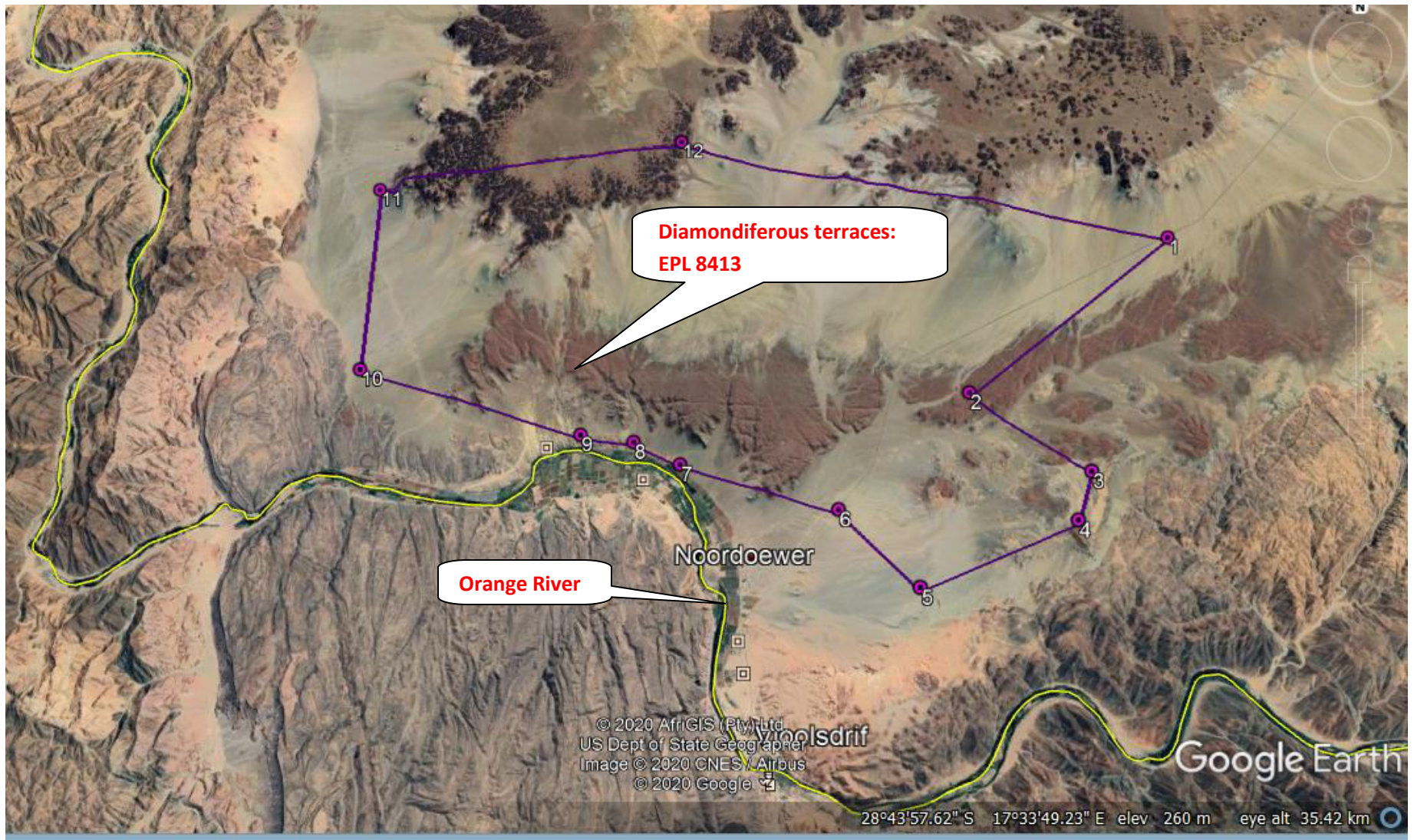


Fig. 1. Diamondiferous terraces within EPL 8413 on the northern bank of the Orange River.





Fig. 2. Location of EPL 8413 in the southern part of Namibia.





Fig. 2. Diamond mining town of Oranjemund is located ~100km directly west of EPL 8413.

## **Notes on the 2 types of diamondiferous terraces, Proto- and Meso-Orange terraces**

Diamonds are trapped in potholes and similar depressions in two suites of gravel terraces that lie on Middle to Late Proterozoic bedrock that was eroded from Late Cretaceous onwards. **The older and higher terrace, about 50m – 70m above current river level, comprises the Arries Drift Gravel Formation; it dates to the early mid-Miocene (19-17 Ma) and is known as the Proto-Orange terrace. The lower terrace, the Meso-Orange terrace about 30m – 40m above current river level, is considered to be Plio-Pleistocene in age (5 – 2 Ma). The Meso-Orange terrace is largely parallel to the current riverbed, while the upper Proto-Orange terrace gravels are exposed on higher banks away from the river.** Diamond grades vary throughout both terrace suites.

*Ma* stands for '*Million years*'.