

Share your news
with Otis Finck
on 081 170 0040



Our coastal community news online 247

Belastingbetalers moet opdok

Verstopte rioolstelsel kos inwoners miljoene

Die rioolnetwerk van die hawestad ondervind alewig probleme weens vreemde voorwerpe wat daarin gestort word.

Walvisbaai

Belastingbetalers moet buitensporige bedrae opdok vir die munisipaliteit om geblokkeerde rioollyne skoon te maak wat gereeld voorkom as gevolg van die storting van verbeete mid-

druk as gevolg van die onaanvaarbare gedrag van sommige inwoners.

DAAGLIKSE GEBEURTENIS

Die munisipaliteit sê hulle moet daaglik vreemde voorwerpe uit die rioolstelsel verwyder, want dit kan tot verstoppings en oorstroomings lei.

Items wat verwyder word, sluit onder meer skaapkoppe, pype, swaar toue, visnette, klere, groot hoeveelhede vet en olie en selfs kampstoele in.

Die munisipaliteit het benadruk dat, in teenstelling met die algemene opvatting dat baie produkte

om rioolvlakke in sowel stroomop- as stroomaf-mangate te monitor.

Die ingenieur van dié departement, Henok Shikongo, verduidelik die munisipale bedryfspan wat aangewys is om blokkasies te hanteer, word streng deur 'n opsporingstelsel gemonitor om hul reaksietyd te bepaal.



Vir blokkasie in 'n enkele huis is

is dit die eienaar se verantwoordelikheid om 'n geregistreerde loodgater te skakel om die blokkasie te verwyder en te spoel. As 'n verstopping meer as twee huise in 'n spesifieke straat raak, moet so 'n geval by die noodlyn (081 128 8324) aangemeld word," het Shikongo gesê.

SKERP TOENAME

Luidens die munisipaliteit het die aantal aangemelde blokkasies en oorstroomings oor drie jaar aansienlik toegeneem. 'n Toename in die aantal plakkershutte dra by tot die rioolprobleem, aangesien die meeste



Sommige van die voorwerpe wat in die munisipale rioolstelsel aangetref word. Foto bygedra



LSHAPES and FACEBOOK ADVERTS

WHAT WILL YOU DO TO GET YOUR BRAND OUT THERE?



PUBLICATION DAYS: MONDAY - FRIDAY @ 12H00

WANT TO ADVERTISE ON

OUR DAILY SHOW @

12H00 ON FACEBOOK?

BOOKED NOW AND LET'S MAKE MAGIC WITH YOUR BRAND!

Engogo 24/7
EASTER FOCUS EDITION
Publication Date: 24 March 2021

Engogo TALK
Booked now to secure your space in our ERONGO HOLIDAY

Engogo 24/7
Republikein
Booked now to secure your space in our ERONGO HOLIDAY

Engogo 24/7
Republikein
Booked now to secure your space in our ERONGO HOLIDAY

CONTACT NICOLEEN GOETZEE
Cell: 081 242 3898
Email: erongogo@erongogo.com

...nie in 2019. Dit sluit die
verwydering van veralop-
plings en instandhouding
van die rioolnetwerk in.
Volgens die munisipali-
teit is daar 'n wanopvat-
ting dat foutiewe pype of
die gebrek aan instand-
houding die oorsaak is
van die herhaalde oor-
stroming van riool.
Die munisipaliteit sê die
stelsel is onder gewelddige
...
...doeken, sanitêre doeken
en papierhanddoeke in
wat nie soos toiletpapier
kan afbreek nie en open-
hoping in die rioolstelsel
kan veroorsaak.
Hulle het verduidelik
personeel van die depar-
tement van water-, afval-
en omgewingsbestuur
hanteer afvalverwante
bedrywighede. Dit sluit in
...
...Wanneer daar geen ri-
oolvoer in die stroomaf-
mangaf opgespoor word
nie, of as 'n beduidende
verandering in die vlakke
waargeneem word, maak
die span die hoofstroom
onmiddellik skoon en
spoel dit sê hy.
"Waar 'n blokkasie tot
'n enkele huis beperk is,
...
...en aarding van vreemde
voorwerpe in die man-
gate op erwe voorkom,
aangesien daar beperkte
toegang tot behoorlike
afsluitergewe op hierdie
personeel is."

**PUBLIC NOTICE:
ENVIRONMENTAL CLEARANCE CERTIFICATE APPLICATION**

**CONSTRUCTION OF A SEWERAGE PUMP STATION AND RISING MAIN
IN KUISEBMOND, WALVIS BAY**

In terms of the Environmental Management Act (Act no. 7 of 2007) as well as the Environmental Impact Assessment Regulations (Government Notice No.30 of 2012), notice is hereby given to all potential interested and affected parties that an application for Environmental Clearance Certificates will made to the Office of The Environmental Commissioner for the following activity:

Project Description: Environmental Impact Assessment for the construction of a sewerage pump station and rising main in Kuisebmond, Walvis Bay

Project Location: Kuisebmond Pump Station, Walvis Bay

Proponent: Municipality of Walvis Bay

Environmental Assessment Practitioner: Om'kumoh Consulting Engineers

All interested and affected parties are hereby invited to register with Om'kumoh Consulting Engineers. Background information can be requested, and any comments, issues or concerns related to the project can be submitted to Om'kumoh Consulting Engineers. All comments/concerns must reach Om'kumoh Consulting Engineers by close of business on 7 April 2021.

For further information regarding the project and/or to register as an interested and affected party, please contact Faye Brinkman, Om'kumoh Consulting Engineers Tel: 081 3320920, Email: brinkman.faye@gmail.com



ANDER REDES
Behalwe dat lede van die gemeenskap vreed-
de voorwerpe stort, is
daar glo ook onwettige
verbindings met die ri-
oolstelsel.
Oorspronklike mangat-
deksels word na bewering
verwyder en vervang deur
tydelike toiletpotte wat
maklike toegang tot die
mangate bied vir daag-
likse storting of gebruik.
Volgens die munisipali-
teit verbind inwoners
ook hul afvoerpylyne vir
residuele riool direk met
die hoofrioollyn om afval
in die stelsel te stort en dit
veroorzaak vertraginge,
omdat die munisipale
span alle rommel in die
spesifieke mangat moet
opruim om onbelem-
merde vloei te verseker.
Inwoners wat hulle hi-
eraan skuldig maak, word
beboet en beveil om hul
pype te verwyder, sê die
munisipaliteit.
Sommige gemeenskaps-
lede wat mangate op hul
perseel het, maak glo ook
soms mangatdeksels oop
en stort vreemde voor-
werpe direk daarin.
Mangatdeksels word na
bewering ook gesteel, wat
die mangate oop laat. Om
die probleem te takel, is
die munisipaliteit besig
om bestaande mangat-
deksels met sluitbare
alternatiewe te vervang.

Sowat 5 000 mense "groet" ds Manus Olivier tydens aanlyn roudiens

Sowat 5 000 mense het Saterdag van regoor Namibië, en ook uit die buiteland, ingeskakel op die aanlyn roudiens van wyle dominee Manus Olivier. Ds Olivier is op 7 Maart na 'n jarelange kankerstryd op Swakopmund oorlede.

Sy eggenoot, den Heever het die roudiens gelei. Die diens is deur Kanaal 7 herlei en deur middel van Facebook en Youtube kon duisende mense toegang daartoe verkry. Ds Christo van

op Swakopmund: hy was onder andere betrokke by die destydse stigting en oprigting van die Pro-Ed Akademie Pri-vaatskool, die stigting van die Swakop River Community Church (vandag bekend as Shofar Christian Church), hy was vir baie jare die voorsitter van Erongo House of

Safety en het aan verskeie ander projekte deelgeneem om homself te bewys vir die werwing van siele vir Christus.

Vir hom was dit 'n roeping om mense in nood by te staan. Juis daarom was hy altyd betrokke by haweloses en ander vorme van kwesbare mense.

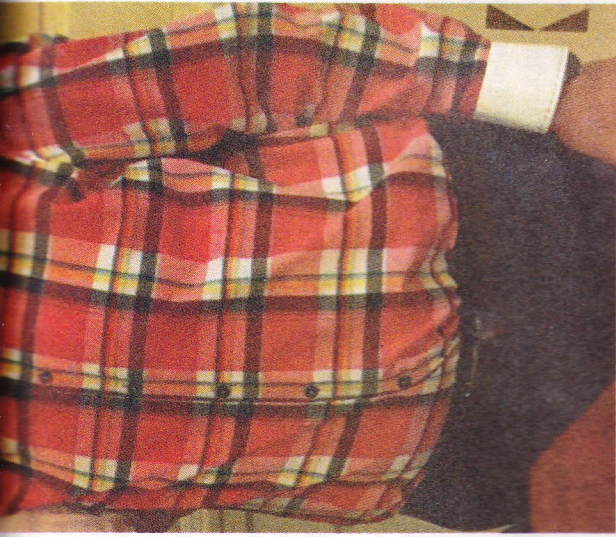


Happy Indenendence

duidelik die rou-
diens is vanuit die
NG Kerk op Swa-
kopmund gehou.
Ds Christo van
middel van Face-
book en Youtube
kon duisende mense
toegang daartoe
verkry.

Church (vandag be-
kend as Shofar
Christian Church),
hy was vir baie jare
die voorsitter van
Erongo House of

in nood by te staan.
Juis daarom was hy
altdy betrokke by
haweloses en ander
vorme van kwes-
bare mense.



Happy Independence Namibia

Namibia lives in all of us. A Happy Independence to the people of Namibia.

PUBLIC NOTICE: ENVIRONMENTAL CLEARANCE CERTIFICATE APPLICATION AND RISING MAIN IN KUISEBMOND, WALVIS BAY

In terms of the Environmental Management Act (Act no. 7 of 2007) as well as the Environmental Impact Assessment Regulations (Government Notice No.30 of 2012), notice is hereby given to all potential interested and affected parties that an application for Environmental Clearance Certificates will be made to the Office of The Environmental Commissioner for the following activity:

Project Description: Environmental Impact Assessment for the construction of a sewerage pump station and rising main in Kuisebmond, Walvis Bay

Project Location: Kuisebmond Pump Station, Walvis Bay

Proponent: Municipality of Walvis Bay

Environmental Assessment Practitioner: Om'kumoh Consulting Engineers

All interested and affected parties are hereby invited to register with Om'kumoh Consulting Engineers. Background information can be requested and any comments, issues or concerns related to the project can be submitted to Om'kumoh Consulting Engineers. All comments/concerns must reach Om'kumoh Consulting Engineers by close of business on 7 April 2021.

For further information regarding the project and/or to register as an interested and affected party, please contact:

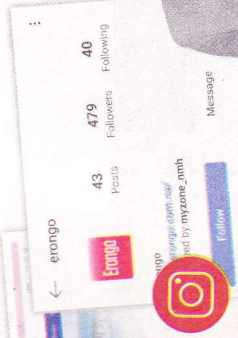
Faye Brinkman,

Om'kumoh Consulting Engineers

Tel: 081 3320920 Email: brinkman.faye@gmail.com



**EAR-NOSE AND THROAT
SPECIALIST at the Coast**



Share your news with Otis Finck on 081 170 0040



Our coastal community news online 247

Narraville Shack Dwellers maak goeie vordering

Stadig maar seker

Ná meer as 14 jaar sien 'n groep lae-inkomsteverdieners daarna uit om met die werklike bou-proses van hul huise te begin.



Lede van die Namibian Shack Dwellers Federation (NSDF) het onlangs 'n opruimings-veldtog van stapel gestuur op die terrein waar hulle beoog om 68 huise in Narraville te bou.

groep, mnr. Francisco Maree. Die groep het ook 'n vloeroppervlak aangelé met die doel om 'n masjien daarop te monteer wat bakstene vervaardig. Die masjien is deur die Turke ambassade geskenk en is deur wyle goewerneur Cleophas Mutjavikua oorhandig. "Ons het die masjien uit die houer gehaal waarin dit geborg was en 'n proef-lopie metbaksteenmakery gedoen. Die komponente van die masjien is geweldig swaar en daarom het ons besluit om dit op 'n vloeroppervlak te plaas."



Lede van die Namibian Shack Dwellers Federation (NSDF) in Narraville met hul onlangse opruimings-veldtog op die terrein waar hulle beoog om 68 huise te bou. Foto Otis Finck

Sodra ons begin om bakstene teen volle tempo te vervaardig, sal die beskik-

voltooi sou gewees het. "Die stootskraeper en die padskraeper het gebreek.

ongeveer 24 000 hektaar onbediende grond geteken toe hulle in 2009 aansoek

Die pad vorentoe Volgens Maree sal dit ongeveer 'n maand lank

watmeters." Maree het geëis 'n opname het onlangs lank

VACANCIES & NOTICES



The Swakopmund Lions Frail Care Centre is seeking an experienced registered Sister/Staff Nurse for a full-time position.

Essential Criteria:

- Namibian citizen
- Current registration with the HPCNA (Health Professions Council of Namibia)
- An understanding and knowledge of Alzheimer Disease and Dementia
- Relevant frail care experience
- Knowledge of the German language will be an added advantage
- We offer flexible shift hours, a market related salary and a pension fund

If you fit the above criteria, then we want to hear from you. Please send your letter and CV to cahlions@lwayv.na or contact the manager at (064) 427 000.

Closing date: 15 April 2021

PUBLIC NOTICE: ENVIRONMENTAL CLEARANCE CERTIFICATE APPLICATION CONSTRUCTION OF A SEWERAGE PUMP STATION AND RISING MAIN IN KUISEBMOND, WALVIS BAY

In terms of the Environmental Management Act (Act no. 7 of 2007) as well as the Environmental Impact Assessment Regulations (Government Notice No.30 of 2012), notice is hereby given to all potential interested and affected parties that an application for Environmental Clearance Certificates will be made to the Office of The Environmental Commissioner for the following activity:

Project Description: Environmental Impact Assessment for the construction of a sewerage pump station and rising main in Kuisebmond, Walvis Bay
Project Location: Kuisebmond Pump Station, Walvis Bay
Proponent: Municipality of Walvis Bay
Environmental Assessment Practitioner: Om'kumoh Consulting Engineers

All interested and affected parties are hereby invited to register with Om'kumoh Consulting Engineers. Background information can be requested and any comments, issues or concerns related to the project can be submitted to Om'kumoh Consulting Engineers. All comments/concerns must reach Om'kumoh Consulting Engineers by close of business on **7 April 2021**.

For further information regarding the project and/or to register as an interested and affected party, please contact:

Faye Brinkman,
 Om'kumoh Consulting Engineers
 Tel: 081 3320920 Email: brinkman.faye@gmail.com

NOTICE OF THE CONSENT APPLICATION IN TERMS OF THE WALVIS BAY TOWN PLANNING SCHEME

CONSENT: Day-Care ON ERF/ERVEN/

NOTICE OF THE CONSENT APPLICATION IN TERMS OF THE WALVIS BAY TOWN PLANNING SCHEME

CONSENT: Beauty Salon ON ERF/ERVEN/

NOTICE OF THE CONSENT APPLICATION IN TERMS OF THE WALVIS BAY TOWN PLANNING SCHEME

CONSENT: Self Catering Units ON ERF/ ERVEN/PORTION/FARM NO: 436 TOWN-SHIP/SUBURB: Langstrand STREET NAME & NO: Kuiseb Street.

In terms of the Walvis Bay Town Planning Scheme, notice is hereby given that I/we, the undersigned, have applied to the Municipality of Walvis Bay for permission to erect/establish on the site a/an: Self Catering Unit.

Plans may be inspected or particulars of this application may be obtained at Town Planning, First Floor, Rooms 101 & 105, Civic Centre.

Any person having any objection to the approval of this application, must lodge such objection, together with the grounds thereof, with the General Manager: Roads and Building Control (Town Planning), Private Bag 5017, Walvis Bay, and the applicant, in writing, not later than **16 April 2021**.

NAME AND ADDRESS OF APPLICANT: F Louw, P O Box 30145, Pionierspark, Windhoek email: pikkieparadys.florene@gmail.com



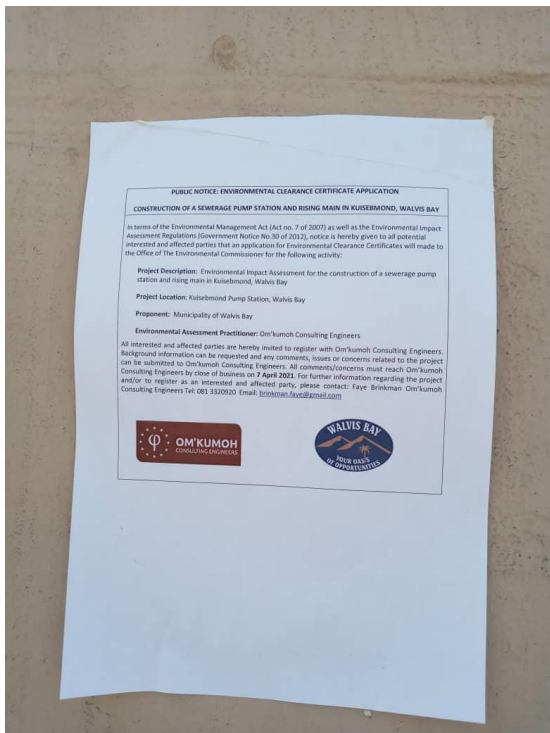
Erongo Regional Electricity Distributor (PTY) Ltd, commonly known as Erongo RED is mandated to distribute and supply electricity in Erongo region. We are proud to announce that Erongo RED is an equal opportunity employer. Qualified applicants from designated groups as defined in the Affirmative Action (Employment) Act, 1998 (Act 29 of 1998) are encouraged to apply. Preference will be given to women and persons with disability.

RE-ADVERTISEMENT - EXTERNAL VACANCY

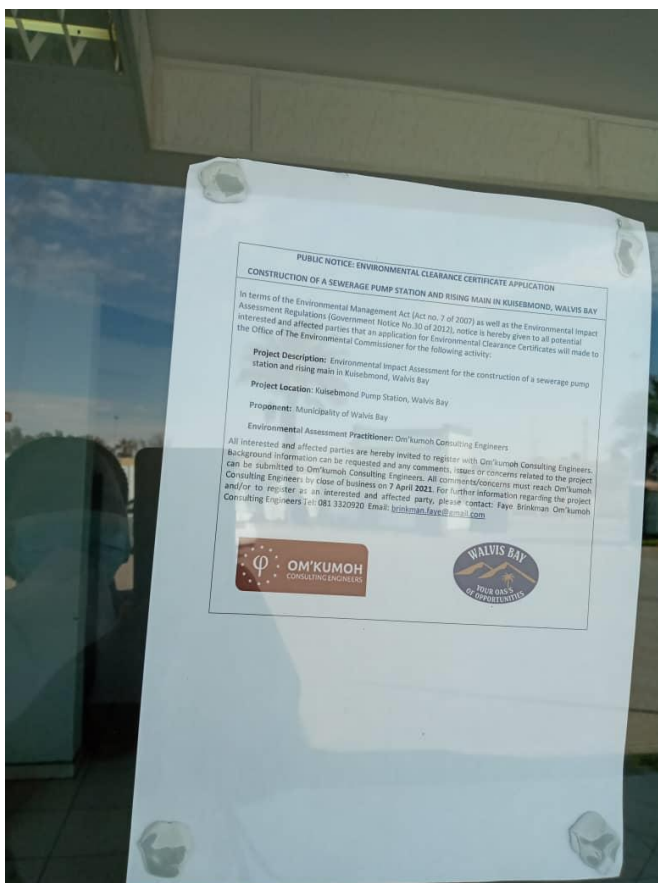
Position:

Superintendent: Project Management

Appendix B: Proof of public notices



Site Notice at the Existing Kuisebmond Sewage Pump Station



Public notice at the National Housing Enterprises (NHE) premises