

PRELIMINARY SITE MAP (S 190 25' 20.9";E 150 09' 53.3")

Project Location in Namibia

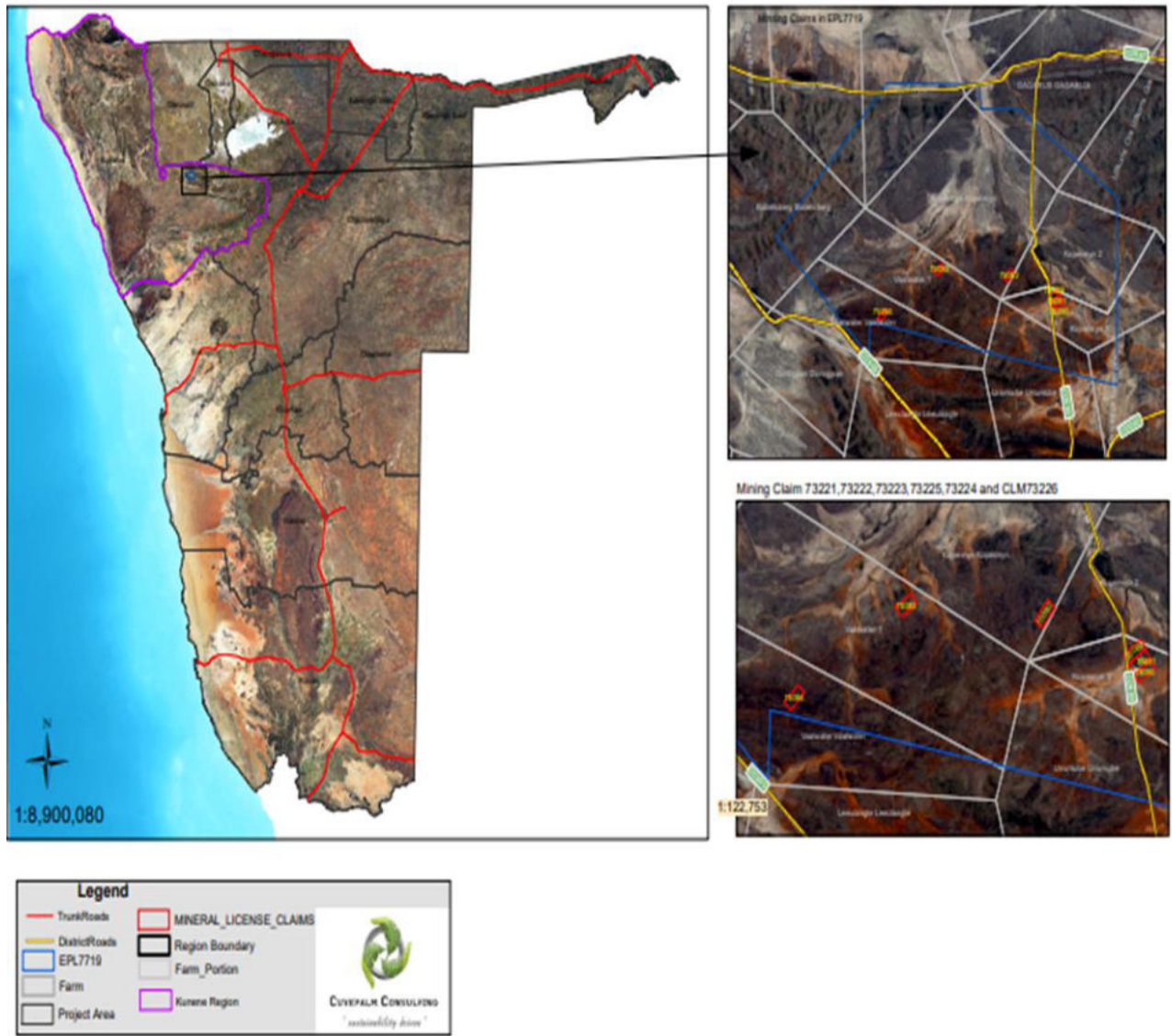


Figure 1 Project location (Coordinates (S 190 25' 20.9";E 150 09' 53.3"))

PRELIMINARY SITE MAP (S 190 25' 20.9";E 150 09' 53.3")

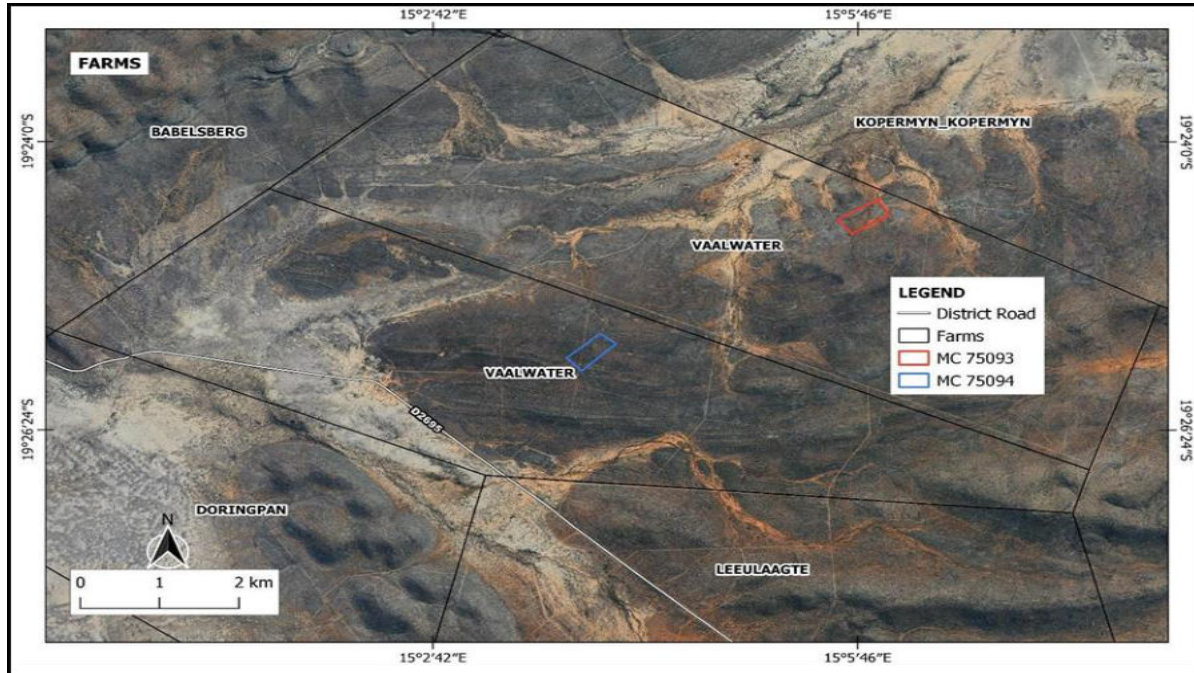


Figure 2 Location of MC s75093 -75094((S 190 25' 20.9";E 150 09' 53.3")

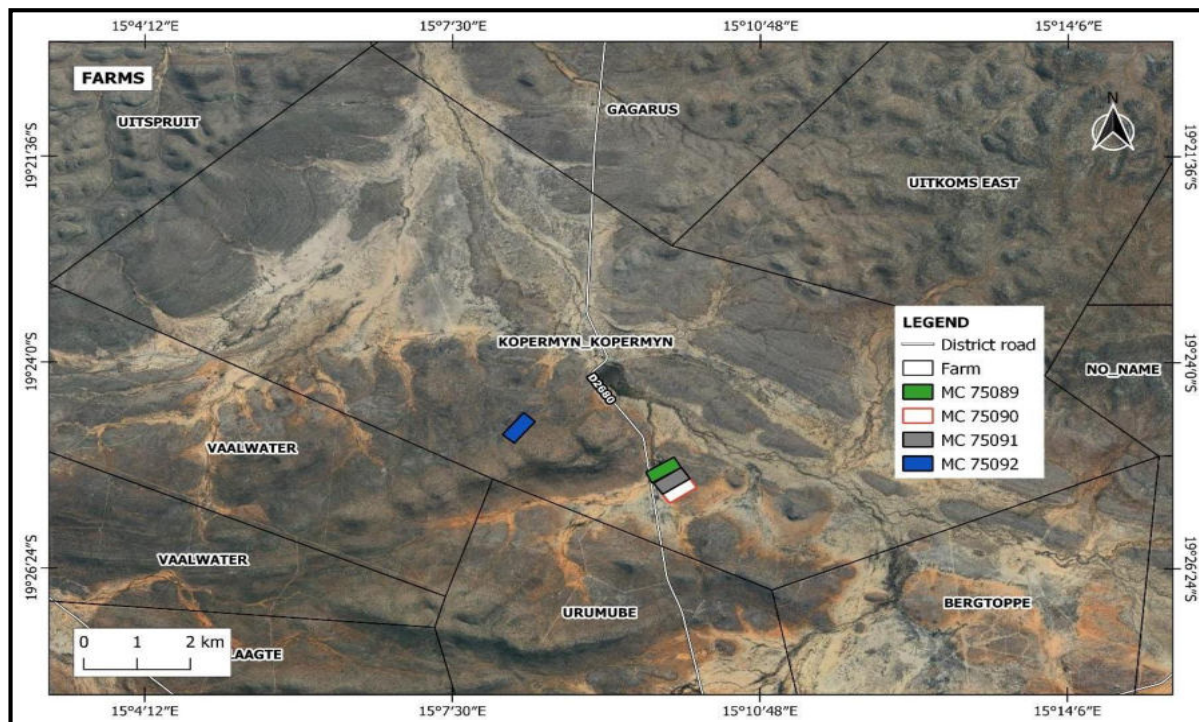


Figure 3 Locality of MCs 75089-75092 (Source: R.Mushi)

PRELIMINARY SITE MAP (S 190 25' 20.9";E 150 09' 53.3")