

Figure 4: Locality map of the proposed exploration activity's site or area in the Erongo Regions

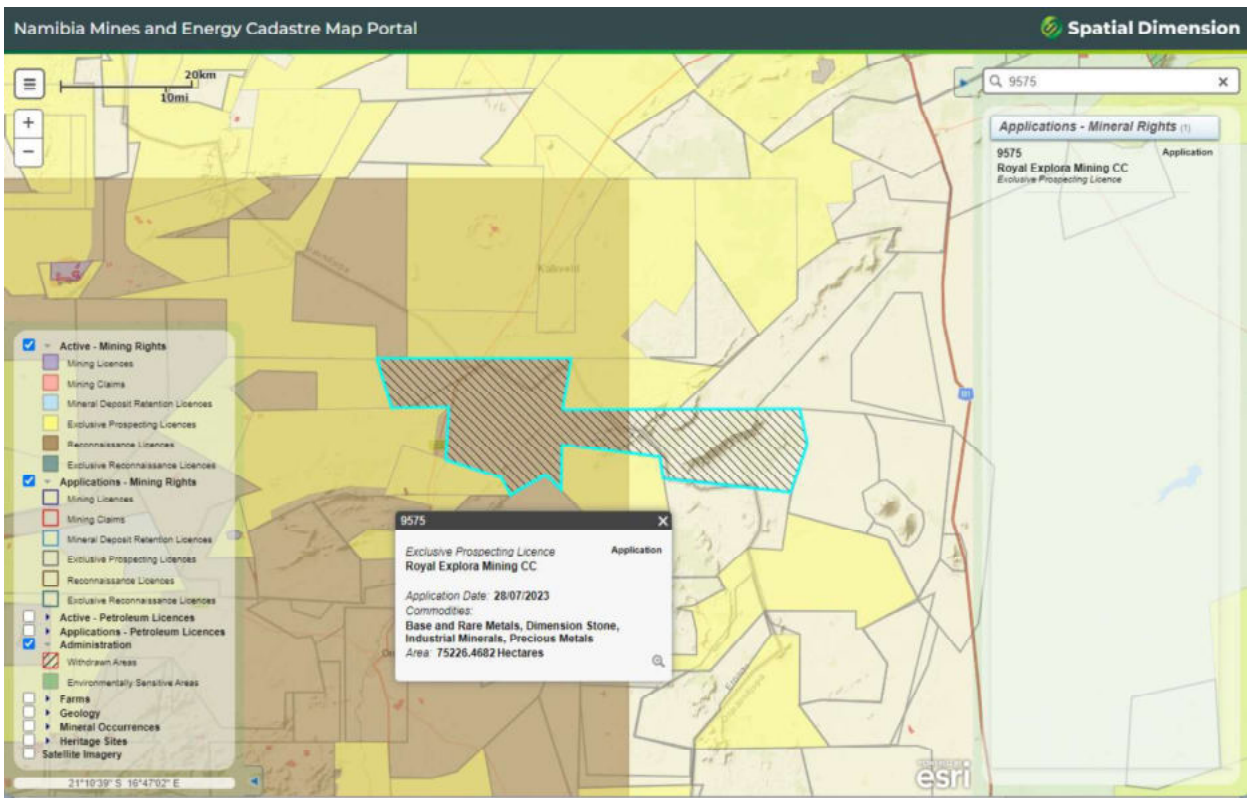


Figure 3: Evidence of the proposed EPL application on the Ministry of Mine's cadastre (MME, 2023)

**Table 3: Corner coordinates of the proposed development site**

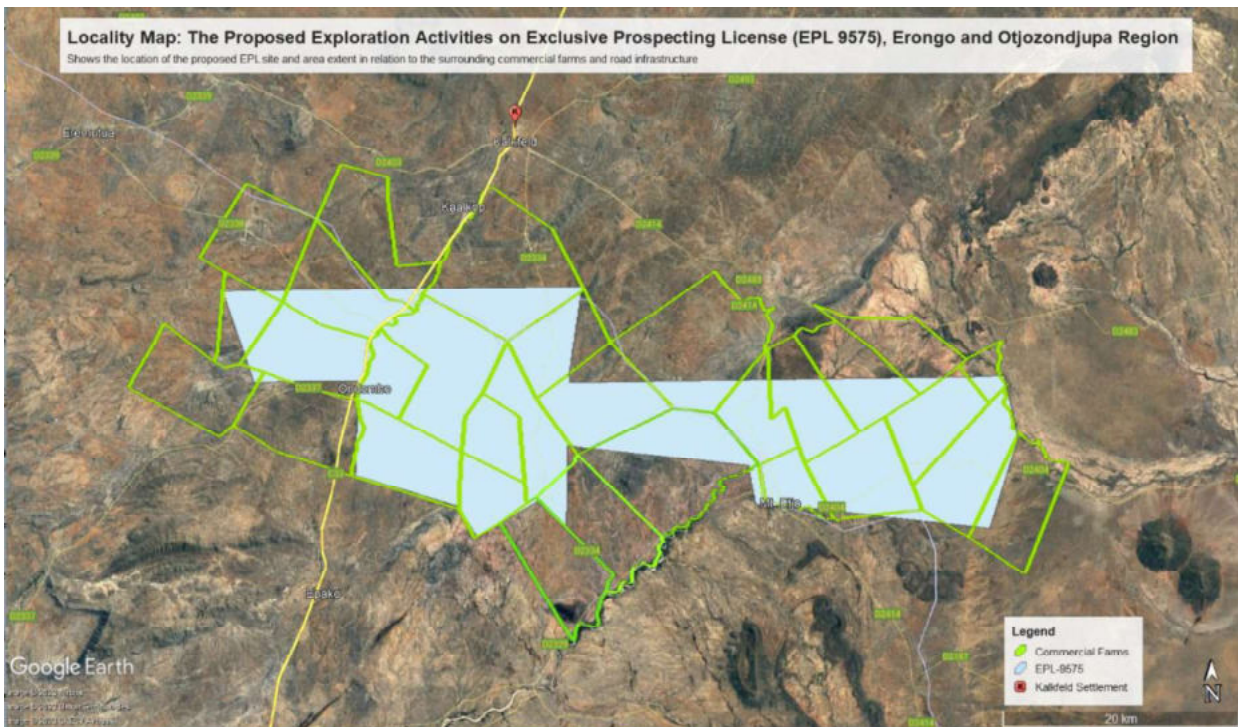
Corner point	Latitude	Longitude
A – EPL 9575 Point 1	-21.001117°	16.243212°
B – EPL 9575 Point 2	-21.074306°	16.231494°
C – EPL 9575 Point 3	-21.001107°	16.129834°
D – EPL 9575 Point 4	-21.040857°	16.202389°
E – EPL 9575 Point 5	-21.106201°	16.161452°
F – EPL 9575 Point 6	-21.187467°	16.156962°
G – EPL 9575 Point 7	-21.182296°	16.227273°
H – EPL 9575 Point 8	-21.121479°	16.230472°
I – EPL 9575 Point 9	-21.168894°	16.381341°
J – EPL 9575 Point 10	-21.188837°	16.570365°
K – EPL 9575 Point 11	-21.120921°	16.594736°
L – EPL 9575 Point 12	-21.074252°	16.583405°

## 2.4. SUPPORTING INFRASTRUCTURE

### 2.4.1 Basecamp

Given the location of the EPL and that it is situated in an area predominantly surrounded with commercial farmlands (**Figure 4**) and where tourism activity only occur to a limited degree, base-camp is necessary. Therefore, any suitable site for lodging purpose or for base-camp must be identified in collaboration and or with consent of the property owner and all other relevant authorities including the local and competent authorities.

Where practical and possible, it is strictly recommended that for unskilled labour, local community members are employed and thus accommodated at their existing homestead to mitigate and reduce potential conflict with the farmer’s wildlife and livestock management protocols.



**Figure 4: Land-use map of the proposed exploration activity’s site or area in the Erongo Regions**

**Table 4:** List of Former Commercial farms included within the boundaries of EPLs

No.	Farm Name	No.	Farm Name
1	Farm Klein Okosombuka No. 56	16	Farm Etjo Nord No. 93
2	Farm Okaturua No. 57	17	Farm Etjo Sued No. 97
3	Farm Vastrap No. 174	18	Farm Omungonde No. 96
4	Farm Okozongutu West No. 100	19	Farm Rhenosterkloof No. 96/1
5	Farm Ongangasemba No. 99	20	Farm Otjihaenamaparero No. 92/REM
6	Farm Omaha No. 98	21	Farm Omatarassu No. 53
7	Farm Bambi No. 98/1	22	Farm Ombona No. 89
8	Farm Schoner-Brunnen West No. 501	23	Farm Oseraomewa No. 54
9	Farm Haidehof No. 52	24	Farm Georg-Ferdinnadshohe No. 512
10	Farm Eheratengua Ost No. 48	25	Farm FMC No. 94/1
11	Farm Eheratengua No. 49/REM	26	Farm Ondombo-Wes No.210
12	Farm Groot Omawe No. 190	27	Farm Weisenfels No. 35
13	Farm Klein Okatuwapa No. 36	28	Farm Wilhelm-Alberchstal No. 84
14	Farm Okosongoro Sud No. 45	29	Farm Okamborombonga No. 30/REM
15	Farm Okosongoro Nord No. 209	30	Farm Otjeriwanga No. 33

During the prospecting period, it is anticipated that about 10 – 15 persons will be employed, although only four staff are allowed to lodge on-site on an alternating (rotating) basis. The project specialists such as geologists, field assistants, geo-technicians and sampling crew, will be hosted on either a daily or special visit basis, and thus might not all be on-site simultaneously.

Therefore, it is highly recommended that temporary ablution facilities must be provided and limited to within the existing base-camp footprint pre-identified national park campsites, and the necessary authorization must be obtained prior to installation of any such facility.

In terms of waste generation and management, the predominant type of waste that will be generated during the exploration activities, in small volumes, is domestic waste i.e. packaging material (paper, wooden box, plastic sampling bags), and potentially hydrocarbons from diesel oil should a power generator needed. Domestic waste must be stored in heavy duty garbage bags and disposed of correctly at the Omaruru or Karibib waste disposal site.

#### 2.4.2 Water supply

Water will be required for diamond-core drilling and for dust suppression. Water can be supplied through existing farm boreholes (with the permission of the land owners) and or if necessary new boreholes shall be developed explicitly for the exploration activities by Royal Exploration Mining cc s Investment cc in which case a permits must be obtained.

#### 2.4.3 Power supply

In respect to domestic power needs, the recommended lodging site is already connected to the national power grid thus the energy requirements addressed adequately. However, the various machinery and equipment required for exploration e.g. vehicles are self-powered by means petrol / diesel engines and or generators, hence there is need for on-site fuel in either small mobile bowser or barrel drums on a concrete slab at the base-camp. The drill rigs will either be refuelled with Jerry cans or directly from the bowser.

#### 2.4.4 Access roads / tracks

EPL 9575 is accessible is accessible directly via the D2328 gravel road in the eastern direction from the town. As far as is practicable, all site particularly the base-camp and drill sites shall be accessed through existing tracks, therefore no new roads or tracks will be created. Additionally, it is highly