

<p>Project Name:</p>	<p>BACKGROUND INFORMATION DOCUMENT FOR THE CREATION OF A ROAD AND FUEL STORAGE AND HANDLING FACILITIES ON ERF 1876, LÜDERITZ, IKKARAS REGION</p>
<p>The Proponent:</p>	<div data-bbox="762 667 1251 763" data-label="Image"> </div> <p>Bachmus Oil & Fuel Supplies (Pty) Ltd PO Box 2788 Walvis Bay</p>
<p>Prepared by:</p>	<div data-bbox="557 1061 1445 1296" data-label="Image"> </div> <p>1st floor Bridgeview Offices & Apartments, No. 4 Dr Kwame Nkrumah Avenue, Klein Windhoek, Namibia PO Box 6871, Ausspanplatz, Windhoek</p>
<p>Release Date:</p>	<p>October 2023</p>
<p>Consultant:</p>	<p>C. Du Toit C. Van Der Walt Cell: 081 127 3145 Email: charlie@greenearthnamibia.com</p>

Table of Contents

1.	Introduction	3
2.	Background Information on Project	3
2.1	Site details	3
3.	Supporting Bulk Services and Infrastructure Provision.....	7
3.1.	Access.....	7
3.2.	Water supply / requirements.....	7
3.3.	Electricity	7
3.4.	Sewage disposal	7
3.5.	Storm water and drainage	7
3.6.	Solid waste	7
3.7.	Fire protection	7
4.	Listed activities triggered by the proposed project	7
5.	Approach to the Environmental Assessment of the Project.....	8
5.1.	Aims of the Assessment Process	8
5.2.	Methodology.....	8
6.	Expected Impacts on receiving environment	9
7.	Public Involvement Program	9

List of Figures

<i>Figure 1: Locality Plan of Erf 1876, Luderitz.....</i>	<i>4</i>
<i>Figure 2: Locality Plan of Erf 1876, Luderitz with Photo.....</i>	<i>5</i>
<i>Figure 3: Photo showing the vegetation on the site</i>	<i>6</i>
<i>Figure 4: Site Layout Plan showing the proposed new access road.....</i>	<i>6</i>

THE FOLLOWING IS A BACKGROUND INFORMATION DOCUMENT FOR THE ENVIRONMENTAL IMPACT ASSESSMENT AND ENVIRONMENTAL MANAGEMENT PLAN TO OBTAIN AN ENVIRONMENTAL CLEARANCE FOR THE CREATION OF A ROAD AND FUEL STORAGE AND HANDLING FACILITIES ON ERF 1876, LÜDERITZ, IIKARAS REGION

1. Introduction

Green Earth Environmental Consultants have been appointed by Bachmus Oil & Fuel Supplies (Pty) Ltd to attend to and complete an Environmental Impact Assessment (EIA) and Environmental Management Plan (EMP) in order to obtain an Environmental Clearance Certificate to create an access road to Erf 1876 and for fuel storage and handling facilities on Erf 1876, Lüderitz, Benguela Extension 3, IIKaras Region as per the requirements of the Environmental Management Act (No. 7 of 2007) and the Environmental Impact Assessment Regulations (GN 30 in GG 4878 of 6 February 2012).

The Background Information Document (BID) serves to convey information regarding the proposed project to Interested and Affected Parties (I&APs) to allow them the opportunity to comment on the proposed project.

This document contains the following information:

- A brief background on the proposed project.
- The approach to the environmental assessment process.
- Environmental and planning issues identified.
- How to become involved.

2. Background Information on Project

2.1 Site details

Erf 1876, Lüderitz, Benguela Extension 3, IIKaras Region is located north of the B4 Trunk Road leading into the Town of Lüderitz and is zoned "general industrial". The Erf is 6550m² in extent. It is accessed from a cul-de-sac located east of the Erf. The erf is currently vacant and undeveloped. The erf will be used for wholesale fuel storage and handling, warehousing, customer own collection points and sales. There will be 2 X 85 000 litre horizontal above ground storage tanks with supporting infrastructure including dispensing points, parking areas for vehicles, offices, storage areas for batteries and lubricants, a tuck shop, offices, and ablution facilities. The storage and handling of dangerous goods will include diesel, oil, truck batteries and lubricants. The proponent also intends to create an additional access road over Erf 2050 along the southern boundaries of Erven 1871, 1872, 1873, 1874, and 1875 to improve the circulation of vehicles to and from the site. See below *Plans* showing the locality of Erf 1876, Luderitz:

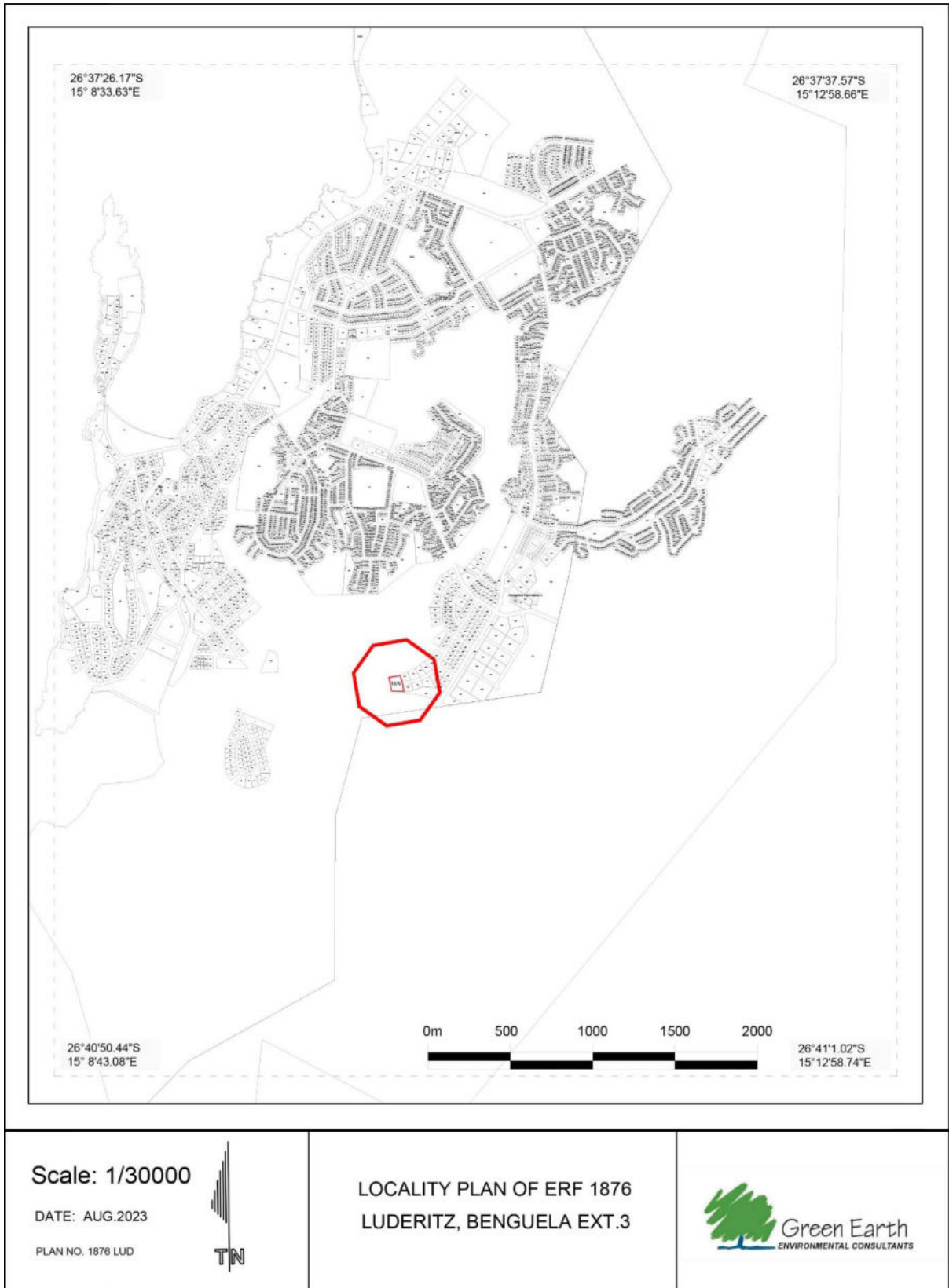


Figure 1: Locality Plan of Erf 1876, Luderitz



Figure 2: Locality Plan of Erf 1876, Luderitz with Photo



Figure 3: Photo showing the vegetation on the site

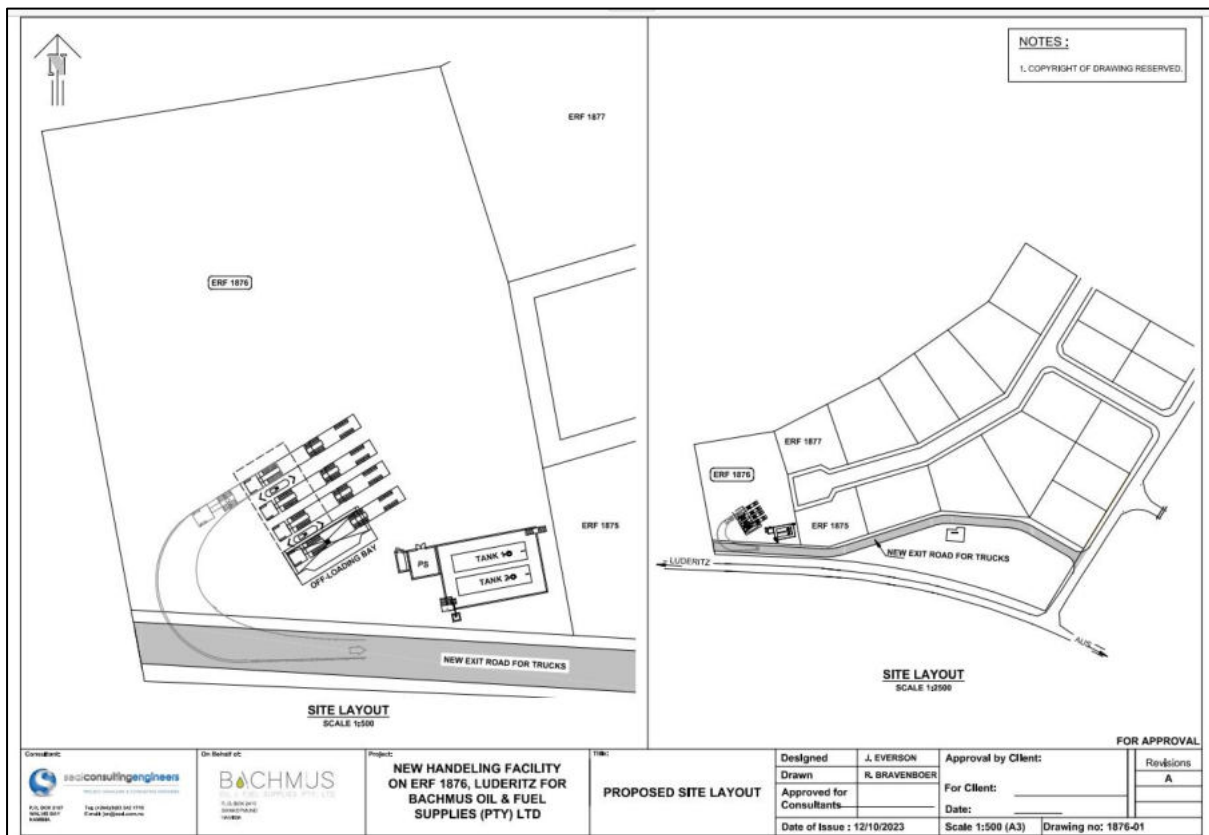


Figure 4: Site Layout Plan showing the proposed new access road

3. Supporting Bulk Services and Infrastructure Provision

The following bulk services are already present on the site:

3.1. Access

Erf 1876, Luderitz, Benguela Extension 3 is located next to the B4 road leading into the Town of Luderitz but will obtain access from internal streets that will be created.

3.2. Water supply / requirements

Water to the Erf will be obtained from the Lüderitz water reticulation network.

3.3. Electricity

Electricity will be obtained from the Lüderitz electrical supply grid.

3.4. Sewage disposal

Only household sewer will be generated on site from toilet and kitchen facilities. This sewer will be connected to the sewer system of Lüderitz.

3.5. Storm water and drainage

The natural flow of storm water and drainage will be accommodated in the planning and construction of the buildings.

3.6. Solid waste

The solid waste generated on the site is collected by the Lüderitz Town Council through their weekly waste collection and management system and disposed of at their approved landfill site.

3.7. Fire protection

The Proponent will install the necessary fire protection infrastructure / extinguishers as per the requirements of Lüderitz Town Council.

4. Listed activities triggered by the proposed project

In terms of the Environmental Management Act (No. 7 of 2007) and the Environmental Impact Assessment Regulations (GN 30 in GG 4878 of 6 February 2012) an environmental impact assessment (EIA) report and management plan is required as the following listed activities are involved:

HAZARDOUS SUBSTANCE TREATMENT, HANDLING AND STORAGE

The storage and handling of dangerous goods, including petrol, diesel, liquid petroleum gas or paraffin, in containers with a combined capacity of more than 30 cubic meters at any one location.

INFRASTRUCTURE

The route determination of roads and design of associated physical infrastructure where -

- a) It is a public road*
- b) the road reserve is more than 30m wide, or*
- c) the road caters for more than one lane of traffic in both directions*

The proposed project is thus subject to obtaining an Environmental Clearance.

5. Approach to the Environmental Assessment of the Project

The purpose of the Environmental Impact Assessment is to consider social, ecological, legal and institutional issues related to the intended use of the land, guided by the principles and stipulations of the Namibian Environmental Assessment Policy (1995) and Namibia's Environmental Management Act (2007), to determine the desirability of the proposed activities on the suggested area and to develop an Environmental Management Plan (EMP) to mitigate and manage environmental issues identified in the process.

To accomplish the above, the impact study will be undertaken and based on the outcome of the findings; further specialists' investigation might be required to fully assess all impacts.

5.1. Aims of the Assessment Process

- To ascertain existing environmental conditions on the site to determine its environmental sensitivity.
- To inform I&APs and relevant authorities of the details of the proposed activities and to provide them with an opportunity to raise issues and concerns.
- To assess the significance of issues and concerns raised.
- To compile an impact report detailing all identified issues and possible impacts, stipulating the way forward and identify specialist investigations required.
- To outline management guidelines in an Environmental Management Plan (EMP) to minimize and/or mitigate potentially negative impacts.
- To comply with Namibia's Environmental Management Act (2007) and its regulations (2012).

5.2. Methodology

- a) Desktop sensitivity assessment

Literature available on the area will be reviewed to determine potential environmental issues and concerns.

b) Site assessment (site visit)

This involves investigating the environmental parameters on site in order to enable further understanding of the potential impacts on site.

c) Involvement of Interested and Affected Parties

Stakeholders will be given the opportunity to comment on the proposed activities and engage in the planning process. The findings of the assessment process will be incorporated in the environmental impact assessment report.

6. Expected Impacts on receiving environment

From previous experience with developments of this nature and comments received from Affected Parties, the following key impacts on the receiving environment can be expected:

6.1. Socio-economic environment

- Community health issues - transmission of diseases from the construction team and support staff to the local community.
- Increase in criminal activities during construction.
- Cultural/heritage impacts.
- Employment will be created during construction and operation.

6.2. Bio-physical environment

- Effect on natural and general ambiance of the area and surroundings.
- The use of water during construction and operations.
- The generation of dust during construction and operations.
- Material wastage (packing, building waste) polluting the site and neighbouring environment.
- Health and safety of construction and operational staff if not attended to satisfactorily.
- Impact on surface and groundwater.
- Noise during construction of bulk services as well as from the operations once constructed and in operation.
- Surface drainage systems (flow of surface draining systems).

These impacts and others which will be identified during the environmental scoping procedures and the engagement of the interested and affected parties will be evaluated to determine the significance of impact and if and how these impacts can be mitigated.

The above-named aspects will be covered in the Environmental Management Plan to be mitigated.

7. Public Involvement Program

During the public consultation process, Green Earth Environmental Consultants do the following:

- Identify and inform key stakeholders, authorities, the local authority (municipality), and interested or affected members of the public (I&APs).
- Give notice of the proposed activity as per the requirement of the Regulations through national newspapers, site notices and letters.
- Provide I&APs with additional information on the proposed activity by sending them this Background Information Document (BID).
- Schedule a public meeting if there is enough public interest to which all registered and identified I&APs will be invited, facilitate stakeholder participation and engagement and provide details of issues raised during the public involvement program and scoping exercise.
- Record all comments of I&APs, supported by responses provided by Green Earth, in a report to be included in the EIA.
- Inform the Proponent of comments relevant to the project's planning, implementation and operations and for inclusion in the EMP and consideration.

As an important part of the Environmental Impact Assessment process, you as stakeholder or interested member of the public are invited to find out more about what is being proposed, the implications thereof on the environment and/or to raise any issues or concerns.

Should you have any questions regarding the project, please contact **GREEN EARTH Environmental Consultants** at the contact details (*Charlie du Toit: 081 127 3145 or carien@greenearthnamibia.com*) provided on *Page 1* of this document. **The closing date for any questions, comments, inputs or information is 24 November 2023.**

COMMENTS FROM INTERESTED AND AFFECTED PARTIES

PERSONAL PARTICULARS			
Name and Surname:			
Organization:			
Postal Address:			
Telephone Number:		Email Address:	
Fax Number:		Cellphone Number.:	
INTEREST IN PROJECT			
COMMENTS ON PROJECT			
Signature:		Date:	

Kindly take note that comments should reach our office by 24 November 2023.