

14°40'E

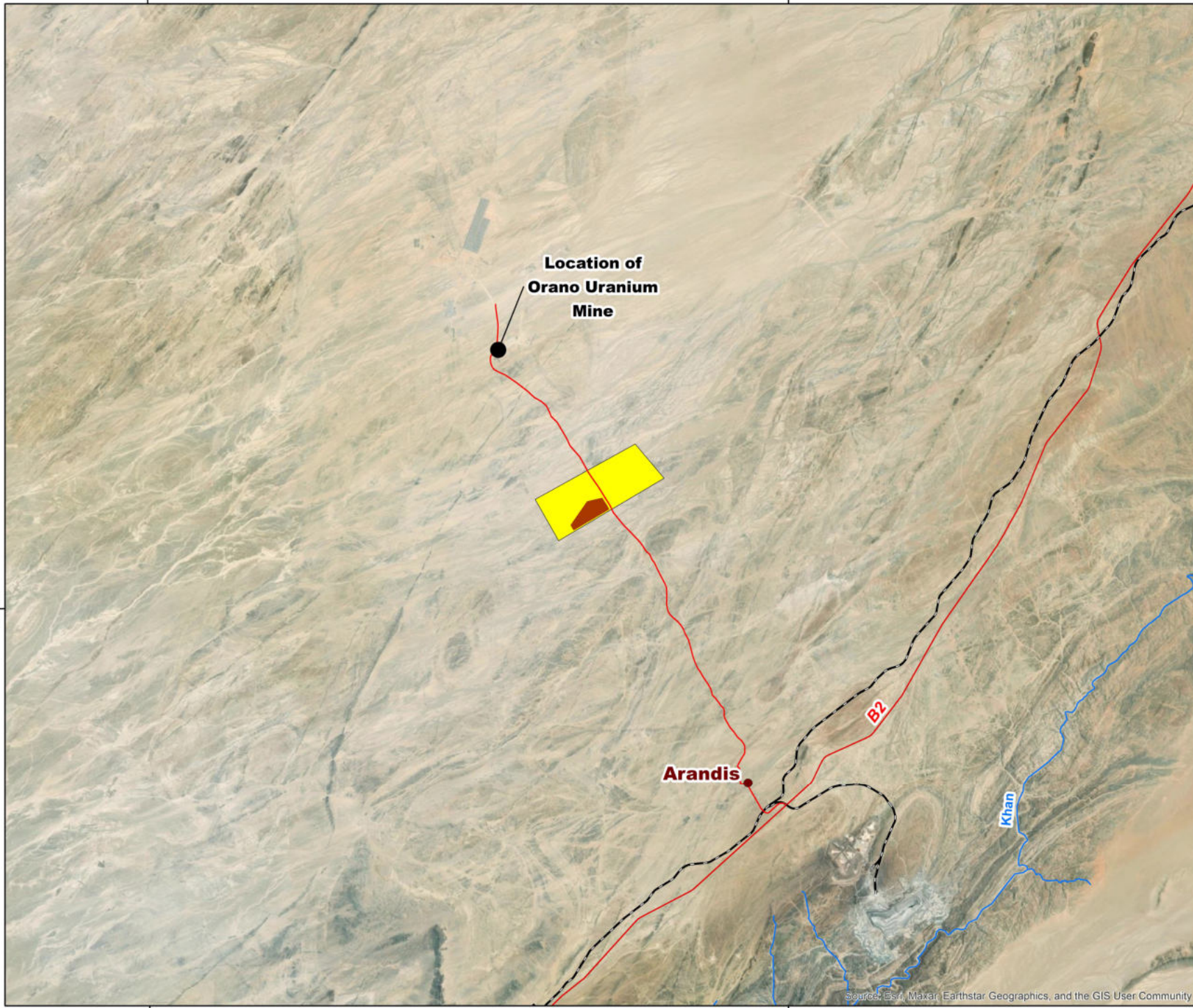
15°0'E

22°20'S

22°20'S

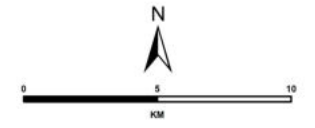
14°40'E

15°0'E



Legend

- Towns
 - Roads
 - - - Railway
 - Rivers
- Proposed Project Components**
- Project Site
 - Namwaste Management Facility Footprint



Scale: 1:200 000 @ A3
 Coordinate System: WGS 1984 UTM Zone 33S
 Projection: Transverse Mercator
 Datum: WGS 1984

NAMWASTE MANAGEMENT FACILITY

LOCALITY MAP

PO BOX 1596
 CRAMERVIEW
 JOHANNESBURG
 2060

T: +27 (11) 467-0945
 www.slrconsulting.com

Project No: 720.V09045.00008	Prepared By: BG
Map Ref No: 01	Date: 10/11/2023

720.V09045.00008.01 Locality Map_REV01_21062024

Source: Esri, Maxar, Earthstar Geographics, and the GIS User Community