

Background Information Document (BID)

Environmental Scoping Assessment (ESA) for the Proposed Exploration Activities of Base & Rare Metals, Dimesion stone, Industrial Minerals, and Precious Metals on Exclusive Prospecting License (EPL) No. 8014, located South of Usakos, Erongo Region, Namibia.

Environmental Consultant: Excel Dynamic Solutions (Pty) Ltd

Proponent: Ueriheka Roswitha Dealmanda

September 2023

1. INTRODUCTION

Excel Dynamic Solutions (Pty) Ltd (the consultant) has been appointed by Ueriheka Roswitha Dealmanda (the Proponent) to act on their behalf in applying for the Environmental Clearance Certificate (ECC) for the proposed exploration activities on Exclusive Prospecting License (EPL) 8014. The target commodities for the proposed prospecting and exploration activities are Base and Rare Metals, Dimension stones, Industrial Minerals, and Precious Metals. The 14841.0652 Hectares (ha) EPL is about 20 km South of Usakos in the Erongo Region **(Figure 1)**. The EPL covers (overlies) in Farms such as Abbabis; Farm No.70, Etusis; Farm No.75 and Ubib; Farm No. 76 **(Figure 2)**.

2. PURPOSE OF THE DOCUMENT

This is a non-technical document of the Environmental Scoping Assessment (ESA), which serves the purpose of informing Interested and Affected Parties (I&APs) / stakeholders of the following:

- Project location;
- Proposed activities of the project;
- Environmental Impact Assessment (EIA) process to be followed;
- How I&APs and/or stakeholders can be involved.

All I&APs and/or stakeholders are hereby encouraged to submit their comments/inputs/concerns on the proposed project activities, which can contribute significantly to the Environmental Scoping Report (ESR) and Environmental Management Plan (EMP). The EIA and EMP will be submitted to the Ministry of Environment, Forestry and Tourism (MEFT) and Ministry of Mines and Energy (MME) for decision-making.

3. ENVIRONMENTAL AUTHORISATION

In terms of the Environmental Management Act No.7 of 2007 and the EIA Regulations of 2012, the proposed project triggers listed activities that cannot be undertaken without an ECC. As such, an environmental clearance application will be submitted to the competent authorities (MEFT and MME) for decision-making before the commencement of the anticipated project activities.

The listed activities that trigger the proposed project are as follows:

MINING AND QUARRYING ACTIVITIES

3.1 *The construction of facilities for any process or activities which require a license, right, or other forms of authorization, and the renewal of a license, right, or any other form of authorization in terms of Minerals (Prospecting and Mining Act), 1992.*

3.2 *Other forms of mining or extraction of natural resources whether regulated by law or not.*

3.3 *Resource extraction, manipulation, conservation, and related activities.*

FORESTRY ACTIVITIES

4. *The clearance of forest areas, deforestation, afforestation, timber harvesting or any other related activity that requires authorization in terms of the Forest Act No. 12 of 2001 or any other law.*

- If required to access target sites, minimal vegetation clearing or thinning shall be conducted, but this will only be for dirt roads.

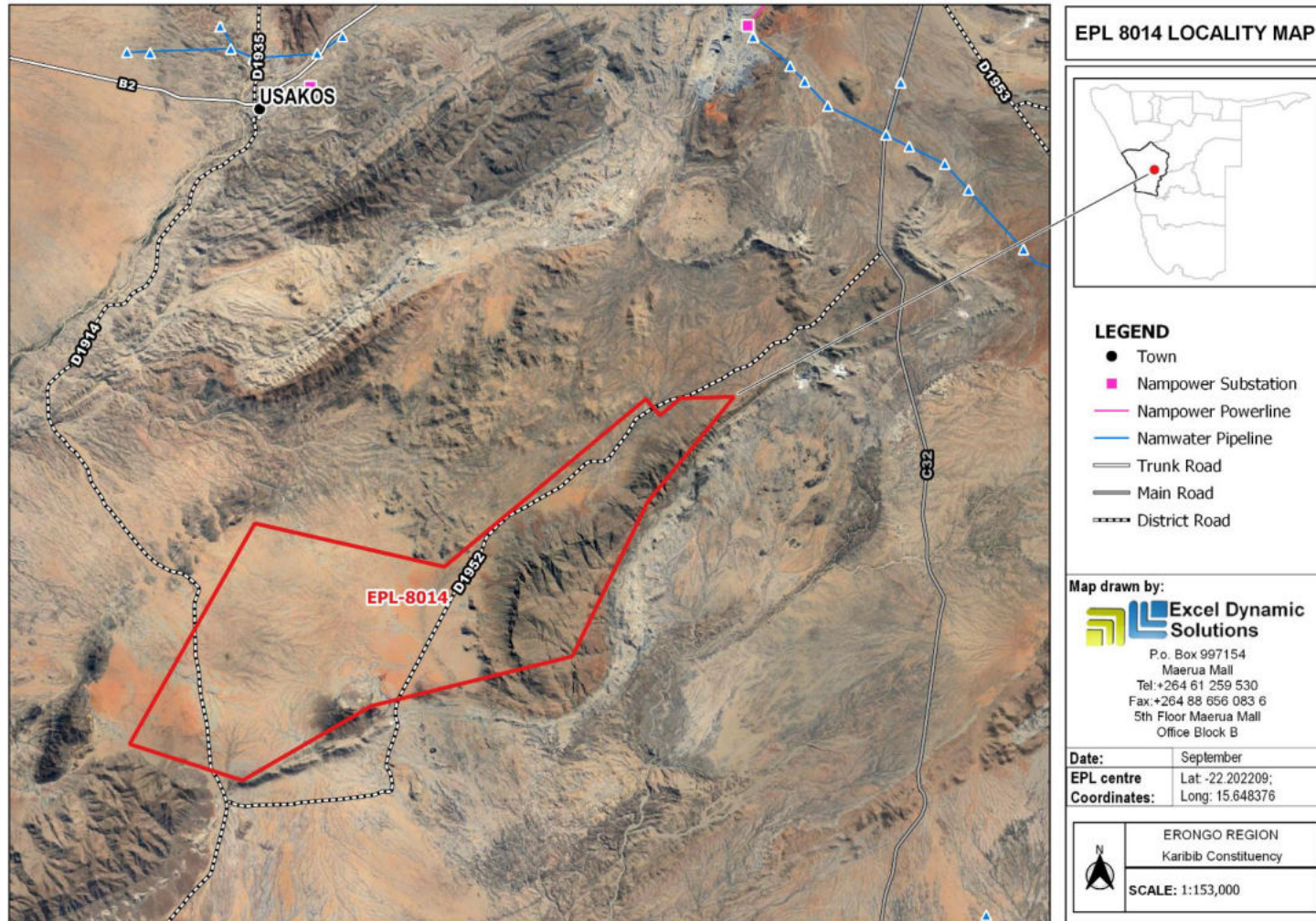


Figure 1: The locality map of EPL 8014.

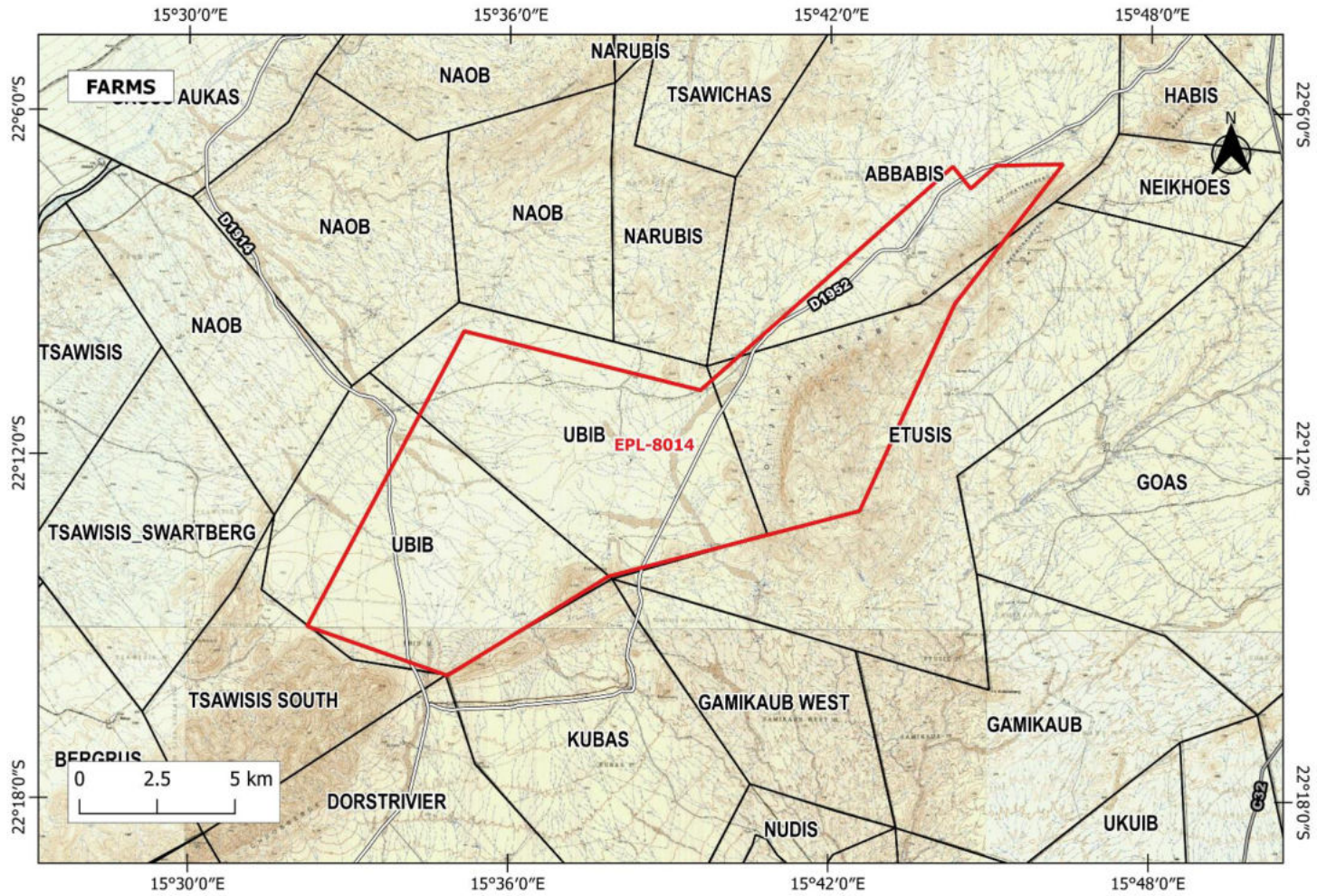


Figure 2: Land Use Map for EPL- 8014

4. PROJECT DESCRIPTION

The proposed activities entail prospecting and detailed exploration activities to delineate the mineral deposits. This is to determine whether the deposit for the targeted commodities is economically feasible (to advance to the resources development and mining phase).

Prospecting and exploration of minerals are the first components of any potential mining project, done to acquire the necessary data required for further decision-making and investment options.

Exploration activities are anticipated to last for about three years or sometimes longer (depending on the various factors such as turnaround between exploration data analysis and availability of funds between project phases).

4.1 Project plan and Activities

The proposed prospecting and exploration activities (methods) are divided into the following categories:

- Phase 1: Non-invasive techniques (prospecting) – mapping/surveys.
- Phase 2: Invasive techniques (detailed exploration) – soil sampling, trenching and exploration drilling.

The following exploration activities are anticipated:

- Desktop review of existing data to identify potential prospecting targets;
- Geological mapping;
- Electromagnetic and geophysical surveys;
- Soil and rock sampling;
- Reverse Circulation (RC) and/or diamond (core)drilling;
- If required, some vegetation may be cleared or thinned to create tracks to allow access to the targeted sites of interest, however, existing tracks will be used as far as reasonably practical;

Decommissioning, final rehabilitation.

4.2 Resources, Services, and infrastructure

The exploration activities will require the following services and infrastructure to progress smoothly:

Human Resources: It is anticipated that around 5-8 people will be employed for the project, and will be accommodated in tented camps and accommodation at nearby lodges.

Water Supply: Approximately 4500 liters of water per month will be required for the activities. If required or deemed necessary, or the proponent finds good groundwater during the exploration activity, the borehole may be used as a water source, with the permission of the land owner, and appropriate abstraction permit obtained from the competent authority.

Fuel Supply (machinery and equipment): Diesel will be used for machinery and equipment, and power generator.

Accessibility: The EPL is accessible via the D1914 and D 1952 roads which passes through the EPL from Usakos.

Sewage: Mobile chemical ablution facilities will be provided on-site. Sewage waste will be disposed of appropriately as per instructions of the facility manufacturer.

Solid waste: Sufficient waste bins (containers) will be made available at exploration sites and campsites for waste storage and later disposal at the nearest approved waste facility.

Hazardous waste: The waste fuel/oils will be carefully stored in a standardized container for disposal at an approved hazardous waste management facility in the nearest Town.

Health and Safety: Adequate and appropriate Personal Protective Equipment (PPE) will be provided to project personnel. A minimum of two first aid kits will be readily available onsite.

Potential Accidental Fire Outbreaks: Fire extinguishers will be readily available in vehicles, at sites, and campsite.

Project Equipment, Material, Machinery, and Vehicles: 4X4 vehicles, a drilling supporting truck, an excavator/front-end loader, a dozer, an air compressor, drilling fluids stored in manufacturers approved containers, and a generator for power supply will be required for the proposed project.

Upon completion of exploration works, the disturbed sites will be rehabilitated as far as practically possible, to their pre-exploration state. This will include backfilling of exploration trenches, and boreholes, leveling of stockpiled topsoil, and cleaning of site areas.

5. ENVIRONMENTAL ASSESSMENT

This ESA process is conducted in accordance with the provisions of the EMA (Act No 7 of 2007) and its 2012 EIA Regulations. The primary objective of the ESA is to identify potential negative impacts associated with the project and that shall be assessed and provide potential effective mitigation measures for implementation.

The main objectives of this ESA are, but not limited to:

- Identify potential impacts associated with the proposed Activity.
- Inform I&APs and relevant authorities about the project and provide them with an opportunity to participate during the ESA process.
- Assess the significance of issues and concerns raised.
- Compile a report addressing all identified issues and potential impacts.
- Compile a Draft Environmental Management Plan (EMP) which includes impacts management and mitigation measures.

5. POTENTIAL IMPACTS

The following potential socio-economic and environmental impacts are anticipated during exploration activities:

5.1 Positive impacts:

- Socio-economic development: employment creation and skills transfer.
- Investment opportunities/infrastructure-related development benefits,
- Produce a trained workforce and small businesses in the area.
- Boosting local economic and regional economic development.
- Increased support for local businesses through the procurement of locally available goods and services.

5.2 Negative impacts:

- Disturbance of existing communal grazing areas,
- Physical land/soil disturbance and prone to erosion
- Impact on fauna and flora (habitat disturbance and poaching).
- Water resources (over-abstraction of water) and soil pollution.
- Air quality issue owing to dust generation.
- Occupational and community health and safety risks/hazards
- Vehicular traffic safety and services infrastructure (local roads).
- Vibrations and noise associated with drilling activities.
- Environmental pollution from poor waste management,
- Archaeological or cultural heritage impact
- Potential social nuisance and land use conflicts

Other potential impacts may be identified as the ESA process progresses. All impacts and public concerns/comments will be incorporated and addressed in the Environmental Report and EMP.

6. PUBLIC CONSULTATION REGISTRATION

Public consultation is an important part of the EA process, which ensure that sufficient information is gathered from and/or shared transparently with all, I&APs and stakeholders, including the findings of the reports, during the specified comment periods.

I&APs are hereby invited to comment on environmental, social, and economic issues relating to the proposed project.

To comment or receive further information on the proposed project, please register with Excel Dynamic Solutions (Pty) Ltd as an Interested & Affected Party (I &AP) at the address below.



Contact: Ms. Aili lipinge

Tel: +264 (0) 61 259 530

Fax: +264 886 560 836

Email: public@edsnamibia.com / iipingea@edsnamibia.com

P O Box 997154, Maerua Mall, Windhoek