

<p>Project Name:</p>	<p>BACKGROUND INFORMATION DOCUMENT FOR THE MATERIALS RECOVERY FACILITY OF RENT-A-DRUM ON ERF 6253, WALVIS BAY, ERONGO REGION</p>
<p>The Proponent:</p>	<div data-bbox="695 629 1318 790" data-label="Image"> </div> <p>(Pty) Ltd PO BOX 30735 PIONIERSPARK</p>
<p>Prepared by:</p>	<div data-bbox="558 1088 1445 1323" data-label="Image"> </div> <div data-bbox="558 1323 1445 1424" data-label="Text"> <p>1st floor Bridgeview Offices & Apartments, No. 4 Dr Kwame Nkrumah Avenue, Klein Windhoek, Namibia PO Box 6871, Ausspannplatz, Windhoek</p> </div>
<p>Release Date:</p>	<p>September 2023</p>
<p>Consultant:</p>	<p>C. Du Toit C. Van Der Walt Cell: 081 127 3145 Email: charlie@greenearthnamibia.com</p>

Table of Contents

1. Introduction	3
2. Background Information on Project	3
2.1 Site details	3
3. Supporting Bulk Services and Infrastructure Provision.....	7
3.1. Access.....	7
3.2. Water supply / requirements.....	7
3.3. Electricity	7
3.4. Sewage disposal	7
3.5. Storm water and drainage	7
3.6. Solid waste	7
3.7. Fire protection	7
4. Listed activities triggered by the proposed project	8
5. Approach to the Environmental Assessment of the Project.....	8
5.1. Aims of the Assessment Process	9
5.2. Methodology.....	9
6. Expected Impacts on receiving environment	9
7. Public Involvement Program	10

List of Figures

<i>Figure 1: Locality of Erf 6253, Walvis Bay.....</i>	<i>4</i>
<i>Figure 2: Locality Plan of Erf 6253, Walvis Bay with Photo</i>	<i>5</i>

THE FOLLOWING IS A BACKGROUND INFORMATION DOCUMENT FOR THE ENVIRONMENTAL IMPACT ASSESSMENT AND ENVIRONMENTAL MANAGEMENT PLAN TO OBTAIN AN ENVIRONMENTAL CLEARANCE FOR THE MATERIALS RECOVERY FACILITY OF RENT-A-DRUM ON ERF 6253, WALVIS BAY, ERONGO REGION

1. Introduction

Green Earth Environmental Consultants have been appointed by Rent-a-Drum (Pty) Ltd to attend to and complete an Environmental Impact Assessment (EIA) and Environmental Management Plan (EMP) in order to obtain an Environmental Clearance Certificate for the Materials Recovery Facility (MRF) of Rent-a-Drum (RAD) on Erf 6253, Walvis Bay, Extension 19, Erongo Region as per the requirements of the Environmental Management Act (No. 7 of 2007) and the Environmental Impact Assessment Regulations (GN 30 in GG 4878 of 6 February 2012).

The Background Information Document (BID) serves to convey information regarding the proposed project to Interested and Affected Parties (I&APs) to allow them the opportunity to comment on the proposed project.

This document contains the following information:

- A brief background on the proposed project.
- The approach to the environmental assessment process.
- Environmental and planning issues identified.
- How to become involved.

2. Background Information on Project

2.1 Site details

Rent-a-Drum (Pty) Ltd (RAD) currently operates from Erf 4477, New Industrial Area, Langer Heinrich Crescent, No. 54, Walvis Bay. This site is a leased site, it is too small to accommodate their activities and it is located some distance from Walvis Bay's Landfill site. Because of the limitations of this site, they applied for an alternative site located on the way and as close as possible to the Walvis Bay Landfill site due to the synergies that can be derived from improved and more efficient logistics in the management of the waste. Walvis Bay Town Council approved the sale of Erf 6253 to RAD. Erf 6253 is in Gertrude Rikumba Kadanga Hilukilwa Street, Walvis Bay, Extension 19, Erongo Region, northwest of the current Municipal Landfill site. See *Maps* below showing the locality of the site:

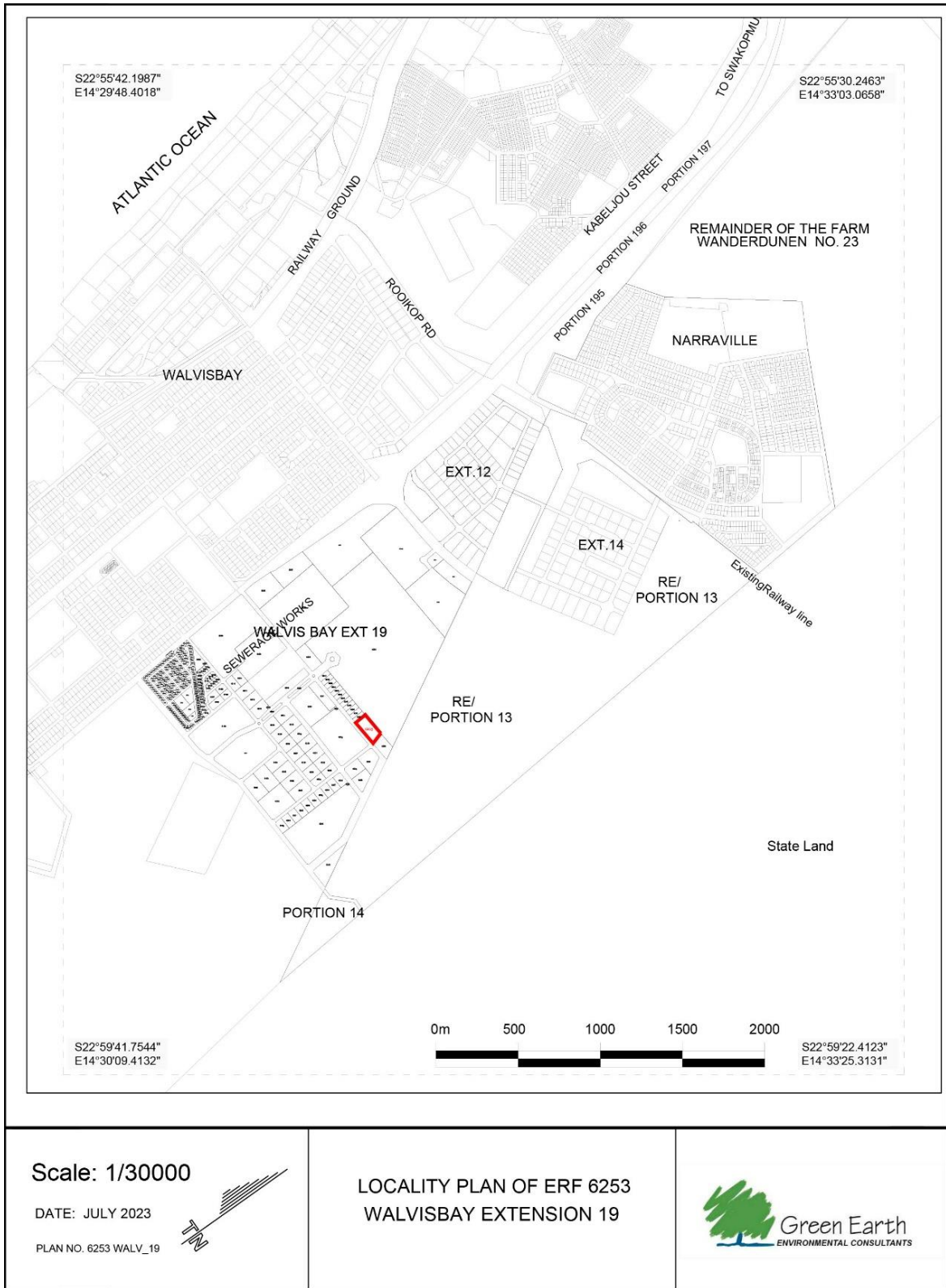


Figure 1: Locality of Erf 6253, Walvis Bay

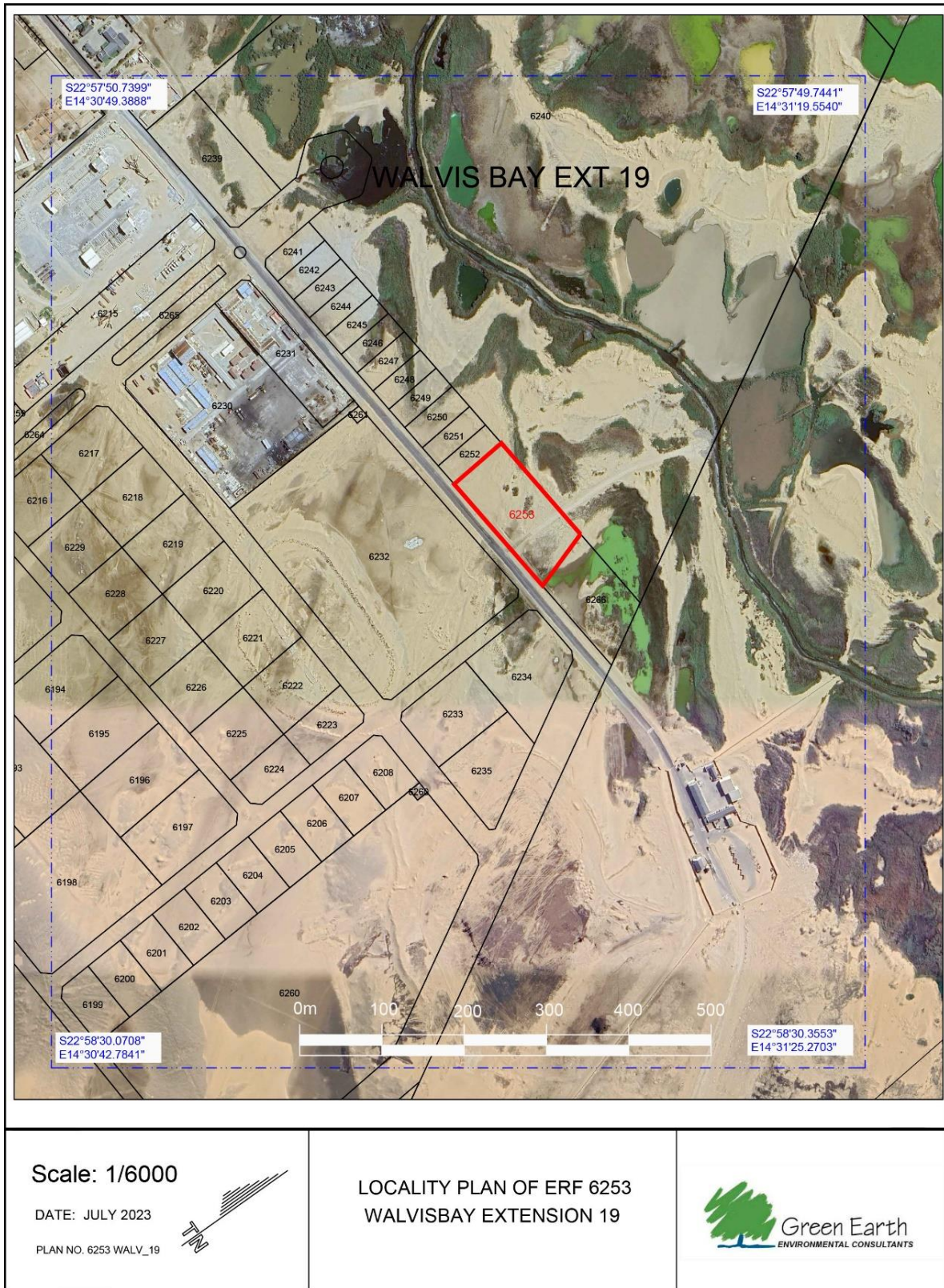


Figure 2: Locality Plan of Erf 6253, Walvis Bay with Photo

RAD intends to construct a MRF that will include a building which accommodates the processes and machinery for receiving, separating and/or processing of different recyclable materials from waste collected straight from households and businesses and the parking and movement of vehicles. The following products are handled on site:

Products:	Description:
Plastic	Wash plant blue, LDPE Mix Plastic, LDPE Clear Plastic, LDPE Heavy Print, LDPE Consol Plastic, LDPE Plastic Rolls, LLDPE Plastic Cling Wrap. HDPE Plastic Bottles, HDPE Plastic Crates, HDPE Plastic Bins, HDPP Plastic Caps, PET Clear Plastic Bottles, PET Green Plastic Bottles, PET Brown Plastic Bottles, PET Plastic Preforms
Paper	HL1 Shredding Paper, SMX White Paper, Latex Glazy Paper, SBM Magazines Paper, Flat News Paper, Tissue Broke Paper
Glass	Mix Glass
Liquids	Only oils that are used for operations
Metal	Cans Metal, Aluminum, Scrap Metal
Additional items	Poly Prop Woven Bags, Tetra Pack, Polly Board, K4 Box, CMW Cores, CMW Mix, CMW Pallet Dividers

Average volume per product:

Item:	Amount:
Box	87 x ton
Paper	7 x ton
Plastic	43 x ton
RDF	3 x ton

The products will be sorted and baled on site. K4 boxes, glass and Wash Plant Blue is send directly to South Africa. The remainder of the products are sent to Windhoek's Rent-A-Drum where it is further distributed.

3. Supporting Bulk Services and Infrastructure Provision

The following bulk services are already present on the site:

3.1. Access

The erf will obtain access from the southwestern side from a street named Gertrude Rikumba Kadanga Hilukilwa Street.

3.2. Water supply / requirements

Water will be supplied directly from the Walvis Bay Municipality's water reticulation system.

3.3. Electricity

Electricity will be supplied by Erongo Red through their electrical distribution network.

3.4. Sewage disposal

The sewage will be connected to the sewer system of the Walvis Bay Municipality.

3.5. Storm water and drainage

The stormwater management will be in accordance with Municipal Regulations.

3.6. Solid waste

Solid waste disposal is handled in accordance with the regulations of the Municipality and done by Rent-A-Drum.

3.7. Fire protection

The site operates under the fire control measures as per the Walvis Bay Fire Regulations. The fire protection measures are inspected regularly by the Municipality and the Fitness Certificate which allows the operation. The activity is subject to compliance with the fire regulations. RAD also contracted Fast Fire Services Walvis Bay to ensure that their fire protection equipment is regularly serviced and maintained.

4. Listed activities triggered by the proposed project

In terms of the Environmental Management Act (No. 7 of 2007) and the Environmental Impact Assessment Regulations (GN 30 in GG 4878 of 6 February 2012) an environmental impact assessment (EIA) report and management plan is required as the following listed activities are involved:

WASTE MANAGEMENT, TREATMENT, HANDLING AND DISPOSAL ACTIVITIES

2.1 The construction of facilities for waste sites, treatment of waste and disposal of waste.

2.2 Any activity entailing a scheduled process to in the Atmospheric Pollution Prevention Ordinance, 1976.

2.3 The import, processing, use and recycling, temporary storage, transit or export of waste.

HAZARDOUS SUBSTANCE TREATMENT, HANDLING AND STORAGE

9.1 The manufacturing, storage, handling or processing of a hazardous substance defined in the Hazardous Substances Ordinance, 1974.

9.2 Any process or activity which requires a permit, license or other form of authorization, or the modification of or changes to existing facilities for any process or activity which requires an amendment of an existing permit, license or authorization or which requires a new permit, license or authorization in terms of a law governing the generation or release of emissions, pollution, effluent or waste.

9.4 The storage and handling of a dangerous goods, including petrol, diesel, liquid petroleum gas or paraffin, in containers with a combined capacity of more than 30 cubic meters at any one location.

9.5 Construction of filling stations or any other facility for the underground and aboveground storage of dangerous goods, including petrol, diesel, liquid, petroleum, gas or paraffin.

The proposed project is thus subject to obtaining an Environmental Clearance.

5. Approach to the Environmental Assessment of the Project

The purpose of the Environmental Impact Assessment is to consider social, ecological, legal and institutional issues related to the intended use of the land, guided by the principles and stipulations of the Namibian Environmental Assessment Policy (1995) and Namibia's Environmental Management Act (2007), to determine the desirability of the proposed activities on the suggested area and to develop an Environmental Management Plan (EMP) to mitigate and manage environmental issues identified in the process.

To accomplish the above, the impact study will be undertaken and based on the outcome of the findings; further specialists' investigation might be required to fully assess all impacts.

5.1. Aims of the Assessment Process

- To ascertain existing environmental conditions on the site to determine its environmental sensitivity.
- To inform I&APs and relevant authorities of the details of the proposed activities and to provide them with an opportunity to raise issues and concerns.
- To assess the significance of issues and concerns raised.
- To compile an impact report detailing all identified issues and possible impacts, stipulating the way forward and identify specialist investigations required.
- To outline management guidelines in an Environmental Management Plan (EMP) to minimize and/or mitigate potentially negative impacts.
- To comply with Namibia's Environmental Management Act (2007) and its regulations (2012).

5.2. Methodology

a) Desktop sensitivity assessment

Literature available on the area will be reviewed to determine potential environmental issues and concerns.

b) Site assessment (site visit)

This involves investigating the environmental parameters on site in order to enable further understanding of the potential impacts on site.

c) Involvement of Interested and Affected Parties

Stakeholders will be given the opportunity to comment on the proposed activities and engage in the planning process. The findings of the assessment process will be incorporated in the environmental impact assessment report.

6. Expected Impacts on receiving environment

From previous experience with developments of this nature and comments received from Affected Parties, the following key impacts on the receiving environment can be expected:

6.1. Socio-economic environment

- Community health issues - transmission of diseases from the construction team and support staff to the local community.
- Increase in criminal activities during construction.
- Cultural/heritage impacts.
- Employment will be created during construction and operation.

6.2. Bio-physical environment

- Effect on natural and general ambiance of the area and surroundings.
- The use of water during construction and operations.
- The generation of dust during construction and operations.

- Material wastage (packing, building waste) polluting the site and neighbouring environment.
- Health and safety of construction and operational staff if not attended to satisfactorily.
- Impact on surface and groundwater.
- Noise during construction of bulk services as well as from the operations once constructed and in operation.
- Surface drainage systems (flow of surface draining systems).

These impacts and others which will be identified during the environmental scoping procedures and the engagement of the interested and affected parties will be evaluated to determine the significance of impact and if and how these impacts can be mitigated.

The above-named aspects will be covered in the Environmental Management Plan to be mitigated.

7. Public Involvement Program

During the public consultation process, Green Earth Environmental Consultants do the following:

- Identify and inform key stakeholders, authorities, the local authority (municipality), and interested or affected members of the public (I&APs).
- Give notice of the proposed activity as per the requirement of the Regulations through national newspapers, site notices and letters.
- Provide I&APs with additional information on the proposed activity by sending them this Background Information Document (BID).
- Schedule a public meeting if there is enough public interest to which all registered and identified I&APs will be invited, facilitate stakeholder participation and engagement and provide details of issues raised during the public involvement program and scoping exercise.
- Record all comments of I&APs, supported by responses provided by Green Earth, in a report to be included in the EIA.
- Inform the Proponent of comments relevant to the project's planning, implementation and operations and for inclusion in the EMP and consideration.

As an important part of the Environmental Impact Assessment process, you as stakeholder or interested member of the public are invited to find out more about what is being proposed, the implications thereof on the environment and/or to raise any issues or concerns.

Should you have any questions regarding the project, please contact **GREEN EARTH Environmental Consultants** at the contact details (*Charlie du Toit: 081 127 3145 or carien@greenearthnamibia.com*) provided on *Page 1* of this document. **The closing date for any questions, comments, inputs or information is 15 September 2023.**

