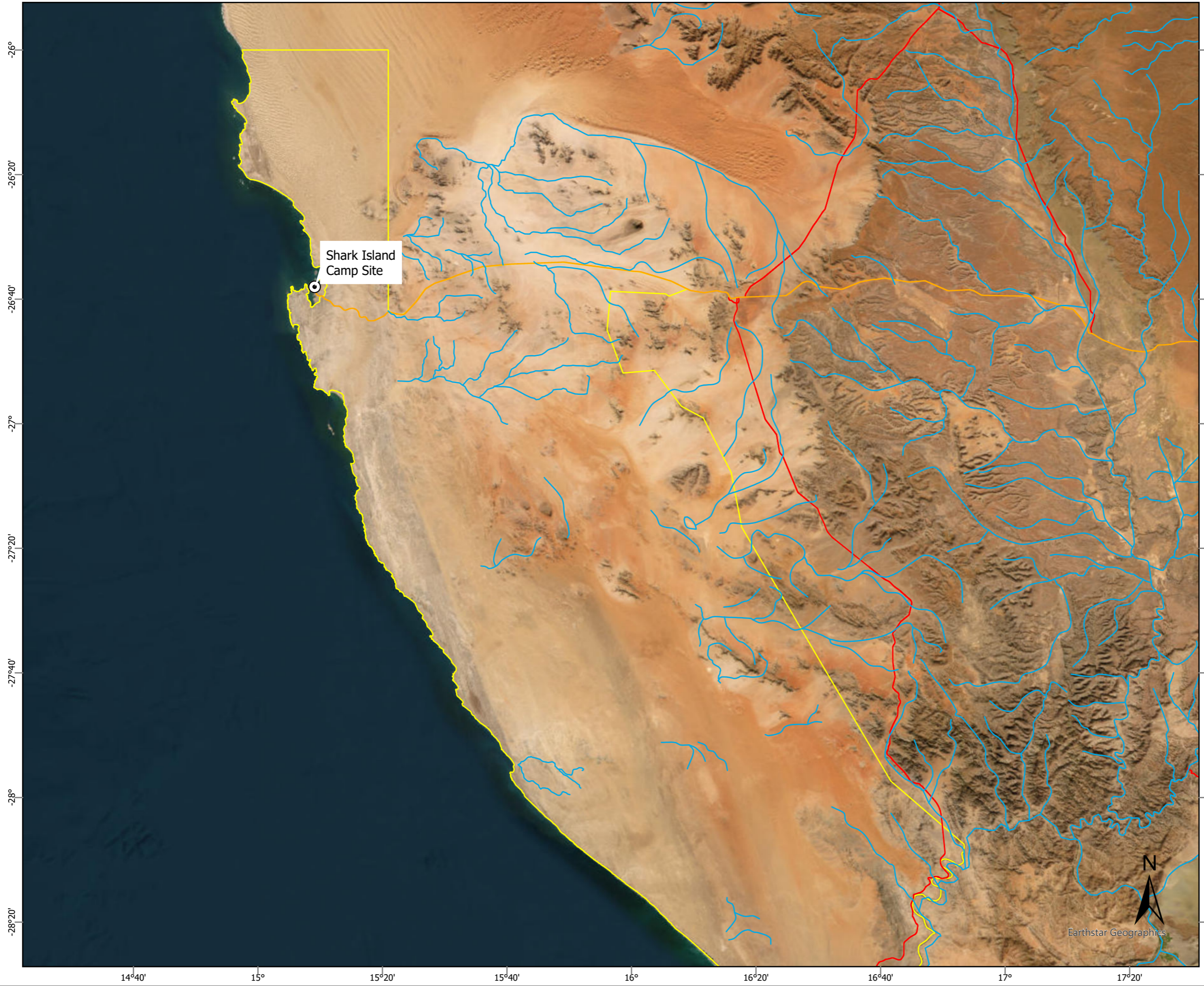


NAMIBIA WILDLIFE RESORTS: SHARK ISLAND LOCALITY MAP



Legend

- Site Location
- Restricted Diamond Area

Road Network

- Main Roads N13
- Trunk Roads N13

Rivers and Streams

- Rivers

© OpenStreetMap (and contributors), CC-BY-SA

Data Sources:
Esri World Imagery Basemap

0 5 10 20 30 Kilometers
SCALE: 1:1,067,683

FIGURE NO.: -	MAP NUMBER: 22-0573-04
DRAWN BY: N NELIWA ENVIRONMENTAL INTERN	REVIEWED BY: V SHIKWAYA PROJECT MANAGER
DATUM: WGS84	DATE: 13 JUNE 2023
PROJECTION: GEOGRAPHIC	
PROJECT:	DEVELOPMENT OF ENVIRONMENTAL MANAGEMENT PLANS FOR NAMIBIA WILDLIFE RESORTS TOURISM FACILITIES
CLIENT:	NAMIBIA WILDLIFE RESORTS

Earthstar Geographics

GCS
Water & Environmental Consultants

45 Feld Street Ausspannplatz
PO Box 81808 Windhoek
Namibia
Tel: +264 (0) 248 614
Fax: +264 (0) 238 586
E-mail: jhb@gcs-sa.biz
www.gcs-sa.biz