

## 1.2 PROJECT LOCATION

The site is situated approximately 5.3 kilometres north of Oshakati on the C46 road to Okatana. The property has an approximate size of 808 square metres and is included in the Local Authority Boundary of Oshakati. The Erf No. 150 Ekuku Proper to be subdivided into 2 erven is currently vacant and undeveloped, and is zoned “Residential”. See **Figure 1** for the locality of the Erf No. 150 Ekuku, Oshakati, and **Geographic Coordinates:** -17.75865, 15.70079.

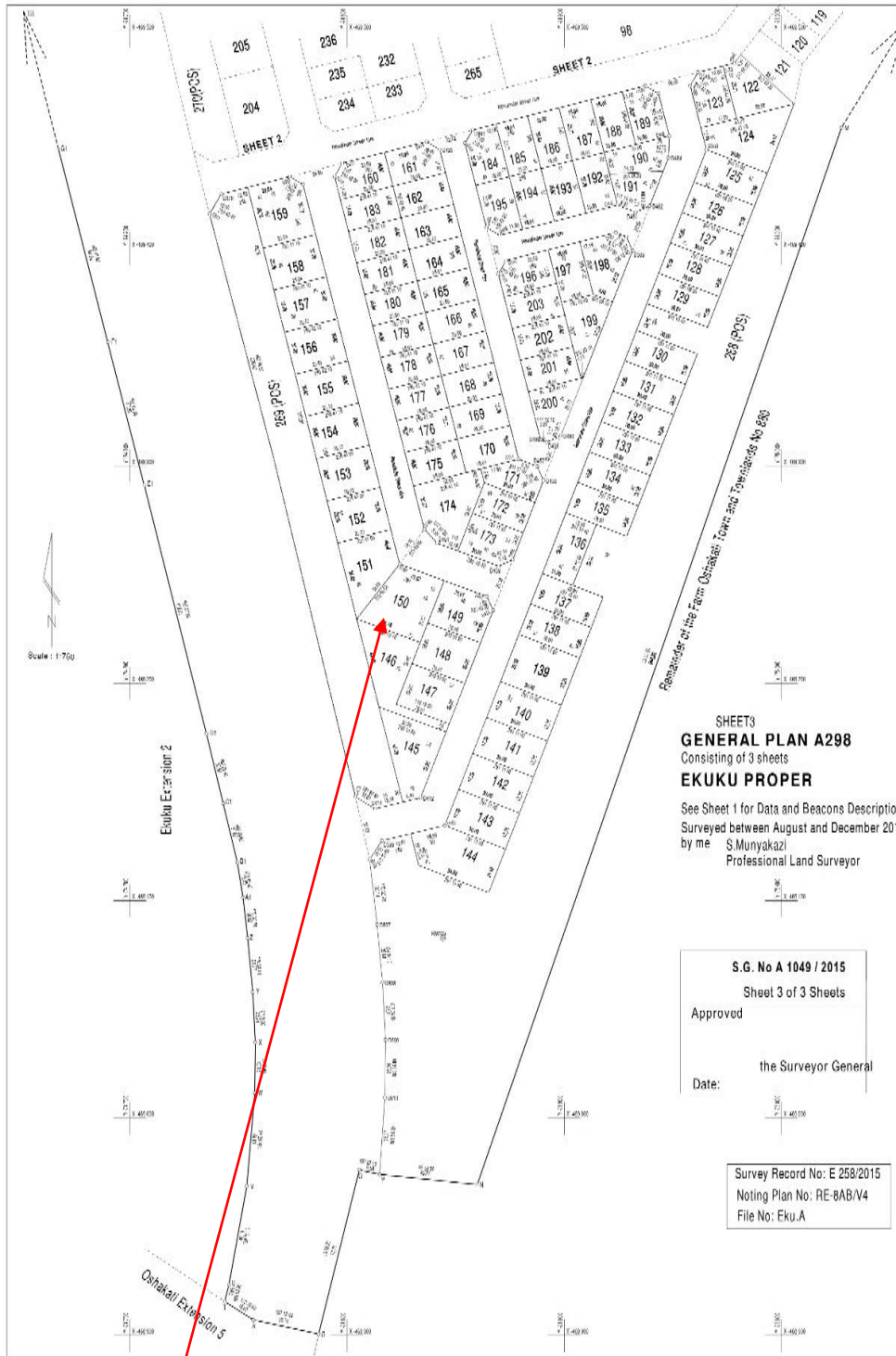


Figure 1 Locality Map of Erf No. 150, Ekuku Proper, Oshakati