

PRELIMINARY SITE MAP

New community campsite and craft shop,
Otjiu-West Conservancy, Opuwo Rural
Constituency, Kunene Region

November 2023

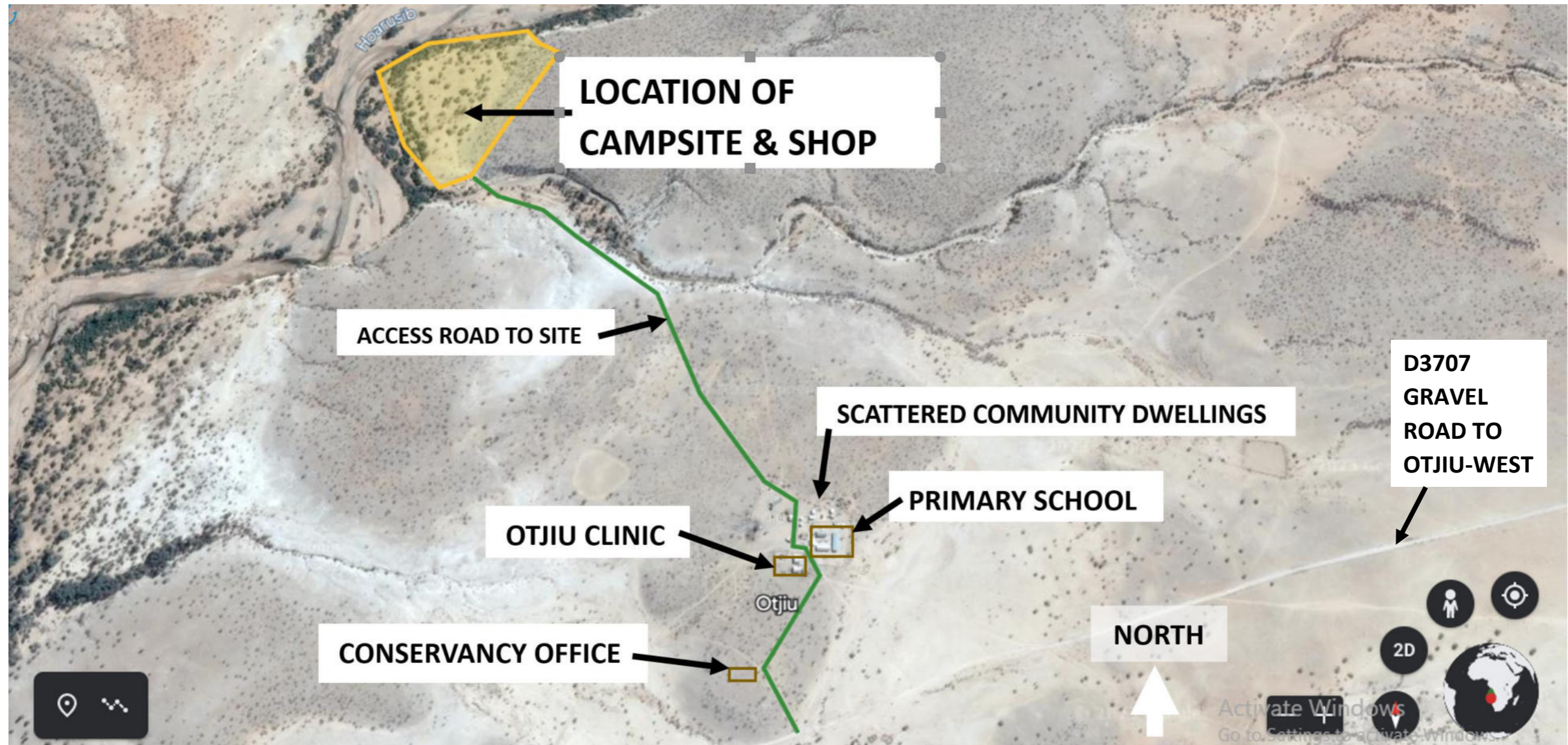




Otjiu-West in relation to Opuwo

1. LOCATION AND SURROUNDINGS

The project site is close to the main settlement of the Otjiu West Conservancy in Opuwo Rural Constituency, Kunene Region. It lies approximately 85 km west of Opuwo and is approached via the C43 to D3705 to D3707 gravel road between Opuwo and Purros.



Otjiu-West Campsite and Craft Shop location

2. SITE DESCRIPTION:

Otjiu West village with its primary school, Clinic, Conservancy Office, and various dwellings lies approximately 85km west of Opuwo Town. The proposed site for the craft shop and campsite is northeast of Otjiu-West village, bordered by the Hoarusib River along the north and west, and the Otjiu River on the south. To the east is a series of hills.

The site coordinates: 18°13'15"S , 13°16'01"E