






Geographic Coordinates -22.980945649074613,14.604758553941362



ABCDEFG represents 7280.5352 hectares of land, Coordinates, Angles of Direction, Side Meters for Farm Bakersville No. 308

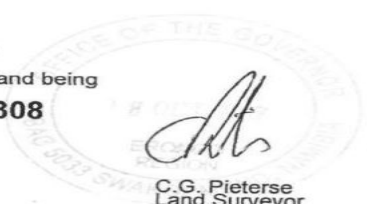
APPROVED 		13 OCT 2017		No. A692/2017		
for SURVEYOR-GENERAL				SHEET 1 OF 2 SHEETS		
SIDES metres	ANGLES OF DIRECTION	CO-ORDINATES System: Lo.22/15		Designation		
Constants						
AB	6328.00	270.04.30	A	+34 581.61	+98 140.38	new1
BC	13382.87	03.15.40	B	+28 253.10	+98 148.65	NEW151
CD	4312.08	98.41.00	C	+29 014.44	+111 509.88	NEW113
DE	3125.34	180.00.00	D	+33 277.11	+110 858.90	new2
EF	489.95	161.50.20	E	+33 277.05	+107 733.55	DBAV
FG	1505.09	120.51.50	F	+33 429.74	+107 268.02	DBAU
GA	8356.70	180.57.40	G	+34 721.65	+106 495.90	2213
Servitude Data						
hj	6494.762	234.51.00	h	+34 667.32	+103 259.81	sp19
			j	+28 367.79	+101 679.12	SER5
				+37 791.08	+91 582.39	Oupad
				+34 756.34	+108 574.68	Rooikop

Servitude Note:
1. The line hj represents the centerline of a 120m powerline servitude as shown.

Description of beacons :
A,B,C,D ----- 20mm iron peg
E,F,G ----- 30mm iron peg in cairn
hj ----- 16mm iron peg

The figure A B C D E F G
represents 7280.5352 hectares of land being
Farm Bakersville No.308

Situate in Registration Division G, Erongo Region, Namibia
Surveyed in September 2017 by me



C.G. Pieterse
Land Surveyor

This diagram is annexed to No. d.d Registrar of deeds	The original diagram is Transfer/Grant	S.R. No.: E251/2017 Gen. Plan No.: Noting Plan: MD-S File No.: G308
---	--	--

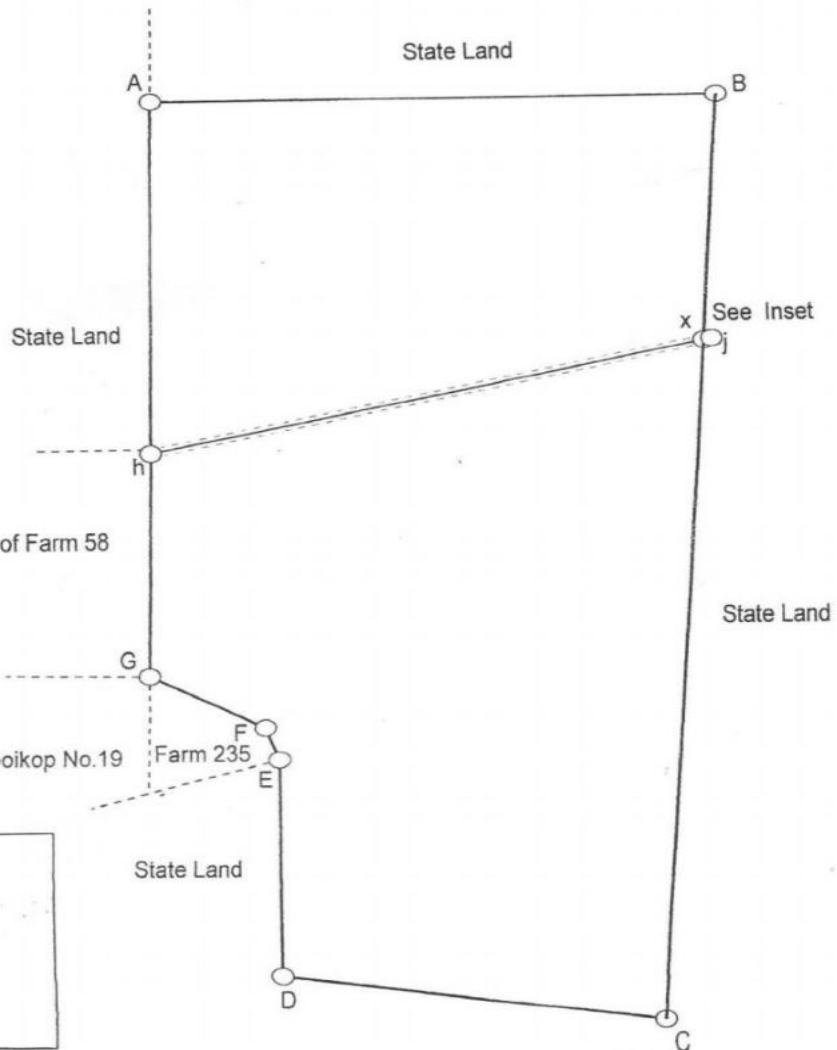
APPROVED

for SURVEYOR-GENERAL

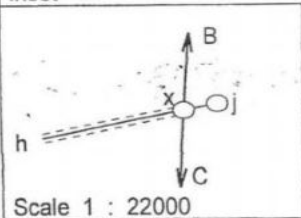
13 OCT 2017

No. A692/2017

SHEET 2 OF 2 SHEETS



Inset



Farm Bakersville No.308

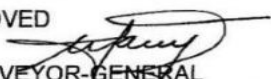


Surveyed in September 2017 by me

C.G. Pieterse
Land Surveyor

Farm Bakersville No. 308 Layout Plan from the Land Surveyor, 2017

APPROVED



13 OCT 2017

No. A695/2017

for SURVEYOR-GENERAL

SHEET 1 OF 2 SHEETS

SIDES metres	ANGLES OF DIRECTION	CO-ORDINATES			Designation	
		Y	System:Lo.22/15	X		
Constants						
AB	1119.80	270.04.20	A	+28 253.10	+98 148.65	NEW151
BC	13549.55	03.20.20	B	+27 133.31	+98 150.08	NEW161
CD	1104.81	98.41.00	C	+27 922.30	+111 676.66	NEW111
DA	13382.87	183.15.40	D	+29 014.44	+111 509.88	NEW113
Servitude Data						
ef	13399.59	3.23.20	e	+28 123.06	+98 148.74	NEW141
			f	+28 915.18	+111 525.00	NEW112
gh	1068.64	258.02.10	g	+28 357.07	+101 429.54	PEG4
			h	+27 311.66	+101 208.00	NEW162
jk	45.25	282.11.00	j	+27 929.43	+101 687.30	SER9
kl	619.64	301.55.20	k	+27 885.20	+101 696.84	SER8
			l	+27 359.28	+102 024.51	NEW163
km	158.59	215.51.50	k	+27 885.20	+101 696.84	SER8
mn	1124.44	158.15.40	m	+27 798.15	+101 576.43	SER7
			n	+28 214.62	+100 531.97	SER11
gp	439.00	275.01.30	g	+28 357.07	+101 429.54	PEG4
pq	301.54	2.31.10	p	+27 919.77	+101 468.00	PEG6
qr	438.25	93.02.10	q	+27 933.03	+101 769.24	PEG1
rg	316.78	182.27.30	r	+28 370.72	+101 746.02	PEG2
			△	+37 791.08	+91 582.39	Oupad
			△	+34 756.34	+108 574.68	Rooikop

Servitude Note:

1. The line ef represents the centerline of a 180m wide powerline servitude as shown
2. The line gh represents the centerline of a 60m wide powerline servitude as shown
3. The line jkl represents the centerline of a 60m wide powerline servitude as shown
4. The line jkmn represents the centerline of a 60m wide powerline servitude as shown
5. The figure gpqr represents 13.5537 hectares of land being a powerline servitude area as shown

The figure A B C D
represents 1493.3742 hectares of land being

Farm Bakersville East No.309

Situate in Registration Division G, Erongo Region, Namibia

Surveyed in September 2017 by me



C.G. Pieterse
Land Surveyor

This diagram is annexed to No. d.d Registrar of deeds	The original diagram is	S.R. No.:E251/2017
	Transfer/Grant	Gen. Plan No.: Noting Plan:MD-S File No.:G309

ABCD represents 1493.3742 hectares of land, Coordinates, Angles of Direction, and Side Meters for Farm Bakersville No. 309

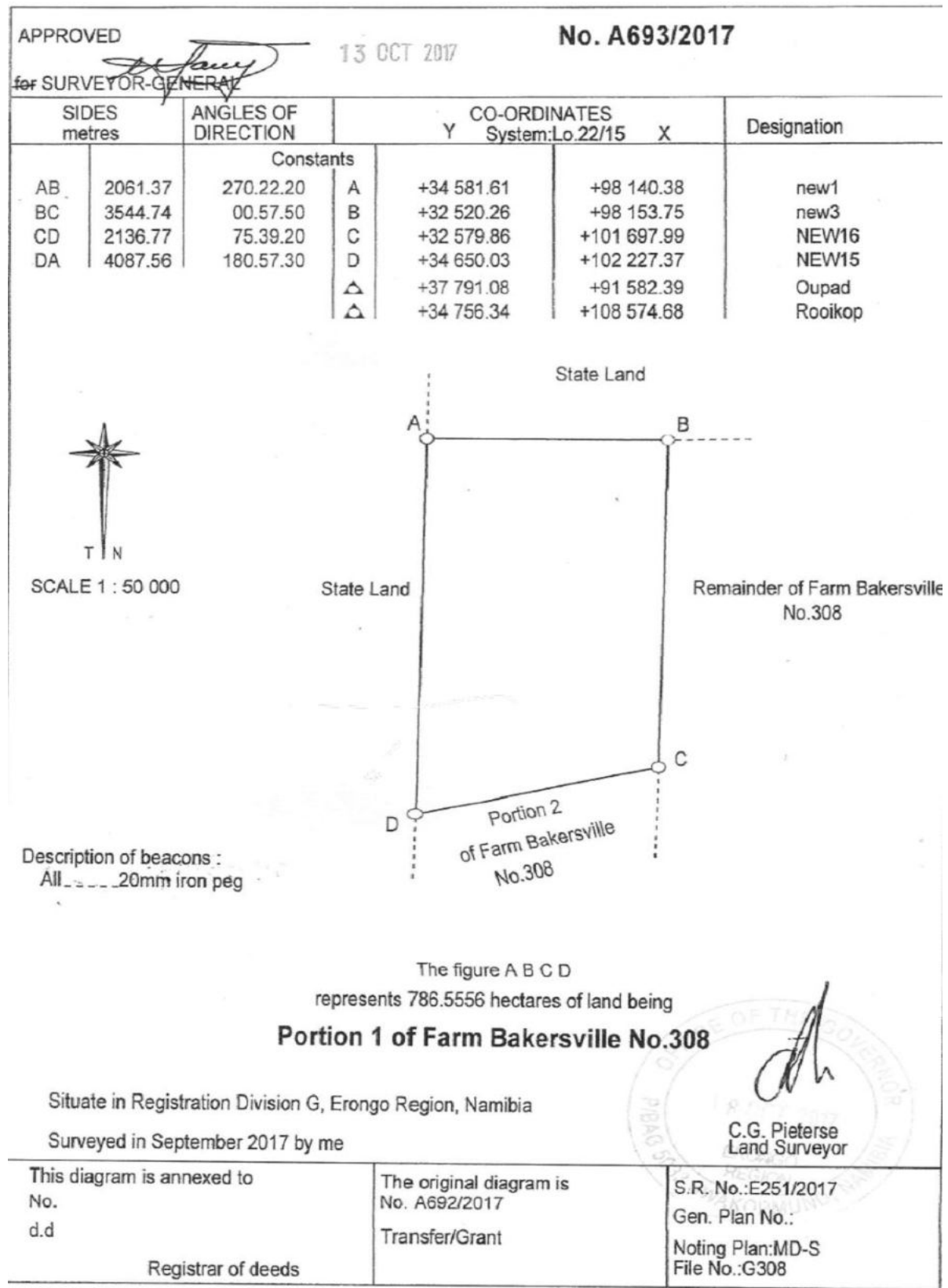


Figure 5: Farm Bakersville No. 309 Layout Plan from the Land Surveyor, September 2017

FiPortion 1 of Farm Bakersville No. 308

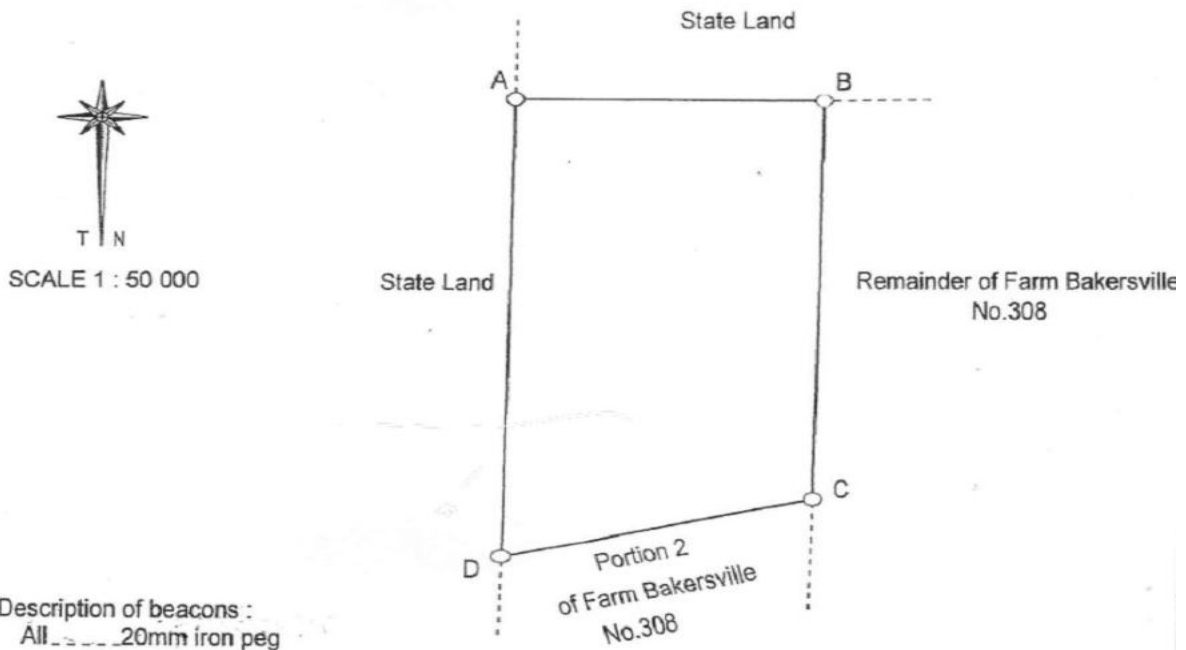
APPROVED

for SURVEYOR-GENERAL

13 OCT 2017

No. A693/2017

SIDES metres	ANGLES OF DIRECTION	Constants	CO-ORDINATES System:Lo.22/15		Designation	
			Y	X		
AB	2061.37	270.22.20	A	+34 581.61	+98 140.38	new1
BC	3544.74	00.57.50	B	+32 520.26	+98 153.75	new3
CD	2136.77	75.39.20	C	+32 579.86	+101 697.99	NEW16
DA	4087.56	180.57.30	D	+34 650.03	+102 227.37	NEW15
			△	+37 791.08	+91 582.39	Oupad
			△	+34 756.34	+108 574.68	Rooikop



Description of beacons :
All --- 20mm iron peg

The figure A B C D
represents 786.5556 hectares of land being
Portion 1 of Farm Bakersville No.308

Situate in Registration Division G, Erongo Region, Namibia

Surveyed in September 2017 by me

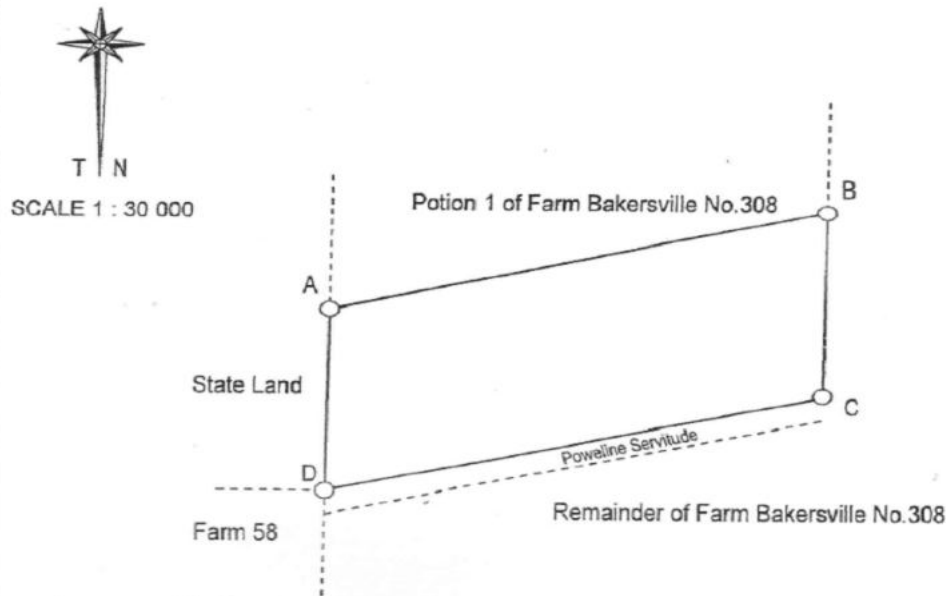
C.G. Pieterse
C.G. Pieterse
Land Surveyor

This diagram is annexed to No. d.d Registrar of deeds	The original diagram is No. A692/2017 Transfer/Grant	S.R. No.:E251/2017 Gen. Plan No.: Noting Plan:MD-S File No.:G308
--	--	---

Portion 2 of Farm Bakersville No. 308

APPROVED  13 OCT 2017 No. A694/2017
for SURVEYOR-GENERAL

SIDES metres	ANGLES OF DIRECTION	CO-ORDINATES			Designation	
		Y	System:Lo,22/15	X		
		Constants				
AB	2136.77	255.39.20	A	+34 650.03	+102 227.37	NEW15
BC	980.50	00.57.50	B	+32 579.86	+101 697.99	NEW16
CD	2134.61	75.51.30	C	+32 596.40	+102 678.33	New17N.
DA	972.62	180.57.30	D	+34 666.30	+103 199.85	DBAB
			△	+37 791.08	+91 582.39	Oupad
			△	+36 134.06	+127 437.62	Schwarzekuppe




Description of beacons :
D30mm iron peg in cairn
All others20mm iron peg

The figure A B C D
represents 201.2631 hectares of land being
Portion 2 of Farm Bakersville No.308

Situate in Registration Division G, Erongo Region, Namibia

Surveyed in September 2017 by me


C.G. Pieterse
Land Surveyor

This diagram is annexed to No. d.d Registrar of deeds	The original diagram is No. A692/2017 Transfer/Grant	S.R. No.:E251/2017 Gen. Plan No.: Noting Plan: MD-S File No.: G308
--	--	---

Figure 1: Figure 8: Descriptions of Beacons Farm Bakersville East No. 309,

