

BACKGROUND INFORMATION DOCUMENT (BID) FOR THE ENVIRONMENTAL IMPACT ASSESSMENT (EIA) FOR THE ESTABLISHMENT AND OPERATION OF A BRICKS MANUFACTURING FACILITY ON PORTION 554 AT BRAKWATER, WINDHOEK, KHOMAS REGION, NAMIBIA

Purpose of this Document

The purpose of this Background Information Document (BID) is to brief Interested & Affected Parties (I&AP's) and Stakeholders about the Environmental Assessment (EA) process being undertaken for the proposed establishment and operation of a bricks manufacturing facility on Portion 554 at Brakwater, Windhoek, Khomas Region.

The BID provides an opportunity for I&AP's to register for the EA process and to submit any comments or issues regarding the proposed project.

Background Information

Midma Investment cc, hereafter referred to as the proponent is of the intention to undertake the following activities:

- **Environmental Impact Assessment for the establishment and operation of a bricks manufacturing facility on Portion 554 at Brakwater, Windhoek, Khomas Region, Namibia.**

In terms of the Environmental Management Act (No. 7 of 2007) and Environmental Impact Assessment Regulations (Government Notice No. 30 of 2012), the following listed activities in the table below were triggered by the proposed project:

Table 1: List of triggered activities identified in the EA process applicable to the proposed project.

Activity description and No(s):	Description of relevant Activity	The portion of the development as per the project description that relates to the applicable listed activity
Activity 5.1 (a) (Land use and development Activities)	The rezoning of land from residential use to industrial or commercial use.	The proposed project includes; rezoning of land from residential to industrial or commercial use.
Activity 4 (Forestry Activities)	The clearance of forest areas, deforestation, afforestation, timber harvesting or any other related activity that requires authorisation in term of the Forest Act, 2001 (Act No. 12 of 2001) or any other law.	The proposed project includes; clearing a piece of land to erect a bricks manufacturing facility.

Midma Investment cc has commissioned this EIA and appointed Environclim Consulting Service to undertake the necessary activities to enable an application for the Environmental Clearance Certificate (ECC) with the office of Environmental Commissioner as prescribed by the Environmental Management Act (No. 7 of 2007) and Environmental Impact Assessment Regulations (Government Notice No. 30 of 2012). In line with Regulation 21(2) of the mentioned EIA Regulations, this BID is distributed to potential I&APs as part of the consultation process for this environmental assessment process.

This Environmental Impact Assessment will therefore be undertaken to determine the potential environmental, social and economic impacts associated with the establishment and operation of a bricks manufacturing facility on Portion 554 at Brakwater, Windhoek, Khomas Region.

Development Description

Locality

The proposed site is situated on Portion 554 at Brakwater, approximately 20 Km north Windhoek, Khomas Region (see **Figure 1** below). The proposed site covers an area of approximately 300 m² and is accessible via an existing road that branch out of the B1 main road that stretches from Windhoek to Okahandja and turn off immediately to the left after Jan Japan Motors into the western direction the proposed site will be situated on the right approximately 800 meters from the tar road.

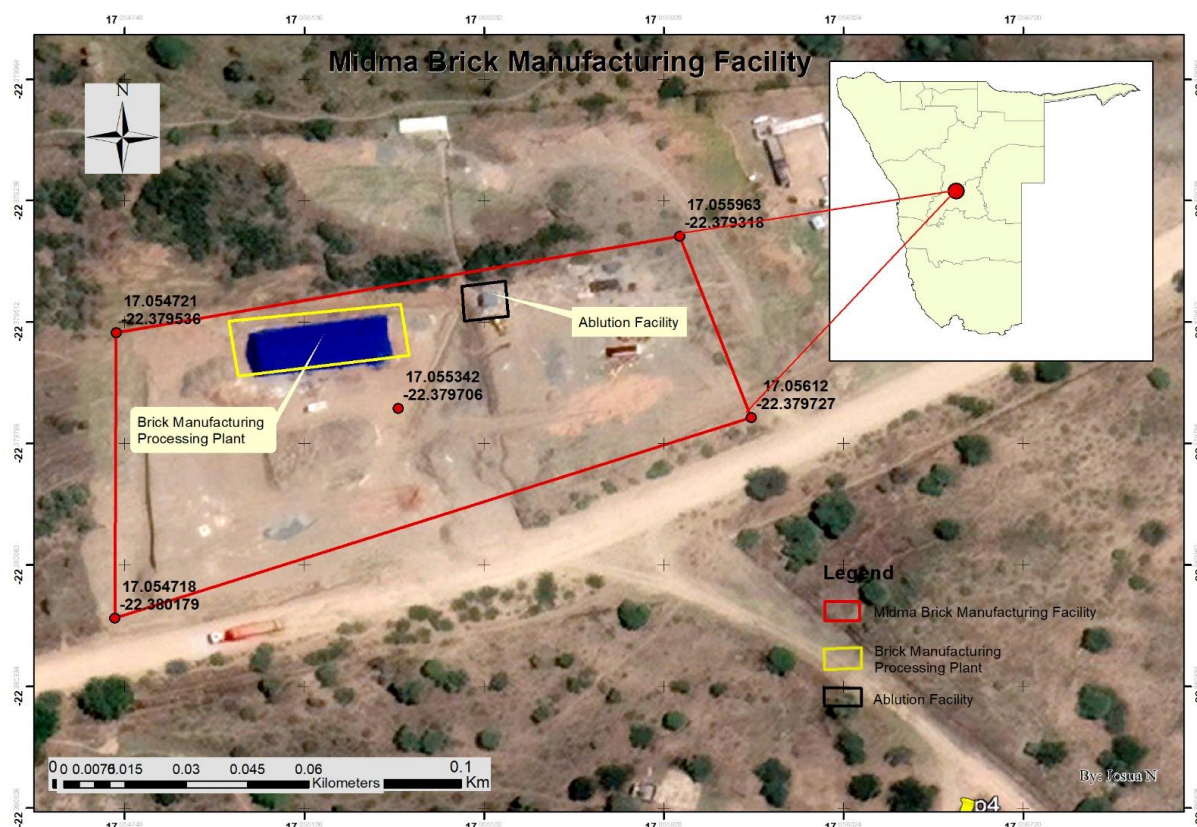


Figure 1: Location of proposed the bricks manufacturing facility on Portion 554 at Brakwater, Khomas Region (geo-reference point - 17.055342 S, 22.379706 E).

Project components

The project involves conducting an Environmental Assessment for the proposed establishment and operation of a bricks manufacturing facility on Portion 554 at Brakwater. The company intends to establish and operate a brick manufacturing facility that optimised hydraulic machines designed to manufacture super bricks, pavers, interlocks and other concrete materials. The company has a vast experience in bricks production and it supplies numerous construction projects in Windhoek including some of the national projects funded by the government. Due to the demand of bricks which has been prompted by the increase in civil infrastructural development in Windhoek, the company intends to increase its bricks production in order to meet customer demands and avoid delays of construction projects including national projects. About 7500 bricks will be produced on daily basis during the initial phases of the project with the option of increasing the daily production if the demand escalates. The water requirement for the project is anticipated to be in a range of 5 000 litres per month. However, water will be used sparingly and water recycling initiatives will be implemented. Water will be sourced from the existing NamWater pipeline that supply water to the Brakwater area, while electricity will be sourced from existing power infrastructure at the site.

The planned bricks manufacturing project will contribute immensely to the economy of Windhoek. The project will employ about 30 people. These will include; machine operator, mechanic, administration and packers. The lifespan of the project is not yet determined and will entirely rely on the demand for bricks and civil infrastructural development in Windhoek and nearby towns and the demand for bricks is believed to continue escalating as result of the expansion of the City. The project is estimated to cost around 7 million Namibian dollars. The proponent has provisional contracts that requires a high number of bricks and this will only be realized if the brick manufacturing facility is operational. As an effort to enhance capacity development the project will provide internship opportunities to the youth interested in bricks manufacturing.

The Natural Environment

The proposed area is falling within the highland savanna and the surrounding area is characterised by *Dichrostachys cinerea*, *Acacia (Senegalia) mellifera* and *Catophractes alexandri*. Due to massive anthropogenic development in the area, the area does not harbour wildlife resources.

The area has an average annual rainfall of 300 mm – 350 mm. The average minimum temperatures are 2°C - 4°C, whereas the highest average maximum temperature in the area is 28°C to 30°C (Mendelsohn, 2003).

Environmental Assessment Process;

- Establishing environmental risks of the proposed project

- Establishing mitigation measures
- Preparing the Draft Scoping Environmental Report (DSER) and Draft Environmental Management Plan (EMP)
- Public reviewing of Draft Scoping Environmental Report (DSER) and Draft Environmental Management Plan (EMP)
- Preparing the final Scoping Environmental Report (DSER) and Environmental Management Plan (EMP) and submitting to MEFT
- Awaiting decision from Authorities
- Communicating decision to Interested & Affected Parties
- Availing opportunities to Appeal.

Pre-identified impacts

- Potential impact on biodiversity both fauna and flora.
- Potential ground and surface water pollution
- Potential impacts to human health
- Noise pollution
- Dust and noise pollution
- Impact on air quality.
- Visual impact – sense of place
- Waste management
- Vulnerability to risks arising from climate variability and change

Detailed Consultation Process

The Environmental Assessment process involves interaction with people who are interested in, or who could be affected by the proposed establishment and operation of a bricks manufacturing facility on Portion 554 at Brakwater, Windhoek, Khomas Region. As part of this process the comments and responds forms will be disseminated to all Interested and Affected Parties to further obtain inputs into the project.

Key stakeholder's participation process gives you the opportunity to:

- Obtain information about the proposed project
- Raise any environmental issues relating to the project

How can you be involved?

- By responding to the circulated comment and responds forms
- By registering as an I&AP, for your name to be added to our register list
- Submitting your comments or requests in writing.

A public meeting will be held as detailed below. All registered I&APs are encouraged to attend.

Meeting venue: Portion 554, Brakwater

Date: Friday, 22th September 2023

Time: 10h00

All interested has been scheduled as follows and all registered I&APs are encouraged to attend.

All Interested and Affected Parties are encouraged to participate by providing their comments and suggestions regarding the EA for establishment and operation of a bricks manufacturing facility on Portion 554 at Brakwater, Khomas Region on or before **Friday 13th October 2023**. For further information, or concerns, I&APs can complete the register below:

Registration and Comments

Participant Name:	Organization/Affiliations:
Position:	Telephone:
Fax:	E-Mail:

Postal Address:
Comments/Suggestions and Questions:

Please fill in the particulars and return the completed document to be registered as an Interested & Affected Parties (I&AP) to:

EnvironClim Consulting Services Mobile: +264 815955643 E-Mail: environclim@gmail.com	
----------------------------------------------------------------------------------------------------------------------------------------------	---------------------------------------------------------------------------------------