

Environmental Compliance Consultancy (Pty) Ltd
PO Box 91103 Klein Windhoek Namibia
info@eccenvironmental.com
www.eccenvironmental.com
+264 81 669 7608



ECC
ENVIRONMENTAL
COMPLIANCE CONSULTANCY

ECC-88-398-LET-25-D

09 May 2023

COPY

Ministry of Mines and Energy
Directorate of Mines
Private Bag 13297
Windhoek
Namibia

RECEIVED BY OFFICIAL STAMP

Signature: _____

Date: / /

FOR ATTENTION: MS ISABELLA CHIRCHIR – MINING COMMISSIONER (MINISTRY OF MINES AND ENERGY)

MR TIMOTEUS MUFETI – ENVIRONMENTAL COMMISSIONER (MINISTRY OF ENVIRONMENT, FORESTRY AND TOURISM)

RE – SUBMISSION OF THE FINAL SCOPING REPORT PLUS IMPACT ASSESSMENT REPORT FOR THE EXPLORATION OF BASE AND RARE METALS, INDUSTRIAL MINERALS AND PRECIOUS METALS ON EPL 7973, 8050 and 8051, KHOMAS REGION (APP – 00795, APP-00796 and APP-00797 respectively)

Dear Mr Timoteus Mufeti,

Environmental Compliance Consultancy has been engaged by Votorantim Metals Namibia (Pty) Ltd to conduct and environmental and social impact assessment for the exploration of base and rare metals, industrial materials, and precious metals on EPL 7973 (APP – 00795), 8050 (APP-00796) and 8051 (APP-00797).

The draft scoping report plus impact assessment, environmental management plan (EMP) and appendices were submitted for public review to registered I&APs for a period of seven days from the 25th of April to the 2nd of May 2023.

In terms of Section 32 (1) of the Environmental Management Act, (EMA) No. 7 of 2007 ECC hereby submits the final scoping report plus impact assessment, environmental management plan (EMP) and appendices (in hardcopy) to you as the competent authority for your review and record of decision.

The report plus the appendices can also be accessed via our website:

<https://eccenvironmental.com/download/the-proposed-exploration-activities-on-epls-79637973-8050-8051-for-base-and-rare-metals-and-industrial-minerals-and-precious-metals-hardap-khomas-region-namibia/>

Should you or your office require our assistance with the details in this letter or report, please do not hesitate to contact us; we will gladly assist.

We look forward to hearing from you at your earliest convenience.

Yours sincerely,

Stephan Bezuidenhout
stephan@eccenvironmental.com



Jessica Bezuidenhout-Mooney
jessica@eccenvironmental.com

COPY

Form 1

Document number: ECC-88-398-FOR-03-A

Ministry Reference: APP - 0010408

REPUBLIC OF NAMIBIA

ENVIRONMENTAL MANAGEMENT ACT, 2007 (Section 32)

APPLICATION FOR ENVIRONMENTAL CLEARANCE CERTIFICATE

PROJECT REGISTRATION



PART A: DETAILS OF APPLICANT

1. Name: (person or business):

Votorantim Metals Namibia (Pty) Ltd

2. Business Registration / Identity No.:

Votorantim Metals Namibia (Pty) Ltd:

2013/0251

Environmental Compliance Consultancy: CC/2013/11404

3. Correspondence Address:

Office Manager – Yvonne Hass

+264 61 221 016

ext.yvonnenh@nexaresources.com

P O Box 97957

Maerua Mall

Windhoek

4. Name of Contact Person:

Mr. Stephan Bezuidenhout

5. Position of Contact Person:

Principal Environmental Practitioner

6. Telephone No.:

+264 81 669 7608

7. Fax Number:

NA

8. E-mail Address: (if any)

info@eccenvironmental.com

PART B: SCOPE OF THE ENVIRONMENTAL CLEARANCE CERTIFICATE

1. The environmental clearance certificate is for

The proposed exploration of rare and base metals, industrial minerals and precious and semi-precious metals on EPL 8050 within the Khomas Region, Namibia.

Listed activities triggered by the project include:

LISTED ACTIVITY	EIA SCREENING FINDING
<p>MINING AND QUARRYING ACTIVITIES</p> <p>(3.1) The construction of facilities for any process or activities which requires a licence, right or other forms of authorisation, and the renewal of a licence, right or other forms of authorisation, in terms of the Minerals (Prospecting and Mining Act), 1992.</p> <p>(3.2) Other forms of mining or extraction of any natural resources whether regulated by law or not.</p> <p>(3.3) Resource extraction, manipulation, conservation, and related activities</p>	<ul style="list-style-type: none"> The proposed project has obtained an EPL from MME; now requires an environmental clearance from DEAF/MEFT for the search of rare and base metals, industrial minerals and precious and semi-precious metals. The proponent will be undertaking exploration activities on EPL 8050, which will include geological mapping, geochemical and geophysical surveys and possibly drilling.
<p>WASTE MANAGEMENT, TREATMENT, HANDLING AND DISPOSAL ACTIVITIES</p> <p>(2.1) The construction of facilities for waste sites, treatment of waste and disposal of waste.</p> <p>(2.3) The import, processing, use and recycling, temporary storage, transit or export of waste.</p>	<ul style="list-style-type: none"> Waste generated which will be mainly solid waste and general waste during the exploration phase will be removed by a skip and will be disposed of at the nearest landfill site. Waste will be recycled, to the extent possible. A portable toilet, long drop hole for a toilet or chemical toilets will be used during exploration activities by the diamond drill crew.
<p>FORESTRY ACTIVITIES</p> <p>(4.) The clearance of forest areas, deforestation, afforestation, timber harvesting or any other related activity that requires authorisation in term of the Forest Act, 2001 (Act No. 12 of 2001) or any other law.</p>	<ul style="list-style-type: none"> Limited vegetation clearing may be required for tracks and survey access creation, and possibly for the set up for survey and drilling teams' field camps. Clearing of large trees will be avoided.
<p>WATER RESOURCE DEVELOPMENTS</p> <p>(8.1) The abstraction of ground or surface water for industrial or commercial purposes.</p>	<ul style="list-style-type: none"> For the drilling of exploration boreholes, ground water may need to be abstracted, or water will be sourced.
<p>HAZARDOUS SUBSTANCE TREATMENT, HANDLING AND STORAGE</p> <p>(9.2) Any process or activity which requires a permit, licence or other form of authorisation, or the modification of or changes to existing facilities for any process or activity which requires an amendment of an existing permit, licence or authorisation or which requires a new permit, licence or authorisation in terms of a law governing the generation or release of emissions, pollution, effluent or waste.</p>	<ul style="list-style-type: none"> Portable chemical toilets, long drop hole for toilet will be used during the exploration activities. Portable toilets, long drop holes for toilets, or chemical toilets will be used during the exploration activities. Bulk fuel may be required for the onsite generation of electricity, and for refuelling the prospecting crews and fleet. Consumer installation certificates are required for bulk fuel storage and dispensing. Smaller volumes of hazardous chemicals

	(oil, grease, diesel etc.) will be stored in drip trays to avoid contamination/pollution.
--	---

2. Details of the activity(s) covered by the environmental clearance certificate:

Title of activity: Exploration activities on EPL 8050 for base and rare metals, industrial minerals, and precious and semi-precious metals in the Khomas Region, Namibia

Nature of activity:

Votorantim Metals Namibia (Pty) Ltd proposes the exploration of base and rare metals, industrial minerals and precious and semi-precious metals on EPL 8050 which is comprised of different farmlands. Figure 1 below presents the locality map for EPL 8050

Scale and scope of activity:

The proposed exploration and prospecting activities will entail:

- Geological mapping
 - Revision of geological maps of the area and additional mapping where required
- Geophysical surveying
 - The collection of information on the substrata with magnetic and electromagnetic (AMT & IT) surveys to detect any mineralisation in the area
- Geochemical surveying
 - Samples of soil and rock are collected and sent for geochemical trace elements analysis to determine if sufficient quantities of a base or precious metal or industrial material are present.
- Drilling: RAB, RC and Diamond drilling
 - Holes are drilled and drill samples are collected for analysis of major and trace elements

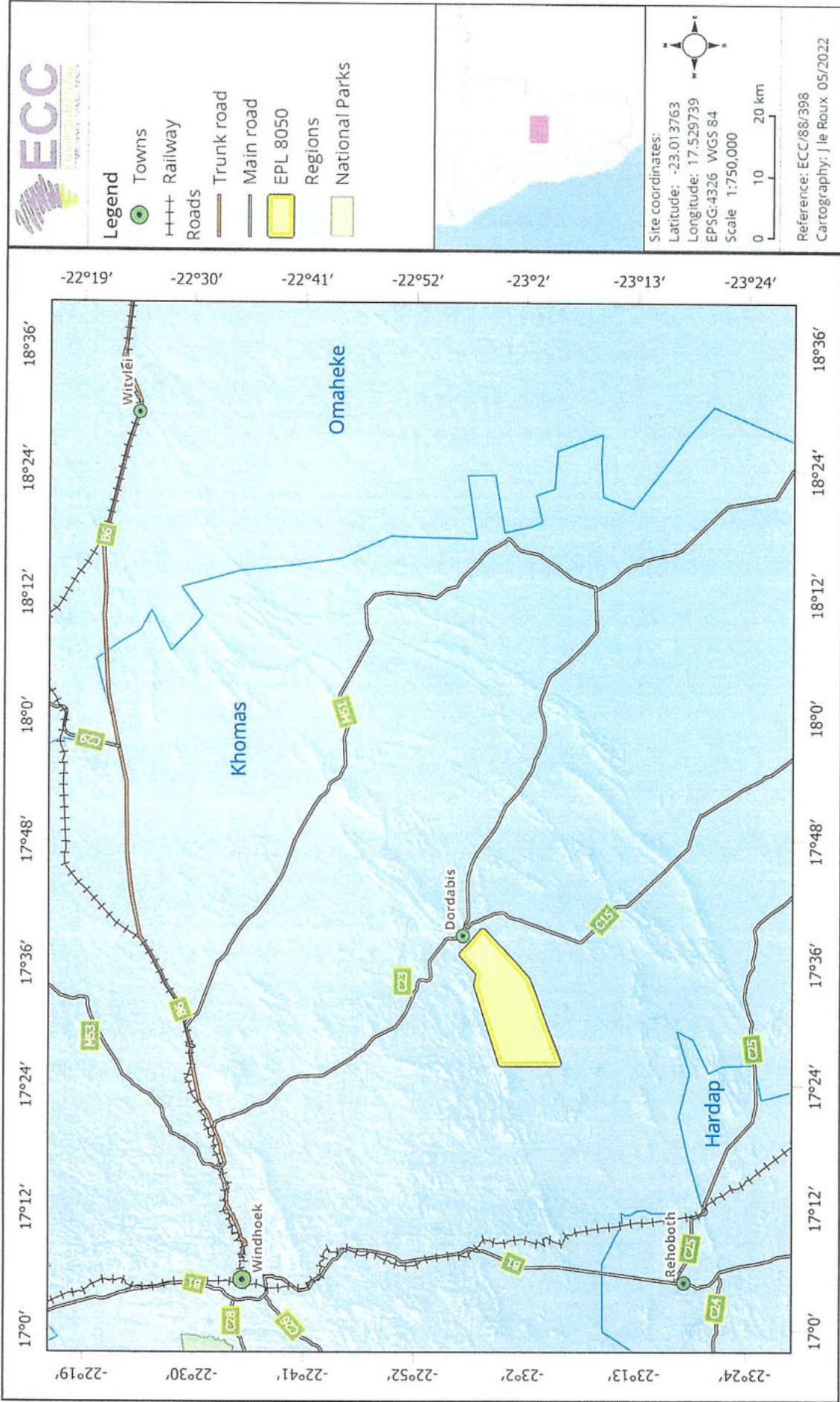


FIGURE 1 – LOCATION OF THE PROPOSED EXPLORATION ACTIVITIES ON EPL 8050, KHOMAS REGION, NAMIBIA.

PART C: DECLARATION BY APPLICANT

I hereby certify that the particulars given above are correct and true to the best of my knowledge and belief. I understand the environmental clearance certificate may be suspended, amended or cancelled if any information given above is false, misleading, wrong or incomplete.


Signature of Applicant

STEPHAN BEZUIDENHOUT
Full name in Block Letters

PRINCIPAL CONSULTANT
Position

On behalf of: Votorantim Metals Namibia (Pty Ltd

Date: 28/09/2022

