

PROPOSED CONSTRUCTION AND OPERATION OF A TELECOMMUNICATION LATTICE TOWER AT NARRAVILE SUBURB, WALVIS BAY-NAMIBIA.

PROPOSER: POWERCOM PTY LTD

ENVIRONMENTAL IMPACT ASSESSMENT-NOVEMBER 2020

INTRODUCTION

Powercom (PTY) LTD herein referred to as Powercom has identified different areas that needs improved communication alternatives due to growth in population and economic activities.

To achieve the objective of improved telecommunication connectivity, Powercom intends to establish telecommunication towers across the identified different locations. One of the identified areas that needs a telecommunication connectivity is Narraville suburb in Walvis Bay.

However, telecommunication towers cannot be constructed without prior consent from interested and affected parties as well as obtaining an Environmental Clearance Certificate for development. In this respect Junior Baiano Industrial Consultants (JBIC) cc has been appointed as an Environmental Assessment consultant to carry out an Environmental and Social Impact Assessment study to obtain an environmental clearance certificate as per the requirements of the Environmental Management Act No. 7 of 2007 and Namibian Environmental Impact Assessment Regulations of 2012 in terms of telecommunication infrastructure.

The study will incorporate biophysical, ecological and socio-economic baseline investigations relating to the proposed project. If there are any identifying negative impacts in relation to the project and Environmental and Social Management Plan will be developed for implementation during construction and operational phases of the tower.

AIMS & OBJECTIVES OF THIS EIA PROCESS

The aims of this EIA:

- To comply with Namibia's Environmental Assessment Policy, Environmental Management Act (No. 7 of 2007) with its 2012 EIA Regulations and the;
- Consult all interested and affected parties such as local residents and local authority to ensure that their inputs are taken into account;
- To assess the significance of issues and concerns raised;
- Review the legal and policy framework and its relevance to this project;
- Describe general and socio-economic environment of the project to determine impacts and suitability to the project site.
- Identify and assess impacts related to the continued operations.
- Compile an Assessment Report and Management Plan (EMP) which includes recommendations and methods to minimize the identified negative environmental impacts of the proposed project.
- To identify existing environmental conditions and associated environmental sensitivities within and adjacent to the project area that may potentially be affected, i.e. Environmental sensitivity and monitoring procedures.

THE PUBLIC PARTICIPATION PROCESS

The Public Participation Process (PPP) is an integral part of the EIA process whereby it allows the public to obtain information about the proposed project, to view documentation, to provide input and voice any concerns concerning the project. The Public Participation Processes that will be undertaken will include consultation with the local authority, line ministries, government extension offices, owners of neighboring properties and other I&AP's living around the proposed area.

During the meeting participants will be availed an opportunity to comment, ask questions and raise any concerns be it environmental or social regarding the proposed project. Comments will be recorded and considered in the Environmental Assessment report that will be submitted to the Ministry of Environment for review

PROJECT DESCRIPTION

The applicant, Powercom Pty Ltd intends to erect and operate a telecommunication tower at Narraville suburb in Walvis Bay, Namibia. The development will include the following:

The project entails the construction of an 20m Guyed mast within the footprint size of a 20m x 20m area and a support container.

The site is to accommodate TN Mobile service and other service providers.

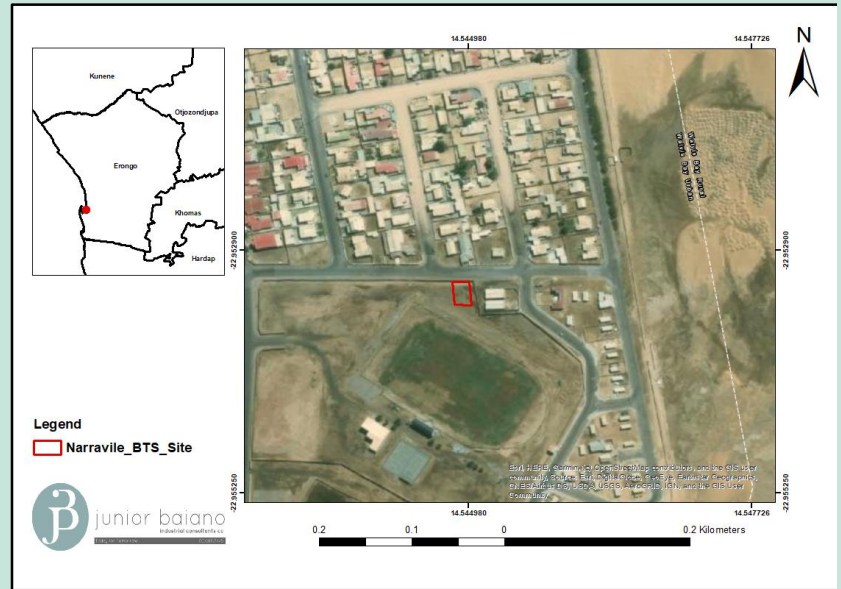
Proposed tower position:
-22° 57' 13.0_ 14° 32' 42.0

The structure will be fenced to limit public access to it. The base station will be a secured building and sufficient precaution will be made to prevent access to the antenna support structure. Access to the area will be strictly controlled through a locked gate.

PROJECT LOCATION

The project site is located in Narraville, adjacent to the Narraville Rugby Sports field, Walvis Bay-Namibia. The exact project site shown below:

Figure1: Site Locality Map



ANTICIPATED PROJECT IMPACTS

Potential Impacts	Assessment to be Undertaken
Negative Impacts	
Land use Change (Aesthetic value)	baseline assessment
Impacts on fauna and Flora	JBIC EIA Team Vertebrate fauna (wildlife) and flora (vegetation) specialist assessment If there is need for specialist Assessment, the consultation process will Inform.
Impacts on surface and groundwater resources	JBIC EIA Team baseline assessment
Health and Safety hazards	JBIC EIA Team baseline assessment
Cumulative impacts of the project Operation	JBIC EIA Team baseline assessment
Positive Impacts	
Revenue generation	JBIC EIA Team baseline assessment
Land rehabilitation	JBIC EIA Team baseline assessment
Employment creation	JBIC EIA Team baseline assessment

HOW TO PARTICIPATE?

This Public Consultation process forms an important component of the Environmental Assessment process. It is defined in the EIA Regulations (2012), as a “process in which potential interested and affected parties are given an opportunity to comment on, or raise issues relevant to, specific matters” (S1).

You can participate through the following:

- Responding to the newspaper adverts for public meeting, availability of scoping report and decision made by MET.
- A Public meeting will be conducted as follows:

Date: 20 November 2020

Venue: Narraville Rugby Field

Time: 1400HRS

OUR CONTACT DETAILS.....

You can send all your comments and enquiries to the following:

Mr Nghiyolwa, Fredrich
Tel: +264 (0) 81 147 2029
Email: fredrich@jbic.com.na/JuniorB200581@gmail.com



**ENVIRONMENTAL IMPACT ASSESSMENT PROCESS FOR THE PROPOSED
CONSTRUCTION AND OPERATION OF A TELECOMMUNICATION LATTICE TOWER AT
NARRAVILE SURBURB, WALVIS BAY-NAMIBIA.**

KINDLY COMPLETE THIS FORM IN DETAIL AND RETURN TO:

Junior Baiano Industrial Consultants cc
PO Box 23537
Windhoek
Tel: 061 219 773
Cell: 0811472029
Email Address: fredrich@jbic.com.na

Personal Details

Name & Surname.....
Postal Address..... Email

Town.....

What is your main area of interest regarding the proposed development?
.....
.....
.....
.....
.....

Do you have any points of concern or support regarding the proposed project? If "yes", please briefly list these in point format:

YES / NO

.....
.....
.....
.....

Should the project go ahead? If "no" please state reasons why:

YES / NO

.....
.....
.....
.....
.....