

**ENVIRONMENTAL ASSESSMENT AND MANAGEMENT PLAN
FOR A CONSUMER FUEL INSTALLATION ON ERF W4589, IN THE
INDUSTRIAL AREA OF WALVIS BAY**

BACKGROUND INFORMATION DOCUMENT



Prepared by



Prepared for



August 2023

1 INTRODUCTION

Corridor Logistics (Pty) Ltd (the Proponent) runs a logistics operation on erf W4589, at the corner of Ben Amathila and Johannes Nampala Streets, in the industrial area of Walvis Bay (Figure 1). In order to support day to day operations, it is their intention to add a consumer fuel installation to the erf. The consumer fuel installation will ensure a reliable supply of diesel for their own fleet of transport vehicles is available. The consumer fuel installation will adhere to the requirements of the Petroleum Products Act, specifically with regard to spill control measures to protect the environment.

The Proponent has requested Geo Pollution Technologies (Pty) Ltd (GPT) to apply for an environmental clearance certificate (ECC) for the consumer fuel installation. The ECC is required as per the Environmental Management Act No. 7 of 2007 (EMA). As part of the ECC application, an environmental assessment report and environmental management plan (EMP) will be submitted to the Ministry of Environment, Forestry and Tourism's Directorate of Environmental Affairs (DEA).

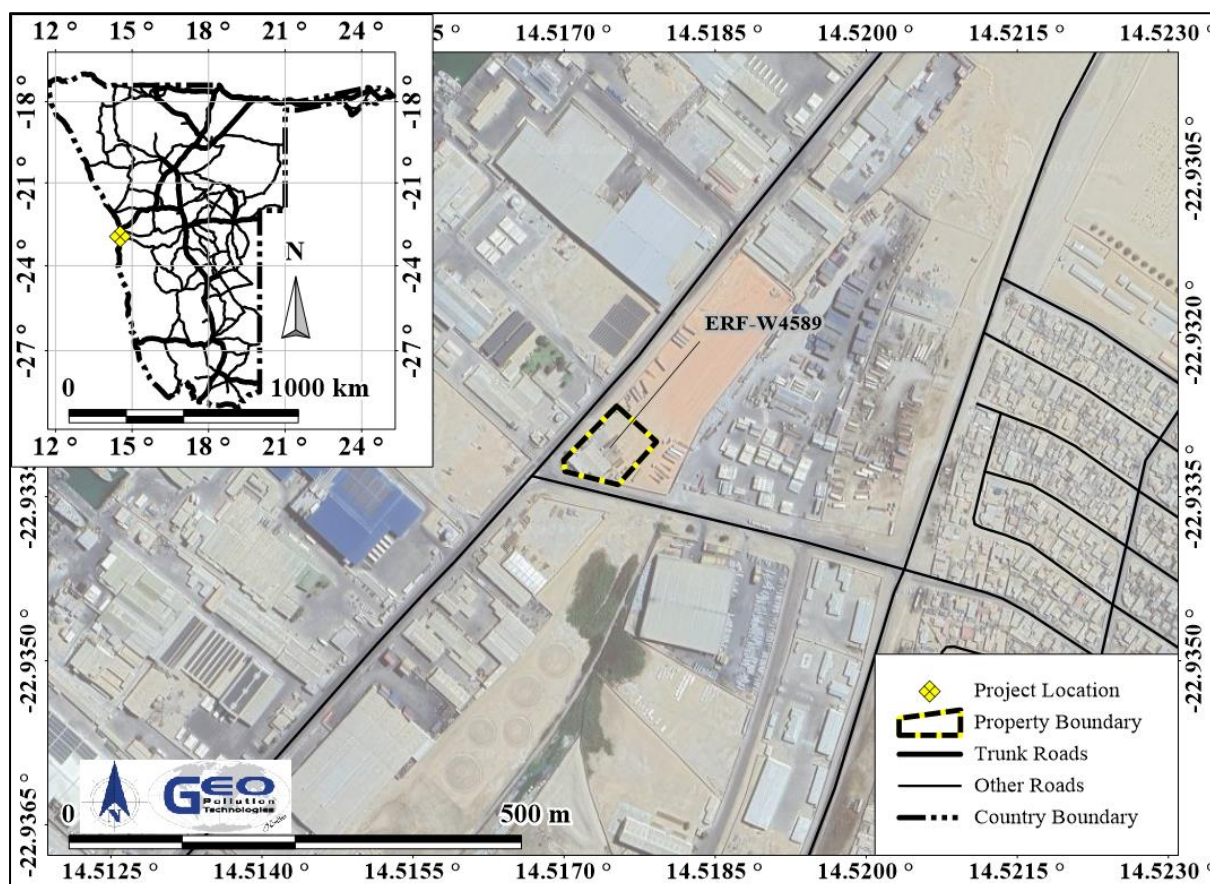


Figure 1 Project location

2 PURPOSE OF THE BID

With this background information document (BID), GPT aims to provide the DEA, authorities and interested and affected parties with information about the facility, and to register the ECC application with the Ministry of Mines and Energy and in the DEA.

3 PROJECT DESCRIPTION

Activities considered for the assessment have been divided into the following phases: planning, construction and maintenance, operational and a decommissioning phases. A brief outline of expected activities for each phase is detailed below.

3.1 PLANNING PHASE

Continuously during construction and operations, and prior to possible future decommissioning activities at the facility, it is the responsibility of the Proponent to ensure they are and remain compliant with all legal requirements. The Proponent must also ensure that all required management measures are in place prior to, and during all phases, to ensure potential risks and impacts are minimised. Typical planning activities include:

- ◆ Where not in place, obtain permits and approvals from local and national authorities including the Ministry of Mines and Energy (consumer licence).
- ◆ Ensure correct zoning and subdivision of the property, if applicable.
- ◆ Make provisions to have a health, safety and environmental coordinator to implement the EMP.
- ◆ Ensure provisions for a fund to cater for restoration or rehabilitation activities in the event of environmental incidents or pollution.
- ◆ Ensure all appointed contractors and employees enter into an agreement with the Proponent which includes adherence to relevant sections of the EMP.
- ◆ Maintain a reporting system to report on aspects of construction and maintenance, operations and decommissioning as outlined in the EMP. This is a requirement of the DEA.

3.2 CONSTRUCTION AND MAINTENANCE

The Proponent plans to make use of a 69 m³ containerised diesel tank. Such tanks are aboveground tanks, which are self-bunded and thus allows for easy installation and decommissioning while still ensuring protection of the environment. Namibian law however still requires all fuel installations to be constructed and maintained according to South African National Standards (SANS) 10089 and 10131, or better. As such, all surfaces where fuel will be handled (i.e. filling of the containerised tank and refuelling of fleet vehicles) must be covered in concrete and have spill catchment traps. This will prevent fuel from entering the environment in case of spills and leaks.

Construction activities will entail the installation of the tank on a level surface and the casting of concrete spill slabs where fuel will be offloaded and dispensed. During operations, maintenance and minor repairs will be performed on infrastructure as required. This may include painting, servicing and replacement of parts and equipment.

3.3 OPERATIONAL PHASE

Normal operations associated with a consumer fuel installation will take place. This involve the receipt of diesel from road tankers, storage of the fuel in the aboveground storage tank, and dispensing of fuel to operational and fleet vehicles. Regular tank dips and reconciliations will be performed to ensure there are no product losses and that fuel deliveries are scheduled on time. Administrative tasks, site security and cleaning of the premises will take place on a daily basis, to ensure the effective operations of the facility.

3.4 DECOMMISSIONING PHASE

Decommissioning of the entire facility is not foreseen during the validity of the ECC. Decommissioning will however be assessed, since activities like the removal of the old infrastructure during maintenance activities forms part of decommissioning. Where decommissioning occur, rehabilitation of the area may be required. Decommissioning will entail partial or complete removal of all infrastructure. After decommissioning, any pollution present on the site must be removed or remediated.

3.5 PRELIMINARY IDENTIFIED IMPACTS

During the preparation of the environmental assessment and EMP, all components of the environment will be considered. However, only those components which are, or may be, significantly impacted, or are deemed to be sensitive, will be assessed. These include the following:

- ◆ Human component (employee and visitor health and safety)
- ◆ Infrastructure (aesthetics, fire, integrity, damage to services, etc.)
- ◆ Neighbours (noise, aesthetics, waste, traffic)
- ◆ Groundwater, surface water and soil (hydrocarbon spills, waste, pollutants)
- ◆ Ecosystem and biodiversity (pollutants, bright lights)
- ◆ Socio economic characteristics (employment, training, skills, revenue)

4 PUBLIC CONSULTATION

Public consultation is an integral part of all environmental assessments. Geo Pollution Technologies thus invites all interested and affected parties (IAPs) to provide in writing, any issues and suggestions regarding the project. This correspondence must include:

- ◆ Name and surname
- ◆ Organization represented or private interest
- ◆ Position in the organization
- ◆ Contact details
- ◆ Any direct business, financial, personal or other interest which you may have in the approval or refusal of the application.

All contributions become public knowledge and will be included in the environmental assessment report. The environmental assessment and EMP reports will be circulated to all registered IAPs for review as per the EMA requirements. The comments, inputs and suggestions will also be submitted to the DEA along with how any issues have been addressed in the environmental assessment.

The public participation process will remain ongoing during the environmental assessment. However, all comments and concerns should be provided to GPT timeously, to ensure incorporation into the final report. For any additional information the project team may be contacted at:

