
BACKGROUND INFORMATION DOCUMENT (BID)



PROPOSED OPERATION OF PORTION 1 OF FARM NAMIB FONTEIN 91 AS A GUEST FARM, KARIBIB DISTRICT, ERONGO REGION

August 2023

PROJECT INFORMATION

Project Title: Operation of Portion 1 of farm Namib Fontein 91 as a Guest farm

PROPOPONENT

Living Adventure Tours cc

CC/2008/2789

P. O. Box 1271, Swakopmund

Email: bgroup@burgersafrica.com

Cell: 0812208772

ENVIRONMENTAL ASSESSMENT PRACTITIONER (EAP)



Green Gain Consultants cc

P. O. Box 5303

Walvis Bay

1. INTRODUCTION AND BACKGROUND

Green Gain Consultants (GGC) has been appointed to undertake an Environmental Impact Assessment (EIA) for the proposed operation of Portion 1 of the farm Namib Fontein 91 as a Guest Farm.

Guest farms are family run (mostly five rooms) and are geared towards the independent traveler in areas in which one normally doesn't find large numbers of tourists or buses.

The purpose of the Background Information Document (BID) is to provide a brief description of the proposed activities and to enable Interested and Affected Parties (I&APs) to register and participate in the EIA process, as well as comment on the environmental, social, and economic aspects relating to the project.

As guided by the EIA regulations, the Public Participation Process (PPP) entails notification of the proposed project via Newspaper adverts, site notices, and distribution of the BID, EIA Scoping Report (ESR), and Environmental Management Plan (EMP) I&AP.

To register as an interested or affected party and/or provide comments on the proposed projects/activities, please send your communication to: info@greengain.com.na or call 0811422927.

You can also use the attached Comment form.

The BID contains:

- a) *Project location.*
- b) *Brief description of the proposed projects/activities*
- c) *The Public Participation Processes (PPP), as guided by the EIA regulations of 2012;*
- d) *Guidelines for stakeholder participation during the EIA process.*

2. PROJECT DESCRIPTION

2.1 Locality

Farm Namib Fontein 91 measures approximately 9700ha in extent and is located about 40km southeast of Arandis in the Erongo region.



Figure 1: Locality of the map

(See Appendix A for the detailed locality map)

2.2 About the Area

The farm area falls under the arid climate and falls into southern Africa's summer-rainfall region. This region is characterized by low rainfall, extreme temperature ranges, and unique climatic factors influencing the natural environment and biodiversity. The farm landscape is made up mainly of mountain ranges, flat areas, and streams connected to the Khan River. The main vegetation of the exploration area is characterized by the mountain savanna and riparian zone along the river streams. The vegetation is dominated by a combination of flora such as *Acacia erioloba* (Kameeldoring), *Anna tree*, *Commiphora sp*, *Boscia foetida*. The farm is home to an abundance of wildlife such as *ostriches*, *impala*, *kudus*, *springbok*, *zebra*.



Figure 2: Vegetation of the area

3. PROPOSED PROJECTS / ACTIVITIES

3.1 Existing infrastructure

Currently, Farm Namib Fontein 91 is operated exclusively as a private game farm. There is a private campsite with 5 luxury suites (A) which can accommodate 10 people. There is also workers' accommodation (B) and a small site office (D). Water is sourced from boreholes and stored in above tanks (C) while energy is sourced from an overhead powerline connected to a 3-phase transformer.



Figure 3: Existing farm infrastructure

3.2 Proposed Activities

The overall objective is to convert the farm into guest farms to accommodate a number of activities as listed below.

1. General dealer / trade and re-trade of good / machinery and services
2. Restaurant / food / and liquor facilities - and self-catering
3. Rental of rooms / chalets / camping facilities / safari tents / workshop facilities
4. Guided tours and self-drive trips
5. Game-viewing trip
6. Hiking trails / bicycle trails
7. Conference facilities

4. LEGAL FRAMEWORK

In terms of the Environmental Management Act of 2007 (Act No. 7 of 2007) and the Environmental Impact Assessment Regulation (Government Notice No. 30 of 2012), the proposed guest farm activities trigger certain listed activities as follows.

Table 1: Identified list of activities in the EIA regulation concerning the proposed project.

Activity	Description of the Activity	Operation of the Activity
Guest Farm	6. Tourism Development Activities	6.1 The construction of resorts, lodges, hotels or other tourism and hospitality facilities.

5. PROCESS OF ENVIRONMENTAL IMPACT ASSESSMENT

5.1 EIA process

An EIA is a process that evaluates the biophysical and socio-economic characteristics of a proposed development and its consequences to the environment and the public at large. The EIA Process entails the assessment and description of the study area, recommended site or affected environment. The EIA further investigates and identifies potential impacts that may arise from the recommended activity.

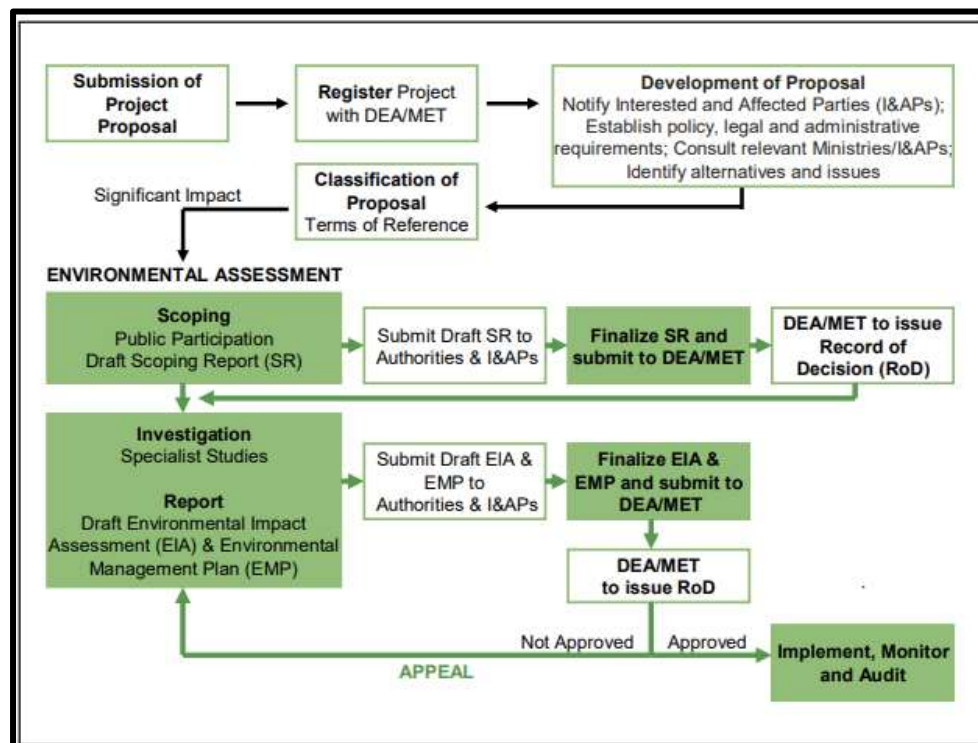


Figure 4; Namibian EIA process

5.2 Assessment of Potential impacts

Potential impacts associated with proposed activities will be assessed during the expansion/construction, operation, and maintenance phases. Some of the potential impacts to be assessed are as follow.

- Impacts to biodiversity (flora and fauna)
- Impact on Water resources
- Impact on energy resources
- Waste management
- Tourism management
- Community relations

For all identified impacts or potential impacts (real or perceived) that may occur from the proposed development, measures will be recommended to mitigate and minimize such impacts, in accordance with the EIA regulations of 2012. Mitigation measures will be developed for significant impacts and will be incorporated into the EMP.

6. STAKEHOLDERS CONSULTATION PROCESS

The public were notified through Newspaper adverts (4 x Newspaper adverts), and Public Notices were placed at the Farm gate and in the nearest towns (Swakopmund and Uusakos).



Figure 5: Copy of the Public Notice

The Public Participation Process (PPP) meeting will be scheduled at a later stage to present the Environmental Scoping Report as well as the Environmental Management plan that details the identified mitigation measures. The meeting will provide a platform for the public to comment on the proposed project. All registered IAP's shall be provided with the draft scoping and EMP reports.



