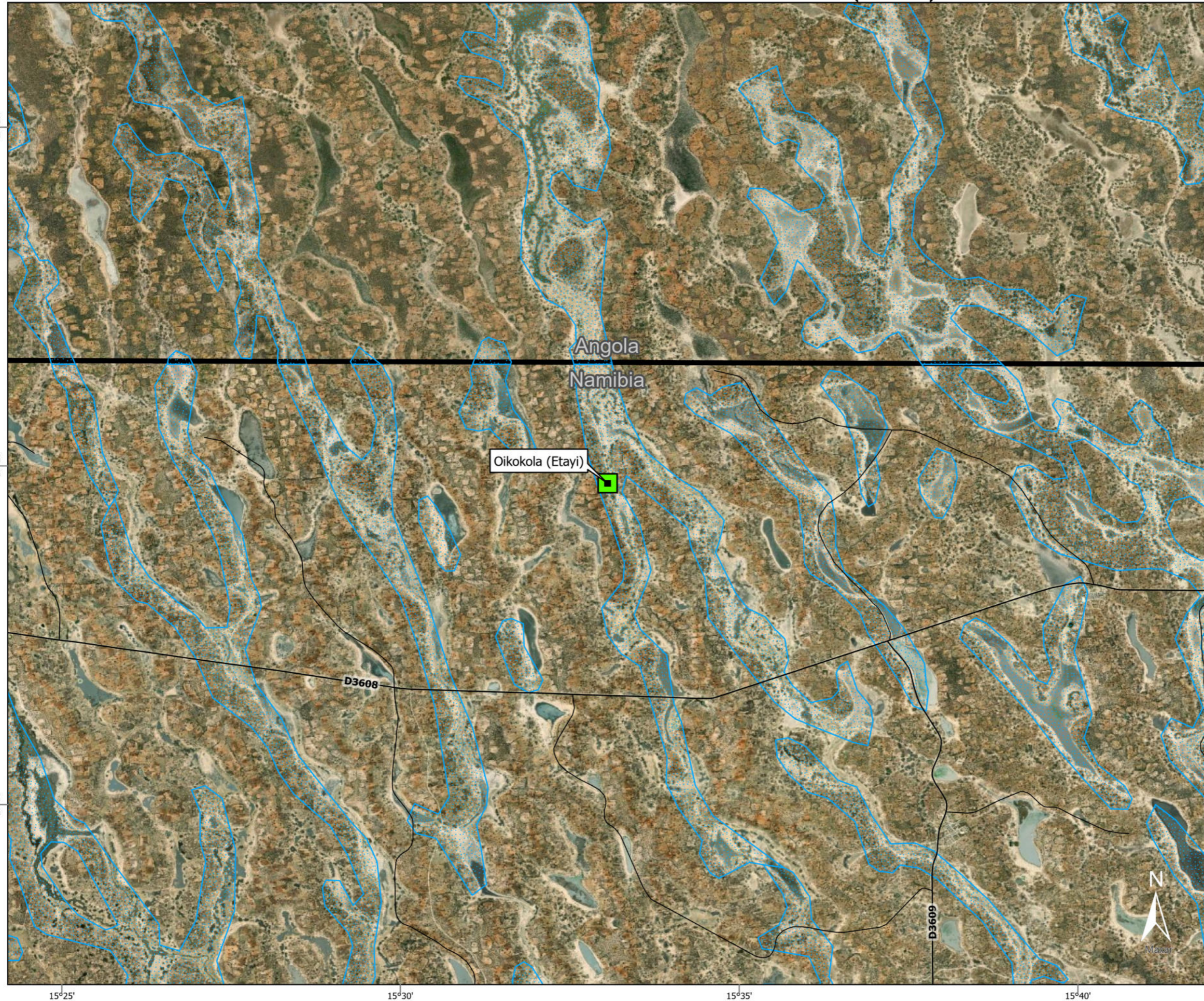
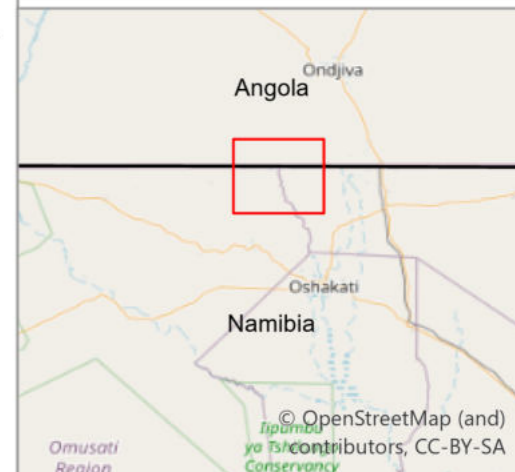


# PROPOSED POWERCOM TELECOMMUNICATION TOWERS - OIKOKOLA (ETAYI) LOCALITY MAP



## Legend

- Site Location
- Road Network**
  - Secondary Road
  - Track
- Inland Water**
  - ▨ Non-Perennial
- ▭ Country Boundary



Data Sources:  
 Esri World Imagery Basemap



FIGURE NO.: -	MAP NUMBER: 22-1081-03
DRAWN BY: N MBOKAZI GIS CONSULTANT	REVIEWED BY: V SHIKWAYA PROJECT MANAGER
DATUM: WGS84	DATE: 23 MAY 2023
PROJECTION: GEOGRAPHIC	
PROJECT: ENVIRONMENTAL IMPACT ASSESSMENT OF PROPOSED TELECOMMUNICATION TOWERS FOR 9 SITES	
CLIENT: POWERCOM	

**GCS**  
 Water & Environmental  
 Consultants

63 Wessel Road Woodmead  
 PO Box 2597 Rivonia 2128  
 South Africa  
 Tel: +27 (0) 11 803 5726  
 Fax: +27 (0) 11 803 5745  
 E-mail: jhb@gcs-sa.biz  
 www.gcs-sa.biz