

## PROPOSED INSTALLATION AND OPERATION OF A 48M LATTICE TELECOMMUNICATION TOWER AT AMWIIMBI COMBINED SCHOOL, OHANGWENA REGION, NAMIBIA

PROPONENT: MOBILE TELECOMMUNICATION LIMITED (MTC)

ENVIRONMENTAL IMPACT ASSESSMENT-AUGUST 2023

### INTRODUCTION

**Mobile Telecommunication Limited (PTY) LTD** intends to achieve the objective of improved telecommunication connectivity, and continue to expand network coverage in the remote areas of Namibia with the aim of bringing development close to the people in line with the decentralization approach. MTC intends to install and operate a 48m lattice telecommunication tower at Amwiimbi Combined School in Epembe circuit, in Ohamwiimbi Village, Ohangwena region.

In this respect Junior Baiano Industrial Consultants (JBIC) cc have been appointed to carry out an Environmental Assessment study to obtain an environmental clearance certificate as per the requirements of the Ministry of Environment, Forestry and Tourism in terms of infrastructure development.

The study will incorporate biophysical, ecological and socio-economic baseline investigations relating to the proposed project.

In terms of the Namibian environmental Impact Assessment Regulations of 2012, an Environmental Clearance Certificate is to be obtained before the project can proceed.

This is because under the Government Notice 29 of 2008, Section 10 INFRASTRUCTURE states that

1. The construction of -  
(g) Communication networks including towers, telecommunication and marine telecommunication lines and cables.

### THE PUBLIC PARTICIPATION PROCESS

The Public Participation Process (PPP) is an integral part of the EIA process whereby it allows the public to obtain information about the proposed project, to view documentation, to provide input and voice any concerns concerning the project. The Public Participation Processes that will be undertaken will include consultation with the local authority, line ministries, government extension offices, owners of neighboring properties and other I&AP's living around the proposed area.

During the meeting participants will be availed an opportunity to comment, ask questions and raise any concerns be it environmental or social regarding the proposed project. Comments will be recorded and considered in the Environmental Assessment report that will be submitted to the Ministry of Environment for review

### AIMS & OBJECTIVES OF THIS EIA PROCESS

The aims of this EIA:

- To comply with Namibia's Environmental Assessment Policy, Environmental Management Act (No. 7 of 2007) with its 2012 EIA Regulations and;
- Consult all interested and affected parties such as local residents, town council and regional council to ensure that their inputs are taken into account;
- To assess the significance of issues and concerns raised;
- Review the legal and policy framework and its relevance to this project;
- Describe general and socio-economic environment of the project to determine impacts and suitability to the project site.
- Identify and assess impacts related to the continued operations.
- Compile an Assessment Report and Management Plan (EMP) which includes recommendations and methods to minimize the identified negative environmental impacts of the proposed project.
- To identify existing environmental conditions and associated environmental sensitivities within and adjacent to the project area that may potentially be affected, i.e. Environmental sensitivity and monitoring procedures.

## PROJECT DESCRIPTION

MTC intends to construct a 48m lattice telecommunication tower at Amwiimbi Combined School in Epembe circuit, Ohamwiimbi Village. The Company anticipates that this project will increase the network connectivity and at same time expand network coverage that will bring development closer to the people in remote areas.

The network structure will consist of strips off metal crossed and fastened together with square or diamond shapes left between, used as a fence or support. The lattice tower have low weight, better shear strength and lower wind resistance than solid structures.

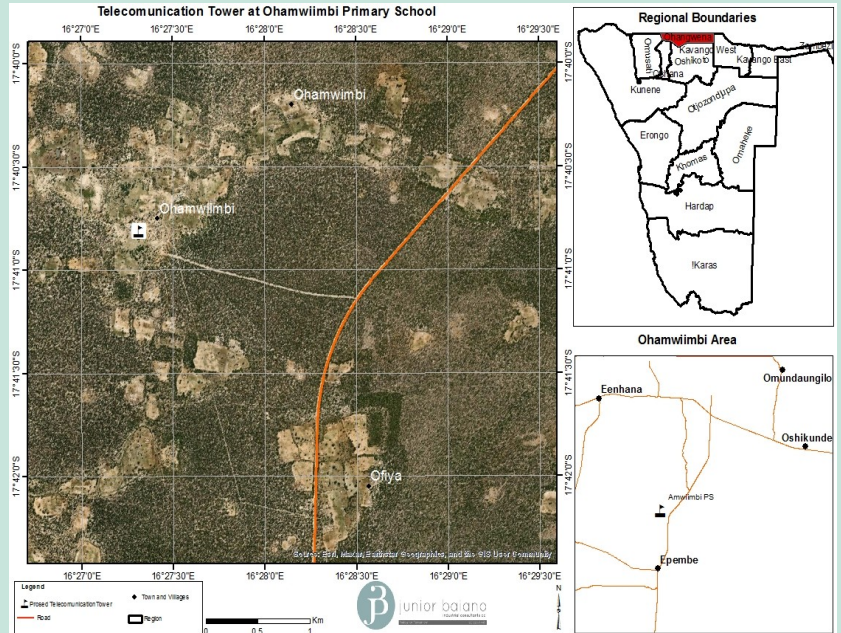
The proposed infrastructure will have minimal impacts on the natural resources, i.e. water, fauna and flora.

The operations will ensure compliance to all necessary statutory requirements

## PROJECT LOCATION

The different project site is located at Amwiimbi Combined School, in Ohamwiimbi Village in Ohangwena region

Figure1: Site Locality table



## ANTICIPATED PROJECT IMPACTS

Potential Impacts	Assessment to be Undertaken
<b>Negative Impacts</b>	
Land use Change (Aesthetic value)	baseline assessment
Impacts on fauna and Flora	JBIC EIA Team baseline assessment and If there is need for specialist Assessment, the consultation process will Inform.
Impacts on surface and groundwater resources	JBIC EIA Team baseline assessment
Health and Safety hazards	JBIC EIA Team baseline assessment
Cumulative impacts of the project Operation	JBIC EIA Team baseline assessment
<b>Positive Impacts</b>	
Revenue generation	JBIC EIA Team baseline assessment
Renewable energy	JBIC EIA Team baseline assessment
Employment creation	JBIC EIA Team baseline assessment

## HOW TO PARTICIPATE?

This Public Consultation process forms an important component of the Environmental Assessment process. It is defined in the EIA Regulations (2012), as a “process in which potential interested and affected parties are given an opportunity to comment on, or raise issues relevant to, specific matters” (S1).

You can participate through the following:

- Responding to the newspaper adverts for public meeting, availability of scoping report and decision made by MET.
- **A public meeting will be held on Wednesday, 9th of August 2023 at Amwiimbi Combined School, at 13h00.**

## OUR CONTACT DETAILS.....

You can send all your comments and enquiries to the following:

Mr. Nghiyolwa, Fredrich  
Tel: +264 (0) 81 147 2029  
Email: [JuniorB200581@gmail.com](mailto:JuniorB200581@gmail.com)



**Registration and Comments Form**

**PROPOSED INSTALLATION AND OPERATION OF A 48M LATTICE  
TELECOMMUNICATION TOWER AT AMWIIMBI COMBINED SCHOOL, OHANGWENA  
REGION, NAMIBIA**

KINDLY COMPLETE THIS FORM IN DETAIL AND RETURN TO:

Junior Baiano Industrial Consultants cc  
PO Box 23537  
Windhoek  
Tel: 061 219 773  
Cell: 0811472029  
Email Address: [JuniorB200581@gmail.com](mailto:JuniorB200581@gmail.com)

**Personal Details**

Name & Surname.....  
Postal Address..... Email .....  
Town.....

What is your main area of interest regarding the proposed development?

.....  
.....  
.....  
.....  
.....

Do you have any points of concern or support regarding the proposed project? If "yes", please briefly list these in point format:

YES / NO

.....  
.....  
.....  
.....

Should this project go ahead? If no please specify reasons below:

YES / NO

.....  
.....  
.....  
.....