

2.1. SITE SELECTION

Harambee Agri-Produce (Pty) Ltd, proposed irrigation operation is to be undertaken within the Hardap Green Scheme project area (Figure 5), corner GPS coordinates presented in (Table 3), and on a 300 Ha area situated about 10 km north of the Mariental Municipal Town. As derived from the Hardap Irrigation Scheme, the land-use in the surrounding area is mainly variant, in terms of both scale and type of crops, horticultural and agronomic operations.

The site is mainly accessible via the B1 (Trans-oranje Highway / Corridor), and then by an informal gravel road. Consideration for the site selection included but not limited to therefore, accessibility and equally the close proximity of the site to key infrastructure required to enable the sustainable operation of the proposed activity i.e. power and water supply. Other key site selection factors are the land availability, proximity to sensitive receptors, topography, risks and potential or current land use conflict.

Table 3: Corner coordinates of the proposed development site

| Corner point | Latitude | Longitude |
|------------------------|-------------|------------|
| A – Mariental - Hardap | -24.589202° | 17.959164° |
| B – Mariental - Hardap | -24.588715° | 17.963534° |
| C – Mariental - Hardap | -24.566135° | 17.972448° |
| D – Mariental - Hardap | -24.567720° | 17.957058° |

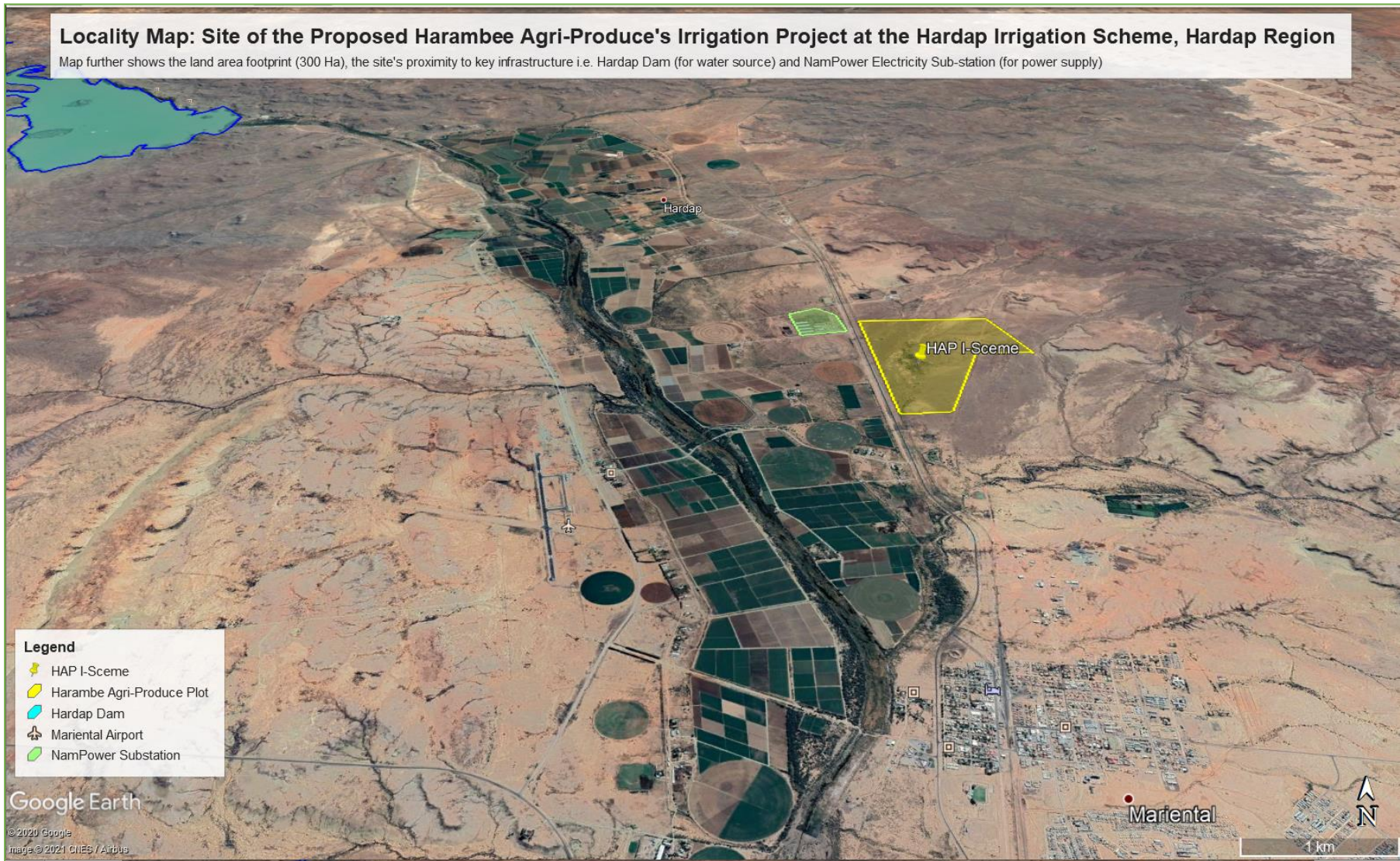


Figure 5: Site of the Proposed Harambee Agri-Produce's Irrigation Project at the Hardap Irrigation Scheme, Hardap Region

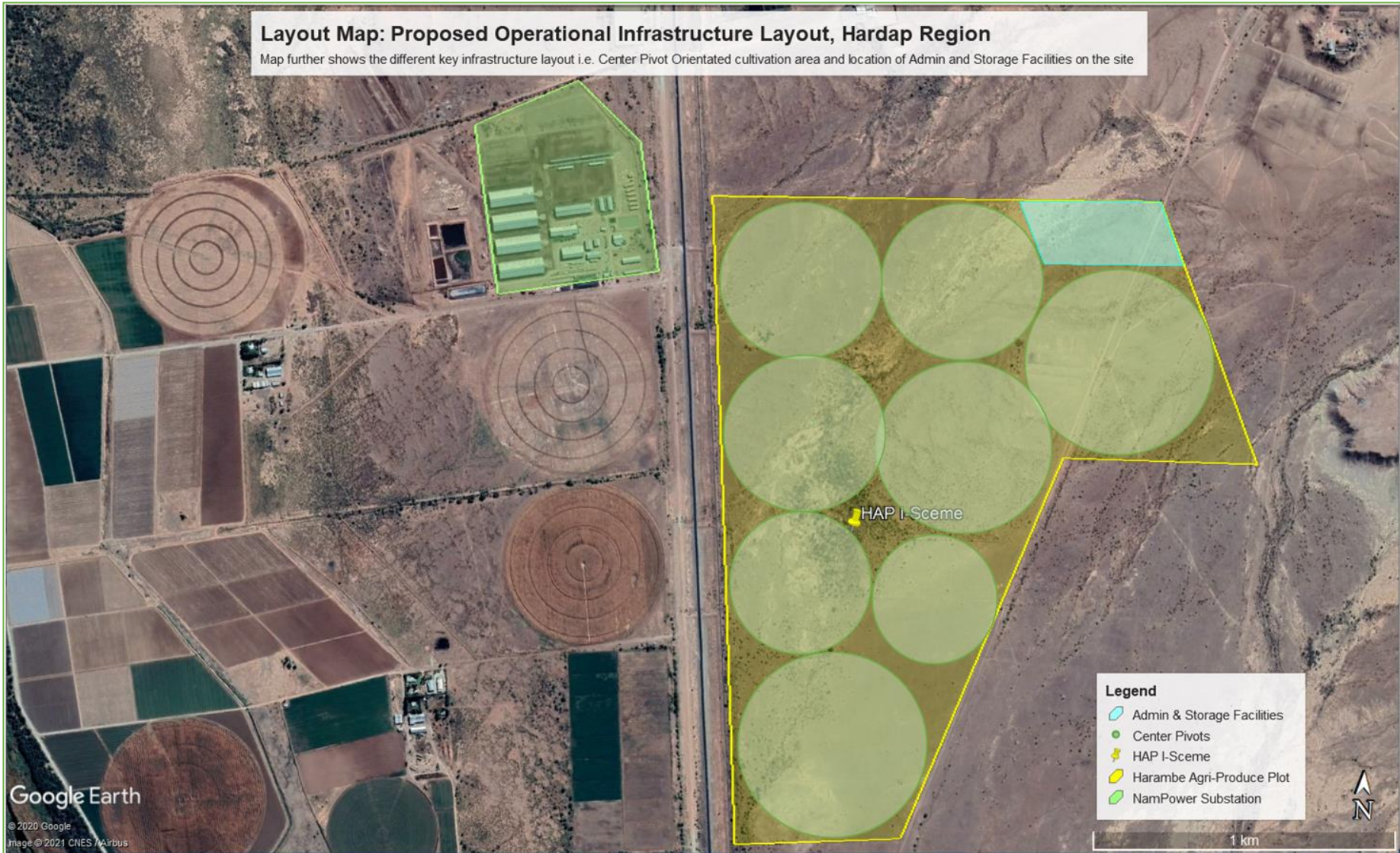


Figure 9: Illustration the proposed infrastructure layout of the proposed Harambee Agri-Produce's irrigation activity