

1 BID INTRODUCTION

Oshakati Premier Electric (OPE) (Pty) Ltd plans to establish a 10 MVA photovoltaic (PV) solar plant in Oshakati (Oshakati Solar Plant (OSP) hereafter). This document details the Environmental Management Plan (EMP) as informed by the Environmental Assessment (EA) conducted for this project.

The proposed site is approximately 28 ha in size. The following are the main project components:

- The solar panels and support structures;
- Inverters and step-up transformers; and
- 11 kV transmission line supported by monopole structures.

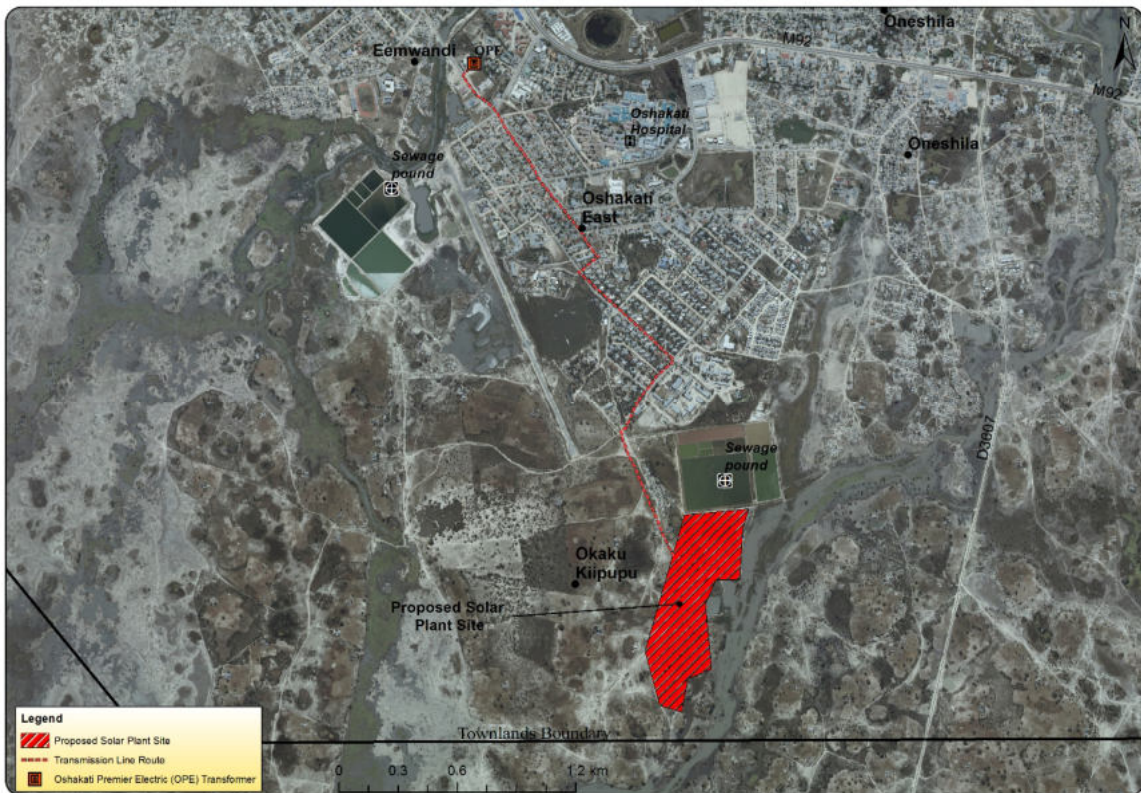


Figure 1: Proposed project site and transmission line route

The OSP, once established, will consist of 1 350 solar PV tables with each table (17 m X 3.2 m) comprising 34 solar panels (45 900 solar panels in total). A single solar PV table will be mounted approximately 1 m above the ground supported by several steel poles with a concrete footing. 12 substations will be erected on-site each with an inverter and small step-up transformer. The electricity generated will be transmitted to the OPE Substation 3.3 km to the north-west along six aluminium conductors in three phases (two conductors per phase) supported by 12 m high monopole structures (potentially wooden, but most probably concrete).

An EMP is one of the most important products of an Environmental Assessment (EA) process. An EMP synthesises all recommended mitigation and monitoring measures, laid out according to the various stages of a project life cycle, with clearly defined follow-up actions and responsibility assigned to specific actors. This EMP has been drafted in accordance with the Namibian Environmental Management Act (No. 7 of 2007) and its Environmental Impact Assessment Regulations (2012). This plan describes the mitigation and monitoring measures to be implemented during the following phases of the OSP development:

- Planning and design;
- Construction tender preparation; and
- Operation and maintenance.

The explicit decommissioning of this project is not foreseen, however some mitigation measures will be provided for, in the event that decommissioning takes place.

The commitments described here form part of the Environmental Clearance Certificate (ECC) between OPE and the state, as represented by the Ministry of Environment and Tourism. Non-compliance is considered illegal and may have legal consequences. The amendment, transfer or renewal of the ECC for this project, as well as any changes to this EMP, should be communicated to the Environmental Commissioner as stipulated in the Environmental Management Act of 2007 (S 39-42).

