

## Background Information Document (BID)

**Environmental Scoping Assessment (ESA ) for the Proposed Prospecting and Exploration activities on Exclusive Prospecting License s (EPLs) No. 8969 & 8970 located North West of Uis in Erongo Region, Namibia.**

**Environmental Consultant:** Excel Dynamic Solutions (Pty) Ltd

**Proponent:** Appolos Tunomukumo Shimakeleni

**August 2023**

## 1. INTRODUCTION AND BACKGROUND

Excel Dynamic Solutions (Pty) Ltd (the consultant) has been appointed by Appolos Tunomukumo Shimakeleni (the proponent) to act on their behalf in obtaining an Environmental Clearance Certificate (ECC), for the proposed mineral exploration activities on Exclusive Prospecting License (EPLs) 8969 & 8970. The target commodities for the proposed exploration activities are Base & Rare Metals, Dimension stone, Industrial and Precious Metals. The project area is located approximately 120 km West of Uis in the Erongo Region in the Dorob National Park as shown in **Figure1 and 2**). EPL 8969 (17228.6365 ha) and EPL 8970 (4328.6024 ha) covers a combined area of 21 557.23891.

Exploration and all mining-related activities are among listed activities that may not be undertaken without an ECC under the Environmental Management Act (EMA) (2007) and its 2012 Environmental Impact Assessment (EIA) Regulations. The relevant listed activities as per EIA regulations are:

- *3.1 The construction of facilities for any process or activities which requires a license, right of other forms of authorization, and the renewal of a license, right or other form of authorization, in terms of the Minerals (Prospecting and Mining Act, 1992).*
- *3.2 other forms of mining or extraction of any natural resources whether regulated by law or not.*
- *3.3 Resource extraction, manipulation, conservation and related activities.*

To fulfil the EMA and EIA Regulation requirement, the proponent has appointed Excel Dynamic Solutions (Pty) Ltd, an independent team of Environmental Consultants, to conduct the required Environmental Assessment (EA) process and submit the ECC application to the Department of Environmental Affairs and Forestry (DEAF) of the Ministry of Environment, Forestry & Tourism (MEFT).

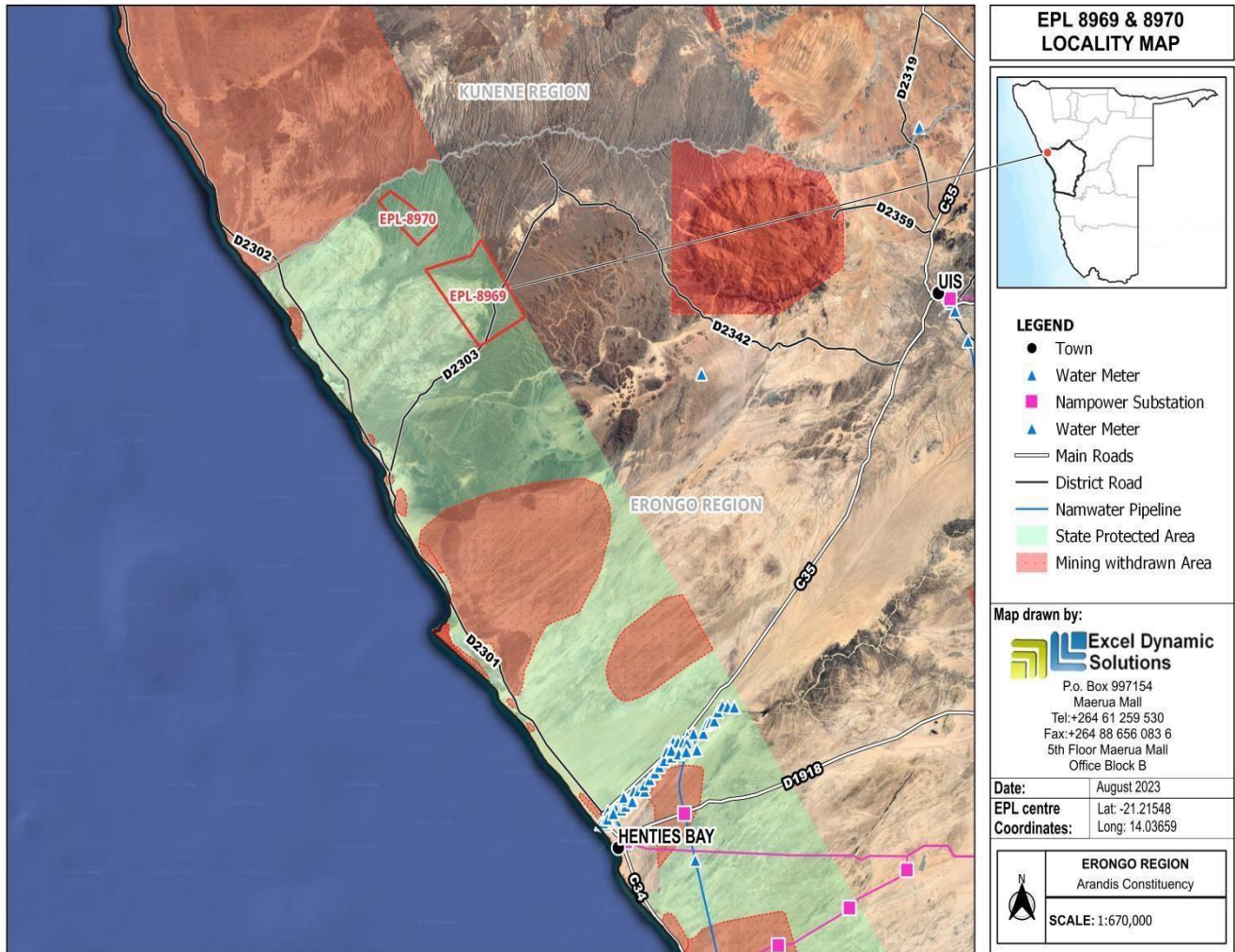


Figure 1: The locality map of EPL-8969-8970.

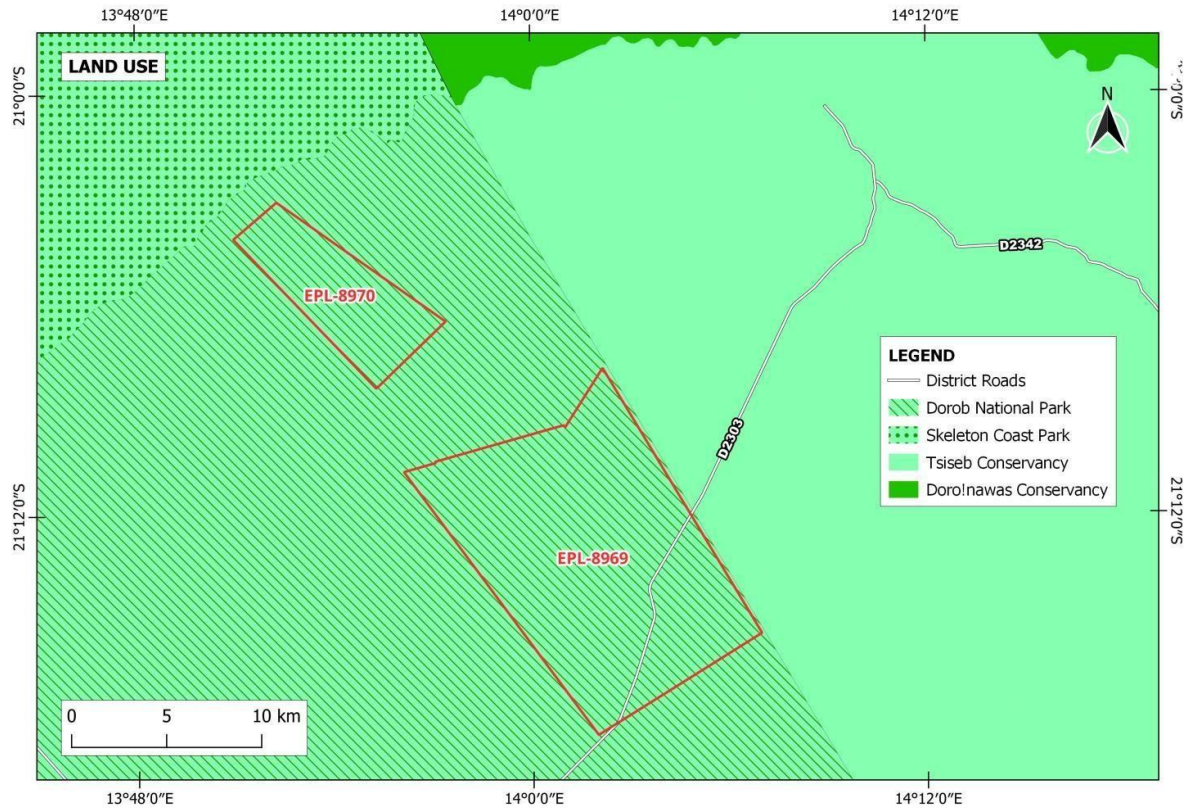


Figure 2: Land Use Map for EPL-8969 & 8970.

**2. PURPOSE OF THIS DOCUMENT**

This Background Information Document (BID) is a non-technical document of the ESA and not an ESA Report.

The BID is aimed at introducing the proposed project and related activities to potential interested and affected parties (I&APs) and stakeholders, and afford them an opportunity to raise issues, and concerns, and submit comments about the proposed project. The planned exploration activities will only commence once the Proponent has been issued with an ECC and has obtained all required permits such as land use consent, where necessary,

### 3. PROJECT DESCRIPTION

The proposed activities entail prospecting and detailed exploration activities to delineate the mineral deposits. This is to determine whether the deposit for the targeted commodities is economically feasible (to advance to the resources development and mining phase).

Prospecting and exploration of minerals are the first components of any potential mining project, done to acquire the necessary data required for further decision-making and investment options.

Exploration activities are anticipated to last for about three years or sometimes longer (depending on the various factors such as turnaround between exploration data analysis and availability of funds between project phases).

#### 3.1 Project Activities

The proposed prospecting and exploration activities (methods) are divided into the following categories:

Phase 1: Non-invasive techniques (prospecting) – mapping/surveys.

Phase 2: Invasive techniques (detailed exploration) – soil sampling, trenching and exploration drilling.

Once the target areas have been selected and verified under the prospecting phase, detailed exploration works will follow.

#### 3.2 Human Resources, Services, and infrastructure

The following services and infrastructure as outlined below will be required for the project activities:

**Human Resources:** Around 5-7 people will be employed for the project, and will be accommodated in tented camps and accommodation at nearby lodges.

**Water Supply:** Around 2500 liters of water per month will be required for the activities.

**Fuel Supply (machinery and equipment):** Diesel will be used for machinery and equipment, and power generator.

**Accessibility:** The EPL is accessible via the D2303 road from Uis Settelement.

### 3.3 Waste Management

**Sewage:** Mobile chemical ablution facilities will be provided on-site. Sewage waste will be disposed of appropriately as per instructions of the facility manufacturer.

**Solid waste:** Sufficient waste bins (containers) will be made available at exploration sites and campsites for waste storage and later disposal at the nearest approved waste facility.

**Hazardous waste:** The waste fuel/oils will be carefully stored in a standardized container for disposal at an approved hazardous waste management facility in the nearest Town.

**Health and Safety:** Adequate and appropriate Personal Protective Equipment (PPE) will be provided to project personnel. A minimum of two first aid kits will be readily available onsite.

**Potential Accidental Fire Outbreaks:** Fire extinguishers will be readily available in vehicles, at the sites, and campsite.

**Project Equipment, Material, Machinery, and Vehicles:** 4X4 vehicles, a drilling supporting truck, an excavator/front-end loader, a dozer, an air compressor, drilling fluids stored in manufacturers approved containers, and a generator for power supply will be required for the proposed project.

Upon completion of exploration works, the disturbed sites will be rehabilitated as far as practically possible, to their pre-exploration state. This will include backfilling of exploration trenches, and boreholes, leveling of stockpiled topsoil, and cleaning of site areas.

## 4. ENVIRONMENTAL ASSESSMENT

This ESA process is conducted in accordance with the provisions of the EMA (Act No 7 of 2007) and its 2012 EIA Regulations. The primary objective of the ESA is to identify potential negative impacts associated with the project and assess them. Practical and effective mitigation measures will be recommended for implementation.

The main objectives of this ESA are to:

- Identify potential impacts associated with the proposed Activity.
- Inform I&APs and relevant authorities about the project and provide them with an opportunity to participate during the ESA process.
- Assess the significance of issues and concerns raised.

- Compile a report addressing all identified issues and potential impacts.
- Compile a Draft Environmental Management Plan (EMP) which includes impacts management and mitigation measures.

## **5. POTENTIAL IMPACTS**

The following potential impacts have been identified:

### **5.1 Positive:**

- Socio-economic development: employment creation and skills transfer.
- Investment opportunities/infrastructure-related development benefits,
- Produce a trained workforce and small businesses in the area.
- Boosting local economic and regional economic development.
- Increased support for local businesses through the procurement of locally available goods and services.

### **5.2 Negative Impacts:**

- Disturbance of existing grazing areas,
- Physical land/soil disturbance and prone to erosion
- Impact on fauna and flora (habitat disturbance and poaching).
- Water resources (over-abstraction of water) and soil pollution.
- Air quality issue owing to dust generation
- Occupational and community health and safety risks/hazards
- Vehicular traffic safety and services infrastructure (local roads).
- Vibrations and noise associated with drilling activities.
- Environmental pollution from poor waste management,
- Archaeological or cultural heritage impact
- Potential social nuisance and land use conflicts

Other potential impacts may be identified as the ESA process progresses. All impacts and public concerns/comments will be incorporated and addressed in the Environmental Report and EMP.

## **6. PUBLIC CONSULTATION REGISTRATION**

Public consultation is an important part of the EA process. During public consultation, I&APs are given an opportunity to raise any issues or concerns pertaining to the project activities.

To comment or receive further information on the project, please register with Excel Dynamic Solutions (Pty) Ltd as an Interested & Affected Party, and have the opportunity to comment on the proposed project.



**Excel Dynamic Solutions**  
(PTY) LTD

**Contact: Ms. Aili Ipinge/Excel Dynamic Solutions(Pty) Ltd**

**Tel: +264 (0) 61 259 530**

**Fax: +264 886 560 836**

**Email: [public@edsnamibia.com](mailto:public@edsnamibia.com)/[iipingea@edsnamibia.com](mailto:iipingea@edsnamibia.com)**