

WELCOMING GUESTS

... Mercia Tjiveze and Desert Anwes, two employees of Farmhouse Restaurant Outjo Bed and Breakfast, were on Tuesday cleaning windows in anticipation of tourists. Anesta Gabathuler, owner of the establishment, says her business is ready to receive guests and that rooms have been disinfected. Gabathuler employs 21 people and told *The Namibian* they have hand sanitisers in each room and a tippy tap. Many hospitality establishments are currently preparing to welcome tourists after the government opened the country's borders to tourists recently.

Photo: Clemans Myanicwa



Nam students in Cuba to receive parcels next week

• ARLANA SHIKONGO

PARCELS prepared by relatives and friends of Namibian students currently studying in Cuba will leave Namibia for Havana tomorrow.

This is according to a press release issued by executive director of health and social services Ben Nangombe yesterday.

Nangombe said the Ministry of Health and Social Services secured a purchase order with a cargo operator last Wednesday, and the parcels will be transported to Havana via Johannesburg.

Nangombe told *The Namibian* the ministry made a purchase order of just over N\$600 000.

"This follows the non-materialisation of the first attempt to deliver the parcels at the beginning of August 2020. The cargo, according to the service provider, is scheduled to arrive in Cuba on 24 September 2020," he said.

Nangombe said the main challenge in executing the delivery of the cargo has been the lack of flights due to the suspension of commercial flights and the closure of airspaces by several governments due to the coronavirus pandemic.

"Moreover, the demand for international cargo services has outstripped supply due to increased demand to deliver Covid-19-related supplies around the world," Nangombe said.

The approximately 250 students, enrolled at different tertiary institutions in Cuba, have been struggling to buy basic cosmetics and other necessities due to a lockdown in Cuba since mid-March.

Parcels were prepared for them in June already.

Some of the students earlier this week said they had had to ration their use of necessities such as toothpaste, shampoo and soap.

In some instances they have bought items from their South African counterparts who have received several packages of essential goods from their home country.

"The South African students received three parcels from home. So at some point they also sold some things, or if you had some friends, they would give you items just to help you out," one of the students, who wanted to remain anonymous, said. The students have been desperately awaiting the arrival of their parcels as they say it was not only filled with food and cosmetics, but also with important items such as bank cards and medicine.

"That is like our oxygen... they are not just bags," one of the students said.

'Govt can save much more than N\$100m'

• ELIASER NDEYANALE

POPULAR Democratic Movement treasurer general Nico Smit has called on the government to cut the perks of civil servants and politi-

cians. His call came after Minister of Finance Spokesperson Tomateni Shidhadu on Monday this week disclosed that the government has saved more than N\$100 million in the travel costs of high-ranking

government officials, including president Hage Geingob. He said a total of N\$222 million had been reserved for travel expenses by government officials. Of that amount, only N\$15.8 million has been spent so far.

During the same period in 2019, the government had spent N\$116 million of its travel budget of N\$263 million.

The president and other government officials have been unable to travel abroad due to the coronavirus pandemic.

Smit says it is unfortunate that something like Covid-19 had to happen for the government to realise there is a lot of unnecessary wastage of public funds.

He says his party had repeatedly called on the government to significantly cut the perks of civil servants and politicians to reduce wastage, but their calls fell on deaf ears.

"While we welcome the fact that taxpayers have now been relieved of the burden of having to pay over N\$100 million in travel and subsistence allowances for civil servants... we believe the government can save much more money by cutting down on other unnecessary expenditure within the public service," he says.

Smit says Covid-19 has also taught Namibia that with advanced technological platforms such as Zoom



Nico Smit

reduce carbon dioxide emissions, but would also significantly contribute to saving on travel expenses and per diems.

Political pundit Ndumba Kamwanyah says the government can adopt some effective cost-saving measures from the country's Covid-19 experience.

He says non-travelling arrangements, online meetings, and many people working remotely help cut S&Ts, and electricity and water bills.

Namibia Economic Freedom Fighters (NEFF) parliamentarian Kalimbo lipumbu says meetings should continue as per Covid-19 regulations.

"However, we wonder if this money was saved as they are saying. There is no transparency in this process and, in fact, money that was saved is total lies, as they have contacted their friends to install online software for them," he says.

Iipumbu says Covid-19 is real, but claims "the elites are hiding and stealing money through it".

"Instead of saving for the future, they are busy making themselves rich," he says.

The Namibian reported last year that Geingob travelled to 16 countries in 2018, and qualified for an estimated N\$850 000 in travel allowances.

The president earns around N\$1,7 million per year, which is not taxed.

Covid-19 Top Statistics

Worldwide coronavirus cases (16 September): 29 822 194
Deaths: 941 010
Recovered: 21 615 121
Active cases: 7 266 063

Namibia (16 September): 9 964 confirmed infections
Deaths: 108
2 354 active cases
63 new infections
83 424 samples tested
1 072 people in quarantine

Most-affected countries
United States: 6 796 567 confirmed infections
200 650 deaths
4 069 609 recovered
India: 5 060 818 cases; 82 504 deaths
Brazil: 4 384 880 cases; 133 217 deaths

Most-affected African countries
South Africa: 651 521 confirmed infections
15 641 deaths; 583 126 recovered
Egypt: 101 340 cases; 5 679 deaths
Morocco: 90 324 cases; 1 648 deaths

Southern Africa numbers
Zambia: 13 887 cases; 326 deaths
12 869 recovered
Zimbabwe: 7 576 cases; 224 deaths
Angola: 3 569 cases; 139 deaths
Botswana: 2 463 cases; 11 deaths

Source: Worldometer, Ministry of Health and Social Services

NOTICE OF ENVIRONMENTAL IMPACT ASSESSMENT (EIA) FOR EXPLORATION ACTIVITIES ON OFFSHORE EXCLUSIVE PROSPECTING LICENSE (EPL) NO. 626, SOUTHWEST OF NAMIBIA

Under the Environmental Management Act No. 7 of 2007 and its 2002 EIA Regulations, for the proposed prospecting and exploration activities on the EPL, EIA/ESIA requires an Environmental Clearance Certificate (ECC) from the Department of Environmental Affairs (DEA) before commencement. Therefore, the public is hereby notified that an application for an Environmental Clearance Certificate (ECC) will be submitted to the Environmental Commissioner.

Brief Project Description: EPL 626 (S. 28.533 E 14.477) is an offshore prospecting licence covering a total area of 2892.2013 Ha. Both onshore and non-invasive exploration activities are planned to take place upon issuance of an environmental clearance certificate.

Proponent: Franklin Akulu Okavango
Environmental Consultant: Envi-Dynamic Solutions (Pty) Ltd

Members of the public are invited to register as Interested and Affected Parties (IAPs) in order to communicate concerns or receive further information on the EIA process. Registration reports and comments should be forwarded to Envi-Dynamic Solutions (Pty) Ltd on the contact details below before end of business day on 05 October 2020.

Public meeting details will be communicated to registered IAPs.

CONTACT:
Envi-Dynamic Solutions
P.O. Box 60, 9001 Windhoek, SWA
Tel: +264 61 208 500 ext 201, 202, 203
Email: info@envi-dynamic.com

Moussa Traore dies, led Mali for 22 years

Bamako - Moussa Traore, who led Mali from 1968 until he was ousted in a coup in 1991, died at his home aged 83 in the capital Bamako on Tuesday, his family said.

As a young lieutenant in 1968, Traore was the main instigator of a coup that overthrew Modibo Keita, the country's first post-independence president.

He became president the following year and ruled with an iron fist.

His 22 years at the helm of the West African country were marked by the arrests of opponents, quashed demonstrations, suspicious deaths such as that of former president Keita in detention, and accusations he embezzled international aid money.

But he was also known for his diplomatic skills. As chair of the then Organisation of African

Unity (now the African Union), he played a key role in the 1989 Senegal-Mauritania crisis and the Chadian-Libyan conflict, as well as Liberia's first civil war.

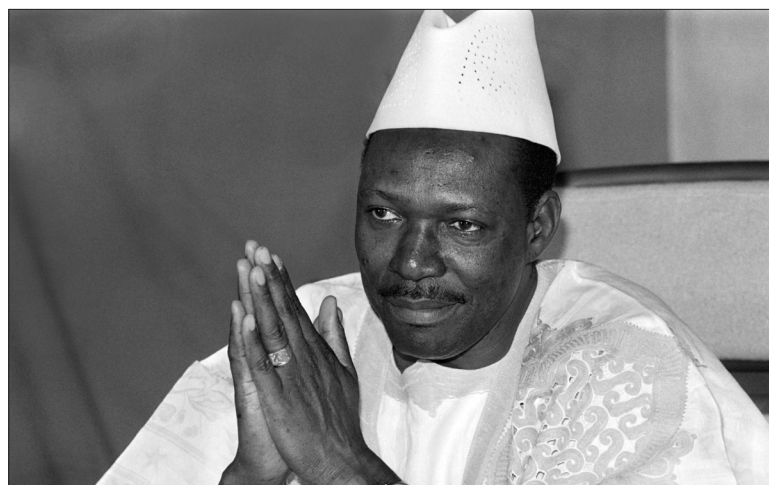
Traore reached a peace agreement in 1990 with Mali's Tuareg armed rebel groups after making significant concessions.

But in 1991, the soldiers he had sent to quell pro-democracy demonstrators turned against him and overthrew him in a bloody insurrection, which officially resulted in more than 200 dead and 1 000 wounded.

He was sentenced to death for "political crimes" in 1993 and, along with his wife, for economic crimes in 1999.

The sentences were commuted to life in jail, and Traore was pardoned in 2002.

"When you embark on a military career, you prepare



No more... Former Malian president Moussa Traore. Photo: Nampa/AFP

yourself for the idea of not dying in your bed," he said upon hearing his first verdict in 1993.

In recent years, Traore was increasingly seen as an elder statesman, with politicians

soliciting his advice.

Former prime minister Soumeylou Maiga expressed on Twitter his "great dismay" over Traore's death, in a tribute in which he referenced the "friendship and

respect that we have developed over the past several years".

Traore's death comes just four weeks after another putsch - Mali's fourth since independence from France in 1960 - after rebel army officers overthrew president Ibrahim Boubacar Keita on August 18.

Twice-elected Keita still had three years left in his second five-year term in office.

He had been facing mounting protests over his failure to curb a bloody eight-year-old jihadist insurgency, cure Mali's sickly economy and root out corruption.

Talks were taking place in Ghana on Tuesday between the junta leader, Colonel Assimi Goita, and the 15-nation West African bloc ECOWAS on determining a timetable for restoring civilian rule.

- Nampa/AFP

Amnesty seeks probe into Mozambique naked woman execution

JOHANNESBURG - Rights watchdog Amnesty International on Tuesday called for an independent probe into the killing of a naked pregnant woman by men in military uniform in Mozambique's restive north, an atrocity the government blamed on jihadist rebels.

Video footage emerged this week showing men in army uniform beating a woman they accused of being an insurgent and then pumping bullets into her.

The Amnesty call came as the government in Maputo blamed the killing on militants who have waged a violent insurgency in the gas-rich Cabo Delgado province for the past three years.

"The authorities in Mozambique must immediately launch an independent and impartial investigation into the extrajudicial killing of a defenceless naked woman," Amnesty said.

The government had on Monday vowed to investigate the video killing.

But Interior Minister Amade Miquidade on Tuesday said the killers were jihadists dressed in uniforms "identical" to that of

government troops.

"The video showing atrocities against a pregnant woman is propaganda by terrorists," he said in an audio statement.

"The video was made by terrorists ...to confuse the public and it is not the first time that this has happened," he said.

The video first circulated on social media on Monday, but was first shared privately on mobile phones on September 7, the day it is suspected to have been taken, according to Amnesty.

It showed what appears to be government troops shouting and marching behind a woman stripped of her clothing before beating and shooting her 36 times.

Amnesty said the footage was yet "another gruesome example of the gross human rights violations and merciless killings taking place in Cabo Delgado by the Mozambican security forces."

According to analysis by Amnesty International, the yet unidentified woman was killed along a road in the small town of Awasse.

The executioners were heard shouting

in Portuguese that she is a member of al-Shabaab, the name of shadowy jihadist group that has led a growing insurgency against the government since 2017.

Deprose Muchena, Amnesty's regional director for east and southern Africa, said the incident was consistent with the watchdog's recent findings of rights violations and crimes "committed by the Mozambican armed forces."

Human Rights Watch (HRW) researcher Zenaida Machado said the government had failed to keep the security forces in line.

"Instead ... what they invested on is a campaign of denial, a campaign of attacking groups like ours, activists and anyone who condemns the attitude and conduct of security forces," Machado said.

Military forces have been struggling to regain control of Cabo Delgado, which is home to one of Africa's biggest liquefied natural gas projects.

The jihadist violence has claimed

more than 1 500 lives and displaced at least 250 000 people since 2017. - Nampa/AFP

PUBLIC NOTICE ENVIRONMENTAL IMPACT ASSESSMENT

Stubenrauch Planning Consultants (SPC) hereby give notice to all potentially Interested and Affected Parties (I&APs) that an application will be made to the Environmental Commissioner in terms of the Environmental Management Act (No 7 of 2007) and the Environmental Impact Assessment Regulations (GN 30 of 6 February 2012) for the following:

PROJECT DETAILS:

- Subdivision of Portion 16 of the Farm Oranjemund Town and Townlands No. 165 into Portion A and the Remainder;
- Rezoning of Portion A (a Portion of Portion 16) from "Private Open Space" to "Undetermined" for township establishment purposes;
- Need and desirability for township establishments on proposed Portion A (a Portion of Portion 16) of the Farm Oranjemund Town and Townlands No. 165;
- Registration of a 15 meter right of way servitude over Portion A/16 of the Farm Oranjemund Townlands No 165 in favour of Portion 5;
- Registration of a 15 meter right of way servitude over Portion 6 of the Farm Oranjemund Townlands No 165 in favour of the Remainder of Portion 16.

The proponent intends to Subdivide Portion 16 of the Farm Oranjemund Town and Townlands No. 165 into Portion A and Remainder. Portion A will be rezoned from Private Open Space to Undetermined. The proposed subdivision and rezoning will enable the Town Council to develop a township on the subject portion. The Proponent aims to undertake the above-mentioned statutory procedures to avail land for a marina development (to be made available for private investment).

The Proponent: Oranjemund Town Council
Environmental Assessment Practitioner (EAP): Stubenrauch Planning Consultants (SPC)

REGISTRATION OF I&APs AND SUBMISSION OF COMMENTS:

In line with Namibia's Environmental Management Act (No. 7 of 2007) and EIA regulations (GN 30 of 6 February 2012), all I&APs are hereby invited to register and submit their comments, concerns or questions in writing via

Email: bronwynn@spc.com.na;

Fax: 061 25 11 89 or

Tel: 061 25 21 57

on or before **1 October 2020**.



UN adopts change in structure for Libya mission

UNITED NATIONS - The UN Security Council adopted a resolution Tuesday under pressure from the United States endorsing a change in structure for its mission in Libya, which will in the future have a special envoy and a "coordinator."

Thirteen of the 15 Council members voted for the resolution, with Russia and China abstaining.

The new structure accompanies a one-year renewal for the UN Support Mission in Libya (UNSMIL), decided after more than six months of squabbling.

It is now up to UN Secretary General Antonio Guterres to appoint people for the new roles. The resolution states that "UNSMIL should be led by a Special Envoy of the Secretary-General... with a particular focus on good offices and mediation with Libyan and international actors to end the conflict."

Under the envoy's authority, "an UNSMIL Coordinator shall be in charge of UNSMIL's day-to-day operations and

management."

UNSMIL has not had a special envoy since Ghassan Salame stepped down in March for health reasons, and bickering between the United States and its partners on how the role should be defined has stalled naming a successor.

Guterres had tapped former Algerian foreign minister Ramtane Lamamra, but Washington nixed his nomination for reasons that were not made public.

The UN chief then turned to former Ghanaian minister Hanna Serwaa Tetteh but the US again rejected it, asking that the post be split in two - a political envoy and a boss for the UN mission, as is the situation for Cyprus or Western Sahara.

Washington, which has pushed for former Danish prime minister Helle Thorning-Schmidt to be the next special envoy, has been criticized by the other 14 Council members for stalling the nomination process, diplomats said.

The resolution also requests that

Guterres define within the next two months "steps required to reach a lasting ceasefire" and to simultaneously provide "proposals" for possible UN "monitoring."

Finally, the text calls for "full compliance" with the arms embargo that has been in place 2011 but is regularly violated, "including by ceasing all support for and withdrawing all armed mercenary personnel" in Libya. Peter Maurer, the president of the International Committee of the Red Cross, said in an interview Tuesday he "rather encouraged" to see political progress, even if it was "too early to assess" whether the resolution would lead to stability.

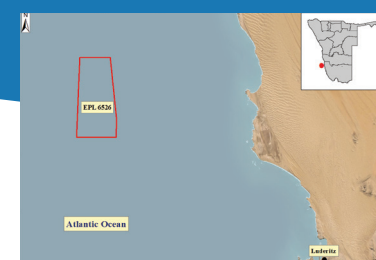
Interim British ambassador to the UN Jonathan also spoke of "positive noises" from Libya, before the Council meeting, "particularly out of both sides, calling for a ceasefire at the same time in a coordinated way."

Libya has endured almost a decade of violent chaos since the 2011 NATO-backed uprising that toppled and killed veteran dictator Moamer Kadhafi.

The UN-recognized Government of National Accord (GNA) and an eastern administration led by strongman Khalifa Haftar are vying for power against a backdrop of dozens of local conflicts.

- Nampa/AFP

NOTICE OF ENVIRONMENTAL IMPACT ASSESSMENT (EIA): FOR EXPLORATION ACTIVITIES ON OFFSHORE EXCLUSIVE PROSPECTING LICENSE (EPL) NO. 6526, SOUTHWEST OF NAMIBIA



Under the Environmental Management Act No. 7 of 2007 and its 2012 EIA Regulations for the proposed prospecting and exploration activities on the EPL 6526 require an Environmental Clearance Certificate (ECC) from the Department of Environmental Affairs (DEA) before commencement. Therefore, the public is hereby notified that an application for an Environmental Clearance Certificate (ECC) will be submitted to the Environmental Commissioner.

Brief Project Description: EPL 6526 (S -26.133; E 14.477) is an offshore prospecting licence covering a total area of 28681.2813 Ha. Both invasive and non-invasive exploration activities are planned to take place upon issuance of an environmental clearance certificate.

Proponent: Franklin Ailohi Ohiozebau
Environmental Consultants: Excel Dynamic Solutions (Pty) Ltd

Members of the public are invited to register as Interested and Affected Parties (I&APs) in order to comment/raise concerns or receive further information on the EIA process. Registration requests and comments should be forwarded to Excel Dynamic Solutions (Pty) Ltd on the contact details below before end of business day or on **01 October 2020**.

Public meeting details will be communicated to registered I&APs

CONTACT:
Mr. Nerson Tjelas
T: +264 61 259 530 / +264 91 152 4420,
E: info@edsnamibia.com
Excel Dynamic
Solutions (PTY) LTD



Excel Dynamic Solutions
— Consultants.DataExperts.ProjectManagers —

Physical Address: 112, Robert Mugabe Avenue, Windhoek
Postal Address: PO Box 997154 Maerua Mall, Windhoek
Telephone: +264 (0) 61 259 530 **Fax2email:** +264 (0) 886 560 836
Email: info@edsnamibia.com **Web:** www.edsnamibia.com

Document Type:

Background Information Document (BID)

Project Name:

Environmental Assessment (EA) for the Offshore Exploration Activities on Exclusive Prospecting License (EPL) No. 6526 Located within the Lüderitz basin in the Kharas Region, Namibia

Environmental Assessment Practitioner:

Excel Dynamic Solutions (Pty) Ltd

Proponent:

Franklin Ailohi Ohiozebau

Date:

July 2020

Revision Date:

August 2020

1 INTRODUCTION

Franklin Ailohi Ohiozebau (hereinafter referred to as The Proponent) has been granted an Exclusive Prospecting Licence (EPL) No. 6526 by the Ministry of Mines and Energy (MME). The tenure of the licence is from 4 March 2020 and is valid until 3 March 2023. The covered area is prospective for Precious Stones, upon which detailed prospecting and exploration activities will be conducted.

The tenement is situated within the Lüderitz basin approximately 70km north-northwest (NNW) of Lüderitz and 43km West of Hottentots Bay in the Kharas Region. The area lies within water depths of about 200mbsl to 500mbsl, with a lateral extent of 28681.28113ha. The approximate location of the EPL 6526 is shown in **Figure 1** (coordinates: 26°9'59" S, 14°28'39" E). (See attached in **Appendix A**).

The Proponent intends to conduct offshore mineral exploration activity leading to the estimation and delineation of the target resource. As a request for approval for mineral exploration activity on EPL 6526, The Proponent is required to submit an Environmental Assessment Report (EAR) and draft Environmental Management Plan (EMP) to the Ministry of Environment, Forestry and Tourism (MEFT) and MME. On

approval, The Proponent would be issued with an Environmental Clearance Certificate (ECC) from the MEFT.

Prospecting and exploration form part of the listed activities that may not be undertaken without an Environmental Clearance Certificate (ECC) under the Environmental Management Act (EMA) (2007) and its 2012 EIA Regulations. The proposed prospecting and exploration activities are listed activities that require an ECC from the Department of Environmental Affairs (DEA) of the MEFT. The relevant listed activities as per EIA regulations are:

- *3.1 The construction of facilities for any process or activities which requires a license, right of other forms of authorization, and the renewal of a license, right or other form of authorization, in terms of the Minerals (Prospecting and Mining Act, 1992).*
- *3.2 other forms of mining or extraction of any natural resources whether regulated by law or not.*
- *3.3 Resource extraction, manipulation, conservation and related activities.*

The Proponent has appointed Excel Dynamic Solutions (Pty) Ltd, an independent team of Environmental Consultants to conduct the required Environmental Assessment (EA) process and submit the ECC application to the Environmental Commissioner on their behalf.

2 PURPOSE OF THIS DOCUMENT

The aim of the EA is to generate information on the environmental impacts of a project, facilitate the consideration of environmental issues in planning and decision-making processes, and give the public and other stakeholders opportunities to participate in and provide input to the processes. The purpose of this document is to provide background information to interested and affected parties (I&APs) of the project, thus providing an opportunity for them (I&APs) to receive information, comment and raise issues regarding the environmental authorization process. The information from I&APs will help regulatory authorities (MEFT and MME) to judge the acceptability of the project, and if deemed acceptable, the ECC is issued.

3 I&AP'S/ STAKEHOLDERS

Communities, government representatives, scientific organisations, environmental health organizations, and non-governmental organizations are being invited to participate in the EA Public Participation process by means of public meetings, telephonic and written correspondence.

Community members (Lüderitz & Hottentots)
Fisheries Organisations
Government representatives
Scientific and Marine Resource Organisations
Non-Governmental Organisations
Environmental Health Organisations
General Public

4 NEED AND DESIRABILITY OF THE ACTIVITY

Mining accounts for 12.5% of Namibia's GDP. It is the largest contributor to the Namibian economy; therefore, the mining industry contributes to the improvement of livelihoods. In Namibia, exploration for mining occurs mainly within the private sector and it has great potential to enhance and contribute to the development of other sectors. The mining sector forms the vital part of some of Namibia's development plans, namely: Vision 2030, National Development Plan 5 (NDP5) and Harambee Prosperity Plan (HPP). Thus, mining is essential to the development goals of Namibia in contributing to meeting the ever-increasing global demand for minerals, and for national prosperity. Successful exploration work can lead to offshore mining activity on the EPL 6526, which would feed into the aforementioned development plans.

Partaking of the local organisations/groups in the offshore mining sector would enhance the already existing marine mining activity offshore Namibia and provide employment opportunities to Namibians.

As a portable repository of value, precious stones would contribute greatly to the generation of foreign currency and positively contribute to the national GDP. This in turn, can

support the aim of achieving a balance between the establishment and dissemination of wealth.

5 PROJECT DESCRIPTION

The following phases will be addressed in the EA and subsequently in the EMP:

- **Operation and maintenance** - This is the phase during which the Proponent is exploring for precious stones on the EPL and undertaking related activities. The level and magnitude of planned exploration work is not clear at this stage. However, the Proponent has highlighted that both invasive and non-invasive exploration activities are expected to take place upon issuance of an ECC. A 6 to 9 months exploration period is predicted.

Geophysical surveying is non-invasive and will have minimal impact on the environment, while marine sampling will involve extraction of sediment samples from the seabed and will have a localised impact on marine biota. However, it is envisaged that sampling will be short-term, and focused on limited sample points as part of a grid survey to determine the viability of the resource. The benthic communities surrounding the sampling sites will be able to repopulate and renourish the affected

sampling areas. The impacts of mining itself, should the resource prove viable, will be subject to a more detailed impact assessment, along with mitigation measures.

Furthermore, the selection of the potential mineralization model and exploration targets will be done based on the local geology mapping and assay results of the samples collected and information from desktop study.

- **Decommissioning** – The decommissioning of the exploration operations may be considered due to various reasons beyond the scope of this report. During the operational phase and before decommissioning, the Proponent will need to put exploration site rehabilitation measures in place.

The scoping process will identify sensitive environmental features that might be affected by the proposed offshore exploration and mining activities.

5.1 Accessibility

The EPL is located 70km NNW of Lüderitz and 43km west of Hottentots Bay in Namibia. It is accessible by use of vessels from the Port of Lüderitz.

5.2 Water and Power Supply

Potable water for use aboard the exploration vessel will be sourced from Lüderitz Port and will be carried in tanks on the vessel. Purification of water through a desalination process on board will also be used to produce additional potable water.

The marine exploration vessel will use Marine Gas Oil as fuel for operation. Marine Gas Oil will also be used for offshore generators to supply power for operating the equipment for exploration.

5.3 Infrastructure and Equipment

The exploration vessel will make use of the Lüderitz harbour infrastructure.

Marine geophysical surveying will be conducted using a chartered vessel with an approximate length of 50m using the dynamic positioning (DP) system. This method allows the resultant sonographic mosaic charts and seismic profiles to be produced with reasonable accuracy.

Equipment that will be used during the geophysical survey include the following;

- Multibeam echo sounder (MBES) and swath bathymetry systems
- Side-scan sonar equipment
- High frequency seismic profiling system (low energy <12Hz)
- Magnetometer Systems
- Direct visual observation using underwater video systems usually mounted on Remotely Operated Vehicles (ROV)

Sampling will utilize a specialized vessel with an approximate length of 100m, which is capable of carrying a processing plant, accommodation space as well as a drill platform.

6 ENVIRONMENTAL ASSESSMENT

This EA process is conducted in accordance with the provisions laid out in the Environmental Management Act (No 7 of 2007) and its' Environmental Impact Assessment Regulations (2012). The primary objective of the EA will be to identify potential negative impacts associated with the proposed activity, assess them and recommend practical and effective mitigation measures to be implemented by the Proponent in order to minimize these impacts, while maximizing positive impacts. The EA process serves primarily to inform the public and relevant authorities about the proposed project and to determine any impacts. The EA project duration is 5 months.

The main objectives of this EA are to:

- Comply with Namibia's Environmental Management Act (2007) and its EIA regulations (2012).
- Identify potential impacts associated with the proposed Activity.
- Inform Interested and Affected Parties (I&APs) and relevant authorities about the mining activities and to provide them with a reasonable opportunity to participate during the EA process.
- Assess the significance of issues and concerns raised.

- Compile a report addressing all identified issues and potential impacts related to various aspects of the activity.
- Compile an Environmental Management Plan (EMP) which includes impact mitigation measures.

6.1 Environmental and Social Baseline

The proposed prospecting and exploration activities will be undertaken in a specific environmental and social condition. The summary of selected environmental and social baseline information pertaining to the exploration area is given below.

6.1.1 Climate and the Benguela Current

The EPL is located within the Benguela Current Large Marine Ecosystem (BCLME). There is a zone of high wind stress off the coast of Lüderitz, which is an area of perennially strong southerly winds, inducing a north-westward Benguela Current. The predominant southerly to south-easterly winds force upwelling of cold, nutrient-rich, relatively low salinity water along the coast. Winds here are typically stronger during summer than winter, resulting in seasonal variations in the intensity of upwelling, as well as synoptic scale variations over a period of a few days, associated with the passage of weather systems.

An air temperature inversion above the cold ocean surface results in fog commonly occurring along the west coast, which presents a navigational hazard.

6.1.2 Marine Ecology

The upwelled water is an important source of primary productivity in the BCLME, and sustains the ecology of the area.

The *benthic biota* of unconsolidated marine sediments of the Benguela upwelling system constitutes a major source of food for fish and other benthic predators and plays an important role in ecosystem processes such as nutrient cycling, pollutant metabolism, and dispersion and burial of organic matter.

The fauna is dominated by species that enjoy a widespread regional and global distribution and is characterised by relatively low diversity of mainly polychaetes and peracarid crustaceans.

6.1.3 Physiography and Local Geology

EPL 6526 is located on the inshore wedge of the Lüderitz Basin. Tertiary sediments dominate the near-shore geology to recent sediments overlying a Precambrian basement.

In addition to the north-westward setting Benguela Current, the predominant southerly swells result in a strong north-westward longshore drift along the coast, helping to facilitate the northward transport of sediments along the Namibian coast from their source of the Orange River. However at depth, there exists a slow, poleward (i.e. south-eastward) compensatory undercurrent of near-bottom water from the coast to west of the shelf break.

6.2 Potential Impacts

The following potential impacts have been identified so far for the surrounding towns, settlements and property:

Positive:

- Creation of jobs to the locals (primary, secondary and tertiary employment).
- Helps boost local economic growth.
- Open up other investment opportunities.
- Contribution to regional economic development.

Negative:

- Pollution resulting from possible accidents or emergencies at sea

- Possible destruction of faunal and floral habitats as well as removal of nutrients.
- Impacts on marine fisheries resources
- Potential health and safety risks associated with mishandling of handheld exploration equipment.
- Socio-economic Impacts

The potential impacts listed above were pre-identified. More potential impacts will be identified as the EA process progresses i.e. upon site visit and consultation with the public. All impacts and public concerns/comments will be incorporated and addressed in the Environmental Assessment Report.


6.3 Public Consultation

Public consultation is an important part of EA process. During the consultation process, interested or affected members of the public are given an opportunity to find out more about the activity and raise any issues or concerns pertaining to the environmental assessment.

To comment or receive further information on the project, please register with Excel Dynamic Solutions (Pty) Ltd (contact details below) as an Interested and Affected Party (I&AP).

All registered I&APs will be kept informed throughout the various stages of the project and will be provided the opportunity to comment on the Scoping Report.





Excel Dynamic Solutions

Contact: Ms. Rose Mtuleni Tel: +264 61 259 530

Fax: +264 886 560 836 Email: info@edsnamibia.com

I hereby wish to register as an Interested and Affected Party (I&AP) for the EPL 6526 EA process

Name:

Organization:

Postal address:

Email:

Phone #:

Fax #:

My initial comments, issues or concerns are:

Other individuals, stakeholders, organizations or entities that should be registered are:

Name:

Organization:

Email:

Phone #: _____

Fax #: _____

Please return details to: **Ms. Rose Mtuleni / Ms. Althea C. Brandt**

P O Box 997154, Maerua Mall, Windhoek

Appendix A:

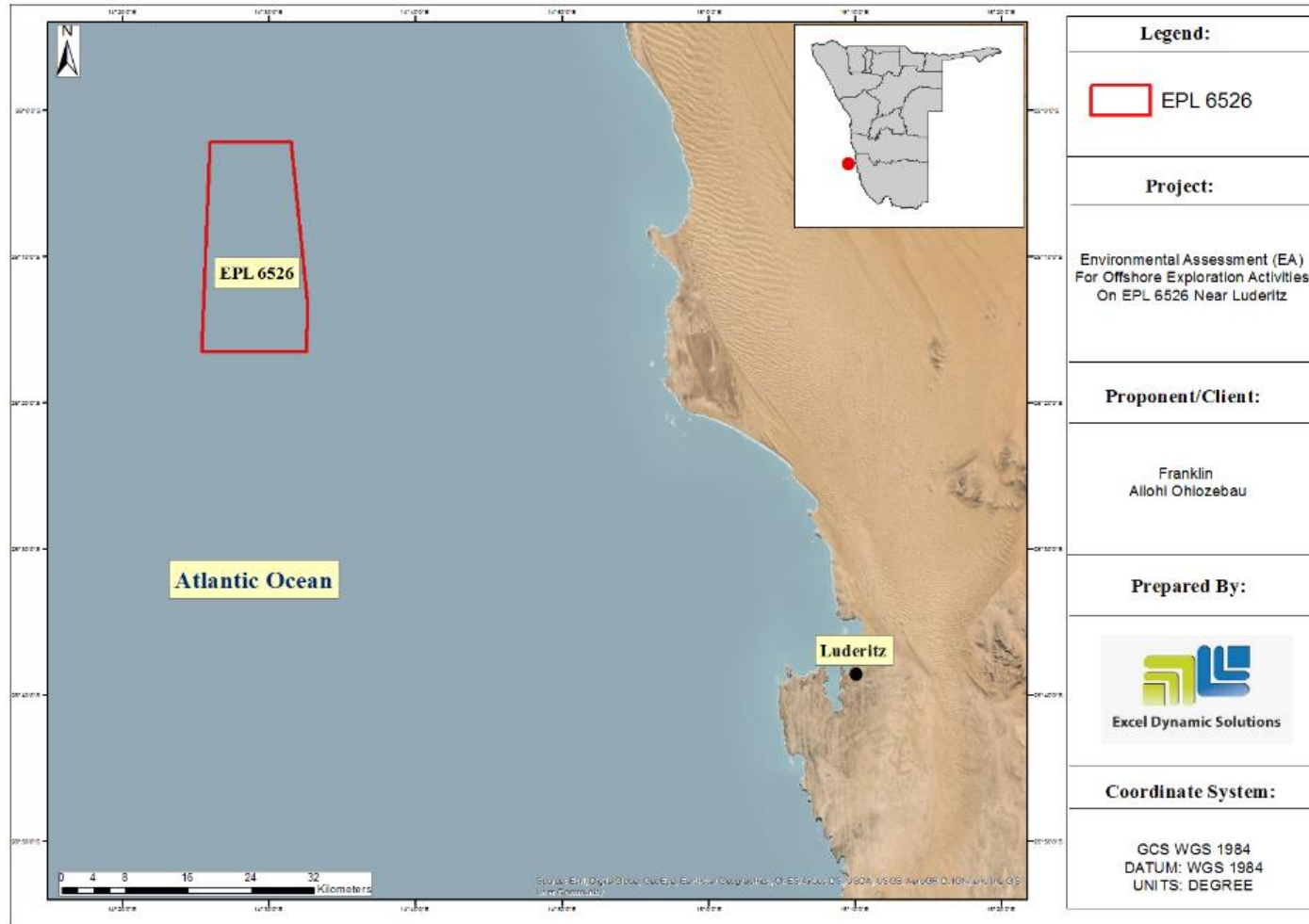
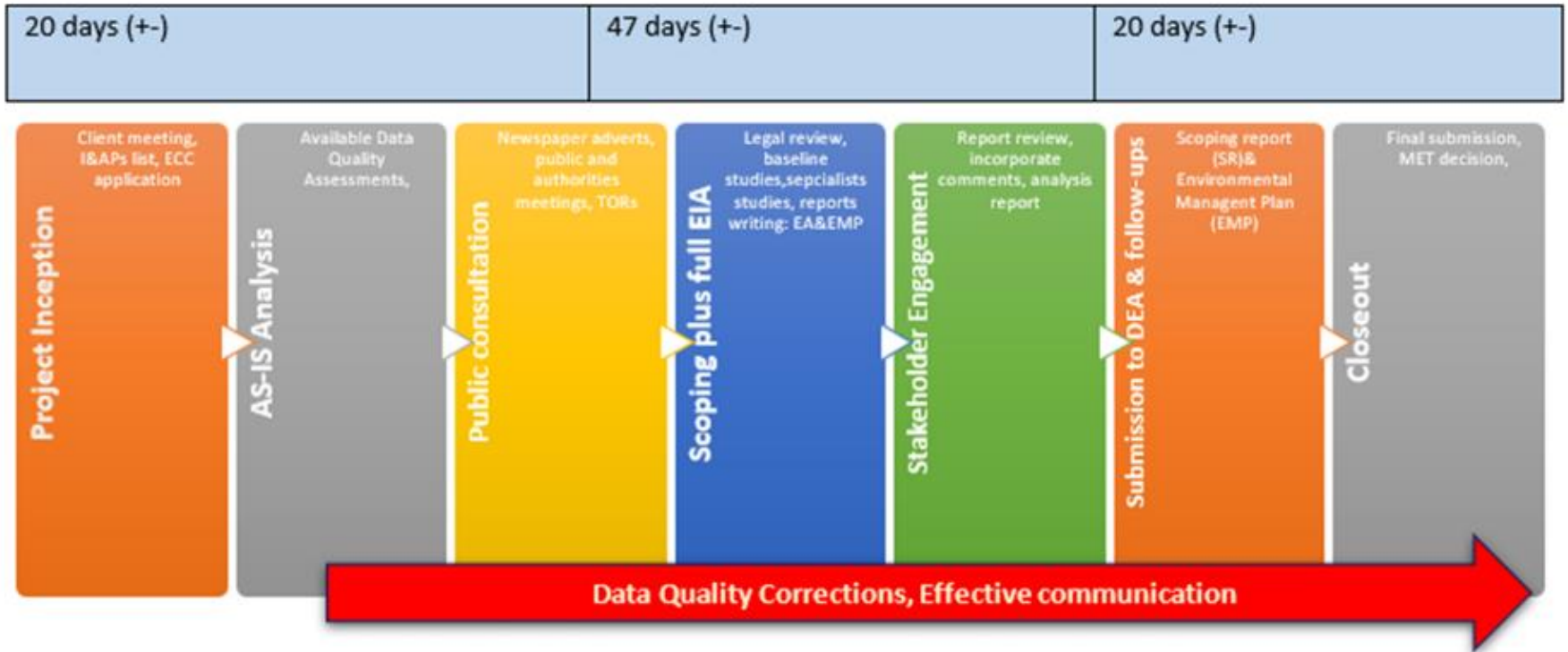


Figure 6: Location of EPL no. 6526 near Lüderitz, in the Kharas Region

Appendix B

Table 1: *Project approach and implementation plan*



List of Interested and Affected Parties (I&APs)

Environmental Assessment for the Exclusive Prospecting Licence (EPL) NO. 6526 in the ||Kharas Region

No	Name	Position
Ministry of Environment, Forestry and Tourism (Department of Environmental Affairs)		
1.	Mr. Teofillus Nghitila	Executive Director
2.	Mr. Timoteus Mafeti	Environmental Commissioner
Mr. Franklin Ailohi Ohiozebau (Proponent)		
3.	Mr. Franklin Ailohi Ohiozebau	Senior Manager
Ministry of Works and Transport		
4.	Mr Esther Kaapanda	Executive Director
5.	Ms. Monica A. Uupindi	Personal Assistant to Executive Director
Ministry of Agriculture and Land Reform		
6.	Mr. Percy Misika	Executive Director
7.	Mr John Hailwa	Directorate of Forestry - Director
Ministry of Urban and Rural Development		

No	Name	Position
8.	Mr. N Daniel	Executive Director
9.	Ms. Rosalia Ruben	Secretary to Executive Director
10.	Ms. B. van Wyk	Personal assistant to the ED
Ministry of Health and Social Services		
11.	Mr. Ben Nangombe	Executive Director
12.	Ms. Petty Tjaimba	Personal Assistant to the Executive Director
Ministry of Industrialisation, Trade & SME Development		
13.	Mr. Gabriel Sinimbo	Permanent Secretary
14.	Mr Calicious Tualife	Deputy Director: Industrial Policy, Planning, & Development
Roads Authority		
15.	Mr C. M. Lutombi	Chief Executive Officer
16.	Mr E. de Paauw	Senior Specialist Road Legislation, Advice & Compliance NP&C
 Kharas Regional Council		
17.	Hon. Aletha Frederick	Governor
18.	Hon. Jan Scholtz	Governor Chair person
19.	Mr. Beatus Okeri Kasete	Chief Regional Officer

No	Name	Position
Luderitz Town Council		
20.	Hon. Cllr. Hilaria Mukapuli	Mayor / Chairperson of Council
21.	Hon. Cllr: Brigitte Fredericks	Deputy Mayor
22.	Ms. Aunie Gebhard	CEO
Owners / Occupiers of Land and Neighbouring Property Owners		
23.	Coleen Mannheimer	Botanist
24.	Dr Jessica Kemper	Seabird / Conservation Biologist