

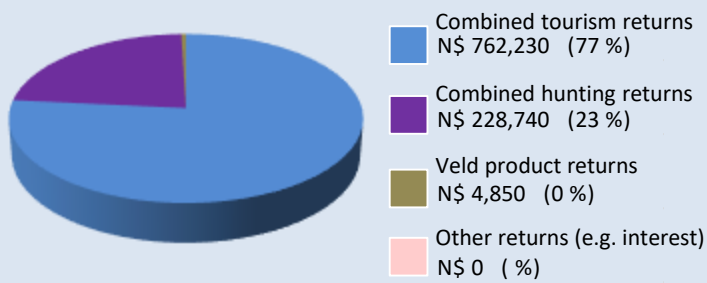
maximising wildlife returns by minimising threats...

Conservancy status summary

Returns from natural resources in 2017

the chart shows the main sources of returns and values and their percentage of the total returns

Approximate Total Returns N\$ 995,820



Two of the most significant returns for the conservancy:

- ✓ cash income to the conservancy to cover running costs and invest in developments
- ✓ employment to conservancy residents

Conservancy income		N\$ 283,920	
Employment	Private Sector	16 staff	N\$ 197,360
	Conservancy	8 staff	N\$ 64,930

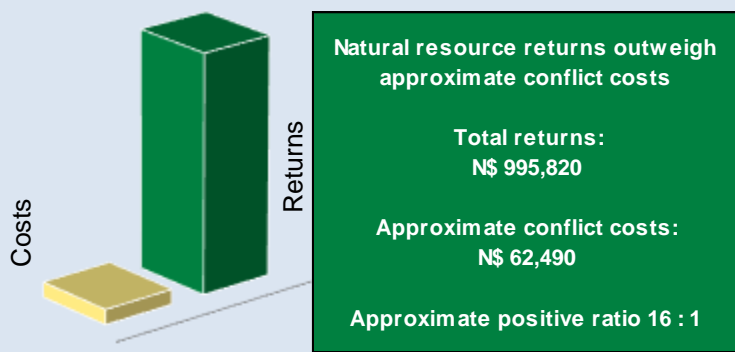
Cost of natural resource conflicts in 2017

estimates are based on average national values

Estimated human wildlife conflict cost	N\$ 62,490
Estimated poached high value species loss	N\$ 0
Total conflict cost estimate	N\$ 62,490

Natural resource cost-return ratio in 2017

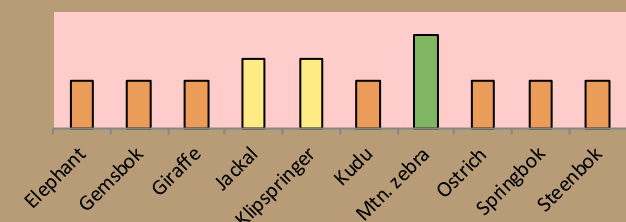
the chart shows the approximate ratio of returns to costs



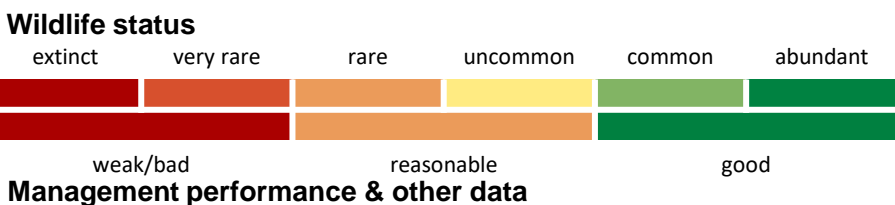
Management performance in 2017

Category	Performance
1 Adequate staffing	Good
2 Adequate expenditure	Good
3 Audit attendance	Good
4 NR management plan	Good
5 Zonation	Good
6 Leadership	Good
7 Display of material	Good
8 Event Book modules	Good
9 Event Book quality	Good
10 Compliance	Good
11 Game census	Good
12 Reporting & adaptive m/ment	Good
13 Law enforcement	Good
14 Human Wildlife Conflict	Weak
15 Harvesting management	Good
16 Sources of NR income	Good
17 Benefits produced	Good
18 Resource trends	Weak
19 Resource targets	Good

Wildlife status summary in 2017



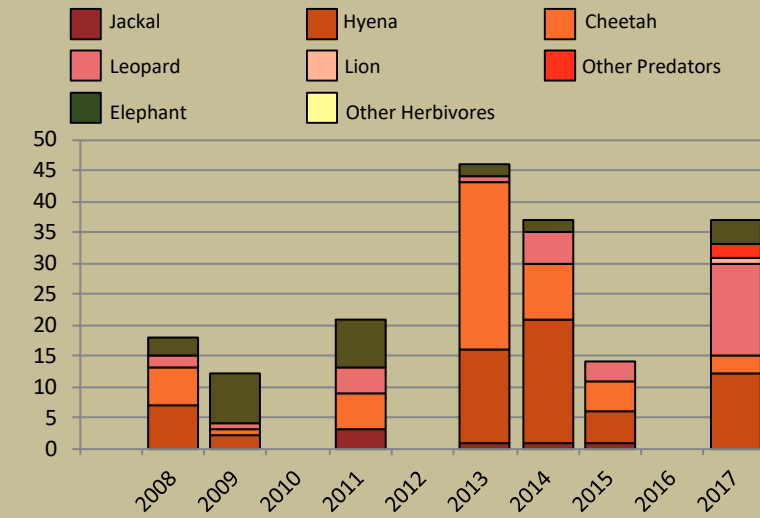
Key to the status barometer



Human wildlife conflict

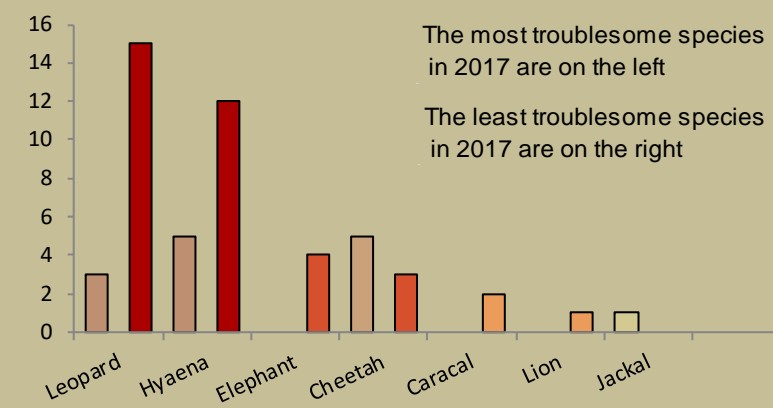
Human wildlife conflict trend

the chart shows the total number of incidents each year, subdivided by species, grouped as herbivores and predators



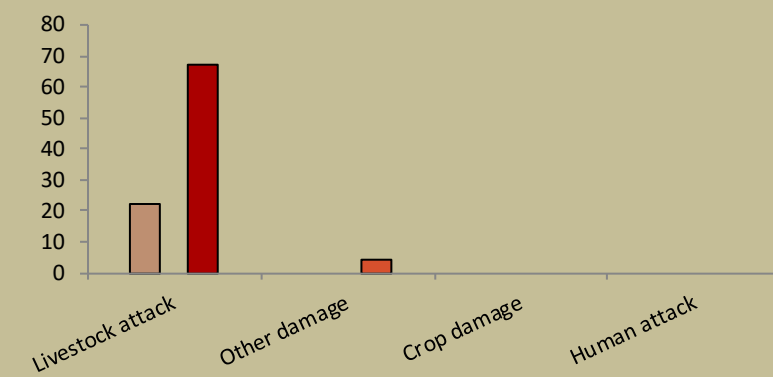
Most troublesome problem animals 2015-2017

the chart shows the number of incidents per species for the last 3 years; the darkest bar (on the right) indicates the current year for each species



Type of damage by problem animals 2015-2017

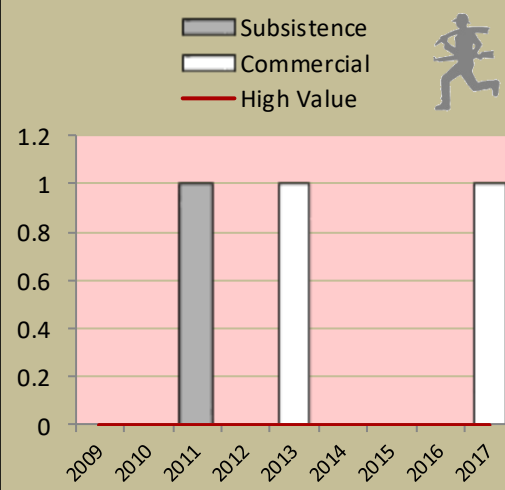
the chart shows the number of incidents per category for the last 3 years; the darkest bar (on the right) indicates the current year for each type



Poaching

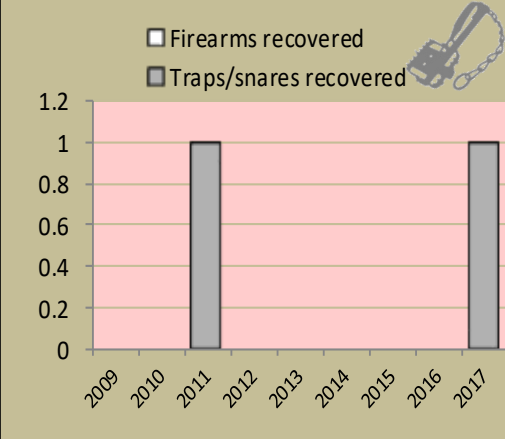
Number of incidents per year

Commercial poaching is a serious threat to conservancy benefits. The chart shows the number of incidents per category



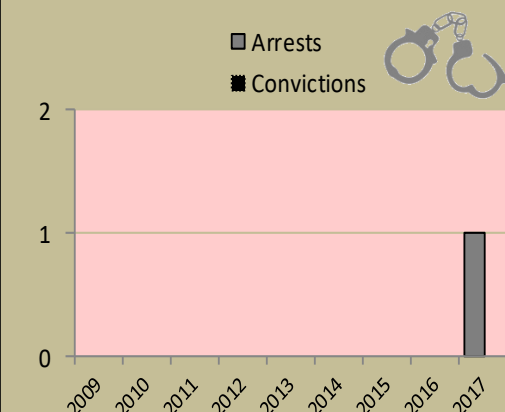
Traps and firearms recovered

number of incidents per category



Arrests and convictions

number of incidents per category



Wildlife removals – quota use and value

Species	Quota 2017			Animals actually used in 2017					Potential Trophy Value N\$	Potential Other use Value N\$	
	Total	Trophy	Other Use	Trophy	Own Use & Premium	Shoot & Sell	Capture & Sale	Problem Animal			Total Use
Baboon	5	5		5					5	600	
Caracal	2	2		2					2	2,400	
Cheetah	2	2		2					2	14,000	
Duiker	2	2		2					2	2,400	
Gemsbok	7	4	3	4	3				7	4,200	2,592
Jackal	5	5		5					5	500	
Klipspringer	2	2		2					2	5,200	
Kudu*	14	5	9	5	7				14	9,400	69,750
Leopard	1	1		1					1	32,900	
Ostrich	10	5	5	5	5				10	2,000	720
Springbok	10	5	5	2					2	2,700	624
Steenbok	2	2								3,500	
Mtn Zebra	10	5	5	5	5				10	5,600	3,984

Potential value estimates (N\$) for species are based on:

- Potential trophy value - the average trophy value for that species in the conservancy landscape - trophy values vary depending on trophy quality, international recognition of the hunting operator and the hunting area
- Potential other use value - the average meat value for common species - the average live sale value of each high value species (indicated with an *) [high value species are never used for meat]

Conservancies reduce environmental costs while increasing environmental returns. Returns from wildlife can far outweigh human wildlife conflict costs.



monitoring numbers and trends for a healthy conservancy...

Current wildlife numbers and status

Species	Animals Seen 2017	Estimated population range	Wildlife Status		
			Count Trend	National Guideline	Desired Status
Elephant			Red	Yellow	
Gemsbok			Red	Orange	
Giraffe			Red	Yellow	
Jackal	3		Yellow		
Klipspringer	12		Yellow		
Kudu	11	65 - 270	Red	Orange	
Mtn. zebra	43	235 - 310	Green	Yellow	
Ostrich			Red	Yellow	
Springbok	4	33 - 90	Red	Yellow	
Steenbok	5	20 - 210	Red	Yellow	

Wildlife Status

Count trend – gives the species status in the conservancy based on game count trend data.

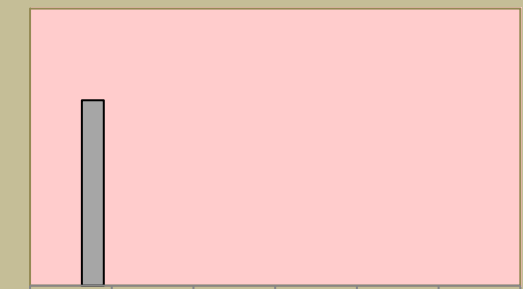
Landscape status – gives the species status in the focal landscape; for example, lions may cause local problems, but are of high value and may be rare at landscape level.

Desired number – gives the species status in the conservancy based on what the conservancy would like to have.

dark green (abundant) – there should be less;
light green (common) – the desired number is reached;
yellow (uncommon) – there should be more;
light orange (rare) – there should be more than double;
dark orange (very rare) – there should be more than triple;
red (extinct) – the species needs to be reintroduced.

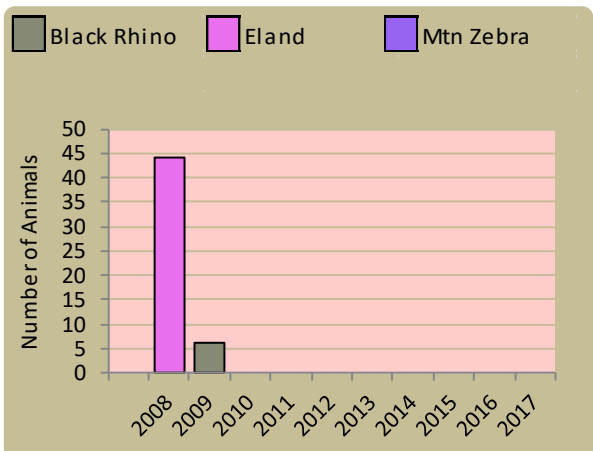
Locally rare species

Sightings indicator ■ 2015 ■ 2016 ■ 2017

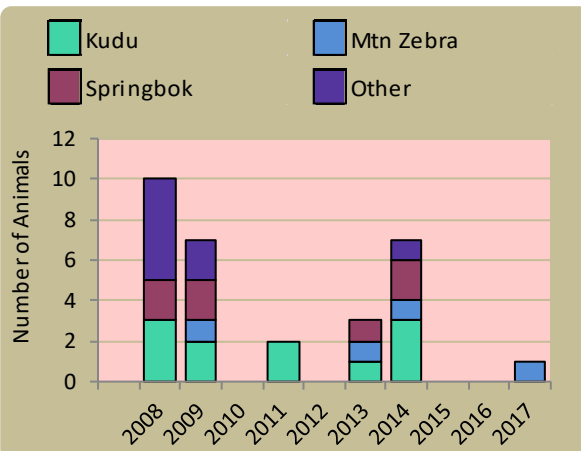


Locally rare and endangered species are not found very often in the conservancy and need special conservation attention.

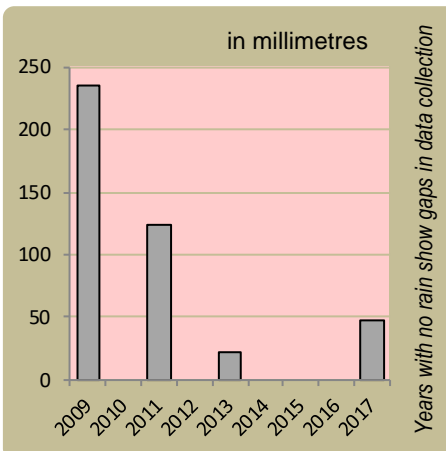
Wildlife introductions



Wildlife mortalities

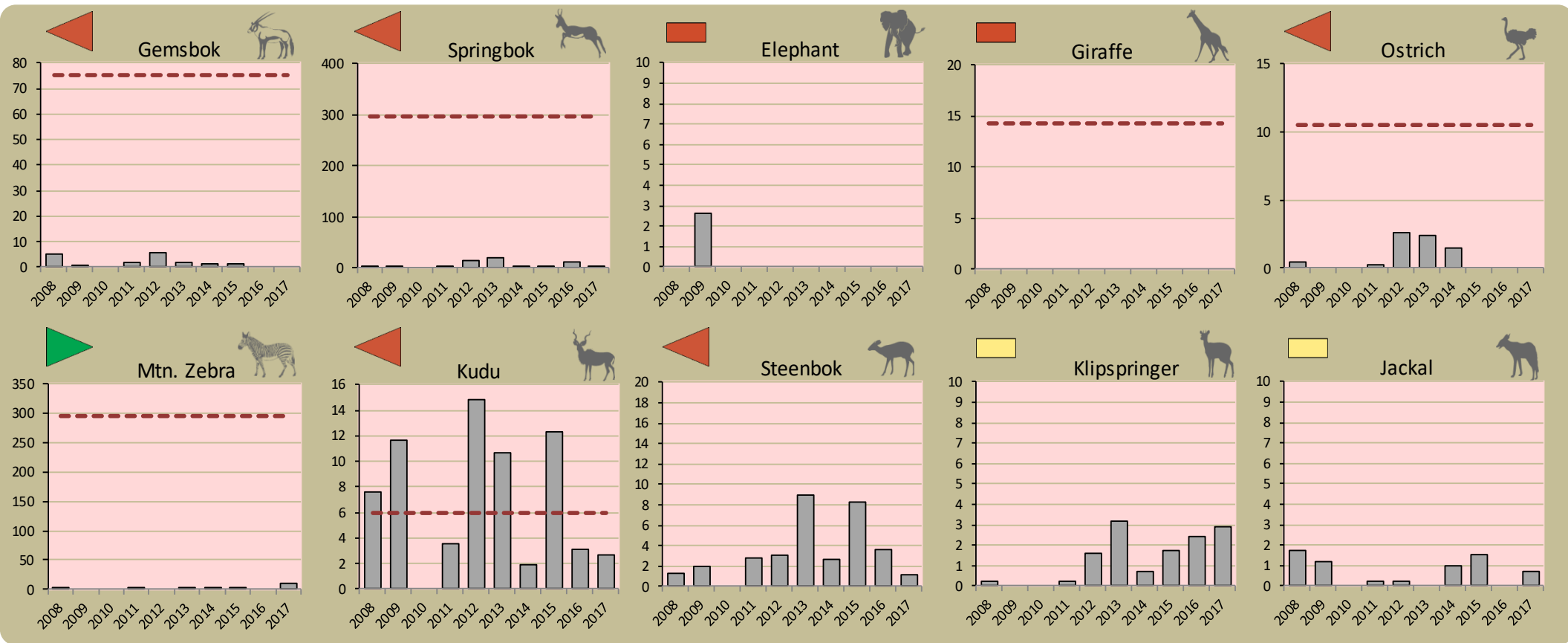


Annual rainfall



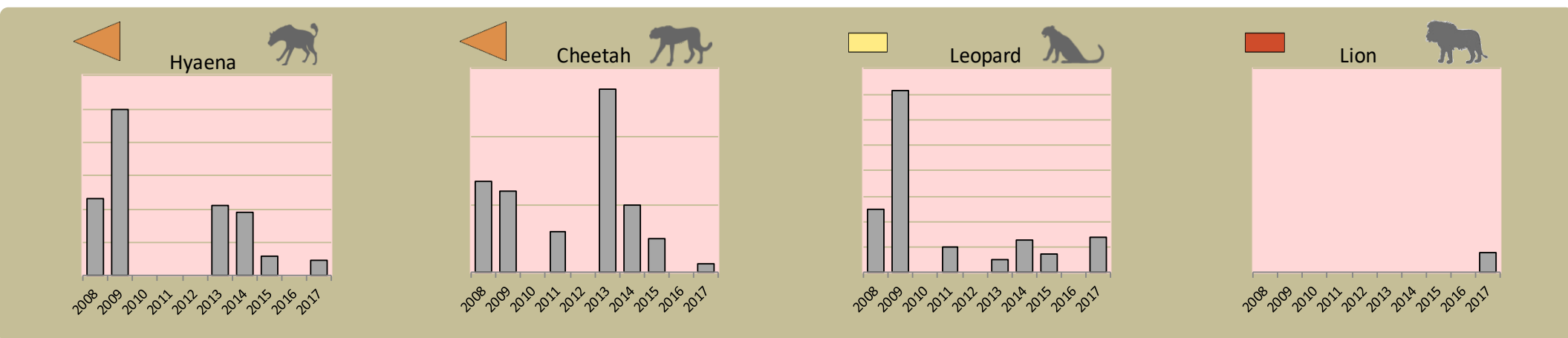
Annual game count

Charts show the number of animals seen each year per 100 km driven during the game count. As a point of reference the dashed horizontal line represents the combined 10 year average in Palmwag and Etendeka concessions. Status barometers reflect the general count trend over the last 5 years



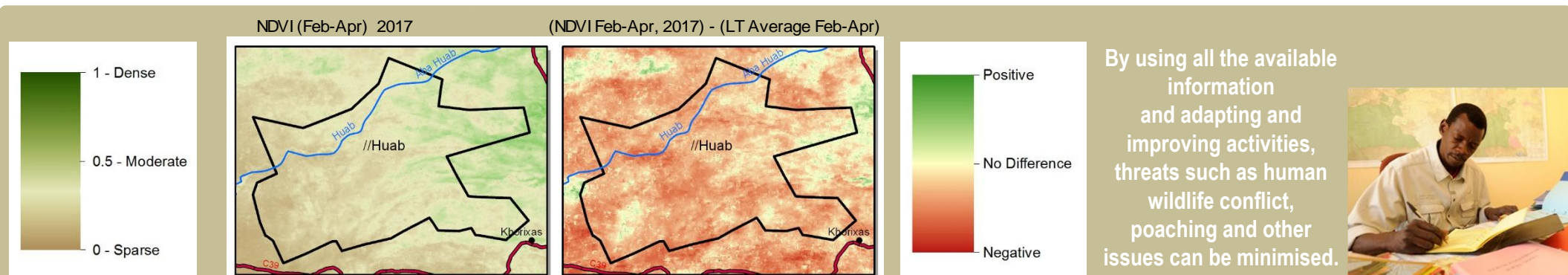
Predator monitoring

charts show the average number of animals seen per Event Book each year status barometers reflect the general sightings trend over the last 5 years



Vegetation monitoring

Green vegetation index (NDVI). Maps show vegetation cover during Feb-April of the current year and the difference between the current year and the long term average (2001-2016)



Enabling wise conservancy governance...

Conservancy statistics

Date Registered:	July 2003
Population (2011 census):	770
Size (square kilometres):	1817

Conservancy Governance

Number of management committee members:	Men: 4; Women: 7
Date of last AGM:	Sat, February 11, 2017
Attendance at AGM:	Men: ; Women:
Date of next AGM:	Sat, March 3, 2018
Other important issues	
Financial report approved?	✗
Budget approved?	✓
Work plan approved?	✓
Chairperson's report approved?	✓

Key Compliance Requirements

Was an AGM held?	✓
Were elections held?	✓
Is there a Benefit Distribution Plan?	✓
Is there a Game Management and Utilisation Plan?	✓
Was an Annual Financial Report produced?	✗



Employment

Conservancy staff: Male	6
Female	2
Community game guards:	6
Community resource monitors:	0
Lodge staff: Male	6
Female	3

Benefits

Cash	In Kind
Traditional Authority	Meat And Food Contribution
Funeral Assistance	Meat Distribution
Community Projects	
Haccis	
Hwc Offset	

Conservancy Self Evaluation

How well does the conservancy consider it has performed in the past year?

Effectiveness of implementation	Poor	Fair	Good	Prev. Year	Explanation of effectiveness rating
Game Management and Utilisation					Manpower and willingness from the conservancy was abundant
Zonation Plan					There has been a lot of effort from stakeholders and the community is also showing willingness to engage
Benefit Distribution					All members got their shares
Human Wildlife Conflict Management					At times it is difficult for the conservancy management to reach communities affected by HWC
Sustainable Business and Financial Planning					The conservancy does not have a SBF Plan but will work on it in the future
Tourism					Success will depend on the answers from the stakeholders
Staff Management					The conservancy is still waiting for the training and assistance with contracts
Assets Management/Register					
HIV/AIDS					
Communication					