

Not all data or species are shown on this report; use your Event Book for more information

monitoring numbers and trends for a healthy conservancy...

Current wildlife numbers and status

Species	Animals Seen 2016	Estimated population range	Wildlife Status		
			Count Trend	National Guideline	Desired Status
Duiker				Yellow	
Elephant				Dark Orange	
Gemsbok				Light Orange	
Giraffe				Dark Orange	
Jackal				Light Green	
Klipspringer				Red	
Kudu				Light Orange	
Mtn. zebra				Red	
Ostrich				Dark Orange	
Springbok				Yellow	

Wildlife Status

Count trend – gives the species status in the conservancy based on game count trend data.

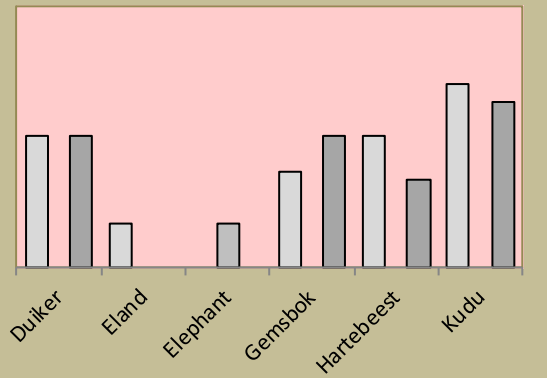
National guideline – gives the species status in the conservancy using national guidelines for the conservancy; for example, lions may cause local problems, but are of high value and are rare at landscape level.

Desired number – gives the species status in the conservancy based on what the conservancy would like to have.

dark green (abundant) – there should be less;
light green (common) – the desired number is reached;
yellow (uncommon) – there should be more;
light orange (rare) – there should be more than double;
dark orange (very rare) – there should be more than triple;
red (extinct) – the species needs to be reintroduced.

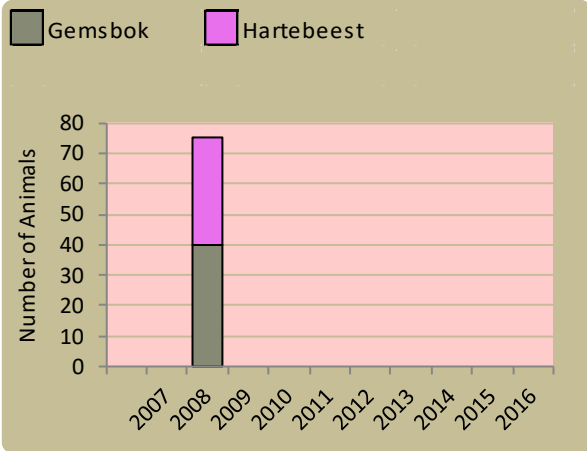
Locally rare species

Sightings indicator □ 2014 □ 2015 □ 2016

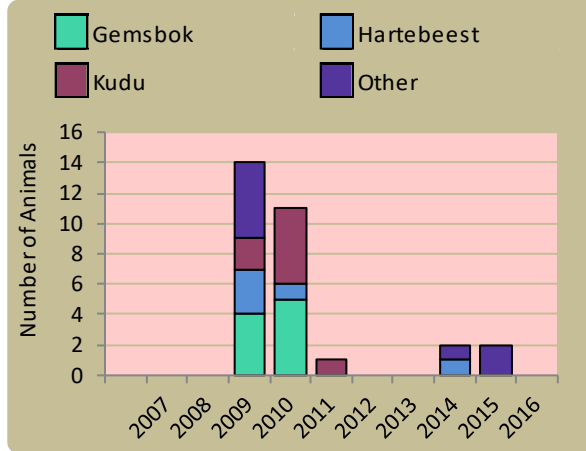


Locally rare and endangered species are not found very often in the conservancy and need special conservation attention.

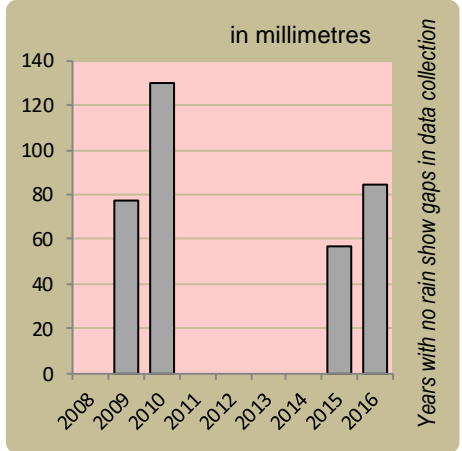
Wildlife introductions



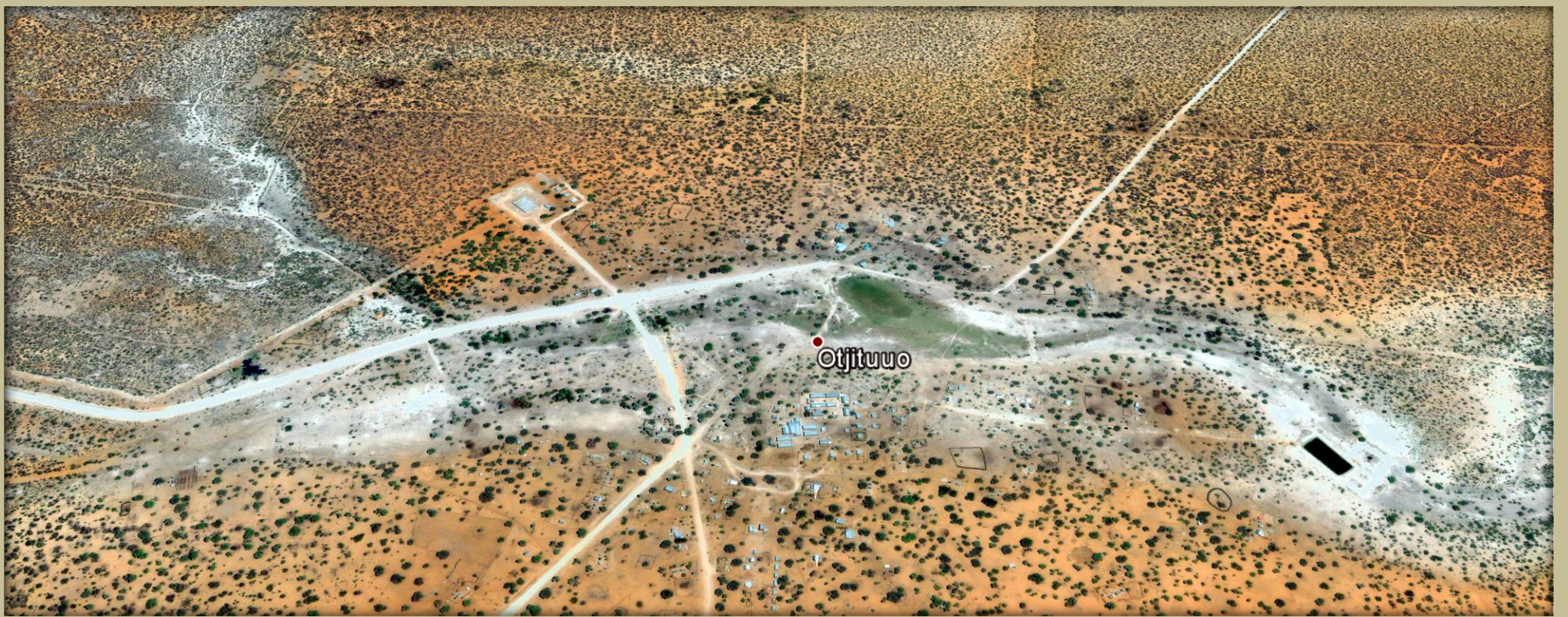
Wildlife mortalities



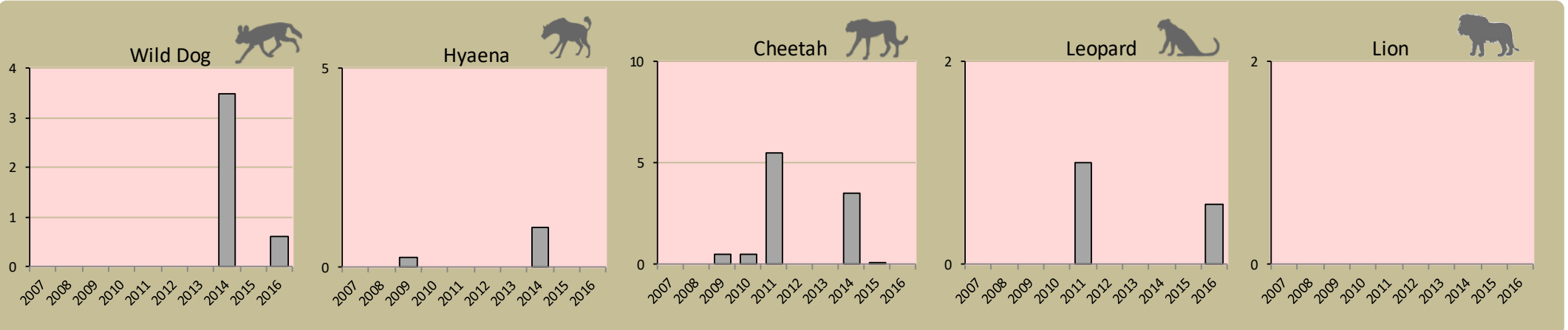
Annual rainfall



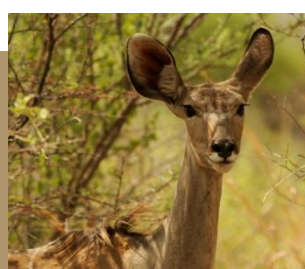
Annual game count *currently not done*



Predator monitoring *charts show the average number of animals seen per Event Book each year status barometers reflect the general sightings trend over the last 5 years*



Wildlife provides a wide range of benefits. Some wildlife can cause conflicts, but all wildlife is of value to tourism, trophy hunting and a healthy environment.



By using all the available information and adapting and improving activities, threats such as human wildlife conflict, poaching and other issues can be minimised.



Enabling wise conservancy governance...

Conservancy statistics

Date Registered:	September 2005
Population (2011 census):	5790
Size (square kilometres):	6134

Conservancy Governance

Number of management committee members:	15
Date of last AGM:	
Attendance at AGM:	Men: 35; Women: 25
Date of next AGM:	Tue, February 14, 2017
Other important issues	
Budget approved?	✗
Work plan approved?	✓

Constitutional adherence

Approved constitution	✓
AGM held	✗
Management and utilisation plan	✗
Financial annual report approved at AGM	✗
Financial report external review	✗
Benefit distribution plan	✓



Employment

Conservancy staff: Male	1
Female	1
Community game guards:	9
Community resource monitors:	0
Lodge staff: Male	0
Female	0

Benefits

Cash	In Kind

Conservancy Self Evaluation How well does the conservancy consider it has performed in the past year?

Effectiveness of implementation	Poor	Fair	Good	Explanation of effectiveness rating
Game Management and Utilisation				Not implemented.
Zonation Plan				Not at all.
Benefit Distribution				There is no income at all for them to be active.
Human Wildlife Conflict Management				Partially.
Sustainable Business and Financial Planning				
Tourism				Not at all. We applied but it was not approved.
Staff Management				Partially.
Assets Management/Register				
HIV/AIDS				We share information with the community.
Communication				Effective at sharing information with members.