

Not all data or species are shown on this report; use your Event Book for more information

monitoring numbers and trends for a healthy conservancy...

Current wildlife numbers and status

Species	Animals Seen	Estimate	Wildlife Status		
			Count Trend	National Guideline	Desired Number
B. Zebra			Red	Yellow	
Duiker			Red	Orange	
Elephant			Red	Green	
Giraffe			Red	Red	
Impala			Red	Yellow	
Kudu			Red	Red	
Roan			Red		
Sable			Red		
Steenbok			Red	Yellow	
Warthog			Red	Yellow	

Wildlife Status

Count trend – gives the species status in the conservancy based on game count trend data.

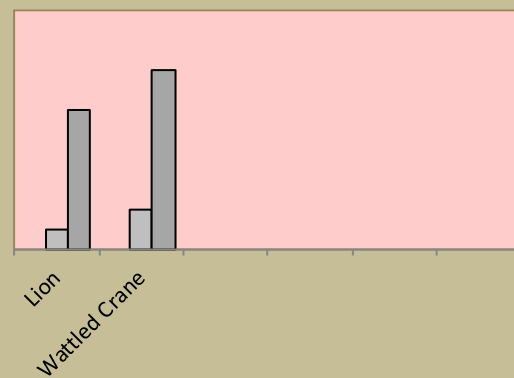
National guideline – gives the species status in the conservancy using national guidelines for the conservancy; for example, lions may cause local problems, but are of high value and are rare at landscape level.

Desired number – gives the species status in the conservancy based on what the conservancy would like to have.

dark green (abundant) – there should be less;
light green (common) – the desired number is reached;
yellow (uncommon) – there should be more;
light orange (rare) – there should be more than double;
dark orange (very rare) – there should be more than triple;
red (extinct) – the species needs to be reintroduced.

Locally rare species

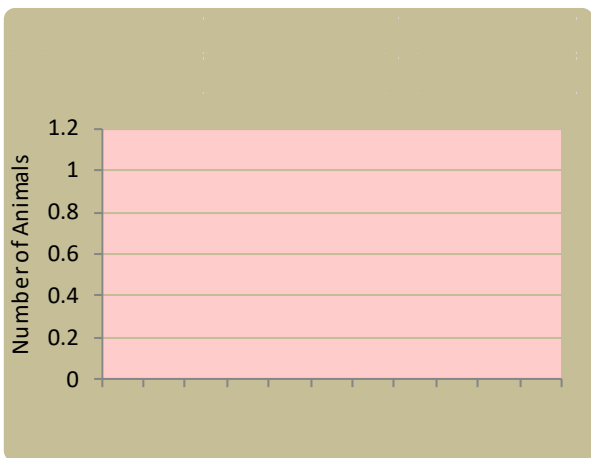
Sightings indicator □ 2014 □ 2015 □ 2016



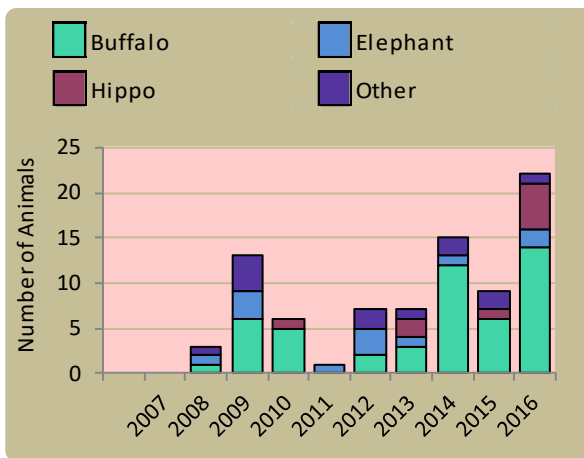
Locally rare and endangered species are not found very often in the conservancy and need special conservation attention.



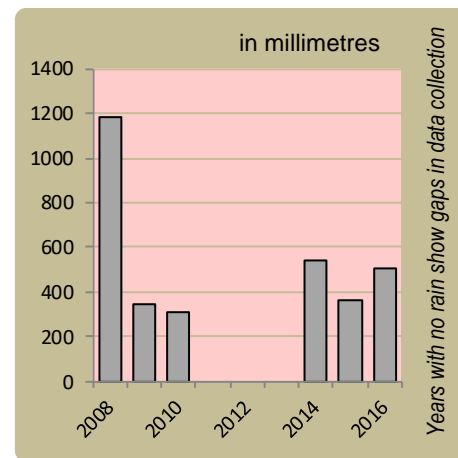
Wildlife introductions



Wildlife mortalities

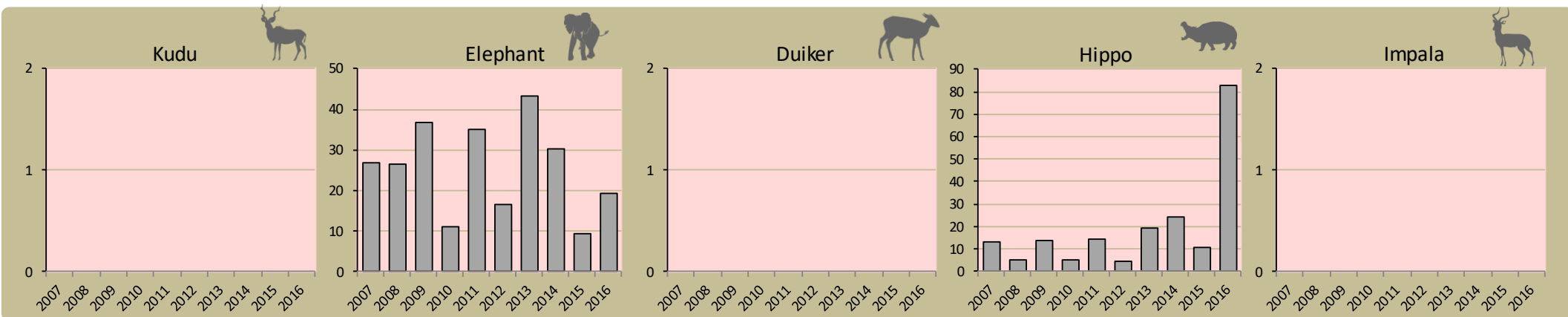


Annual rainfall



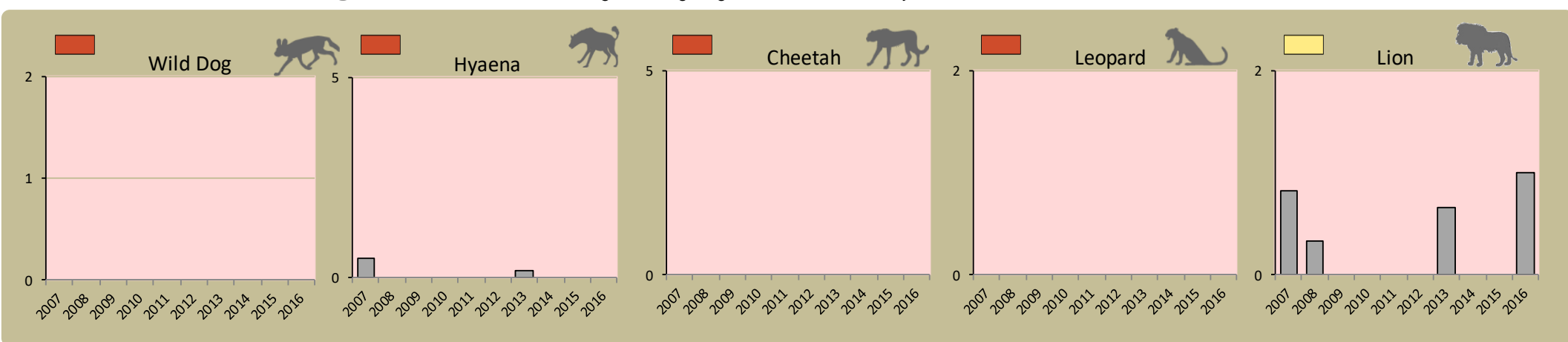
Fixed route patrols

charts show the number of sightings of each species per fixed route foot patrol each year



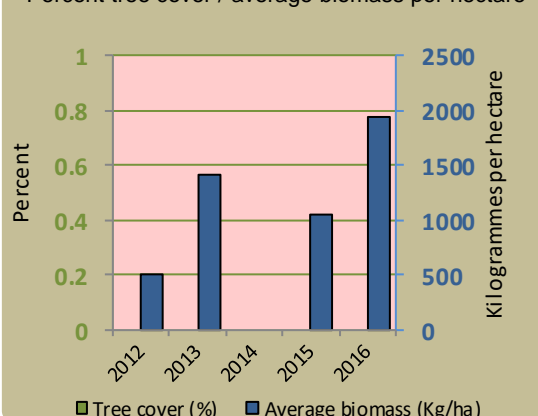
Predator monitoring

charts show the average number of animals seen per Event Book each year status barometers reflect the general sightings trend over the last 5 years



Vegetation monitoring

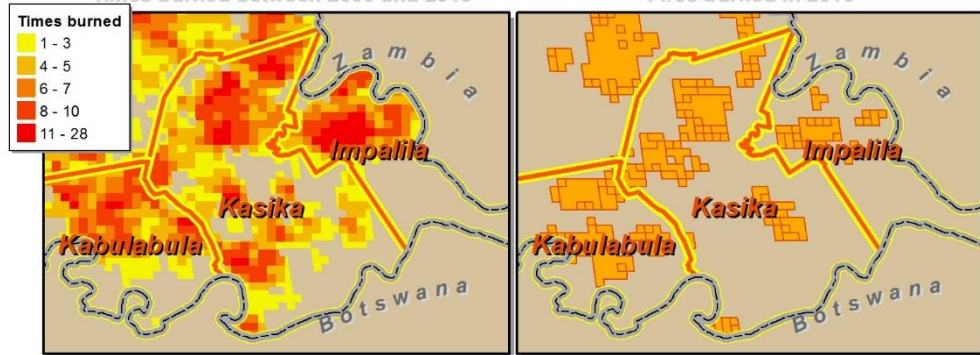
Percent tree cover / average biomass per hectare



Fire monitoring

Times burned between 2009 and 2016

Fires burned in 2016



Wildlife provides a wide range of benefits. Some wildlife can cause conflicts, but all wildlife is of value to tourism, trophy hunting and a healthy environment.



By using all the available information and adapting and improving activities, threats such as human wildlife conflict, poaching and other issues can be minimised.



Enabling wise conservancy governance...

Conservancy statistics

Date Registered:	December 2005
Population (2011 census):	1130
Size (square kilometres):	147

Conservancy Governance

Number of management committee members:	13
Date of last AGM:	Sun, November 27, 2016
Attendance at AGM:	Men: 47; Women: 82
Date of next AGM:	
Other important issues	
Budget approved?	✓
Work plan approved?	✓

Constitutional adherence

Approved constitution	✗
AGM held	✓
Management and utilisation plan	✓
Financial annual report approved at AGM	✓
Financial report external review	✗
Benefit distribution plan	✓



Employment

Conservancy staff: Male	9
Female	11
Community game guards:	5
Community resource monitors:	5
Lodge staff: Male	0
Female	0

Benefits

Cash	In Kind
Traditional Authority	Cash Benefits
Funeral Assistance	Other Benefits
Community Projects	Social Benefits
Haccis	
Hwc Offset	

Conservancy Self Evaluation

How well does the conservancy consider it has performed in the past year?

Effectiveness of implementation	Poor	Fair	Good	Explanation of effectiveness rating
Game Management and Utilisation			✓	All activities done as per plan.
Zonation Plan		✓		Ongoing landuse disputes.
Benefit Distribution			✓	Tangible water projects implemented instead of cash distribution.
Human Wildlife Conflict Management		✓		More awareness is needed by members.
Sustainable Business and Financial Planning		✓		No sustainable business and financial planning in place.
Tourism			✓	Tourism activities are running well.
Staff Management			✓	Staff are well managed.
Assets Management/Register			✓	Proper asset management register in place.
HIV/AIDS		✓		More needs to be done.
Communication			✓	Good communication between management and members.