

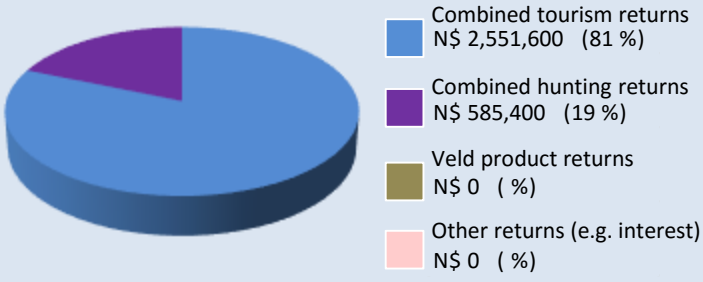
maximising wildlife returns by minimising threats...

## Conservancy status summary

### Returns from natural resources in 2014

the chart shows the main sources of returns and values and their percentage of the total returns

Approximate Total Returns N\$ 3,137,000



### Two of the most significant returns for the conservancy:

- ✓ cash income to the conservancy to cover running costs and invest in developments
- ✓ Employment to conservancy residents

<b>Conservancy income</b>	<b>N\$ 552,000</b>
---------------------------	--------------------

<b>Employment</b>	Private Sector	119 staff	N\$ 2,002,400
	Conservancy	20 staff	N\$ 229,870

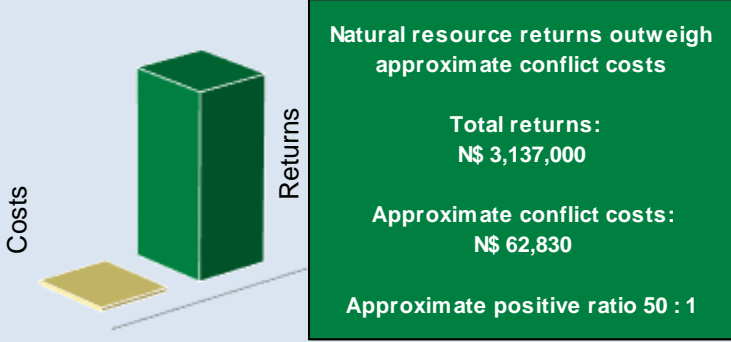
### Cost of natural resource conflicts in 2014

estimates are based on average national values

Estimated human wildlife conflict cost	N\$ 62,830
Estimated poached high value species loss	N\$ 0
<b>Total conflict cost estimate</b>	<b>N\$ 62,830</b>

### Natural resource cost-return ratio in 2014

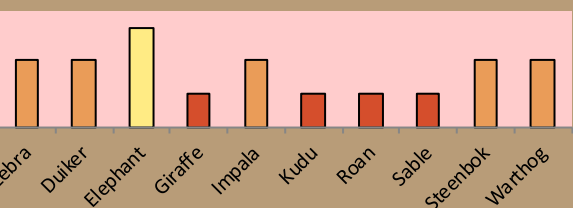
the chart shows the approximate ratio of returns to costs



### Management performance in 2015

Category	Performance
1 Adequate staffing	Good
2 Adequate expenditure	Good
3 Audit attendance	Good
4 NR management plan	Good
5 Zonation	Good
6 Leadership	Good
7 Display of material	Good
8 Event Book modules	Good
9 Event Book quality	Good
10 Compliance	Good
11 Game census	Good
12 Reporting & adaptive m/ment	Good
13 Law enforcement	Good
14 Human Wildlife Conflict	Good
15 Harvesting management	Good
16 Sources of NR income	Good
17 Benefits produced	Good
18 Resource trends	Good
19 Resource targets	Good

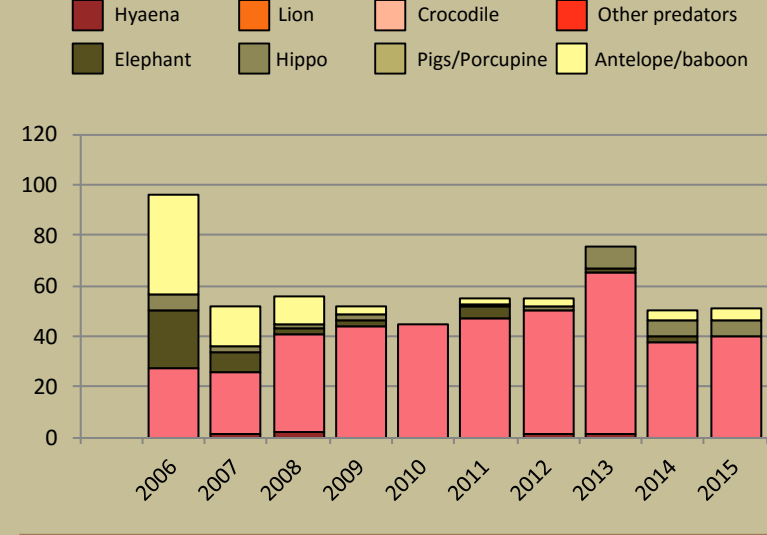
### Wildlife status summary in 2015



## Human wildlife conflict

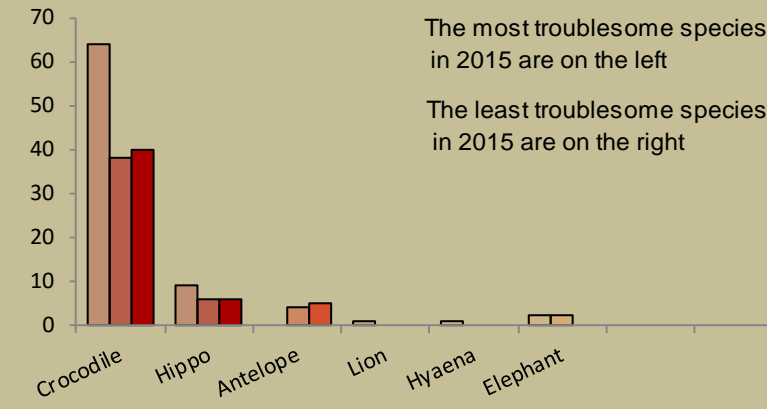
### Human wildlife conflict trend

the chart shows the total number of incidents each year, subdivided by species, grouped as herbivores and predators



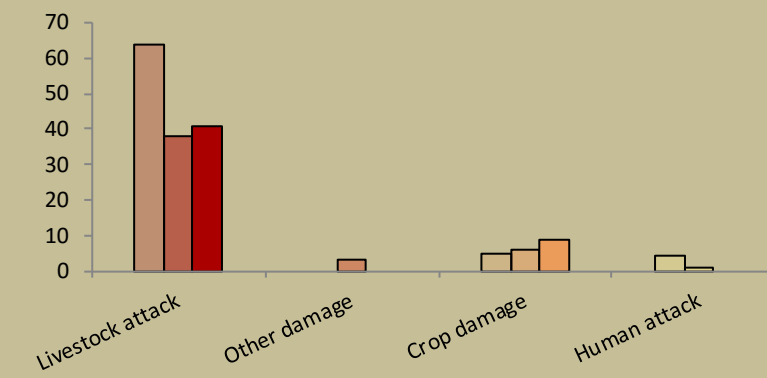
### Most troublesome problem animals 2013-2015

the chart shows the number of incidents per species for the last 3 years; the darkest bar (on the right) indicates the current year for each species



### Type of damage by problem animals 2013-2015

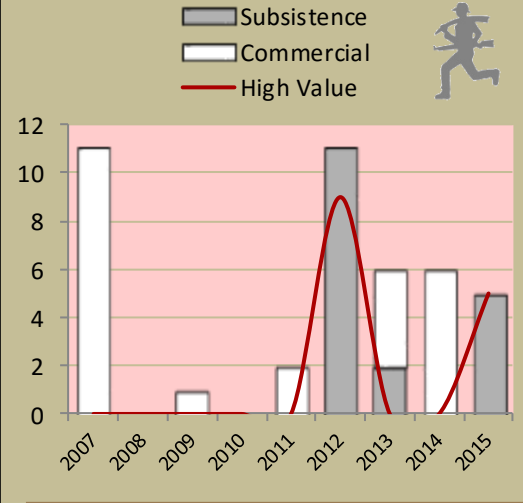
the chart shows the number of incidents per category for the last 3 years; the darkest bar (on the right) indicates the current year for each type



## Poaching

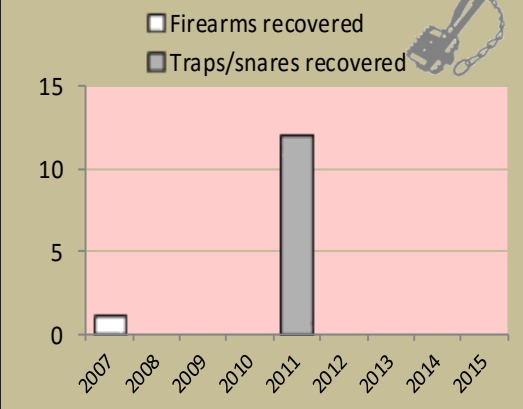
### Number of incidents per year

Commercial poaching is a serious threat to conservancy benefits. The chart shows the number of incidents per category



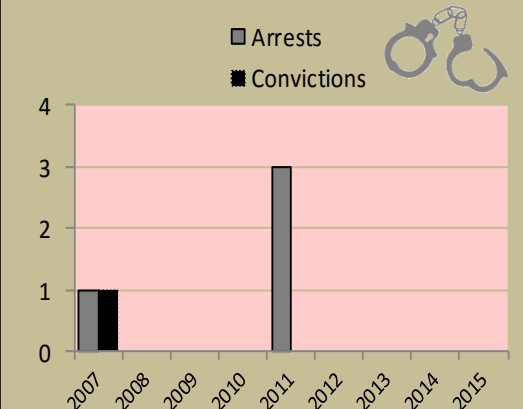
### Traps and firearms recovered

number of incidents per category



### Arrests and convictions

number of incidents per category



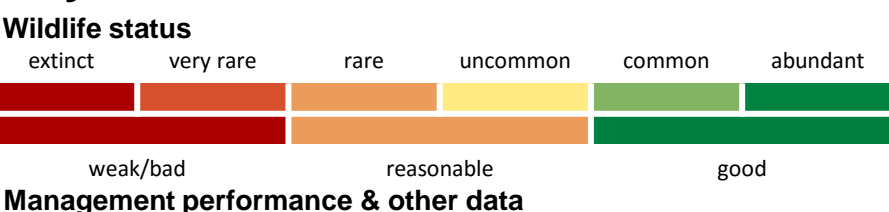
## Wildlife removals – quota use and value

Species	Quota 2015			Animals actually used in 2015					Potential Trophy Value N\$	Potential Other use Value N\$	
	Total	Trophy	Other Use	Trophy	Own Use & Premium	Shoot & Sell	Capture & Sale	Problem Animal			Total Use
Buffalo	11	7	4	6	3				10	76,620	5,500
Crocodile	1	1		1					1	19,155	
Elephant*	5	3	2	2	1				3	204,320	63,600
Hippo	5	3	2	2	1				4	25,540	5,500

Potential value estimates (N\$) for species are based on:

- **Potential trophy value** - the average trophy value for that species in the conservancy landscape
- trophy values vary depending on trophy quality, international recognition of the hunting operator and the hunting area
- **Potential other use value** - the average meat value for common species
- the average live sale value of each high value species (indicated with an \*) [high value species are never used for meat]

## Key to the status barometer



Conservancies reduce environmental costs while increasing environmental returns. Returns from wildlife can far outweigh human wildlife conflict costs.



Not all data or species are shown on this report; use your Event Book for more information

# monitoring numbers and trends for a healthy conservancy...

## Current wildlife numbers and status

Species	Animals Seen	Estimate	Wildlife Status		
			Count Trend	National Guideline	Desired Number
B. Zebra			Red	Yellow	
Duiker			Red	Orange	
Elephant			Red	Green	
Giraffe			Red	Red	
Impala			Red	Yellow	
Kudu			Red	Red	
Roan			Red		
Sable			Red		
Steenbok			Red	Yellow	
Warthog			Red	Yellow	

### Wildlife Status

**Count trend** – gives the species status in the conservancy based on game count trend data.

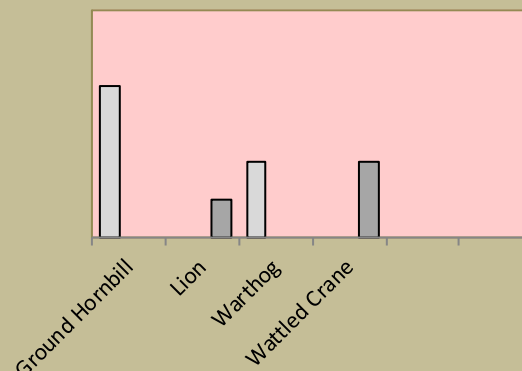
**National guideline** – gives the species status in the conservancy using national guidelines for the conservancy; for example, lions may cause local problems, but are of high value and are rare at landscape level.

**Desired number** – gives the species status in the conservancy based on what the conservancy would like to have.

**dark green** (abundant) – there should be less;  
**light green** (common) – the desired number is reached;  
**yellow** (uncommon) – there should be more;  
**light orange** (rare) – there should be more than double;  
**dark orange** (very rare) – there should be more than triple;  
**red** (extinct) – the species needs to be reintroduced.

## Locally rare species

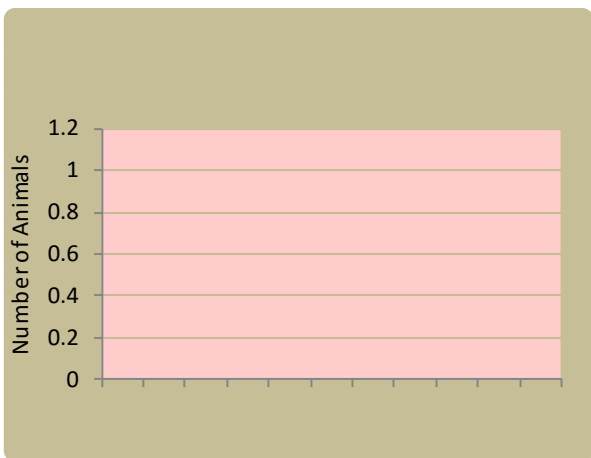
Sightings indicator □ 2013 □ 2014 □ 2015



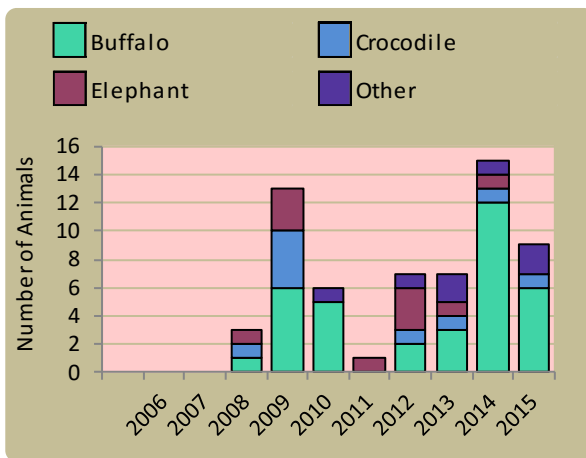
**Locally rare and endangered species** are not found very often in the conservancy and need special conservation attention.



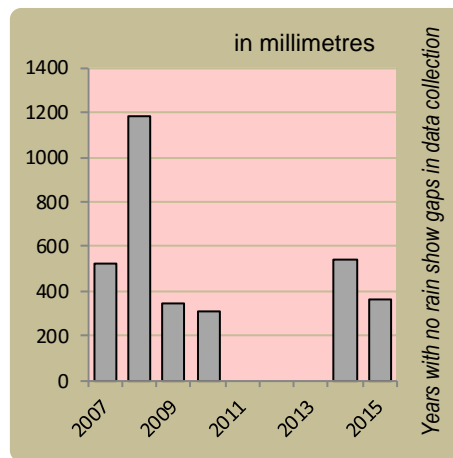
## Wildlife introductions



## Wildlife mortalities

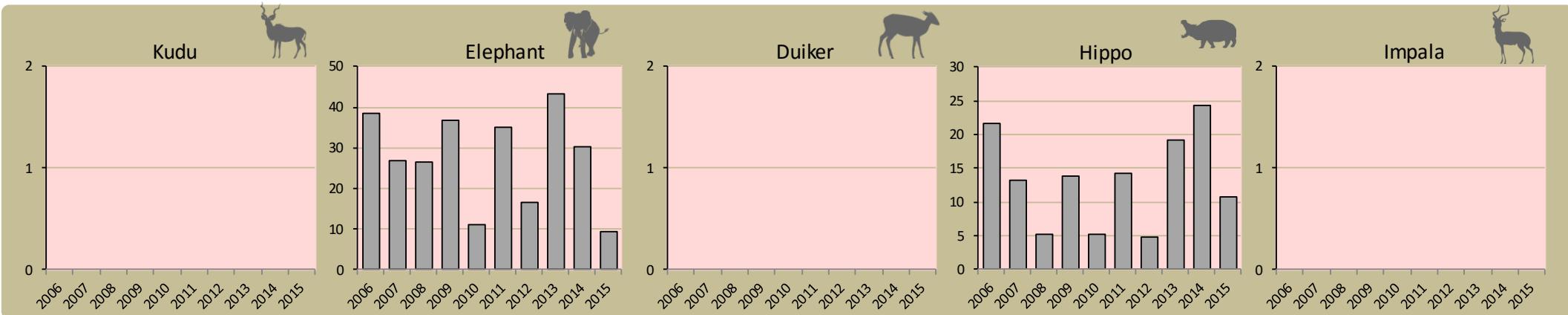


## Annual rainfall



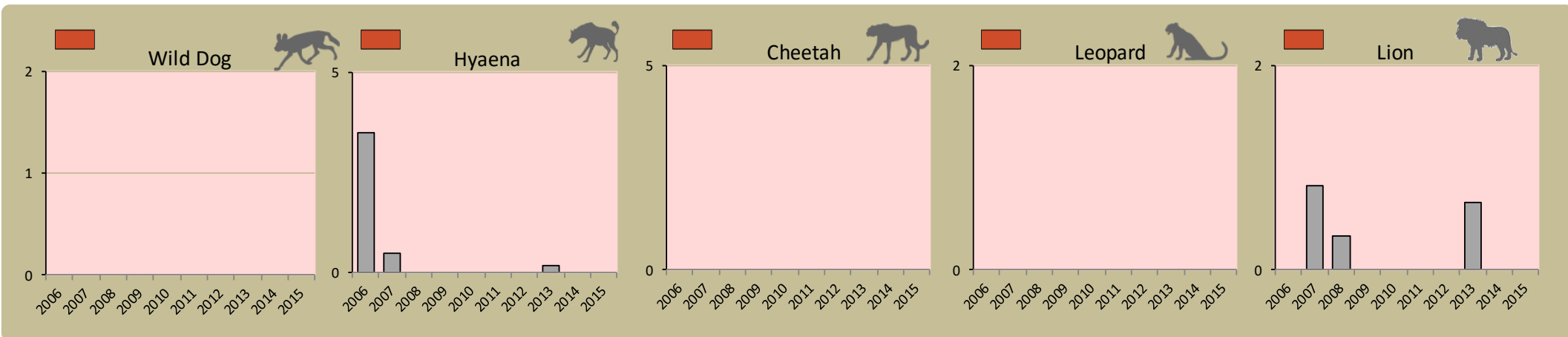
## Fixed route patrols

charts show the number of sightings of each species per fixed route foot patrol each year

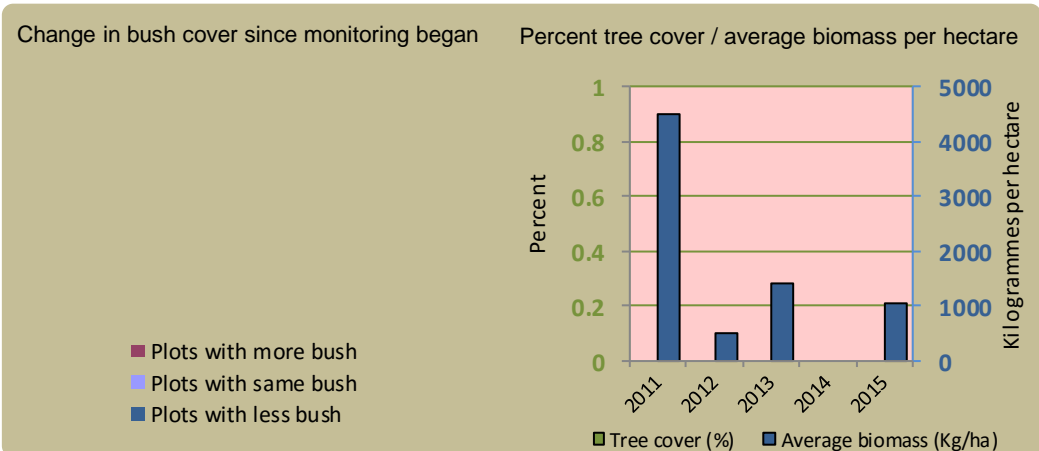


## Predator monitoring

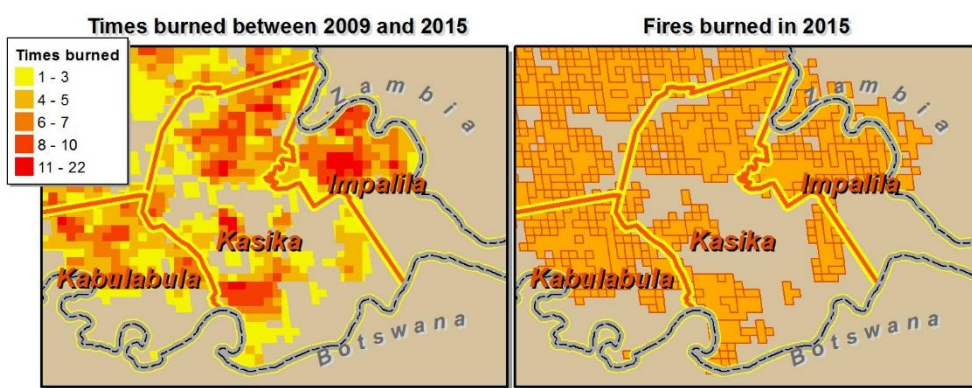
charts show the average number of animals seen per Event Book each year status barometers reflect the general sightings trend over the last 5 years



## Vegetation monitoring



## Fire monitoring



Wildlife provides a wide range of benefits. Some wildlife can cause conflicts, but all wildlife is of value to tourism, trophy hunting and a healthy environment.



By using all the available information and adapting and improving activities, threats such as human wildlife conflict, poaching and other issues can be minimised.



## Enabling wise conservancy governance...

### Conservancy statistics

Date Registered:	December 2005
Members:	914
Size (square kilometres):	147

### Conservancy Governance

Number of management committee members:	13
Date of last AGM:	Mon, November 23, 2015
Attendance at AGM:	Men: 69; Women: 100
Date of next AGM:	Fri, November 25, 2016
<b>Other important issues</b>	
Financial report approved?	✓
Budget approved?	✓
Work plan approved?	✓

### Constitutional adherence

Approved constitution	✓
AGM held	✓
Management and utilisation plan	✓
Financial annual report approved at AGM	✓
Financial report external review	✓
Benefit distribution plan	✓



### Employment

Conservancy staff: Male	12
Female	7
Community game guards:	7
Community resource monitors:	1
Lodge staff: Male	0
Female	0

### Benefits

Meat Distribution - Members	
-----------------------------	--

### Conservancy Self Evaluation

How well does the conservancy consider it has performed in the past year?

Effectiveness of implementation	Poor	Fair	Good	Explanation of effectiveness rating
Game Utilisation and Management Plan				Still cases of poaching and some outsiders disturbing wildlife
Zonation Plan				Hunting and tourism conflicts, zones re-allocation.
Natural Resource Plan				Intensive monitoring of our natural resources still required.
Human Wildlife Conflict Plan				Plan effectively implemented.
Tourism Plan				
Sustainable Financial Plan				
Benefit Distribution Plan				Members supporting the idea of investing their monies in projects - i.e the planned hostel.
Staff Plan				Staff implementing the policy and effective implementation of activities.
Assets Plan				Need to improve the asset management
HIV/AIDS Plan				
Communication Plan				Members receive information on conservancy activities