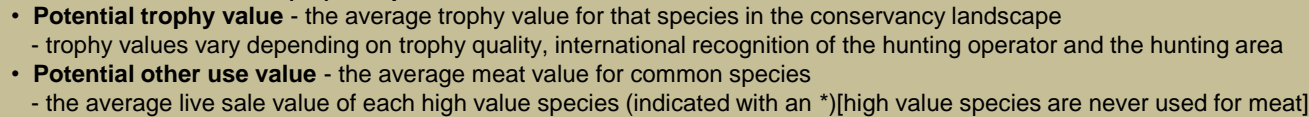


maximising wildlife returns by minimising threats...



# monitoring numbers and trends for a healthy conservancy...

## Current wildlife numbers and status

Species	Animals Seen 2014	Estimated population range	Wildlife Status		
			Count Trend	National Guideline	Desired Number
Elephant					
Gemsbok					
Giraffe					
Jackal	1				
Klipspringer					
Kudu					
Mtn. zebra					
Ostrich	1				
Springbok					
Steenbok	3				

**Wildlife Status**

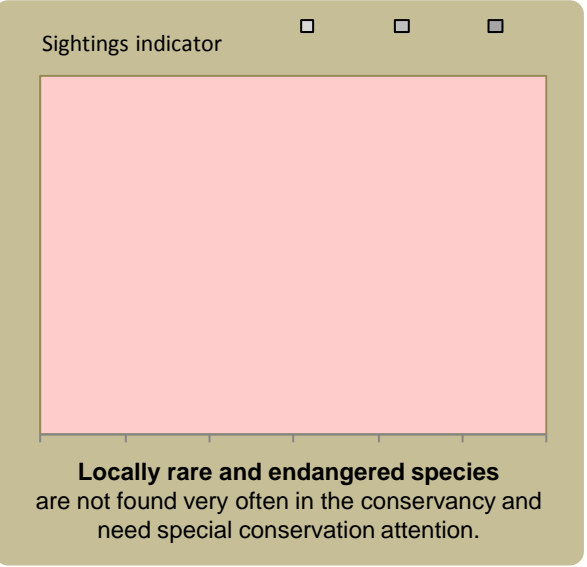
**Count trend** – gives the species status in the conservancy based on game count trend data.

**National guideline** – gives the species status in the conservancy using national guidelines for the conservancy; for example, lions may cause local problems, but are of high value and are rare at landscape level.

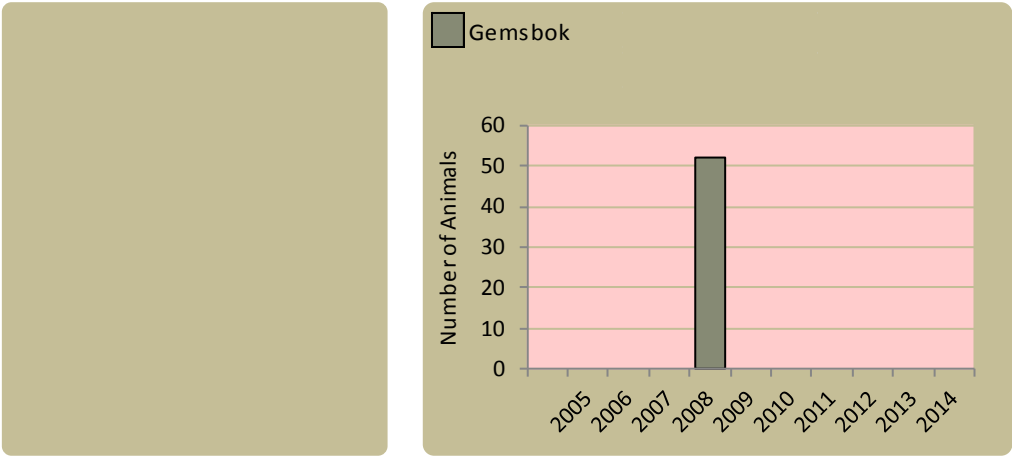
**Desired number** – gives the species status in the conservancy based on what the conservancy would like to have.

**dark green** (abundant) – there should be less;  
**light green** (common) – the desired number is reached;  
**yellow** (uncommon) – there should be more;  
**light orange** (rare) – there should be more than double;  
**dark orange** (very rare) – there should be more than triple;  
**red** (extinct) – the species needs to be reintroduced.

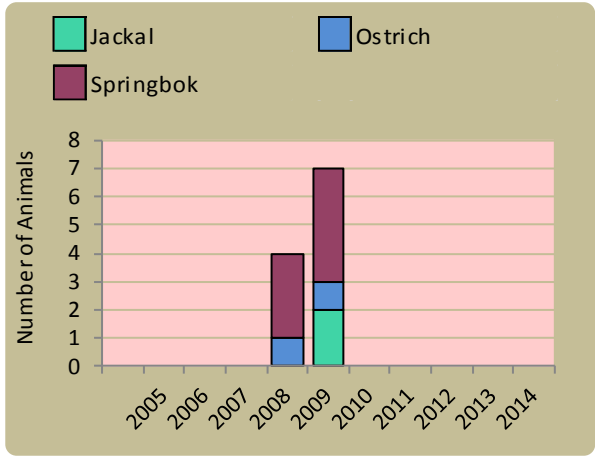
## Locally rare species



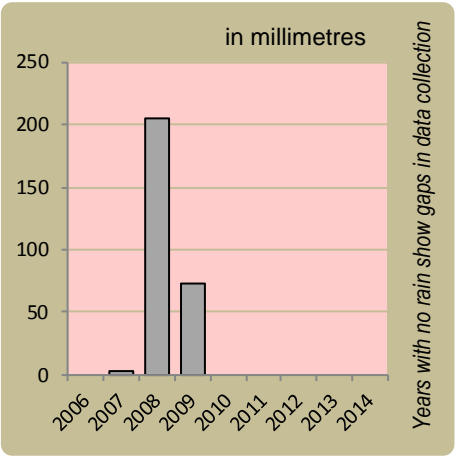
## Wildlife introductions



## Wildlife mortalities

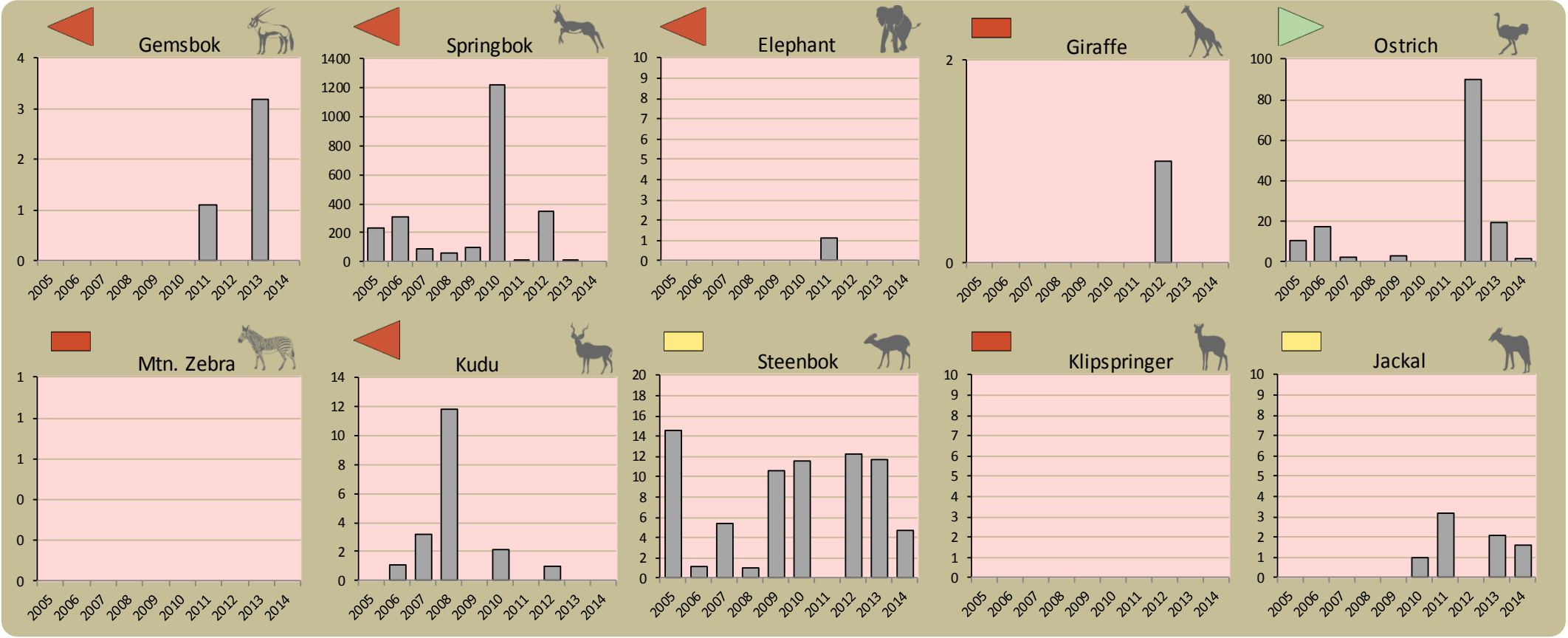


## Annual rainfall



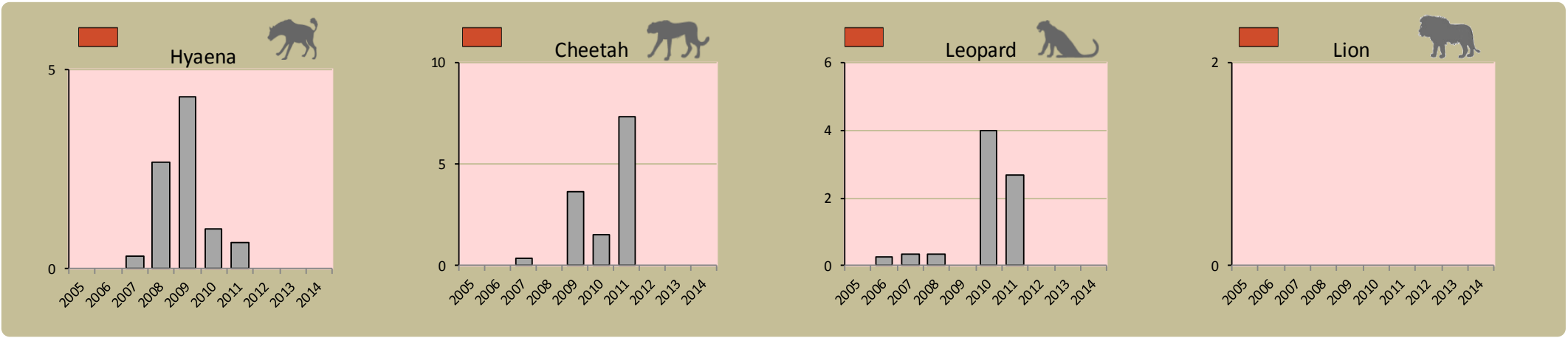
## Annual game count

charts show the number of animals seen each year per 100 km driven during the game count status barometers reflect the general count trend over the last 5 years



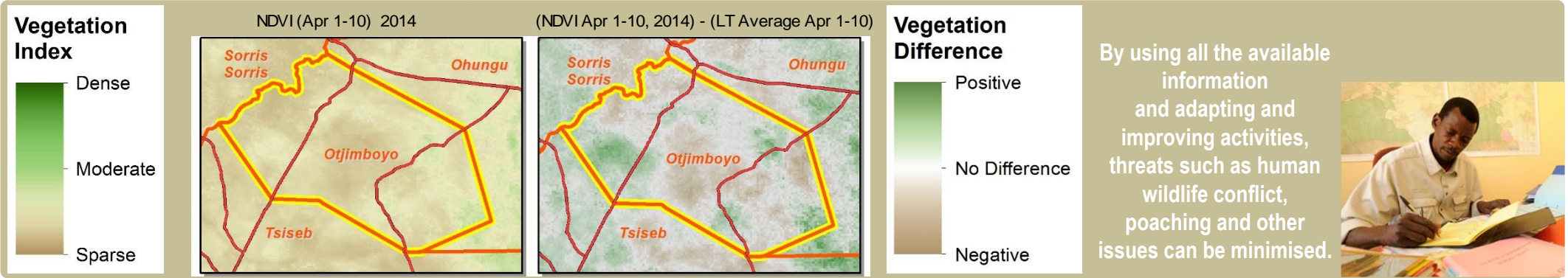
## Predator monitoring

charts show the average number of animals seen per Event Book each year status barometers reflect the general sightings trend over the last 5 years



## Vegetation monitoring

Green vegetation index (NDVI). Maps show vegetation cover in the first 10 days of April of the current year and the difference between the current year and the 10 year average (2001-2010)





## Enabling wise conservancy governance...

### Conservancy statistics

Date Registered:	March 2003
Members:	400
Size (square kilometres):	448

### Conservancy Governance

Number of management committee members:	11
Date of last AGM:	11 February 2015
Attendance at AGM:	Men: ; Women:
Date of next AGM:	30 November 2014
Other important issues	
Financial report approved?	✗
Budget approved?	✗
Work plan approved?	✗

### Constitutional adherence

Approved constitution	✓
AGM held	✓
Management and utilisation plan	✗
Financial annual report	✗
Benefit distribution plan	✗
Audit of the constitution	✗



### Employment

Conservancy staff: Male	0
Female	0
Community game guards:	3
Community resource monitors:	0
Lodge staff: Male	0
Female	0

### Benefits

Meat Distribution	
-------------------	--

### Conservancy Self Evaluation

How well does the conservancy consider it has performed in the past year?

Effectiveness of implementation	Poor	Fair	Good	Explanation of effectiveness rating
Game Utilisation and Management Plan				
Zonation Plan				
Natural Resource Plan				
Human Wildlife Conflict Plan				
Tourism Plan				
Sustainable Financial Plan				
Benefit Distribution Plan				
Staff Plan				
Assets Plan				
HIV/AIDS Plan				
Communication Plan				