

monitoring numbers and trends for a healthy conservancy...

Current wildlife numbers and status

Species	Animals Seen	Estimate	Wildlife Status		
			Count Trend	National Guideline	Desired Number
B. Zebra					
Duiker	4	93			
Elephant	20	20			
Giraffe	4	4			
Impala	4	4			
Kudu		3			
Roan					
Sable					
Steenbok					
Warthog	2	2			

Wildlife Status

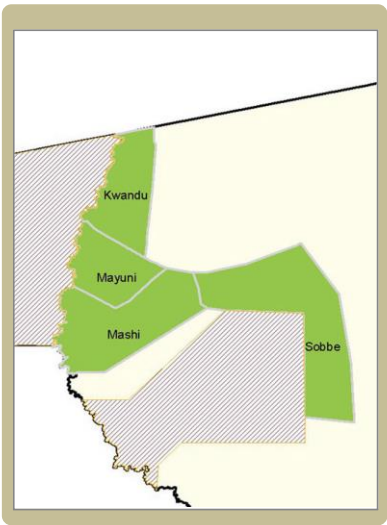
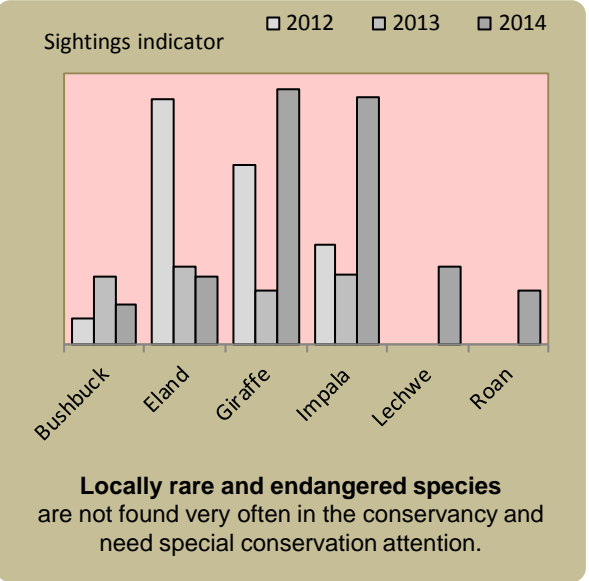
Count trend – gives the species status in the conservancy based on game count trend data.

National guideline – gives the species status in the conservancy using national guidelines for the conservancy; for example, lions may cause local problems, but are of high value and are rare at landscape level.

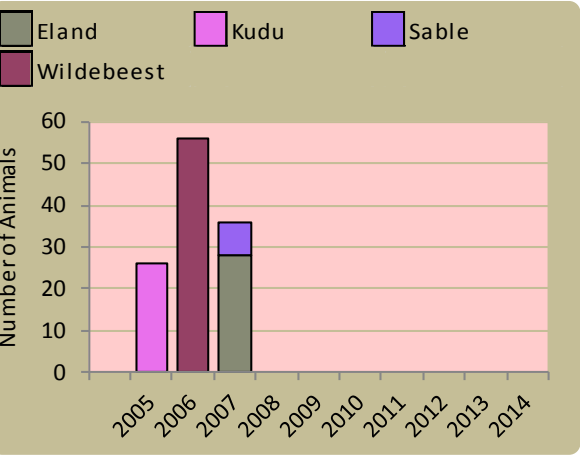
Desired number – gives the species status in the conservancy based on what the conservancy would like to have.

dark green (abundant) – there should be less;
light green (common) – the desired number is reached;
yellow (uncommon) – there should be more;
light orange (rare) – there should be more than double;
dark orange (very rare) – there should be more than triple;
red (extinct) – the species needs to be reintroduced.

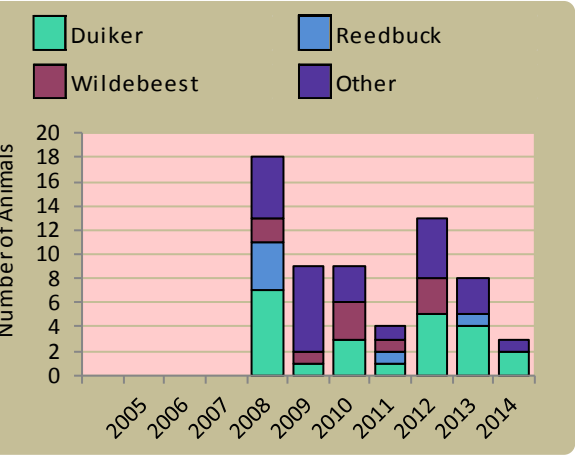
Locally rare species



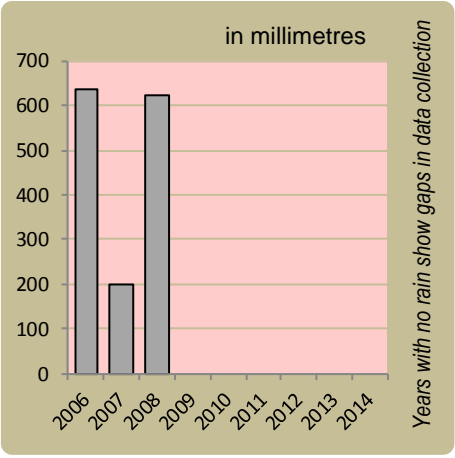
Wildlife introductions



Wildlife mortalities

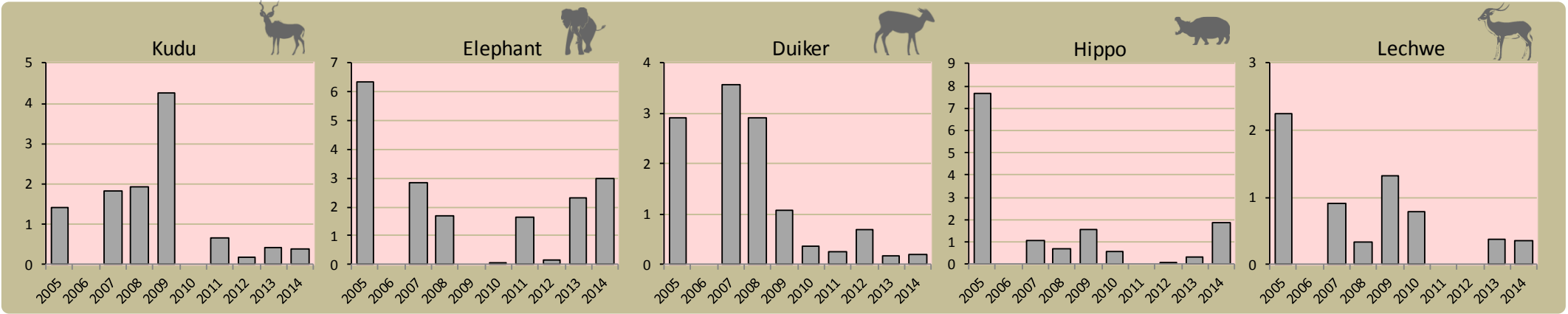


Annual rainfall



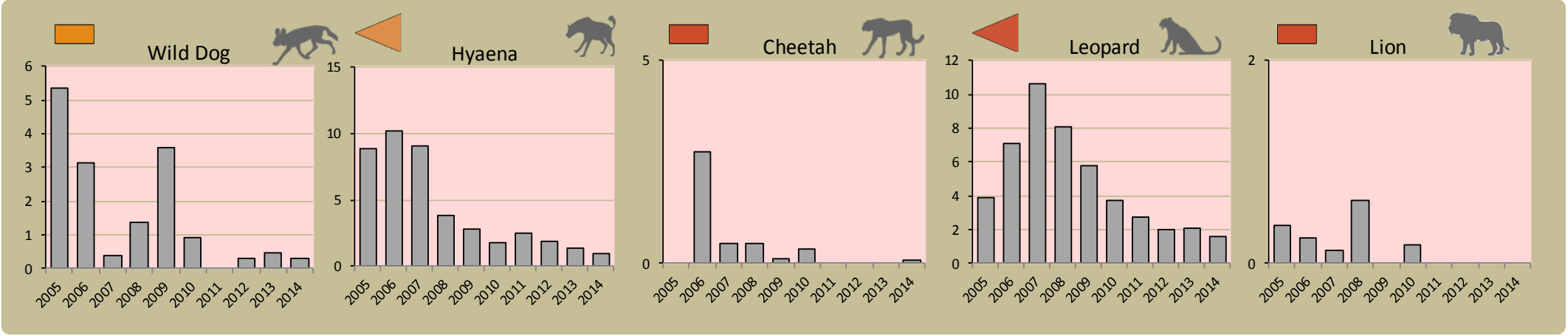
Fixed route patrols

charts show the number of sightings of each species per fixed route foot patrol each year

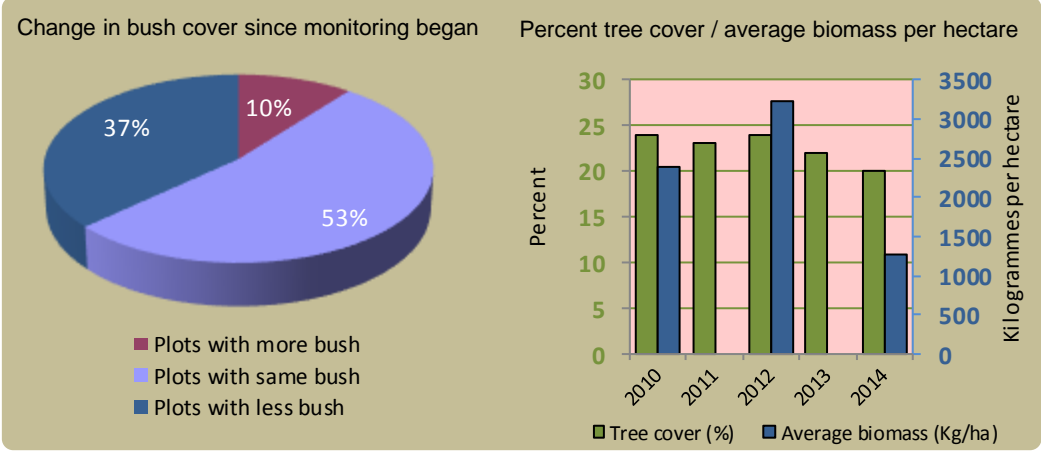


Predator monitoring

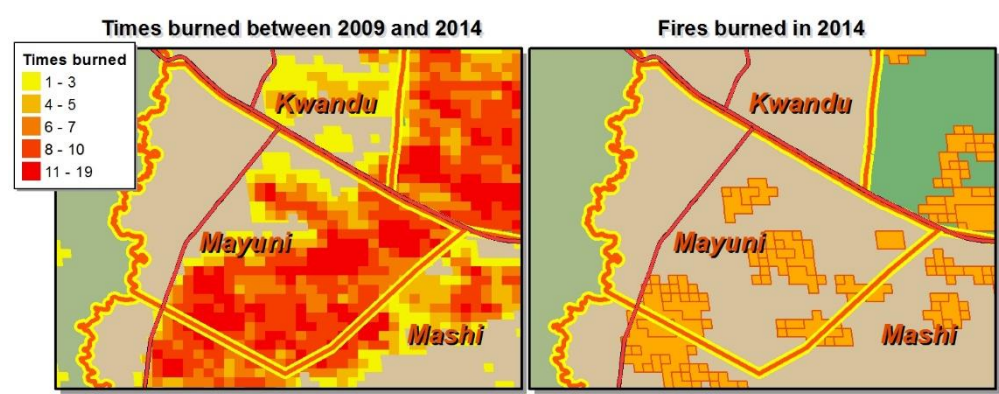
charts show the average number of animals seen per Event Book each year
status barometers reflect the general sightings trend over the last 5 years



Vegetation monitoring



Fire monitoring



Wildlife provides a wide range of benefits. Some wildlife can cause conflicts, but all wildlife is of value to tourism, trophy hunting and a healthy environment.



By using all the available information and adapting and improving activities, threats such as human wildlife conflict, poaching and other issues can be minimised.



Enabling wise conservancy governance...

Conservancy statistics

Date Registered:	December 1999
Members:	3249
Size (square kilometres):	151

Conservancy Governance

Number of management committee members:	14
Date of last AGM:	29 November 2014
Attendance at AGM:	Men: 106; Women: 103
Date of next AGM:	29 November 2015
Other important issues	
Financial report approved?	✓
Budget approved?	✓
Work plan approved?	✓

Constitutional adherence

Approved constitution	✓
AGM held	✓
Management and utilisation plan	✓
Financial annual report	✓
Benefit distribution plan	✗
Audit of the constitution	✓



Employment

Conservancy staff: Male	12
Female	3
Community game guards:	9
Community resource monitors:	0
Lodge staff: Male	39
Female	27

Benefits

Training On Hwc	Schools
Transport	
Employment	
Meat Distribution	
Distribution	
Traditional Authority	
Funerals	
Church	

Conservancy Self Evaluation

How well does the conservancy consider it has performed in the past year?

Effectiveness of implementation	Poor	Fair	Good	Explanation of effectiveness rating
Game Utilisation and Management Plan				Implemented most activities within the plan. Implemented most activities within the plan.
Zonation Plan				Implemented most activities with in plan
Natural Resource Plan				Implemented most activities within plan
Human Wildlife Conflict Plan				There are delays in the payments of claims.
Tourism Plan				Implemented most of the activities within the plan successfully.
Sustainable Financial Plan				Income streaming in slowly.
Benefit Distribution Plan				Management committee not following up on benefits and not giving advice how benefits should be distributed in order to be more tangible.
Staff Plan				Stadd managed according to policy and held accountable.
Assets Plan				Regular check of assets
HIV/AIDS Plan				The conservancy could do more then what is currently being done.
Communication Plan				Effectively communicating with members.