

- **Potential trophy value** - the average trophy value for that species in the conservancy landscape
  - trophy values vary depending on trophy quality, international recognition of the hunting operator and the hunting area
- **Potential other use value** - the average meat value for common species
  - the average live sale value of each high value species (indicated with an \*) [high value species are never used for meat]

# monitoring numbers and trends for a healthy conservancy...

## Current wildlife numbers and status

Species	Animals Seen	Estimate	Wildlife Status		
			Count Trend	National Guideline	Desired Number
B. Zebra					
Duiker	4	280			
Elephant	10	10			
Giraffe					
Impala		35			
Kudu	12	18			
Roan					
Sable					
Steenbok					
Warthog		2			

### Wildlife Status

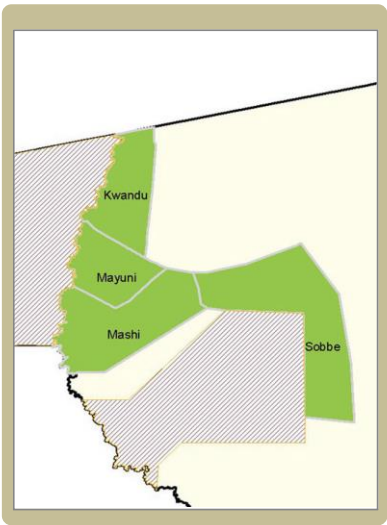
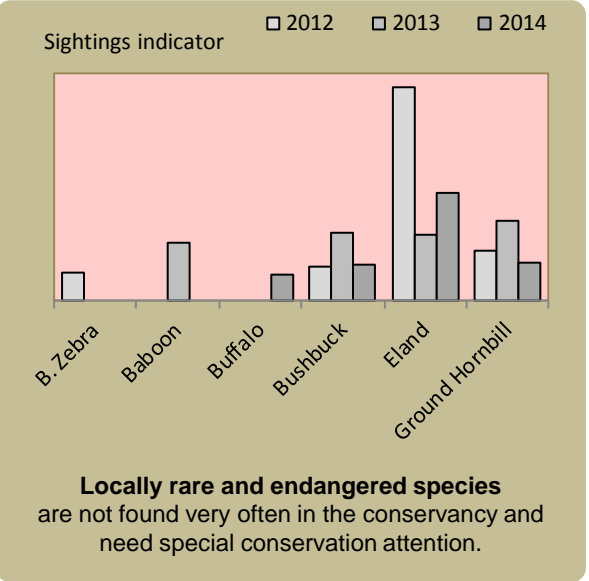
**Count trend** – gives the species status in the conservancy based on game count trend data.

**National guideline** – gives the species status in the conservancy using national guidelines for the conservancy; for example, lions may cause local problems, but are of high value and are rare at landscape level.

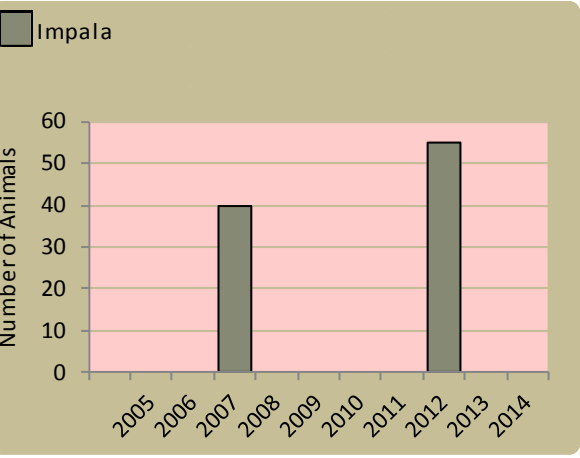
**Desired number** – gives the species status in the conservancy based on what the conservancy would like to have.

**dark green** (abundant) – there should be less;  
**light green** (common) – the desired number is reached;  
**yellow** (uncommon) – there should be more;  
**light orange** (rare) – there should be more than double;  
**dark orange** (very rare) – there should be more than triple;  
**red** (extinct) – the species needs to be reintroduced.

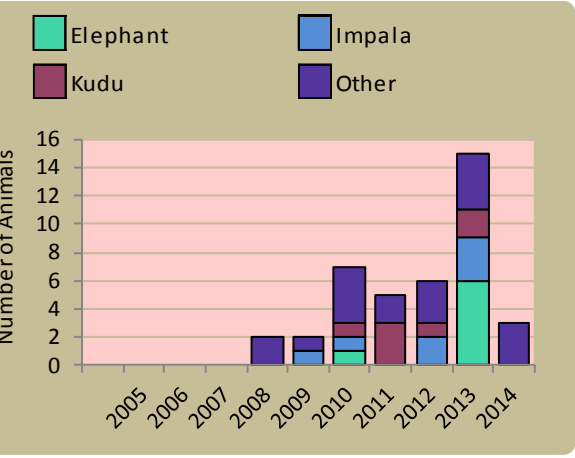
## Locally rare species



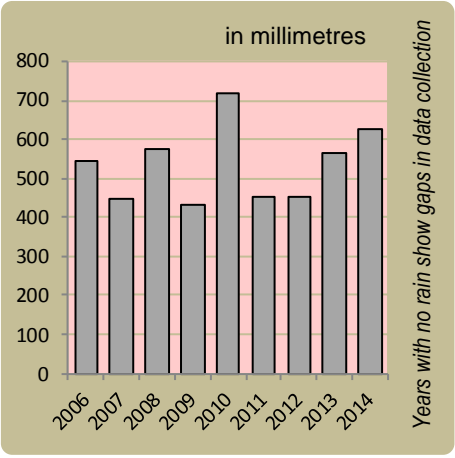
## Wildlife introductions



## Wildlife mortalities

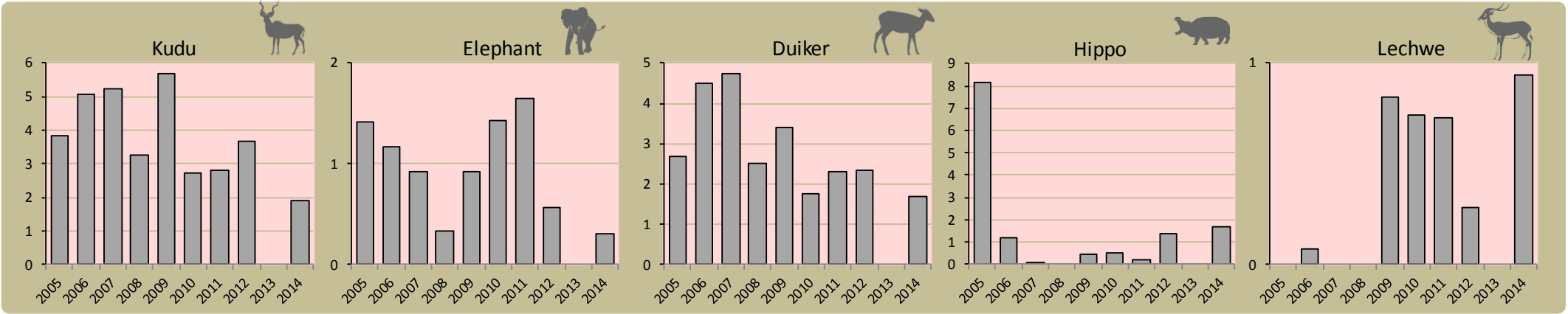


## Annual rainfall



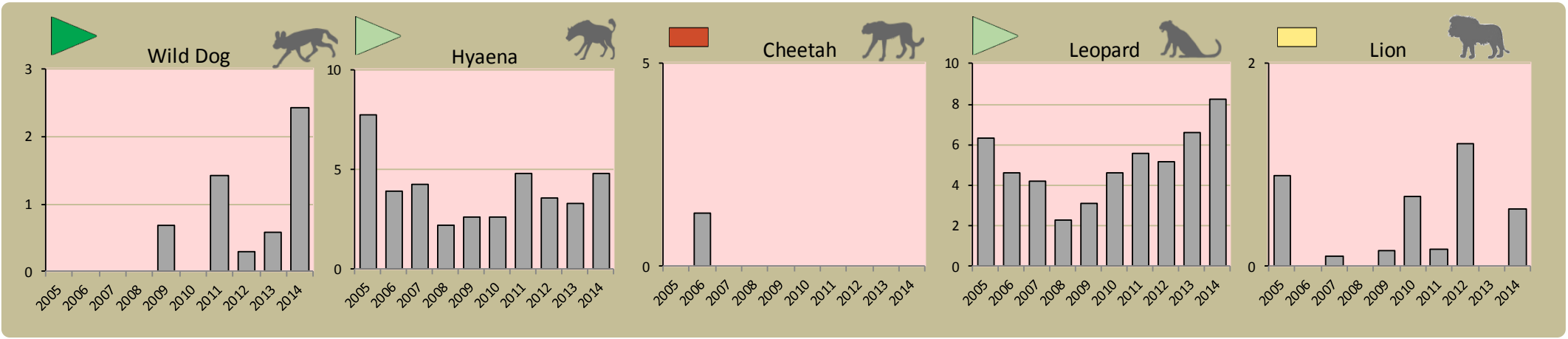
## Fixed route patrols

charts show the number of sightings of each species per fixed route foot patrol each year

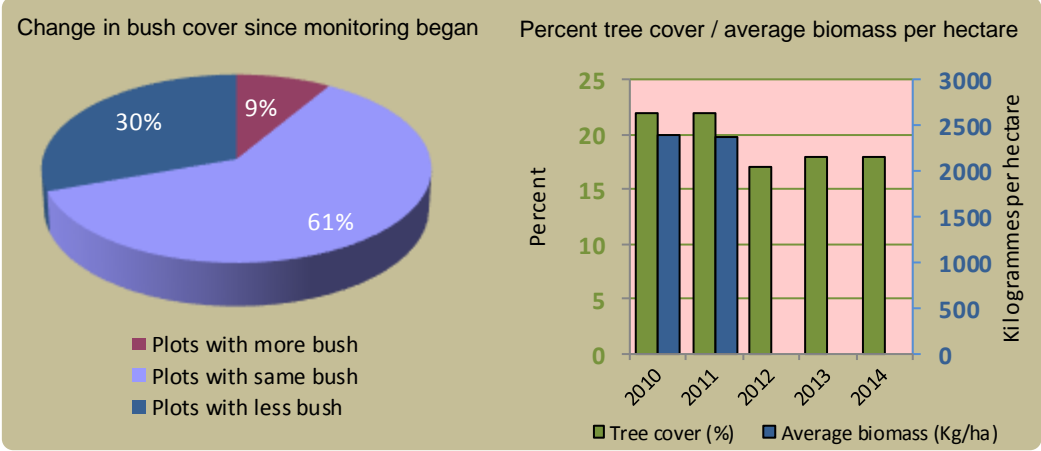


## Predator monitoring

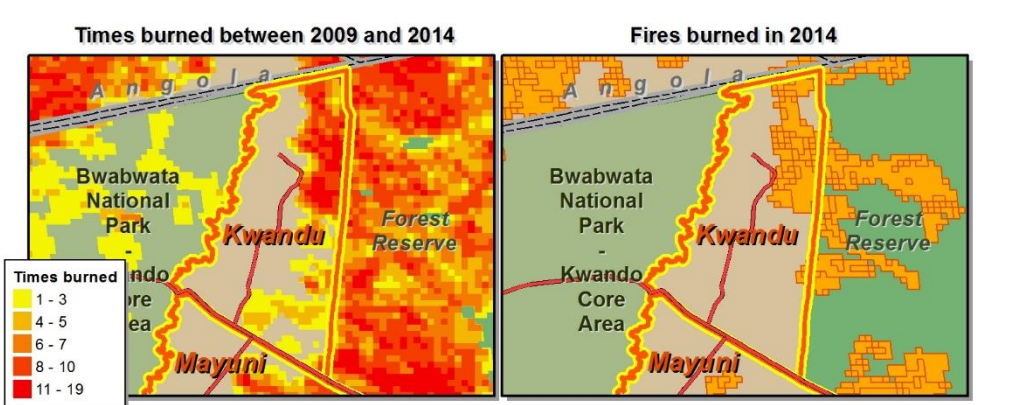
charts show the average number of animals seen per Event Book each year  
status barometers reflect the general sightings trend over the last 5 years



## Vegetation monitoring



## Fire monitoring



Wildlife provides a wide range of benefits. Some wildlife can cause conflicts, but all wildlife is of value to tourism, trophy hunting and a healthy environment.



By using all the available information and adapting and improving activities, threats such as human wildlife conflict, poaching and other issues can be minimised.





## Enabling wise conservancy governance...

### Conservancy statistics

Date Registered:	December 1999
Members:	4300
Size (square kilometres):	190

### Conservancy Governance

Number of management committee members:	13
Date of last AGM:	02 December 2014
Attendance at AGM:	Men: 70; Women: 66
Date of next AGM:	02 December 2015
Other important issues	
Financial report approved?	✓
Budget approved?	✓
Work plan approved?	✓

### Constitutional adherence

Approved constitution	✓
AGM held	✓
Management and utilisation plan	✓
Financial annual report	✓
Benefit distribution plan	✓
Audit of the constitution	✓



### Employment

Conservancy staff: Male	17
Female	7
Community game guards:	14
Community resource monitors:	0
Lodge staff: Male	0
Female	0

### Benefits

Meat	
Training To Farmers On Hwc	
Cash Distribution	
Wires To Farmers	

### Conservancy Self Evaluation

How well does the conservancy consider it has performed in the past year?

Effectiveness of implementation	Poor	Fair	Good	Explanation of effectiveness rating
Game Utilisation and Management Plan				Activities implemented well, no complaints from the community.
Zonation Plan				Challenging due to biophysical constraints. Communities that were moved to higher ground do not have access to drinking water.
Natural Resource Plan				Most planned activities were implemented with positive results.
Human Wildlife Conflict Plan				Most planned activities were implemented with positive results.
Tourism Plan				Challenge in raising funds to supplement money received from KAZA and MET.
Sustainable Financial Plan				Achieved all the goals within the plan.
Benefit Distribution Plan				Not enough income to adhere to plan.
Staff Plan				Have not fully adhered to plan.
Assets Plan				Plan was revised in 2012, only started implementing it in 2014
HIV/AIDS Plan				Have not had asset register over some time as it went with MAC and Associates for auditing. Could not update. Need to improve asset plan.
Communication Plan				No supply of condoms, Need to increase awareness, need to improve link between support organisations that deal with HIV/AIDS.
				Need to strenthen communication with members.