

## Conservancy status summary

monitoring numbers and trends for a healthy conservancy...

Current wildlife numbers and status

Species	Animals Seen 2014	Estimated population range	Wildlife Status		
			Count Trend	National Guideline	Desired Number
Elephant	0				
Gemsbok	57	680 - 1080			
Giraffe	5	15 - 20			
Jackal	2				
Klipspringer	0				
Kudu	1	15 - 30			
Mtn. zebra	131	880 - 1120			
Ostrich	24	240 - 460			
Springbok	551	1700 - 3900			
Steenbok	0				

Wildlife Status

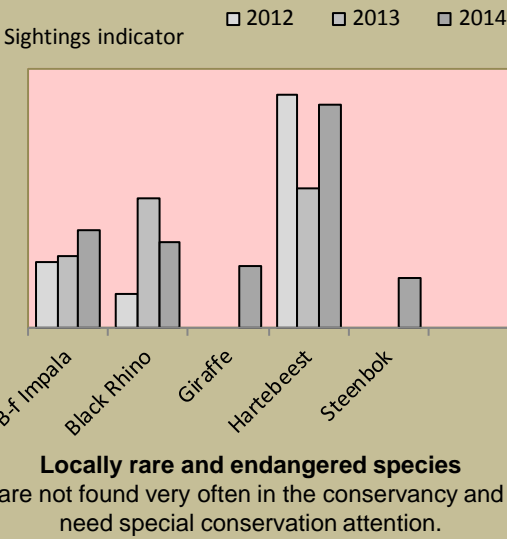
**Count trend** – gives the species status in the conservancy based on game count trend data.

**National guideline** – gives the species status in the conservancy using national guidelines for the conservancy; for example, lions may cause local problems, but are of high value and are rare at landscape level.

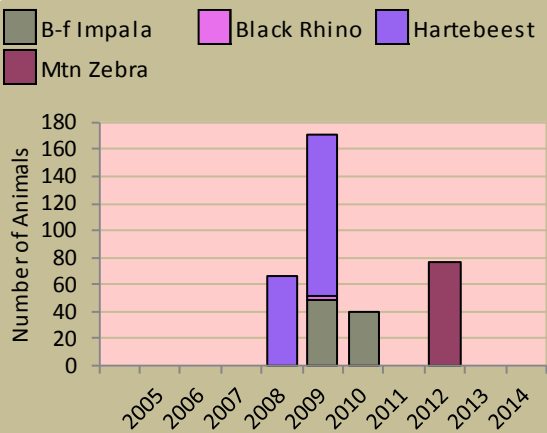
**Desired number** – gives the species status in the conservancy based on what the conservancy would like to have.

**dark green** (abundant) – there should be less;  
**light green** (common) – the desired number is reached;  
**yellow** (uncommon) – there should be more;  
**light orange** (rare) – there should be more than double;  
**dark orange** (very rare) – there should be more than triple;  
**red** (extinct) – the species needs to be reintroduced.

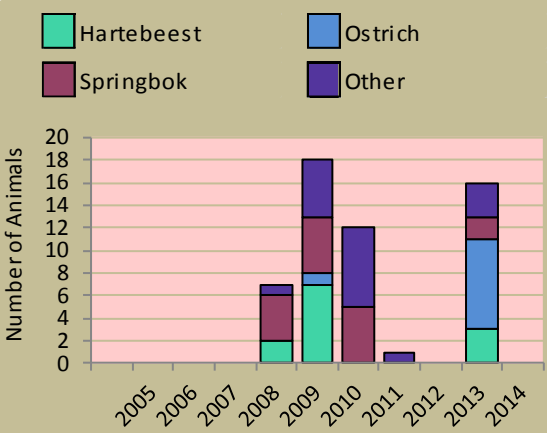
Locally rare species



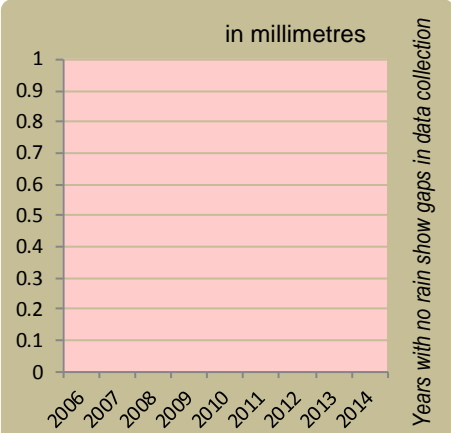
Wildlife introductions



Wildlife mortalities

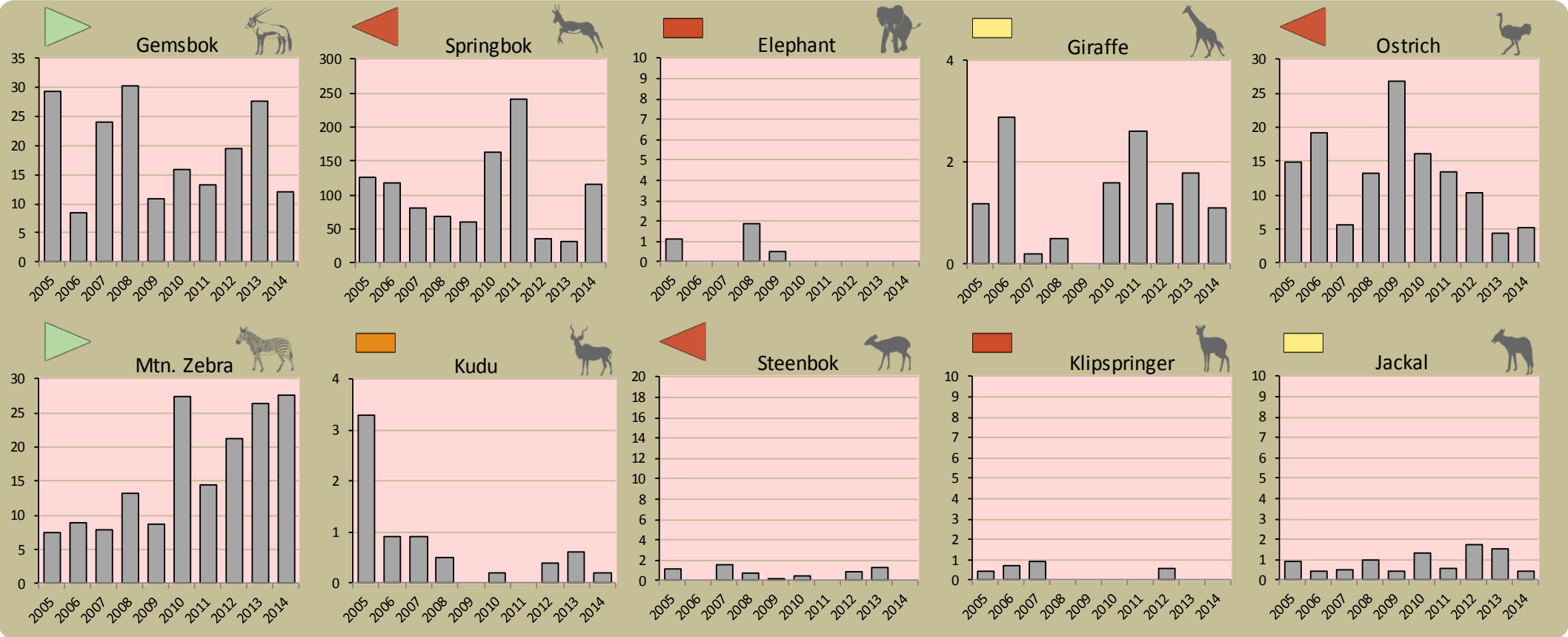


Annual rainfall



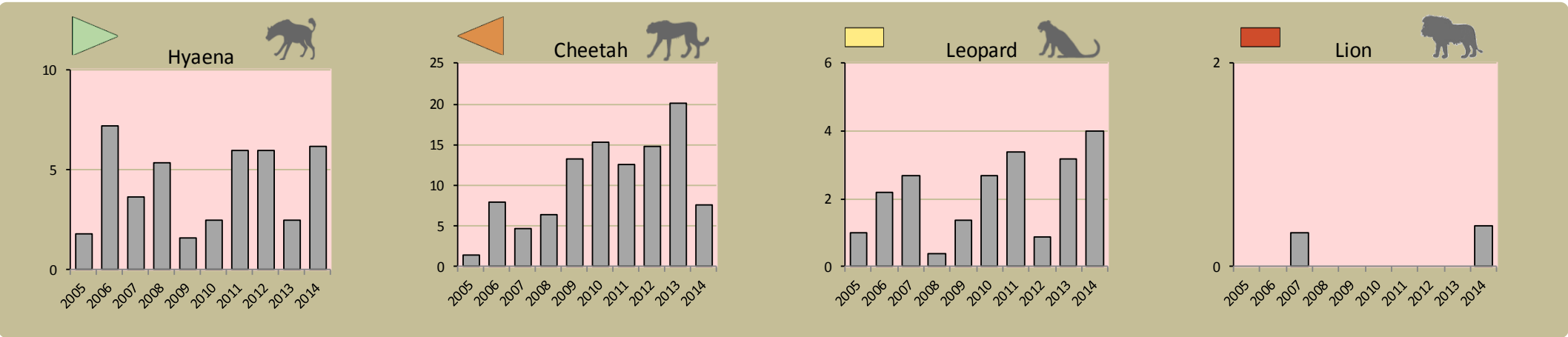
Annual game count

charts show the number of animals seen each year per 100 km driven during the game count  
status barometers reflect the general count trend over the last 5 years



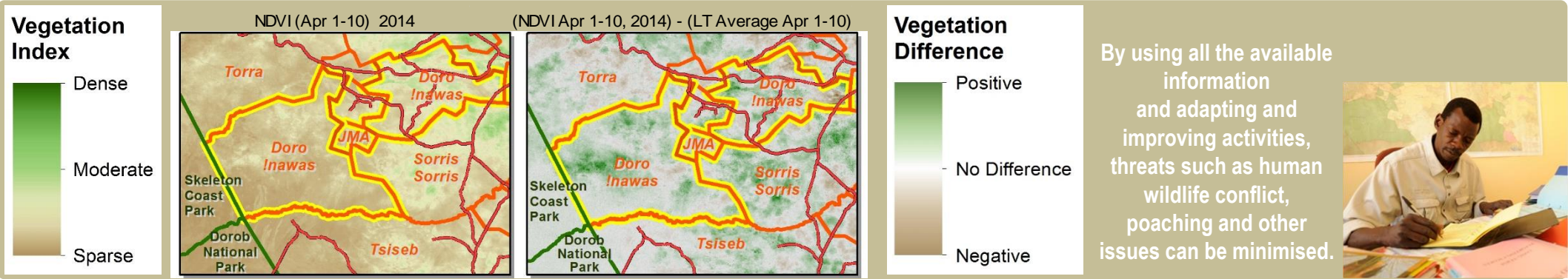
Predator monitoring

charts show the average number of animals seen per Event Book each year  
status barometers reflect the general sightings trend over the last 5 years



Vegetation monitoring

Green vegetation index (NDVI). Maps show vegetation cover in the first 10 days of April of the current year and the difference between the current year and the 10 year average (2001-2010)





## Enabling wise conservancy governance...

### Conservancy statistics

Date Registered:	December 1999
Members:	489
Size (square kilometres):	3978

### Conservancy Governance

Number of management committee members:	17
Date of last AGM:	10 March 2015
Attendance at AGM:	Men: 34; Women: 32
Date of next AGM:	22 March 2015
Other important issues	
Financial report approved?	✓
Budget approved?	✗
Work plan approved?	✓

### Constitutional adherence

Approved constitution	✓
AGM held	✓
Management and utilisation plan	✓
Financial annual report	✓
Benefit distribution plan	✓
Audit of the constitution	✗



### Employment

Conservancy staff: Male	35
Female	333
Community game guards:	22
Community resource monitors:	27
Lodge staff: Male	18
Female	29

### Benefits

--	--

### Conservancy Self Evaluation

How well does the conservancy consider it has performed in the past year?

Effectiveness of implementation	Poor	Fair	Good	Explanation of effectiveness rating
Game Utilisation and Management Plan				
Zonation Plan				Conservancy does not pay much C31 on zonation plan.
Natural Resource Plan				
Human Wildlife Conflict Plan				HWC review panel will be re-elected, so that the panel reviewed.
Tourism Plan				Campsite must be upgraded and staff must be trained and agreement with JV must be done.
Sustainable Financial Plan				Constitution implemented
Benefit Distribution Plan				Plan is in draft form.
Staff Plan				Managers position still vacant
Assets Plan				Not strictly monitored.
HIV/AIDS Plan				
Communication Plan				Announce meeting on the radio if meeting is planned.