

ENVIRONMENTAL IMPACT ASSESSMENT FOR THE PROPOSED ACTIVITY IN HENTIES BAY

Subdivision of Erf 1924, Hentiesbaai Extension 8 into Portion A, B, C and Remainder, rezoning and servitude registration

List of triggered activities identified in the EIA Regulations which apply to the proposed project

*Activity 10.1 (b) Infrastructure
The construction of public roads*

*Activity 10.2 (a) Infrastructure
The route determination of roads and design of associated physical infrastructure where - it is a public road;*

BACKGROUND INFORMATION DOCUMENT

1 PURPOSE OF THIS DOCUMENT

The purpose of this Background Information Document (BID) is to brief Interested & Affected Parties (I&AP's) about the Environmental Impact Assessment (EIA) being undertaken for the proposed development activities in Henties Bay.

The BID also provides an opportunity for I&APs to register for the EIA process and to submit any initial comments or issues regarding the proposed project.

2 BACKGROUND INFORMATION

The Municipality of Henties Bay, hereinafter referred to as the proponent, intends to undertake the following activities:

- (a) Subdivision of Erf 1924, Hentiesbaai Extension 8 into Erven A, B, C and Remainder;**
- (b) Rezoning of Erf B/1924, Hentiesbaai Extension 8 from "Cemetery" to "Parking";**
- (c) Rezoning of Erf C/1924, Hentiesbaai Extension 8 from "Cemetery" to "Public Open Space";**
- (d) Reservation of Erf RE/1924, Hentiesbaai Extension 8 as "Street";**
- (e) Registration of a 15m wide Waterline Servitude against Erven C/1924 and Re/1924, Hentiesbaai Extension 8 in favour of Namwater;**
- (f) Inclusion of the rezonings in the next zoning scheme to be prepared for Henties Bay.**

In terms of the Environmental Management Act (No. 7 of 2007) and Environmental Impact Assessment Regulations (Government Notice No. 30 of 2012), the listed activities indicated to the left were triggered by the proposed project.

The proponent commissioned this EIA and appointed Stubenrauch Planning Consultants (SPC) to undertake the necessary activities to enable an application for an Environmental Clearance Certificate (ECC) with the Environmental Commissioner as prescribed by the Environmental Management Act (No. 7 of 2007) and Environmental Impact Assessment Regulations (Government Notice No. 30 of 2012). In line with Regulation 21(2) of the mentioned EIA Regulations, this BID is distributed to potential I&APs as part of the public consultation process for this EIA.

This Environmental Assessment will therefore be undertaken to determine the potential environmental and socio-economic impacts associated with the proposed development activity.

3 DEVELOPMENT DESCRIPTION

3.1 Locality

Erf 1924, Hentiesbaai Extension 8 is located on the north-eastern part of the Henties Bay Town, directly south west of the C34 Main Road to Terrace Bay and it measures approximately 37 489m² in extent. The locality of the proposed site can be observed in **Figure 1** below.

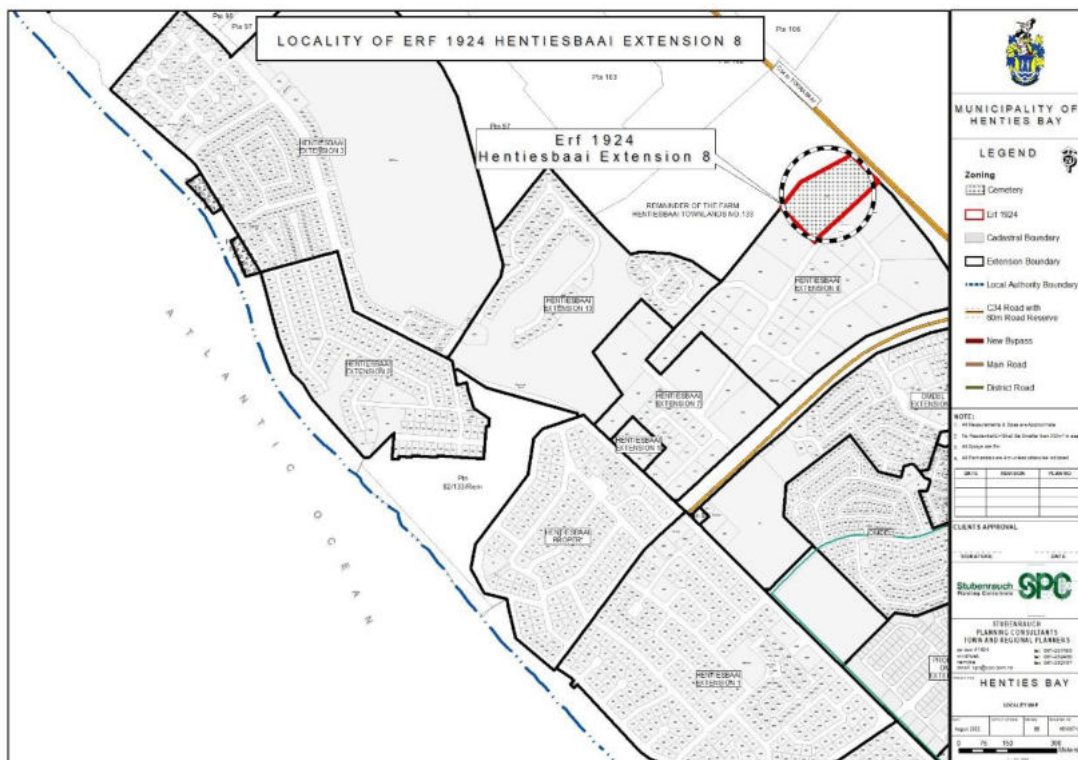


FIGURE 1: LOCALITY OF ERF 1924, HENTIESBAAI EXTENSION 8

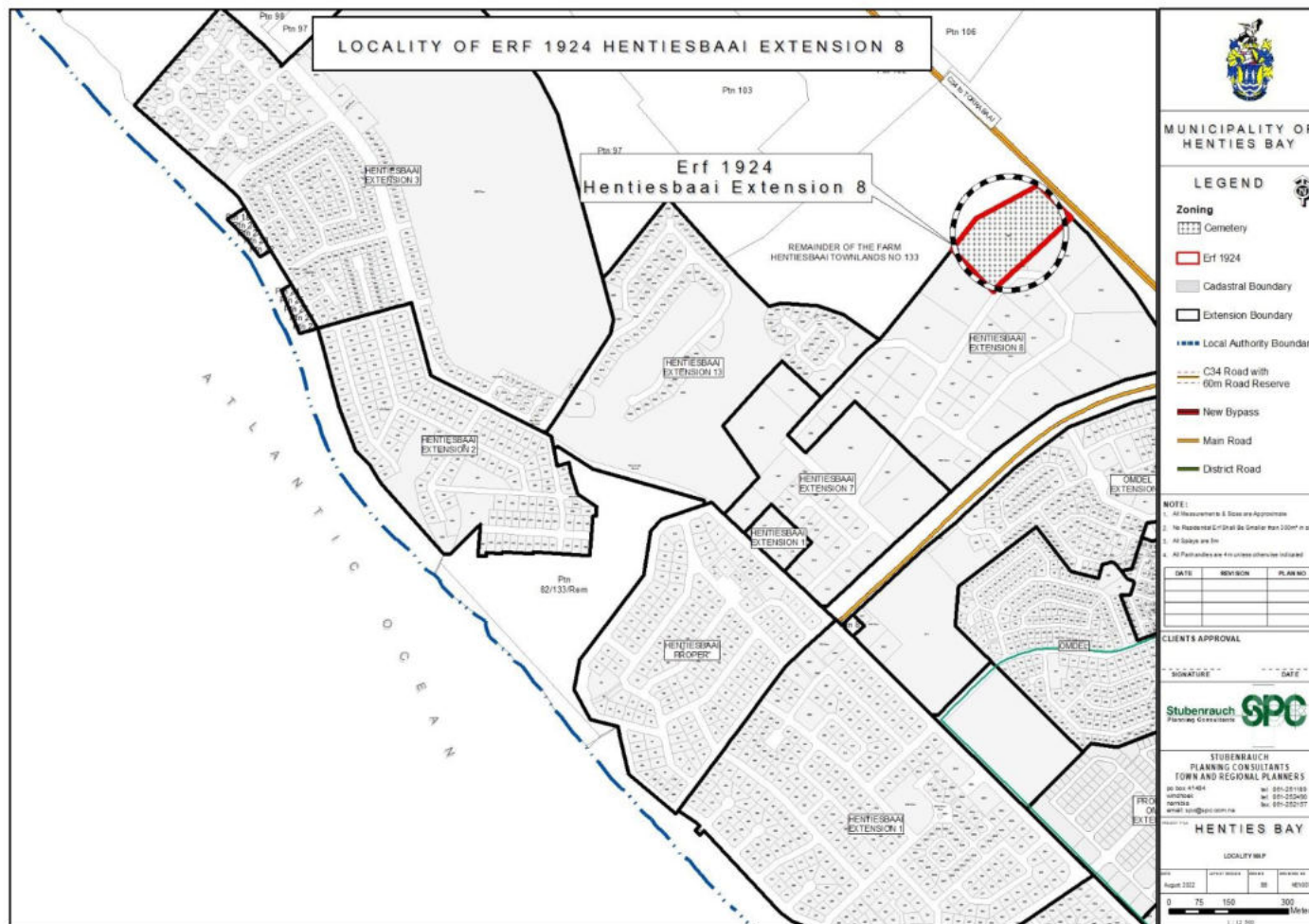


FIGURE 1: LOCALITY OF MAP OF ERF 1924, HENTIESBAAI EXTENSION 8

3.2 Proposed Development

The proponent (Henties Bay Town Council) intends to subdivide Erf 1924, Hentiesbaai Extension 8 into Erven A, B, C and Remainder for the Namibia Water Corporation (Pty) Ltd (NamWater) to be able to re-place the existing water pipeline which currently runs across the Hentiesbaai Cemetery on Erf 1924, Hentiesbaai Extension 8 as it now lacks capacity and has reached the end of its life span. NamWater further intends to re-route the water pipeline and cancel the 20m wide Waterline Servitude registered against Erf 1924, Hentiesbaai Extension 8 in favour of NamWater as it currently limits the utilisation of land to full capacity. The water pipeline is to be redirected to run across the erf to be created south east of Erf 1924, Hentiesbaai Extension 8, to allow for the maximum utilization of land.

In addition, the Municipality of Henties Bay has also resolved to utilise a portion of Erf 1924, Hentiesbaai Extension 8 which currently accommodates the NamWater pipeline for parking purposes once the pipeline has been successfully rerouted as intended by NamWater. The Municipality further intends to have the existing internal road which currently provides access to the cemetery formally extended and connected to the C34 Main Road to Terrace Bay.

The following statutory steps must be undertaken for the intended development:

- (a) Subdivision of Erf 1924, Hentiesbaai Extension 8 into Erven A, B, C and Remainder;**
- (b) Rezoning of Erf B/1924, Hentiesbaai Extension 8 from “Cemetery” to “Parking”;**
- (c) Rezoning of Erf C/1924, Hentiesbaai Extension 8 from “Cemetery” to “Public Open Space”;**
- (d) Reservation of Erf RE/1924, Hentiesbaai Extension 8 as “Street”;**
- (e) Registration of a 15m wide Waterline Servitude against Erven C/1924 and Re/1924, Hentiesbaai Extension 8 in favour of Namwater;**
- (f) Inclusion of the rezonings in the next zoning scheme to be prepared for Henties Bay.**

3.2.1 The subdivision

Erf 1924, Hentiesbaai Extension 8 which is currently zoned “Cemetery” and is being utilised as a “Cemetery” is to be subdivided into Erf A, B, C and the Remainder as indicated in Table 1 below. The proposed Erf A/1924, Hentiesbaai Extension 8 will retain the current land use reservation for “Cemetery” in accordance with the Henties Bay Zoning Scheme.

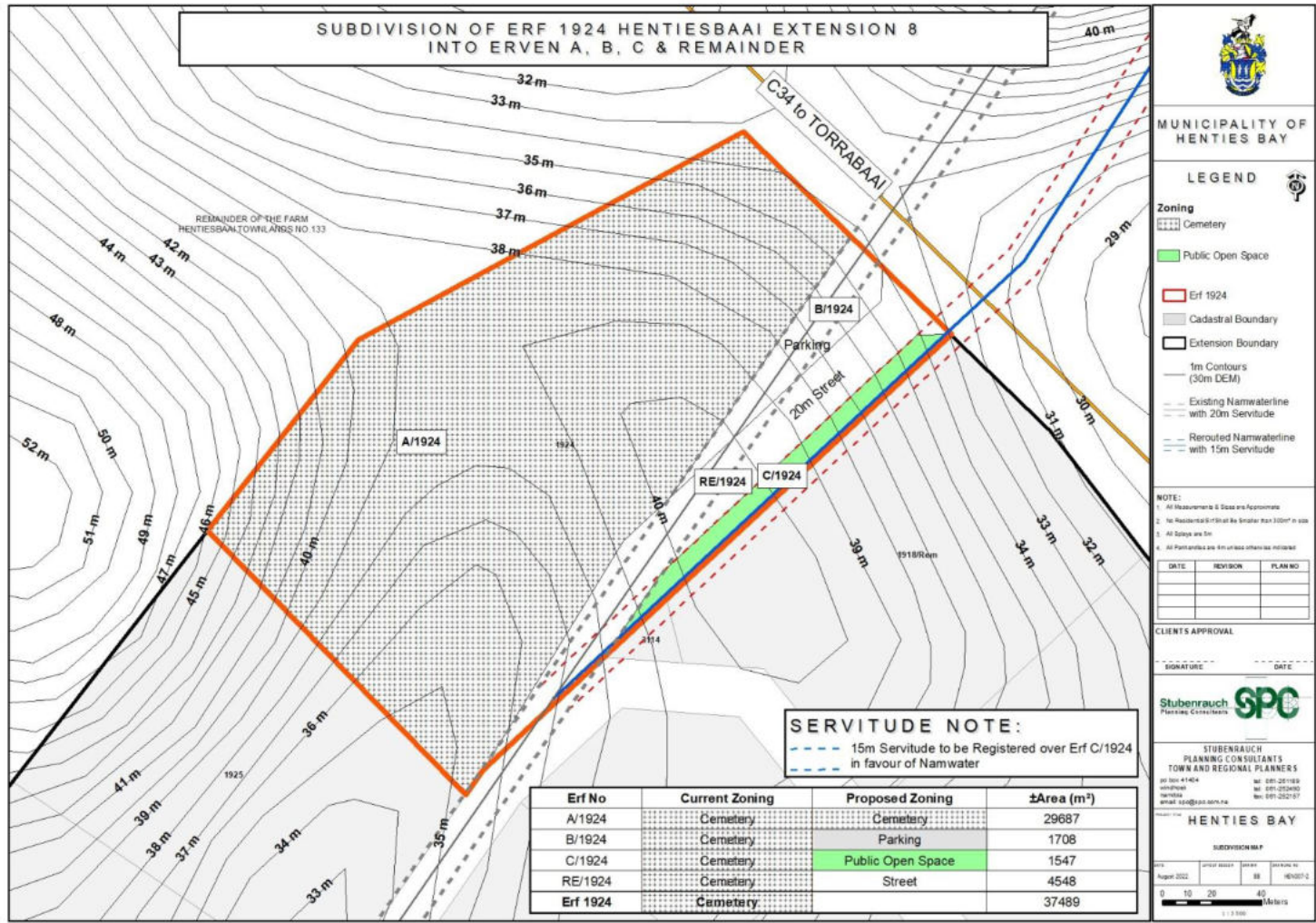


FIGURE 2: SUBDIVISION OF ERF 1924, HENTIESBAAI EXTENSION 8 INTO ERVEN A, B, C AND REMAINDER

3.2.2 Zoning and rezoning

According to Clause 4 of the Henties Bay Zoning Scheme, Erf 1924, Hentiesbaai Extension 8 is reserved for “Cemetery” and it is currently being used as a burial ground by the residents of Henties Bay.

The proposed Erf B/1924, Hentiesbaai Extension 8 is to be rezoned from “Cemetery” to “Parking” to serve as a supporting land use to the existing “Cemetery” by providing secured space for motor vehicles whenever there are gatherings at the cemetery. While the proposed Erf C/1924, Hentiesbaai Extension 8 is to be rezoned from “Cemetery” to “Public Open Space” to enable the erf to accommodate the NamWater Pipeline which is to be re-routed from the cemetery as proposed.

The land use zonings to be allocated to the proposed subdivision of Erf 1924, Hentiesbaai Extension 8 which is to be created is reflected in **Table 1** below.

TABLE 1: LAND USE ZONING

Erf No	Current Zoning	±Area (m ²)
A/1924	Cemetery	29687
B/1924	Cemetery	1708
C/1924	Cemetery	1547
RE/1924	Cemetery	4548
Erf 1924	Cemetery	37489

3.2.3 Ownership and conditions

Ownership of the Erf 1924, Hentiesbaai Extension 8 vest with the Henties Bay Municipality as per the Certificate of Registered Title No. T745/1995.

There is a 20m Waterline Servitude registered against Erf 1924, Hentiesbaai Extension 8 in favor of Namwater as it accommodates the bulk water pipeline.

3.3 Infrastructure and Services

(a) Water, Sewer and Electricity

Erf 1924, Hentiesbaai Extension 8 is currently not connected to any municipal reticulation system of water, sewer and electricity that are provided by the Henties Bay Municipality as it is used as a burial site for human remains, which do not require the above listed municipal services. The proposed Erf A, B, C and the Remainder are envisioned for purposes that do not require the usage of municipal reticulation services and as such, no services will be extended to the proposed erven.

3.4 Access Provision

Access to Erf 1924, Hentiesbaai Extension 8 is currently obtained from a 20m wide internal street network serving the neighbourhood of Hentiesbaai Extension 8. The proposed Erf A/1924, Hentiesbaai Extension 8 will retain its current access, whereas the proposed Erven B/1924 and C/1924, Hentiesbaai

Extension 8 will gain their access from the proposed Erf Re/1924 which is to be extended to the C34 Road which has now been de-proclaimed as a Main Road (thus, no access approval from the Roads Authority is required).

4 ENVIRONMENTAL BASELINE INFORMATION

The environmental and social setting of the proposed project area is briefly described in this section. The detailed description of these environmental features will be fully presented in the environmental scoping report.

4.1 Biophysical Environment

4.1.1 Climate

The Namibian coastal desert lies in a hyper arid climate which is marked by very low rainfall, ranging from 0 to 50 mm (Mendelsohn et al, 2009). The mean annual daily maximum temperature is 17°C along the coastal areas of the desert, whilst the minimum daily temperature averages between 13°C and 16°C (Mupambwa *et al.*, 2019). Annual rainfall ranges between 15mm at the coast and 80-100mm near the great escarpment (Mupambwa *et al.*, 2019).

4.1.2 Soil and Geology

Although the Omaruru River flows in a westward direction cutting mainly through metasedimentary and metamorphic rocks aging from the Neoproterozoic to Cretaceous, downstream the Omdel Dam, the riverbed lies on Quaternary Formation of surficial deposit such as Kalahari sands, scree, calcrete, gravel alluvium calcrete and gypcrete (GCS, 2021).

4.1.3 Landscape

In the Erongo Region the land rises steadily from sea level to about 1000 meters across the breadth of the Namib. Namibia's highest mountain, Brandberg (2,579 m), lies in the far northern part of the Erongo Region (Geological Survey of Namibia, 2012).

The proposed site is relatively flat and has a gentle slope in a north westerly direction. The subject is located on the higher lying gravel plain to the south of the defined river embankment and resultantly does not fall within a flood prone area.

4.1.4 Water Resources

Until the recent commissioning of a desalination plant by Areva for its Trekkopje Uranium Mine, the coastal towns of Henties Bay, Swakopmund and Walvis Bay (As well as many other consumers) were entirely dependent on groundwater. However, since Areva has put its mine under "care and maintenance", fresh water from the plant is forming part of the coastal water supply. The groundwater stored in the coastal aquifers of the Kuiseb, Swakopmund and Omaruru Rivers come from about 300 km inland at altitudes of about 2000 m. These ephemeral rivers rarely flow into the Atlantic Ocean, and only for short periods after substantial rain. In order to enhance the storage of water from flood, the Omdel Dam, situated about 35 km inland from the coast, was completed in 1994 on the Omaruru River (GCS, 2021).

4.1.5 Fauna and Flora

The subject area falls within the Namib Desert Biome (Mendelsohn, Javis, Roberts, & Robertson, 2002). All endemic plant species found within the area are considered to be drought tolerant, drought resistant or succulent. Short lived annuals, which occur after local rainfalls and floods, provide a vital source of food for game grazing within the Namib plains.

The central and southern areas of the site are sparsely vegetated (in terms of coastal desert environment) some vegetation can be found within the 50metre linear strip along the southern embankment of the Omaruru River where more sandy soil conditions are found. As such the proposed development has been set back by between 50m to 100m from the defined upper edge of the river embankment in an attempt to preserve the natural fauna and flora of the area

4.2 Social Environment

4.2.1 Social Demographics

According to Namibia Statistics Agency (2011), the population of Erongo Region is 150 809 people with the population of Henties Bay being 5 170 people.

4.2.2 Economy

Wages and salaries are the main source of income in this region, while other income sources include farming, business etc.

4.2.3 Land Use

The Erongo Region's whole eastern part and certain western parts are characterized by livestock farming on commercial farms in the districts of Karibib, Usakos and Omaruru, and in the communal areas at Okongwe, Otjohongoro, Otjongoro, Ozondati, Omatjette, Okombahe, Tubuis, Goabeb and Otjimbingwe (Erongo Regional Council, 2015). The main economic activities in the central and coastal area are light industry, farming, fishing, mining and tourism (Ministry of Agriculture Water and Rural Development, 2011).

ENVIRONMENTAL ASSESSMENT PROCESS

- Establishing environmental risks of the intended project
- Establishing mitigation protocol
- Preparing the draft Environmental Assessment Report (EAR) and Environmental Management Plan (EMP)
- Public reviewing of Draft EAR and EMP
- Preparing the final EAR & EMP and submitting to MEFT
- Awaiting decision from Authorities
- Communicating decision to Interested & Affected Parties
- Availing opportunities to Appeal.

5 POTENTIAL IMPACTS

The following potential impacts have been identified so far:

- **Temporary job creation** through the hiring of workers to be involved during the construction of roads and associated infrastructure.
- **Impact on vegetation and fauna:** some vegetation may need to be removed to during site clearance. This may also lead to habitat destruction for some fauna.
- **Traffic impacts:** traffic may increase once the plots become developed and occupied.
- **Environmental degradation** through different types of waste generated on the site.
- **Soils and water contamination** from construction materials being used during construction activities.
- **Noise and dust** generated during construction activities.
- **Health and safety risks** which may result to workers during construction activities.
- **Archaeological and Heritage Impacts** if these sites are located close to or within the planned area.

Additional impact will be identified as the assessment process progresses and after further public consultation.

6 PUBLIC CONSULTATION

The Environmental Impact Assessment process involves interaction with people who are interested in, or who could be affected by the proposed development and/or operational activities of the proposed Henties Bay development.

To further obtain inputs into the developments to take place. Communication will be sent out to various potential I&APs and Line Ministries in addition to the public notices to be placed in the newspapers, on the sites and around the subject area to obtain comments on the proposed developments.

7 ALL STAKEHOLDER/INTERESTED & AFFECTED PARTIES (I&AP)

Public participation process gives you the opportunity to:

- Obtain information about the proposed project
- Raise any environmental issues relating to the project

How can you be involved?

- By responding to the invitation advertised in the newspapers
- By registering as an I&AP, for your name to be added to our register list
- Submitting your comments or requests in writing.

We are inviting the public to participate by contributing issues and suggestions regarding the proposed projects on or before **29 June 2023**. For further information, or concerns, I&APs can complete the register below:

8 REGISTRATION AND COMMENTS

Participant Name:	Organization/Affiliations:
Position:	Telephone:
Fax:	E-Mail:

Postal Address:
Comments/Suggestions and Questions:

Please fill in particulars and return completed document to be registered as an Interested & Affected Parties (I&AP) to:

Stubenrauch Planning Consultants (SPC) Tel: 061 25 21 57 Fax: 061 25 11 89 E-Mail: bronwynn@spc.com.na
--