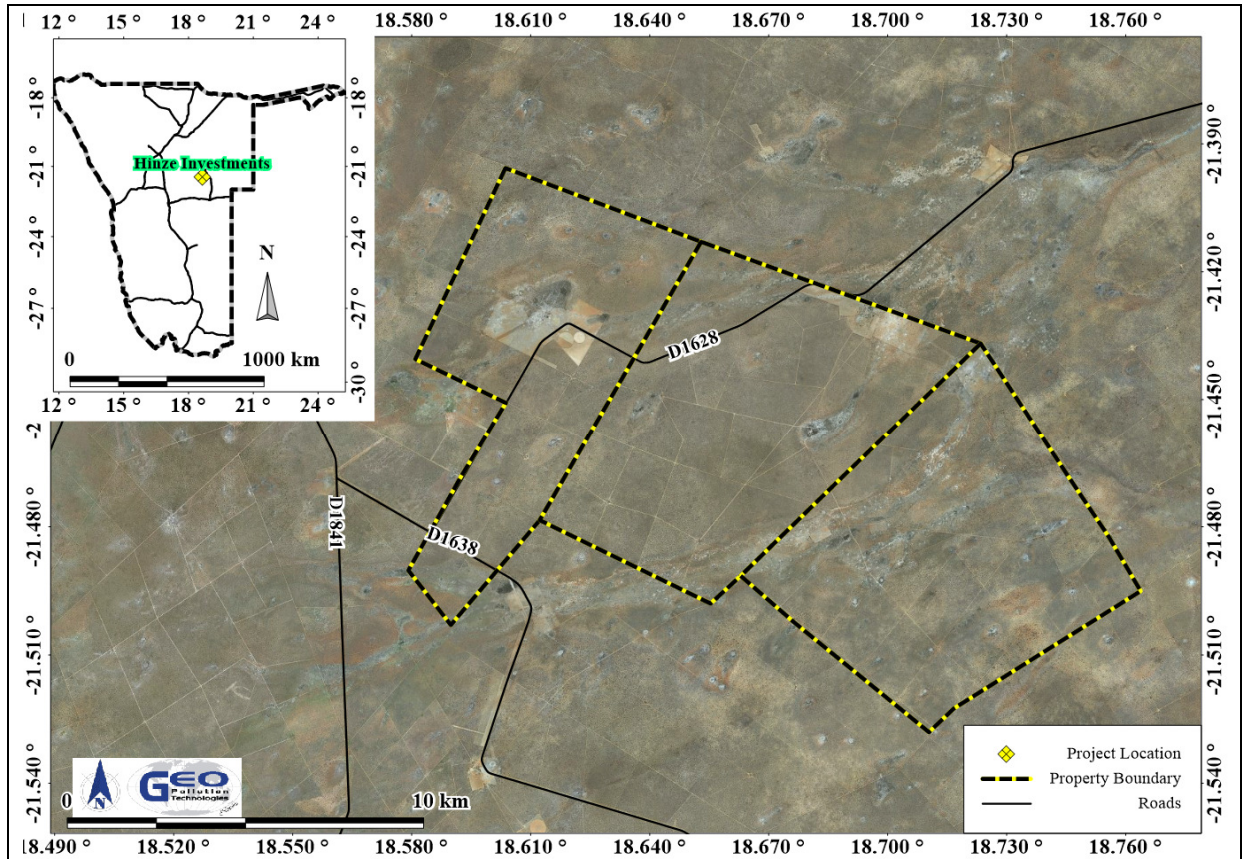


**ENVIRONMENTAL IMPACT SCOPING ASSESSMENT AND  
ENVIRONMENTAL MANAGEMENT PLAN FOR CROP  
CULTIVATION ACTIVITIES OF HINZE INVESTMENTS CC ON THE  
FARMS OKASONDANA NO. 264, EVARE NO. 265 AND OKATJUKURI  
NO. 263, OMAHEKE REGION**

**PROJECT LOCATION**



For any additional information regarding the project, or to register as an interested and / or affected party, kindly contact the project team as per the contact details below.

**Project Contact Details**

Project Team: Quzette Bosman, Jannie Van Der Merwe  
Phone: +264 (0)61 257 411  
Fax: +264 886 26 368  
Email: [gpt@thenamib.com](mailto:gpt@thenamib.com)