

PROJECT LOCATION

The envisaged aquaculture (fish farm) and an agricultural project will be establishment about 5 Kilometres west of Outapi when using the C46 road from Outapi to Ruacana and turn on the right at the turn-off to Okanimekwa combined school for about 900 meters on the gravel road, the proposed area will be located about 800 meters east of the gravel road and north of Mr. John Pendukeni homestead, at Ohamuyala village, within Outapi constituency in the Omusati Region. Outapi is one of the fast-growing towns, located in northern Namibia situated about 90 km north-west of Oshakati when using the C46 road. According to the 2011 housing and population census the town of Outapi has a population of over 6 437 residents and it is estimated that the population has escalated exponentially over the years. Please refer to the locality map in **Figure 1** below for the proposed site.

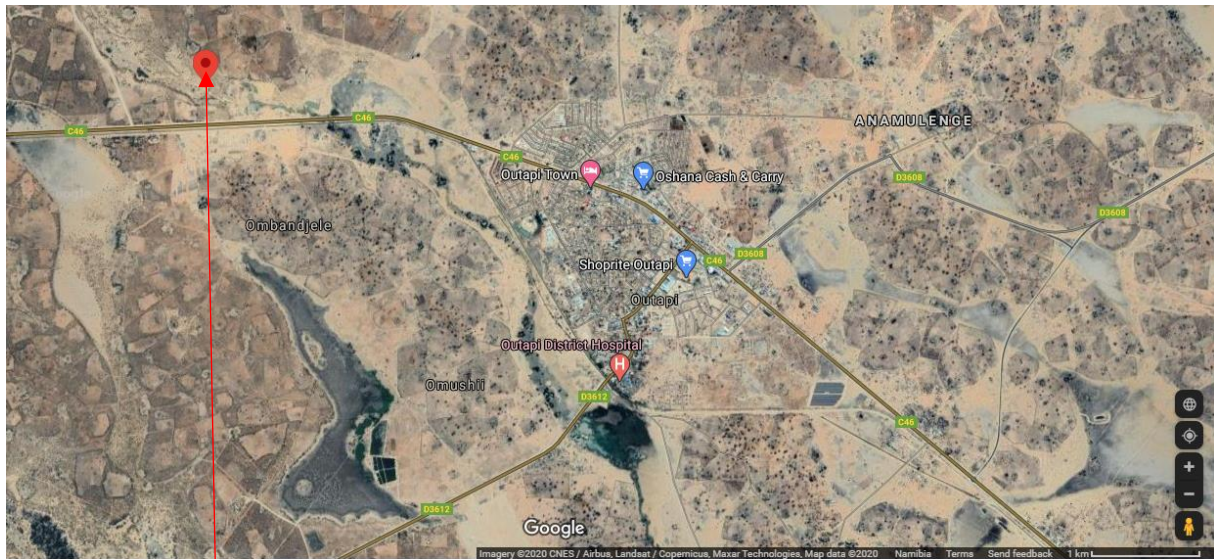


Figure 1: Location for the proposed establishment and operation of an aquaculture and an agriculture project at Ohamuyala village, within of Outapi constituency, Omusati region (Google, 2020). **(GPS Coordinates: -17.4916034 S, 14.9491104 E)**