

### 1.3. Project location

The proposed Omulondo Agricultural Project for PORAD Association will be established within a communal area in Onanke village, Omulondo District in Oshikoto region. The 200 ha piece of land was allocated to PORAD Association by the Ondonga Traditional Authority.

The proposed project land is currently not occupied. The land is located 34 km from Omuthiya Town. Below are the GPS coordinates and site layout of the allocated land for the proposed establishment of PORAD agricultural project:

TABLE 1.1 GPS COORDINATES PROPOSED LAND

Points	Latitude	Longitude
1	-18.48492	16.36763
2	-18.48946	16.36745
3	-18.49086	16.37426
4	-18.49298	16.38046
5	-18.49372	16.38398
6	-18.48938	16.38695
7	-18.48589	16.38885
8	-18.48065	16.37272

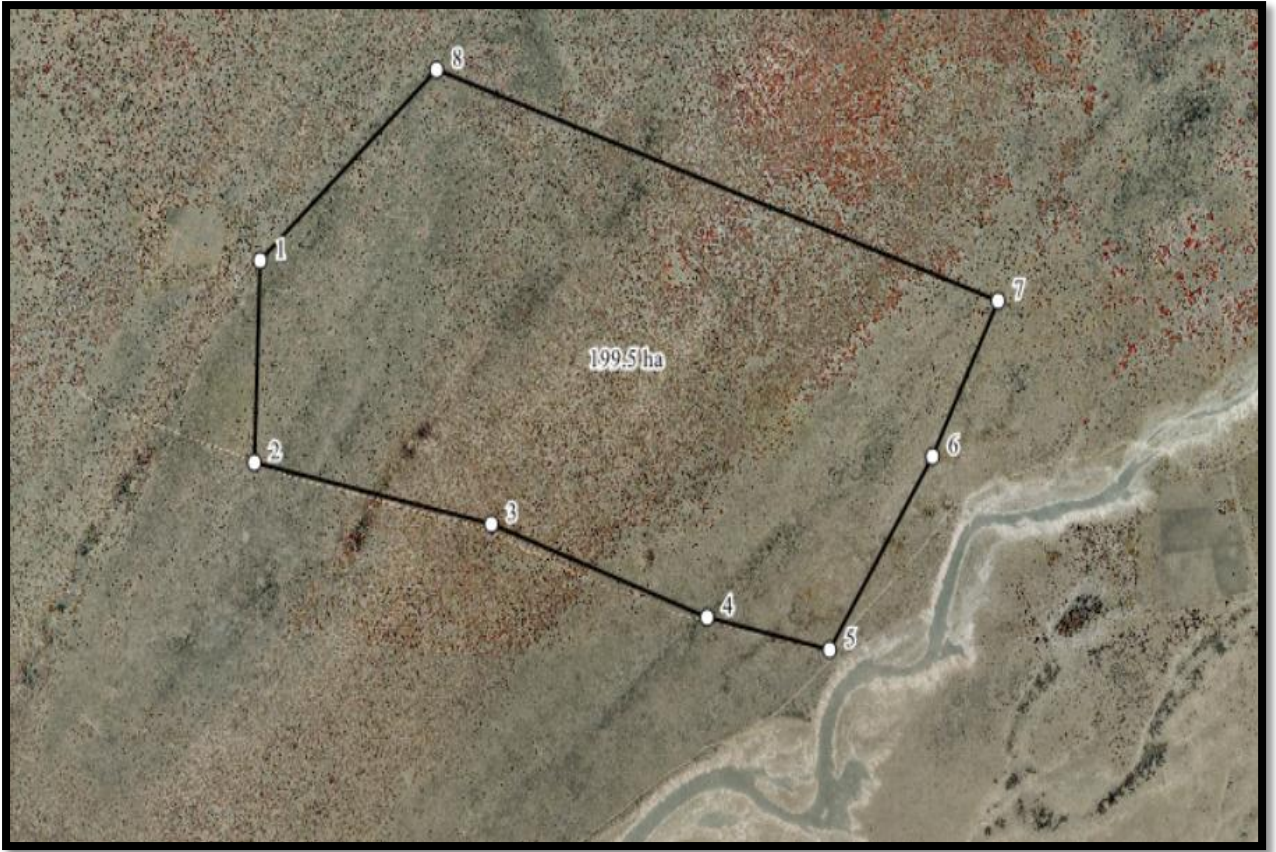


FIGURE 1: PROJECT LAND LAYOUT (GOOGLE EARTH)