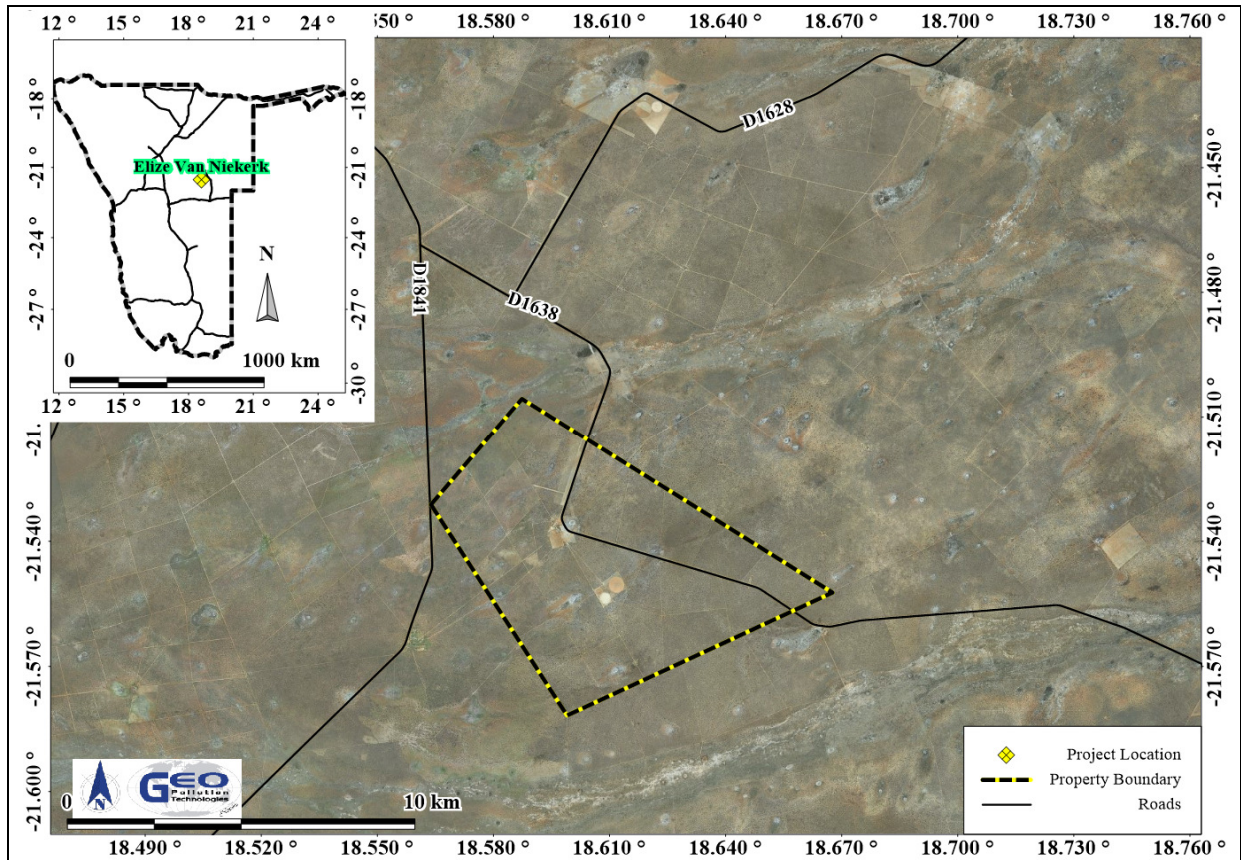


**ENVIRONMENTAL IMPACT SCOPING ASSESSMENT AND
ENVIRONMENTAL MANAGEMENT PLAN FOR CROP
CULTIVATION ACTIVITIES OF VISION FARMING ON THE FARM
SPRINGVALE NO. 337, OMAHEKE REGION**

PROJECT LOCATION



For any additional information regarding the project, or to register as an interested and / or affected party, kindly contact the project team as per the contact details below.

Project Contact Details

Project Team: Quzette Bosman, Jannie Van Der Merwe
Phone: +264 (0)61 257 411
Fax: +264 886 26 368
Email: gpt@thenamib.com