

The mineral licence is located 30 km Northwest of Otjiwarongo and covers farms Naribis, Randveld, Knoll, Kenilworth, Wembley and Jobos. The coordinates for the centre of the licence are 16°28'44,467"E and 20°14'58,588"S.

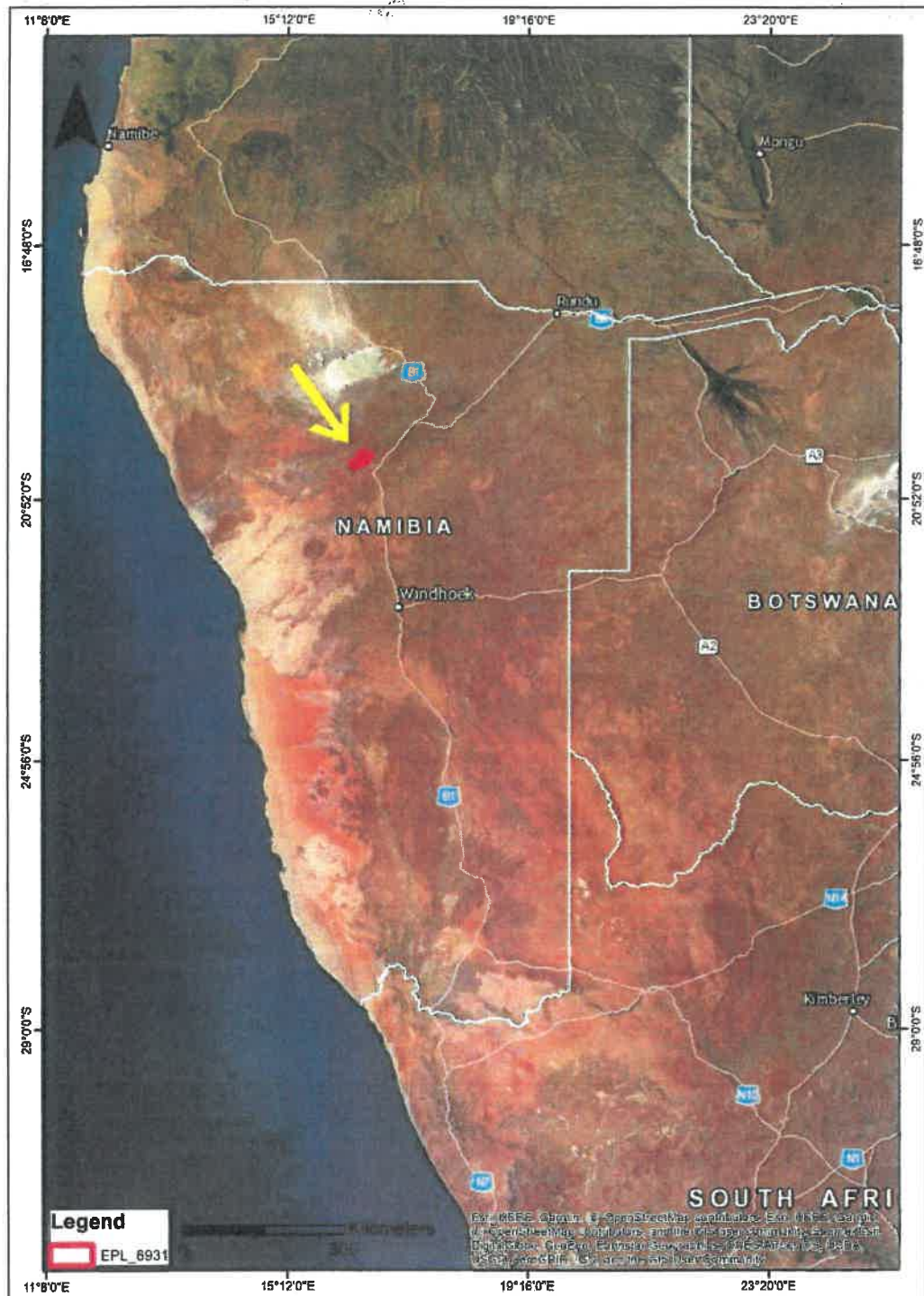


Figure 3 Locality map of the exclusive prospecting licence area

16°20'0"E

16°24'0"E

16°28'0"E

16°32'0"E

16°36'0"E

20°40'S

20°8'0"S

20°12'0"S

20°16'0"S

20°20'0"S

20°24'0"S

20°40'S

20°8'S

20°12'S

20°16'S

20°20'S

20°24'S



WOODHOLME WOODHOLMEFRESNAYE
 FRIEDENSTAL HOMESTEAD
 WEMBLEY
 JOBOS NO_NAME HOMESTEAD
 KENILWORTH
 SUMMERDOWN KNOLL
 ARCADIA RANDVELD
 NO_NAME
 NARIBIS
 BERGPLAAS
 RUSTHOF

Legend
 EPL_6931

0 1 2 3 4 5 6 7 8 9 10

© 2011 ESRI. All rights reserved. ESRI, the ESRI logo, and ArcView are either registered trademarks or trademarks of ESRI in the United States and/or other countries. Source: Esri, DigitalGlobe, GeoEye, Earthstar Geographics, CNES/Airbus DS, USDA, USGS, AeroGRID, IGN, and the GIS User Community

16°20'0"E

16°24'0"E

16°28'0"E

16°32'0"E

16°36'0"E

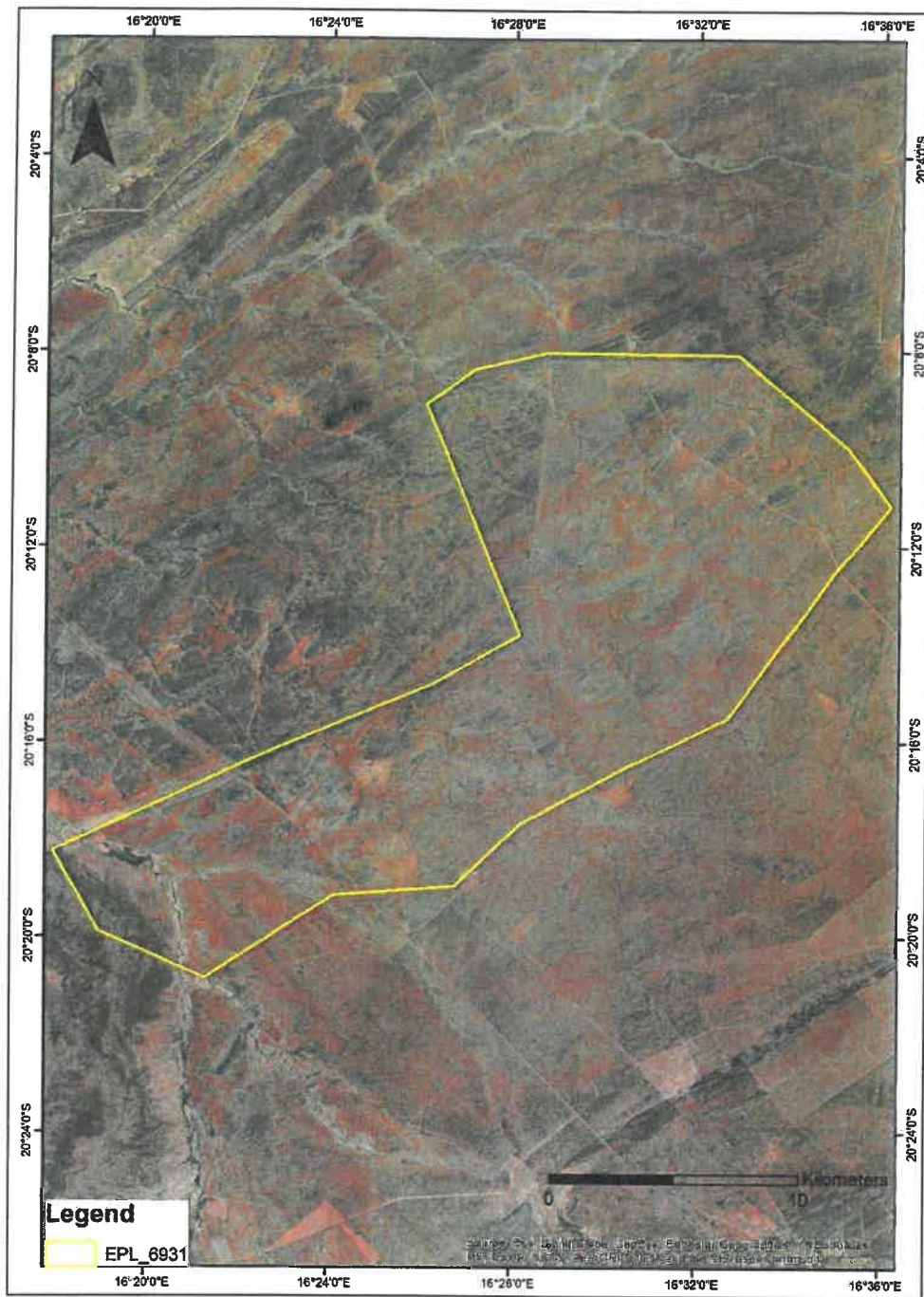


Figure 1 A satellite imagery showing the orientation of the mineral exploration licence.