

Environmental Impact Assessment for Prospecting and Exploration Activities on EPL 8829

//Kharas Region



Prepared:

By:



FIN Hydro Environmental Technologies

June 2023

For:



JCN Oil & Energy

TABLE OF CONTENTS

TABLE OF CONTENTS	1
1 PURPOSE OF THIS DOCUMENT	2
2 BACKGROUND INFORMATION	2
3 LOCALITY	4
4 GEOLOGY:	5
5 PERSONNEL:	5
6 INFRASTRUCTURE:	5
7 ENVIRONMENTAL ASSESSMENT PROCESS:.....	5
8 PUBLIC MEETING:	6
9 ALL STAKEHOLDER/INTERESTED & AFFECTED PARTIES (I&AP)	6
10 REGISTRATION AND COMMENTS.....	7

1|PURPOSE OF THIS DOCUMENT

The purpose of this Background Information Document (BID) is to brief Interested & Affected Parties (I&AP's) and Stakeholders about the Environmental Impact Assessment for Prospecting and Exploration Activities on EPL 8829, //Kharas Region. The BID also provides an opportunity for I&APs to register for the EIA process and to submit any initial comments or issues regarding the proposed project.

2|BACKGROUND INFORMATION

The proponent, **JCN Oil and Energy**, has obtained a Notice to Grant Exclusive Prospecting Licence over EPL 8829. The minerals of interest are Base and Rare Metals, Industrial Minerals, and Precious Metals. Exploration is a range of activities to help determine if there are minerals under the ground. The objective of the planned prospecting and exploration activities is to identify geological features and lithostratigraphic units within the concession area, and to define the mineral deposits, in order to determine whether these deposits are economically viable. If the exploration process identifies minerals that can be commercially extracted, then mining in the future is possible.

The activities will include both invasive and non-invasive exploration. The proponent will employ a phased exploration approach consisting of three distinct phases i.e. the Pre-Development Phase, Operational and Maintenance Phase, and the Decommissioning and Rehabilitation Phase.

The pre-development phase involves literature and map reviews, as well as fieldwork to determine targets for detailed investigation. The operational and maintenance phase is the phase during which the exploration program will commence. The target areas within the EPLs' boundaries identified during the pre-development phase will undergo rigorous examination. Soil sampling and Reverse Circulation Drilling is the preferred technique for the planned exploration work, and diamond drilling may be considered depending on the outcome of initial operations. A pit may be dug for bulk sampling and the size of the samples may be adjusted depending on the nature of mineralization observed. No explosives will be used during the exploration phase.

In terms of the Environmental Management Act (No. 7 of 2007) and Environmental Impact Assessment Regulations (Government Notice No. 30 of 2012), the following listed activities in **Table 1** were triggered by the proposed project:

Table 1: List of triggered activities

Activity Name and No(s):	Description of relevant Activity
Activity 3.1 (Mining and Quarrying Activities)	The construction of facilities for any process or activities which requires a licence, right or other form of authorisation, and the renewal of a licence, right or other form of authorisation, in terms of the Minerals (Prospecting and Mining Act), 1992.
Activity 3.2 (Mining and Quarrying Activities)	Other forms of mining or extraction of any natural resources whether regulated by law or not.
Activity 3.3 (Mining and Quarrying Activities)	Resource extraction, manipulation, conservation and related activities.

The proponent) commissioned this EIA and appointed **FIN Hydro Environmental Technologies** to undertake the necessary activities to enable an application for an Environmental Clearance Certificate with the Environmental Commissioner as prescribed by the Environmental Management Act (No. 7 of 2007) and Environmental Impact Assessment Regulations (Government Notice No. 30 of 2012). In line with Regulation 21(2) of the mentioned EIA Regulations, this BID is distributed to potential I&APs as part of the public consultation process for the EIA.

Environmental Assessments are used by planning and decision making authorities to obtain an objective view of the potential environmental and socio-economic impacts associated with the planning, construction and operation of the proposed development activities. This information must provide the relevant authorities with a sound basis for decision-making. The deliverables of this Environmental Assessment process are an Environmental Scoping Report and an Environmental Management Plan which will, amongst other things:

- Identify the potential impacts of the proposed activities;
- Outline the public participation process undertaken, illustrate the issues, concerns and suggestions raised by Interested and Affected Parties;
- Outline the environmental management and mitigation measures that must be taken to avoid or reduce negative impacts and enhance positive impacts.

The above documents together with the application for an Environmental Clearance Certificate will be submitted to the Ministry of Mines and Energy as the Competent Authority who will in turn forward this to the Ministry of Environment, Forestry and Tourism for approval.

3|LOCALITY

The EPL 8829 is located in the southernmost portion of Karas Region, on Farm Haakiesdoorn 137, approximately 70 km south-west of Warmbad, //Kharas Region. The EPL is accessible off the D208 road coming from the direction of Karasburg, which passes adjacent the EPL to the east. See **Figure 1** below for the locality map of the EPL.

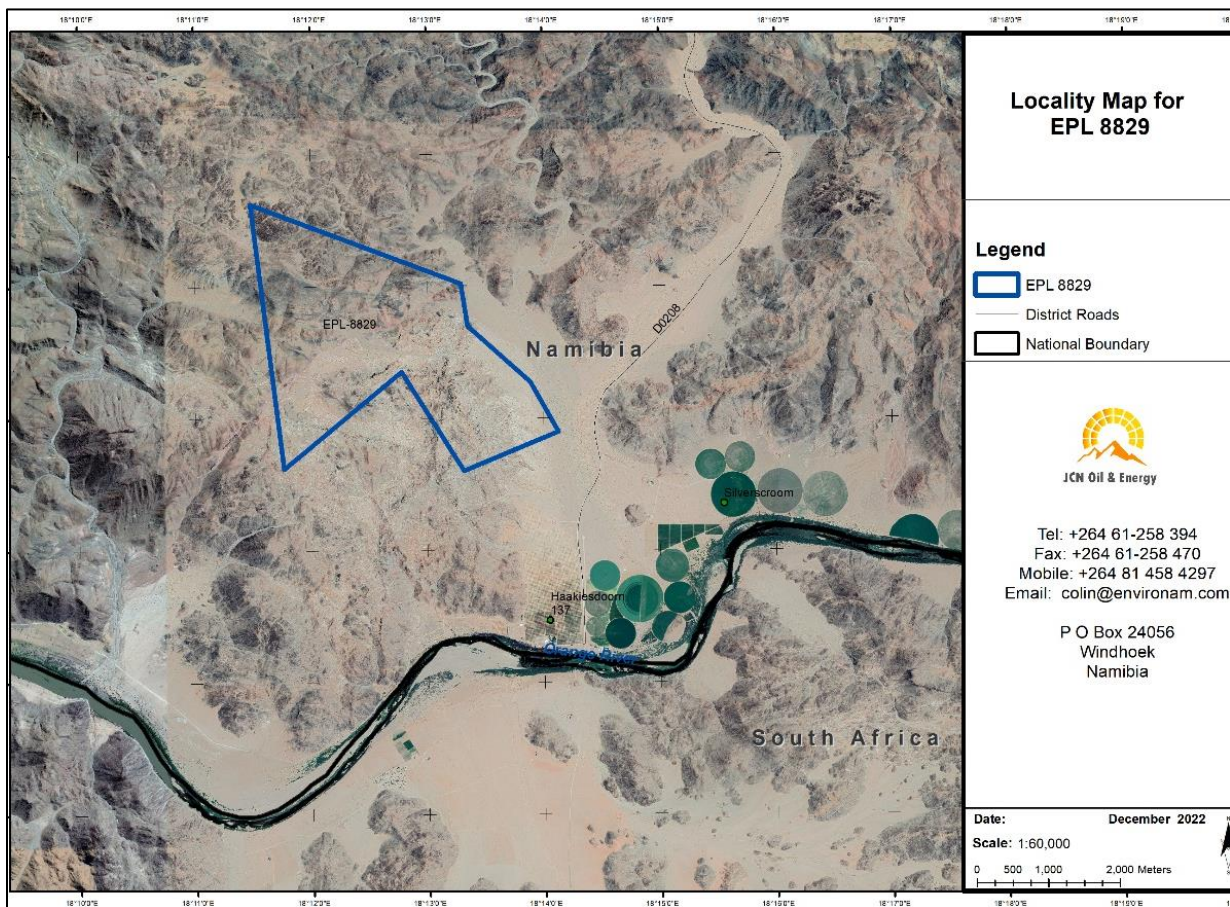


Figure 1: Locality map of EPL 8829

4|GEOLOGY:

The geology of the area is characterized by the presence of both Palaeo-proterozoic metasedimentary rocks, metavolcanic and granitic intrusive of the Orange River Group and Vioolsdrif Granite Suite. The area is well known for the massive Pegmatite-related mineralizations that have call the interest of mineral exploration companies.

The area is located to the west of the Tantalite Valley shear zone associated to Namaqua-Natal deformations, which could have been reactivated during Gariep Belt tectonic event. Tectonic structures could have also served as important conduits for mineralizations to be formed.

5|PERSONNEL:

It is envisaged that approximately 10 people will be employed during the exploration stage.

6|INFRASTRUCTURE:

Water for the exploration activities may be obtained from one or more boreholes on Farm Haakiesdoorn 137 in consultation with the farm owner or any other approved water sources. Any new groundwater sources will be subject to obtaining a water abstraction permit from the relevant authorities. Power supply during the exploration stage may also be obtained from the farm owner at agreed tariffs, alternative sources such diesel-generators may also be considered.

The access road will be obtained from the D208, and exiting tracks on the property. New tracks to be formed will be identified and agreed to with the farm owner.

7|ENVIRONMENTAL ASSESSMENT PROCESS:

- Establishing environmental risks of the intended project
- Establishing mitigation protocol
- Preparing the draft Environmental Scoping Report (DESR) and Environmental Management Plan (EMP)
- Public reviewing of DESR and EMP
- Preparing the final ESR & EMP and submitting to MME and MET
- Awaiting decision from Authorities
- Communicating decision to Interested & Affected Parties
- Availing opportunities to Appeal.

8|PUBLIC MEETING:

The Environmental Impact Assessment process involves interaction with people who are interested in, or who could be affected by the proposed development and/or its construction and operational activities. Communication will also be sent out to various potential I&APs and Line Ministries to obtain comments on the proposed developments.

9|ALL STAKEHOLDER/INTERESTED & AFFECTED PARTIES (I&AP)

Public participation process gives you the opportunity to:

- Obtain information about the proposed project
- Raise any environmental issues relating to the project

How can you be involved?

- By responding to the invitation advertised in the newspapers (Windhoek Observer and Confidante)
- By registering as an I&AP, for your name to be added to our register list
- Submitting your comments or requests in writing

We are inviting the public to participate by contributing issues and suggestions regarding the proposed project on or before **09 June 2023**. For further information, or concerns, I&APs can complete the register below:

10|REGISTRATION AND COMMENTS

Participant Name:	Organization/Affiliations:
Position:	Telephone:
Fax:	E-Mail:
Postal Address:	
Comments/Suggestions and Questions:	

Please complete the form and return document to be registered as an Interested & Affected Party (I&AP) to:

FIN Hydro Environmental Technologies

Tel: +264 81 247 3646

Fax: +264 61 - 258 470

E-Mail: fin.environtech@gmail.com