

<p>Project Name:</p>	<p>BACKGROUND INFORMATION DOCUMENT FOR THE REZONING OF LOT (PORTION) A/8, B/8, 10, 11 AND 12 OF FARM OSONA COMMONAGE NO. 65, OKAHANDJA FROM 'AGRICULTURE' TO 'LIGHT INDUSTRY'</p>
<p>The Proponent:</p>	<div data-bbox="823 629 1185 719" data-label="Image"> </div> <p>Interpack Beverages P O Box 90654 KLEIN WINDHOEK</p>
<p>Prepared by:</p>	<div data-bbox="560 987 1445 1223" data-label="Image"> </div> <div data-bbox="560 1223 1445 1323" data-label="Text"> <p>1st floor Bridgeview Offices & Apartments, No. 4 Dr Kwame Nkrumah Avenue, Klein Windhoek, Namibia PO Box 6871, Ausspannplatz, Windhoek</p> </div>
<p>Release Date:</p>	<p>July 2023</p>
<p>Consultant:</p>	<p>C. Du Toit C. Van Der Walt Cell: 081 127 3145 Email: charlie@greenearthnamibia.com</p>

Table of Contents

1.	Introduction	3
2.	Background Information on Project	3
2.1	Site details	3
3.	Supporting Bulk Services and Infrastructure Provision.....	7
3.1.	Access.....	7
3.2.	Water supply / requirements.....	7
3.3.	Electricity	8
3.4.	Sewage disposal	8
3.5.	Storm water and drainage	8
3.6.	Solid waste	8
3.7.	Fire protection	8
4.	Listed activities triggered by the proposed project	8
5.	Approach to the Environmental Assessment of the Project.....	9
5.1.	Aims of the Assessment Process	9
5.2.	Methodology.....	9
6.	Expected Impacts on receiving environment	10
7.	Public Involvement Program	10

List of Figures

<i>Figure 1: Location of the site</i>	4
<i>Figure 2: Location of the site</i>	5
<i>Figure 3: Photo of the site</i>	6
<i>Figure 4: Access Road to Project Site</i>	7

THE FOLLOWING IS A BACKGROUND INFORMATION DOCUMENT FOR THE ENVIRONMENTAL IMPACT ASSESSMENT AND ENVIRONMENTAL MANAGEMENT PLAN TO OBTAIN AN ENVIRONMENTAL CLEARANCE FOR THE REZONING OF LOT (PORTION) A/8, B/8, 10, 11 AND 12 OF FARM OSONA COMMONAGE NO. 65, OKAHANDJA FROM 'AGRICULTURE' TO 'LIGHT INDUSTRY'

1. Introduction

Green Earth Environmental Consultants have been appointed by the Interpack Beverages to attend to and complete an Environmental Impact Assessment (EIA) and Environmental Management Plan (EMP) in order to obtain an Environmental Clearance Certificate for the rezoning of Lot (Portion) A/8, B/8, 10, 11, and 12 of Farm Osona Commonage No. 65, Okahandja from 'Agriculture' to 'Light Industry' as per the requirements of the Environmental Management Act (No. 7 of 2007) and the Environmental Impact Assessment Regulations (GN 30 in GG 4878 of 6 February 2012).

The Background Information Document (BID) serves to convey information regarding the proposed project to Interested and Affected Parties (I&APs) to allow them the opportunity to comment on the proposed project.

This document contains the following information:

- A brief background on the proposed project.
- The approach to the environmental assessment process.
- Environmental and planning issues identified.
- How to become involved.

2. Background Information on Project

2.1 Site details

Lots (Portions) A/8, B/8, 10, 11, and 12 of Farm Osona Commonage No. 65, Okahandja is located about 2 km to the south of the Town of Okahandja west of the Windhoek Okahandja Trunk Road, directly west of the Hodygos Camping Site and Youth Campus. The locality of the site is shown on the plans below:

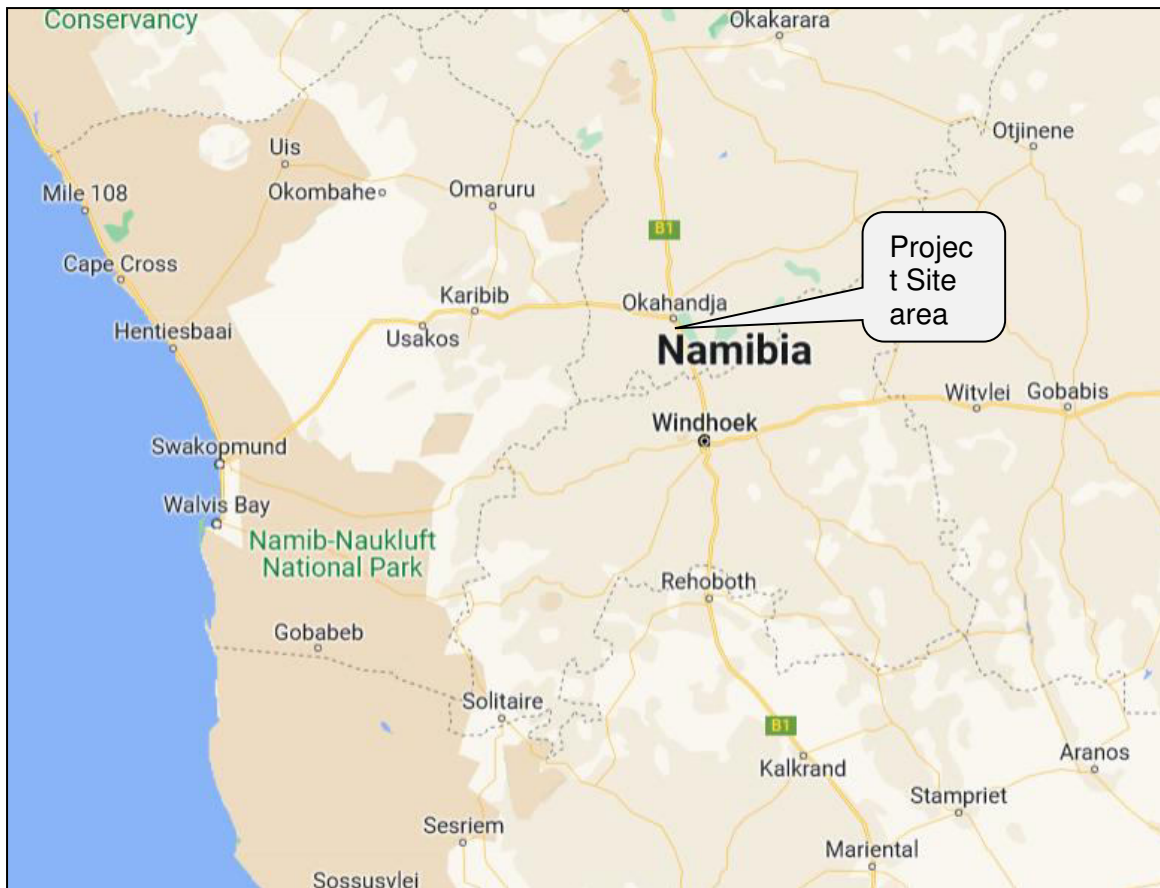


Figure 1: Location of the site

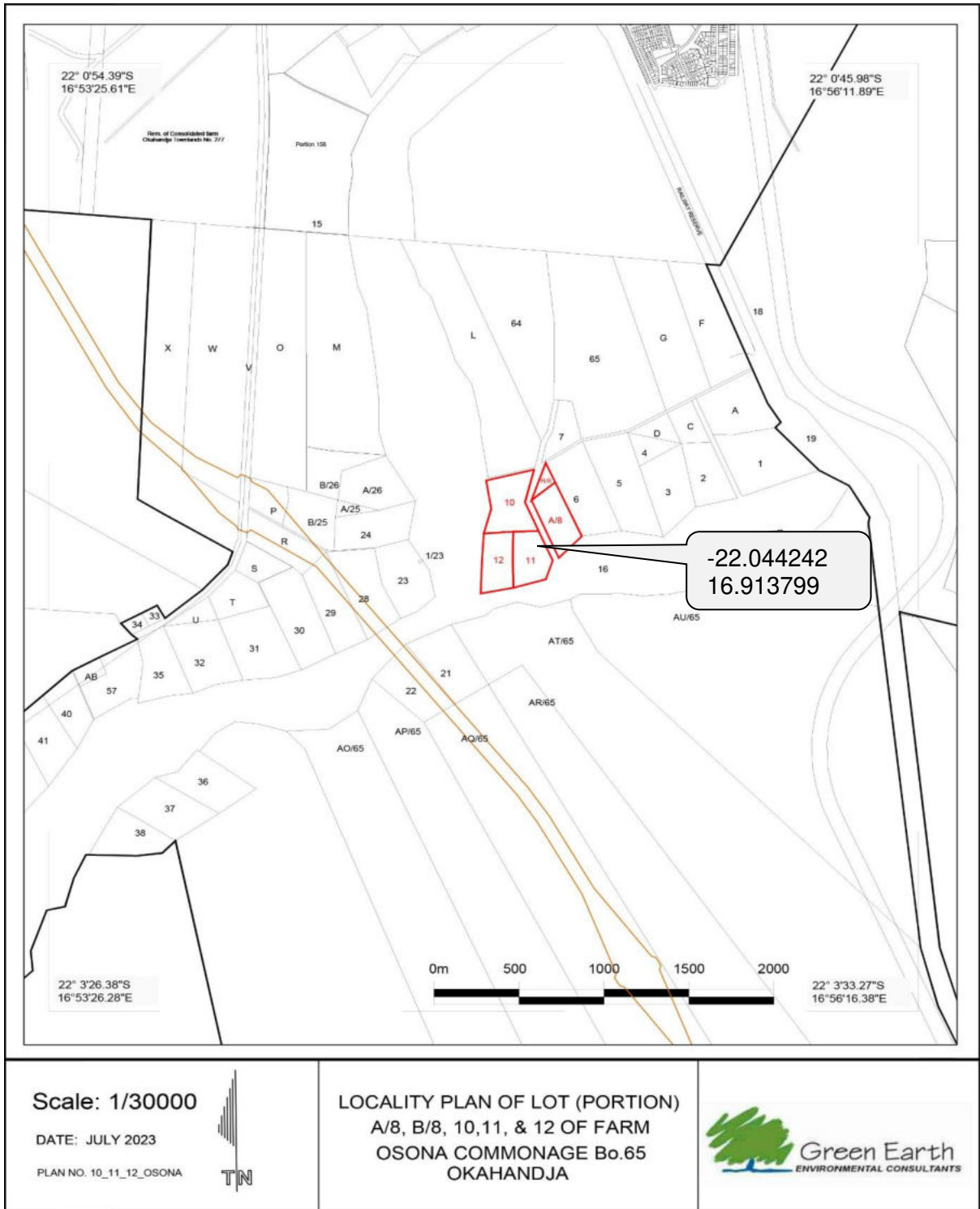


Figure 2: Location of the site

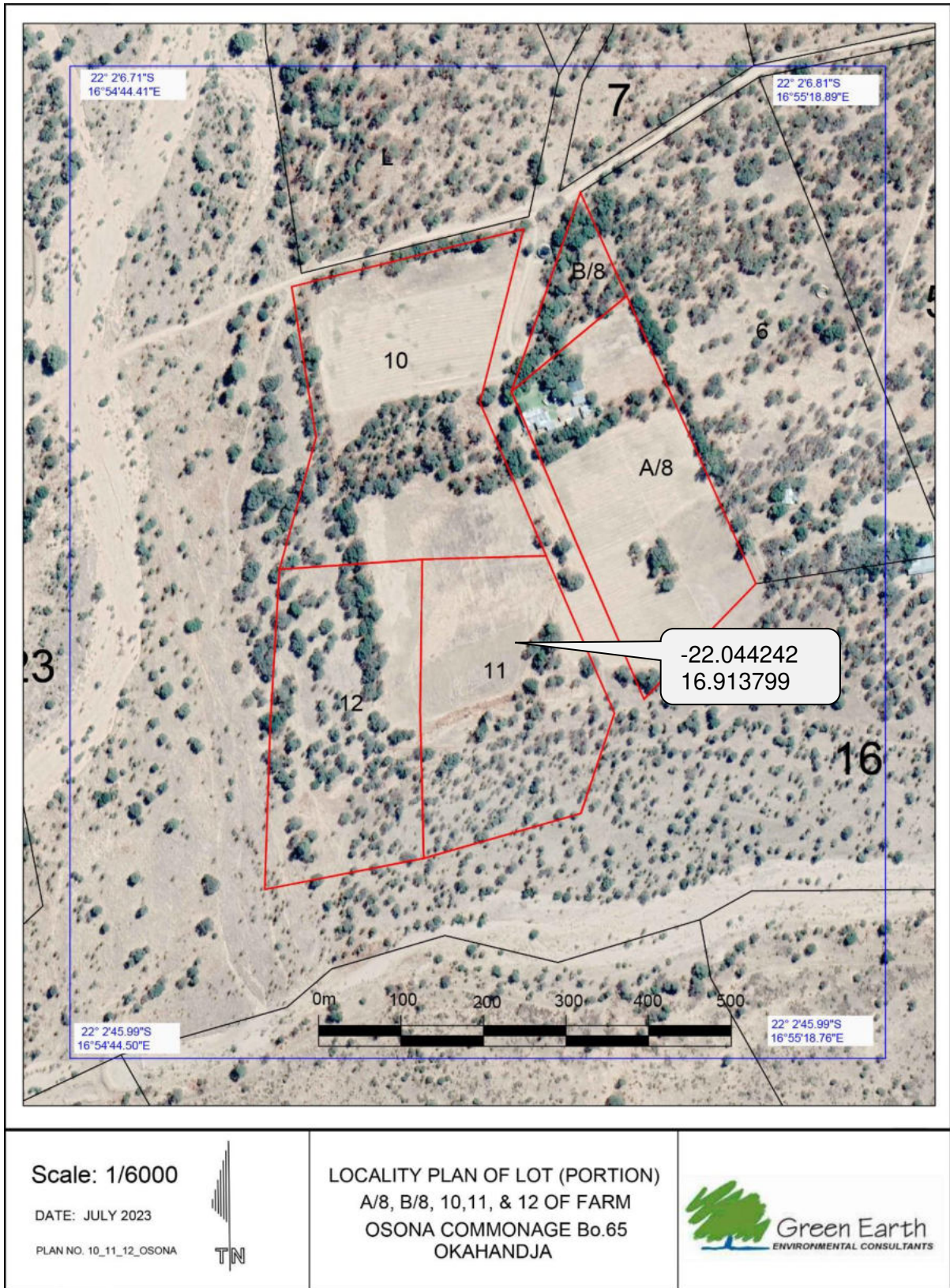


Figure 3: Photo of the site

3. Supporting Bulk Services and Infrastructure Provision

Although the Portions are located within the Town Planning Scheme Boundary of Okahandja, the area is not yet fully serviced by municipal bulk services. Currently it has an electrical connection from NamPower and a water connection. The proposed facility will require the following services:

3.1. Access

The site, Lot (Portion) A/8, B/8, 10, 11, and 12 of Farm Osona Commonage No. 65, Okahandja take access from an existing road which link the site with Trunk Road B1. This is a gravel road which is maintained by the Municipality. The access road to the project site is shown on the *Map* below:



Figure 4: Access Road to Project Site

3.2. Water supply / requirements

The site has a connection with the Okahandja Municipal water network. It has also good sustainable groundwater from boreholes on the site which can be used to supplement the water obtained from Council. The previous owner had a permit to extract water for irrigation purposes. Interpack will apply for a new permit from the Department of Water Affairs once the rezoning and the ECC is approved.

3.3. Electricity

Electricity will be obtained from NamPower and it is the intention to supplement this electricity with roof mounted solar panels.

3.4. Sewage disposal

Only household sewer will be generated on site from the toilet facilities for the staff and clients. This sewer will be connected to French drains to be designed and constructed in accordance with the Okahandja Municipal regulations.

3.5. Storm water and drainage

The natural flow of storm water and drainage must be minimally disturbed, and the natural flow accommodated where possible. Provision must be made for the accommodation of surface water/stormwater management as it may endanger infrastructure.

3.6. Solid waste

The solid waste generated on the site will be separated into recyclable waste and collected by professional waste recyclers for reworking into useable products. The non-recyclable waste will be transported to the Okahandja landfill site.

3.7. Fire protection

The Proponent will put in the necessary fire protection infrastructure / extinguishers as per requirements. It is advised that a specialist Fire Protection Specialist is contracted to introduce a proper fire protection plan with the required infrastructure and to oversee the annual auditing and maintenance of the infrastructure.

4. Listed activities triggered by the proposed project

In terms of the Environmental Management Act (No. 7 of 2007) and the Environmental Impact Assessment Regulations (GN 30 in GG 4878 of 6 February 2012) an environmental impact assessment (EIA) report and management plan is required as the following listed activities are involved:

LAND USE AND DEVELOPMENT ACTIVITIES

5.1 The rezoning of land from agricultural use to industrial use.

WATER RESOURCE DEVELOPMENTS

8.1 The abstraction of ground or surface water for industrial or commercial purposes.

8.2 The abstraction of groundwater at a volume exceeding the threshold authorised in terms.

The proposed project is thus subject to obtaining an Environmental Clearance.

5. Approach to the Environmental Assessment of the Project

The purpose of the Environmental Impact Assessment is to consider social, ecological, legal and institutional issues related to the intended use of the land, guided by the principles and stipulations of the Namibian Environmental Assessment Policy (1995) and Namibia's Environmental Management Act (2007), to determine the desirability of the proposed activities on the suggested area and to develop an Environmental Management Plan (EMP) to mitigate and manage environmental issues identified in the process.

To accomplish the above, the impact study will be undertaken and based on the outcome of the findings; further specialists' investigation might be required to fully assess all impacts.

5.1. Aims of the Assessment Process

- To ascertain existing environmental conditions on the site to determine its environmental sensitivity.
- To inform I&APs and relevant authorities of the details of the proposed activities and to provide them with an opportunity to raise issues and concerns.
- To assess the significance of issues and concerns raised.
- To compile an impact report detailing all identified issues and possible impacts, stipulating the way forward and identify specialist investigations required.
- To outline management guidelines in an Environmental Management Plan (EMP) to minimize and/or mitigate potentially negative impacts.
- To comply with Namibia's Environmental Management Act (2007) and its regulations (2012).

5.2. Methodology

a) Desktop sensitivity assessment

Literature available on the area will be reviewed to determine potential environmental issues and concerns.

b) Site assessment (site visit)

This involves investigating the environmental parameters on site in order to enable further understanding of the potential impacts on site.

c) Involvement of Interested and Affected Parties

Stakeholders will be given the opportunity to comment on the proposed activities and engage in the planning process. The findings of the assessment process will be incorporated in the environmental impact assessment report.

6. Expected Impacts on receiving environment

From previous experience with developments of this nature and comments received from Affected Parties, the following key impacts on the receiving environment can be expected:

6.1. Socio-economic environment

- Community health issues - transmission of diseases from the construction team and support staff to the local community.
- Increase in criminal activities during construction.
- Cultural/heritage impacts.
- Employment will be created during construction and operation.

6.2. Bio-physical environment

- Effect on natural and general ambiance of the area and surroundings.
- The clearing of some vegetation for the construction of structures.
- Animals and birds habituating on the site will be disturbed.
- The use of water during construction and operations.
- The generation of dust during construction and operations.
- Material wastage (packing, building waste) polluting the site and neighbouring environment.
- Health and safety of construction and operational staff if not attended to satisfactorily.
- Impact on surface and groundwater.
- Noise during construction of bulk services as well as from the operations once constructed and in operation.
- Surface drainage systems (flow of surface draining systems).

These impacts and others which will be identified during the environmental scoping procedures and the engagement of the interested and affected parties will be evaluated to determine the significance of impact and if and how these impacts can be mitigated.

The above-named aspects will be covered in the Environmental Management Plan to be mitigated.

7. Public Involvement Program

During the public consultation process, Green Earth Environmental Consultants do the following:

- Identify and inform key stakeholders, authorities, the local authority (municipality), and interested or affected members of the public (I&APs).
- Give notice of the proposed activity as per the requirement of the Regulations through national newspapers, site notices and letters.
- Provide I&APs with additional information on the proposed activity by sending them this Background Information Document (BID).

- Schedule a public meeting if there is enough public interest to which all registered and identified I&APs will be invited, facilitate stakeholder participation and engagement and provide details of issues raised during the public involvement program and scoping exercise.
- Record all comments of I&APs, supported by responses provided by Green Earth, in a report to be included in the EIA.
- Inform the Proponent of comments relevant to the project's planning, implementation and operations and for inclusion in the EMP and consideration.

As an important part of the Environmental Impact Assessment process, you as stakeholder or interested member of the public are invited to find out more about what is being proposed, the implications thereof on the environment and/or to raise any issues or concerns.

Should you have any questions regarding the project, please contact **GREEN EARTH Environmental Consultants** at the contact details (*Charlie du Toit: 081 127 3145 or carien@greenearthnamibia.com*) provided on *Page 1* of this document. **The closing date for any questions, comments, inputs or information is 4 August 2023.**

