

1. Introduction

1.1 Project Location

Chobe Princess two (2) is the one of the smallest capacity of the houseboats under Zambezi Houseboats. Having begun its operations in 2006, offering tourists accommodation and leisure activities on its cruise in the Chobe River. The houseboat embarks on a three day cruise of the Chobe River to its furthest point of mooring at Serondela. Two nights are spent at Serondela before embarking on a return trip to Impalila mooring harbour for re-stocking where another night is spent. The map below provides a view of the mooring points of Chobe Princess 2 houseboat.

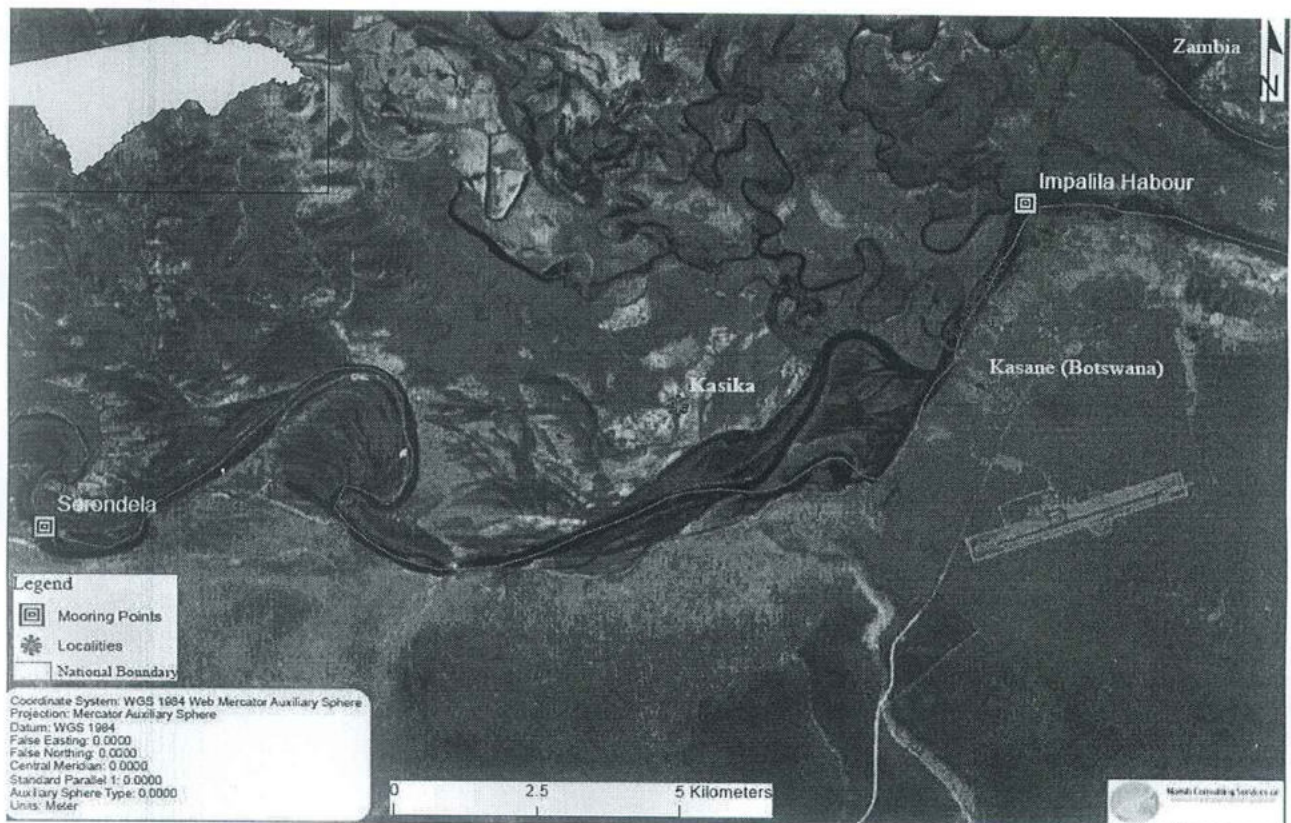


Figure 1 Mooring points of Chobe Princess 2

1.2 Project Motivation

The Environmental Management Act (No. 7 of 2007) and its regulations requires an environmental clearance be obtained prior to undertaking all listed activities. Subsequent to